

# **ATTACHMENT 25**

**Memphis, TN/AR/MS  
MSA**

# EXHIBIT A

## Competitive Overview Matrix

Memphis, TN-AR-MS MSA Competitive Overview  
BellSouth Pricing Flexibility Petition for Switched Services

PUBLIC VERSION

W/C Name	WC CLLI	WC ZIP address	Res Locations	Sm & Med Bus Locations	Complex Locations	Total Locations	Competitors w/switch (S) or collo (C) serving BS WC	UNE Counts through 5/04	Ported Number Counts as of 5/04/04	Tgt Segment	% of all Locations w/ WC	% of Locations Trgid by CLECs
Totals	18					332,694					78.0%	78.0%
ARLINGTON - BUILDING LOCATION	ARTNTNMT	38002				4,587						
COVINGTON - COVINGTON MAIN #2	CVTNTNMT	38019				10,475						
GERMANTOWN (SHELBY) - SOUTHWIND OF	GTWSTNSW					1,743						
HERRANDO - HERRANDO MAIN C/O	HRNNSDS	38632				10,095						
MEMPHIS - MEMPHIS BARTLETT	MMPHTNBA	38128				62,477				A	18.8%	18.8%
MEMPHIS - MEMPHIS CHEROKEE	MMPHTNCK	38111				9,860						
MEMPHIS - MEMPHIS CHICKASAW #2	MMPHTNCT	38111				27,367				A	8.2%	8.2%
MEMPHIS - MEMPHIS EASTLAND	MMPHTNEL	38117				35,133				A	10.6%	10.6%
MEMPHIS - MEMPHIS FRAYSER	MMPHTNFR	38127				16,014						
MEMPHIS - HUMPHREYS RMT SW BLDG	MMPHTNHP	38119				860						
MEMPHIS - MEMPHIS MAIN	MMPHTNMA	38103				18,157				A	5.5%	5.5%
MEMPHIS - MEMPHIS MIDTOWN	MMPHTNMT	38104				21,584				A	6.5%	6.5%
MEMPHIS - MEMPHIS OAKVILLE	MMPHTNOA	38118				42,692				A	12.8%	12.8%

Tgt Segment:  
B=Small, Med, Complex Bus.  
S=Small, Med. Bus.  
C=Complex Bus.  
R=Res.  
A=All segments  
5/4/04

Memphis, TN-AR-MS MSA Competitive Overview  
BellSouth Pricing Flexibility Petition for Switched Services

PUBLIC VERSION

W/C Name	WC CLLI	WC ZIP address	Res Locations	Sm & Med Bus Locations	Complex Locations	Total Locations	Competitors w/switch (S) or collo (C) serving BS WC	UNE Counts through 5/04	Ported Number Counts as of 5/04/04	Tgt Segment	% of all Locations w/ WC	% of Locations Trgid by CLECs
MEMPHIS - MEMPHIS SOUTHLAND	MMPHTNSL	38116				36,934				A	11.1%	11.1%
MEMPHIS - SOUTHSIDE BLDG	MMPHTNST	38106				15,094				A	4.5%	4.5%
MEMPHIS - MEMPHIS WESTWOOD	MMPHTNWW	38119				13,992						
SOUTHAVEN - DESOTO C. O. AT SOUTHA V E	SOHNMSDC	38671				5,623						

Tgt Segment:  
B=Small, Med, Complex Bus.  
S=Small, Med. Bus.  
C=Complex Bus.  
R=Res.  
A=All segments  
5/4/04

# EXHIBIT B

## Competitive Switch Information

**CLEC Switch POIs / Nodes With NPA/NXXs Assigned to BellSouth Rate Centers  
Shown By MSA**

<b>MSA</b>	<b>Switch CLLI</b>	<b>Switch EQP TYPE</b>	<b>Switch State</b>	<b>Switch Node</b>	<b>Sw Node EQP TYPE</b>	<b>Sw Node State</b>	<b>Switch Node CLEC Name</b>
Memphis, TN-AR-MS Metropolitan Statistical Area	JCSNMSPSDS1	4E	MS	MMPHTNMAXTX	POI	TN	AT&T LOCAL
	JCSNMSPSDS4	DS	MS	MMPHTNMAX6Z	POI	TN	AT&T LOCAL
	MMPHTN3ZDS0	NT5	TN	MMPHTN3ZDS0	NT5	TN	MCIMETRO, ATS, INC.
	MMPHTNMADS2	4E	TN	MMPHTNMADS2	4E	TN	AT&T LOCAL
	MMPHTNSZDS0	5E	TN	MMPHTNSZDS0	5E	TN	TIME WARNER COMMUNICATIONS AXS OF MEMPHIS, TN
	NSVL.TN02DS0	5E	TN	MMPHTNMADS4	POI	TN	NEWSOUTH COMMUNICATIONS CORP
	NSVNTNBWDS4	SMX	TN	MMPHTNMADS6	DS	TN	ITC DELTA COM - TN
	HRNNMDSRS0	RS	MS	HRNNMDSRS0	RS	MS	ITC DELTA COM - MS
	MMPHTNMADS5	DRM	TN	MMPHTNMADS5	DRM	TN	NETWORK TELEPHONE CORPORATION - TN
	MMPKTNLMDS0	5E	TN	MMPKTNLMDS0	5E	TN	XSPEDIUS, LLC - TN

# EXHIBIT C

## CLEC Marketing Strategies and Supporting Information

# MSA CLEC Marketing Memphis, TN/AR/MS Strategies BellSouth Pricing Flexibility Petition For Switched Services

CLECs	Res.	Small & Med Bus	Complex Bus	General Comments	MSA
AT&T	✓	✓	✓	AT&T offers local phone and long distance to residential, small/medium, and complex businesses according to their website. <a href="http://www.att.com">www.att.com</a>	AT&T Offers local and long distance in AL, SC, GA, NC, MS, LA, FL, TN and KY
Cinergy Communications	✓	✓	✓	Cinergy Communications is a multi-faceted telecommunications company that provides residential, small/medium and complex business services. Source: <a href="http://www.cinergy.com">www.cinergy.com</a>	Cinergy Communications serve western Kentucky and North-central Tennessee according to their website.
Network Telephone				Network Telephone provides Local and long distance voice to small and medium sized businesses. Source: <a href="http://www.networktelephone.net">www.networktelephone.net</a>	According to Network Telephone's website, they provide service and are FCC certified to provide service to AL, FL, GA, KY, LA, MS, NC, SC and TN.
Newsouth		✓		Newsouth Communications offers local and long distance service to small and medium sized businesses. Source: <a href="http://www.newsouth.com">www.newsouth.com</a>	According to Newsouth's website, they offer service in KY, TN, AL, GA, FL, NC, SC, LA and MS.
Telepak	✓	✓	✓	Telepak offers local phone service to residents, small/medium, and commercial customers. <a href="http://www.telepaknetworks.com">www.telepaknetworks.com</a>	According to Telepak's website, they offer service throughout the state of MS.
Time Warner	✓	✓	✓	Time Warner offers local and long distance telecom service to resident, small/medium and complex customers. Source: <a href="http://www.twtelecom-channels.com">www.twtelecom-channels.com</a> and <a href="http://www.timewarnercable.com">www.timewarnercable.com</a>	Time Warner offers service in GA, FL, TN, SC, and NC according to their website.
XO		✓	✓	XO offers local phone service. Source: <a href="http://www.nextlink.net/products/smallgrowing/voice/local">www.nextlink.net/products/smallgrowing/voice/local</a>	The XO offers service in GA, TN, and FL according to their website.
Xspedius/Espire		✓	✓	Xspedius/Espire offer traditional local and long distance to businesses throughout the southeastern states. Source <a href="http://www.xspedius.com">www.xspedius.com</a>	Xspedius/Espire according to their website offers telecom service throughout the southeastern U.S.
MCI	✓	✓	✓	MCI offers resident, Small/Medium, and Complex business service. Source: <a href="http://www.mci.com">www.mci.com</a>	MCI offers service in GA, FL, NC, SC, TN, AL, LA, KY and MS for the BellSouth Region.
ITC Deltacom		✓	✓	ITC DeltaCom offers Small/Medium and Complex business voice solutions for companies of all sizes. Source: <a href="http://www.deltacom.com">www.deltacom.com</a>	ITC Deltacom serves NC, SC, GA, MS, AL, FL, and TN according to their website.





The world's networking company™

## SMALL & MEDIUM BUSINESS

**View all Products and Services**

**Local, Long Distance, Toll-Free, Calling Card, and more**

**Business DSL, Dial-Up Service, and Managed Internet Service**

**Integrated Offers**

**Customer Center - AT&T BusinessDirect®**

[Terms & Conditions](#)   [Privacy Policy](#)   [Contact Us](#)  
© 2004 AT&T. All rights reserved.  
Hosted by AT&T.



The world's networking company™

## AT HOME & ON THE GO

**AT&T CallVantage(sm) Service: Phone service for broadband**

**Local, Long Distance, International, PrePaid, and more**

**DSL or Dial Up Internet Access**

**View and pay your bill online**

**See it all: At Home & On the Go**

[Terms & Conditions](#)   [Privacy Policy](#)   [Contact Us](#)  
© 2004 AT&T. All rights reserved.  
Hosted by AT&T.



The world's networking company™

## CAN YOUR NETWORK DO THIS?

Increase efficiency and agility while improving services and reducing costs. It can if the world's networking company created it to run stronger and smarter.

**Enterprise Services**

**Government**

**Wholesale**

**Manage Your Account with  
AT&T BusinessDirect®**

[Terms & Conditions](#) [Privacy Policy](#) [Contact Us](#)  
© 2004 AT&T. All rights reserved.  
Hosted by AT&T.



The world's networking company™

## SMALL & MEDIUM BUSINESS

**View all Products and Services**

**Local, Long Distance, Toll-Free, Calling Card, and more**

**Business DSL, Dial-Up Service, and Managed Internet Service**

**Integrated Offers**

**Customer Center - AT&T BusinessDirect®**

[Terms & Conditions](#)   [Privacy Policy](#)   [Contact Us](#)  
© 2004 AT&T. All rights reserved.  
Hosted by AT&T.



The world's networking company™

## AT HOME & ON THE GO

**AT&T CallVantage(sm) Service: Phone service for broadband**

**Local, Long Distance, International, PrePaid, and more**

**DSL or Dial Up Internet Access**

**View and pay your bill online**

**See it all: At Home & On the Go**

[Terms & Conditions](#)   [Privacy Policy](#)   [Contact Us](#)  
© 2004 AT&T. All rights reserved.  
Hosted by AT&T.



The world's networking company™

## CAN YOUR NETWORK DO THIS?

Increase efficiency and agility while improving services and reducing costs. It can if the world's networking company created it to run stronger and smarter.

**Enterprise Services**

**Government**

**Wholesale**

**Manage Your Account with  
AT&T BusinessDirect®**

[Terms & Conditions](#) [Privacy Policy](#) [Contact Us](#)  
© 2004 AT&T. All rights reserved.  
Hosted by AT&T.



The world's networking company™

att.com | At Home &amp; On the Go | Small &amp; Medium Business | E

AT HOME &amp; ON THE GO: PRODUCTS &amp; SERVICES | CUSTOMER CENTER | ASSISTANCE

# Calling Plans

[Home](#)
[General FAQs](#)
[VoiceMail FAQs](#)
[Repair FAQs](#)
[Calling Features](#)
[Calling Plans](#)
[Maintenance Plans](#)
[Survey](#)

## USER GUIDES

- [Local Service](#)
- [Voicemail Service](#)
- [Voicemail Quick Reference](#)
- [Voicemail \(Call\) Manager 100 & 200](#)
- [Troubleshooting Quick Reference](#)

## GEORGIA CALLING PLANS

[View](#) or [Contact Us](#) to change your current local calling plans.

**Dial up Internet access charges** outside your immediate local calling area are **not included** with the unlimited minutes.

[Local with Long Distance](#)
[Multiline](#)
[Local](#)
[More Calling Plans](#)

### Local with Long Distance

[AT&T One Rate USA<sup>SM</sup>](#)  
(availability based on area)

\$49.95 per line per month,  
available for Primary and  
Additional lines

[AT&T One Rate Advantage](#)

\$54.95 per line per month,  
available on Primary and  
Additional lines

[One Rate State](#)

\$39.95 per line per month,  
available on Primary and  
Additional lines

[One Rate Local](#)

\$32.95 per line per month,  
available on Primary and  
Additional lines

[Contact Us](#) for more local with long distance calling plans

[TOP](#)

### Local

[Call Plan Deluxe](#)

**No** longer available for sign up

[Call Plan 3 Pack](#)  
(availability based on area)

\$29.95 per month, per line  
available on Primary and  
Additional lines

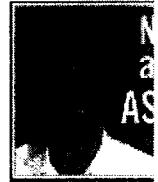
[Call Plan 2 Pack](#)  
(availability based on area)

Price varies per month, per line.  
Available on Primary and  
Additional lines

[Contact Us](#) for more local calling plans

[TOP](#)

### Multiline



## HOW TO

- [E-mail Us](#)
- [View or Print](#)
- [View a Sample](#)
- [My Local Service](#)
- [Update Local Service Features](#)
- [Order VoiceMail](#)
- [Sign Up for Local Service](#)
- [Moving?](#)
- [AT&T Online Form](#)
- [Contact Local Care](#)

[One Rate Multiline Unlimited](#)

**No** longer available for sign up

[One Rate Multiline](#)

**No** longer available for sign up



### **More Calling Plans**

[AT&T Long Distance](#)

[AT&T International](#)



[Terms & Conditions](#) | [Privacy Policy](#) | [Contact Us](#)

© 2004 AT&T. All rights reserved.



# U.S. Area Codes

## US Area Codes

The table below gives a list of US area codes for each state, with a list of important cities and towns in each of the telephone area codes. Weight is given to population and also to proximity to the border with adjoining telephone area codes. US cities and area codes shown in parentheses in *(green)* are not yet in use; in each such case, long distance area codes immediately above in the table apply to the US cities and area codes shown in *green*. Information shown in **(red)** relates to the implementation of US area codes.

The list of area codes for Canada follows the same format for the provinces and territories.

Make international telephone calls, [click here](#) to see AT&T's best offers.

A B C D E F G H I J K L M N O P Q R S T U V W X Y Z Canada

State	NPA	Cities
AK	907	(entire state)
AL	205	Ashville, Bexar, <b>Birmingham</b> , Butler, Centreville, Clanton, Columbiana, Eutaw, Hamilton, Jasper, Lincoln, Oneonta, Pell City, Tuscaloosa; <b>(659 overlay on 205 cancelled)</b>
	251	Atmore, Bay Minette, Beatrice, Brewton, Castleberry, Coffeeville, Evergreen, Finchburg, Gilbertown, Gosport, Grove Hill, Jackson, Melvin, <b>Mobile</b> , Monroeville, Peterman, Pine Apple, Tillmans Corner
	256	Albertville, Alexander City, Anniston, Arab, Athens, Boaz, Cullman, Dadeville, Decatur, Florence, Ft. Payne, Gadsden, Guntersville, <b>Huntsville</b> , Piedmont, Rockford, Russellville, Sylacauga, Talladega, Wedowee
	334	Andalusia, Auburn, Camden, Daleville, Demopolis, Dixons Mills, Dothan, Eclectic, Enterprise, Eufaula, Forest Home, Fort Deposit, Georgiana, Gordonsville, Greensboro, Greenville, Holtville, Kowaliga, Lafayette, Lanett, Linden, McKenzie, Maplesville, Marion, <b>Montgomery</b> , Nanafalia, Natasulga, Opelika, Opp, Phenix City, Pine Hill, Prattville, Red Level, Roanoke, Rock Mills, Selma, Shawmut, Sweet Water, Tallassee, Thomasville, Troy, Tuskegee, Valley, Vredenburgh, West Point, Wetumpka, Wing
AR	479	Atkins, Aurora, Belleville, Bentonville, Bluffton, Boles, Centerville, Clarksville, Danville, Dover, Eureka Springs, <b>Fayetteville</b> , <b>Ft. Smith</b> , Forum, Hector, Hindsville, Huntsville, Kingston, Mena, Rogers, Russellville, St. Paul, Salus, Siloam Springs, Springdale, Van Buren
	501	Bald Knob, Bauxite, Beebe, Benton, Bismarck, Bradford, Cabot, Casa, Cleveland, Clinton, Conway, Coy, Crystal Springs, Donaldson, England, Fairfield Bay, Ferndale, Greers Ferry, Griffithville, Heber Springs, Hot Springs, Jacksonville, Jessieville, Kensett, <b>Little Rock</b> , Lonoke, McRae, Malvern, Morrilton, Nimrod, Palarm, Pangburn, Perry, Pinnacle, Pleasant Plains, Redfield, Scotland, Searcy, Shirley, South Fourche, Springlake, Wrightsville
	870	Arkadelphia, Ashdown, Augusta, Batesville, Berryville, Blytheville, Camden, De Queen, De Valls Bluff, Des Arc, Dumas, El Dorado, Forrest City, Helena, Hope, Jasper, <b>Jonesboro</b> , Magnolia, Marshall, Monticello, Mount Ida, Mountain View, Newport, <b>Pine Bluff</b> , Prescott, Sheridan, Stuttgart, Texarkana, Trumann, Warren, West Memphis, Wynne
AS	(684)	<i>American Samoa (U.S. territory in the Pacific Ocean); currently dialed as country code +684, will become NANP area code +1 684 on 2004-10-02.</i>
AZ	480	Apache Jct., Carefree, Cave Creek, Chandler, Fountain Hills, Gilbert, Guadalupe, Higley, Mesa,

- Paradise Valley, Queen Creek, Salt River, **Scottsdale**, Sun Lakes, most of **Tempe**; east/northeast **Phoenix** area
- 520 Ajo, Benson, Bisbee, Blackwater, Bowie, Casa Blanca, Casa Grande, Cascabel, Coolidge, Douglas, Elfrida, Eloy, Florence, Hayden, Kitt Peak, Komatke, Lone Butte, Maricopa, Maricopa Village, **Nogales**, Patagonia, Pearce, Portal, Sacaton, San Manuel, San Simon, Santa Rosa, Sasabe, Sells, Sierra Vista, Stotonic, Sunizona, Superior, Tombstone, **Tucson**, West San Simon, Whitlow, Willcox; Saguaro N.P., Organ Pipe Cactus N.M.
- 602 central **Phoenix** (includes most of Phoenix and parts of some suburbs)
- 623 Avondale, Black Canyon City, Buckeye, Circle City, El Mirage, **Glendale**, New River, Peoria, Sun City, Sun City West, Surprise, Tolleson, Tonopah, Wintersburg; west/northwest **Phoenix** area
- 928 Aguila, Alpine, Arizona Village, Ash Fork, Bagdad, Black Mesa, Blue Ridge, Bonita, Bouse, Bullhead City, Bullhead City North, Cameron, Camp Verde, Castle Rock, Chinle, Chino Valley, Cibola, Clifton, Coconino Plateau, Colorado City, Cottonwood, Dennehotso, Dilcon, Duncan, Eagar, East Kingman, Ehrenberg, **Flagstaff**, Ft. Apache, Ft. Defiance, Fredonia, Ganado, Gila Bend, Globe, Golden Valley, Grand Canyon, Greasewood, Green Haven, Greer, Harquahala Valley, Hawley Lake, Heber, Holbrook, Humboldt, Hyder, Joseph City, Kaibito, Kayenta, Keams Canyon, Kingman, Kykotsmobi Village, Lake Havasu City, Lake Mohave Ranchos, Lake Pleasant, Le Chee, Leupp, Littlefield, Lukachukai, Many Farms, Marble Canyon, McNary, Meadview, Mesquite Creek, Miami, Mohave Valley, Mormon Lake, Munds Park, Page, Parker, Parker Dam, Payson, Peach Springs, Pima, Pinedale, Pinetop, Pinon Cottonwood, Polacca, Poston, Prescott, Quartzsite, Red Valley, Rock Point, Roosevelt Lake, Rough Rock, Safford, Saint Johns, Salome, San Carlos, Sanders, Sedona, Seligman, Shonto, Show Low, Snowflake, Somerton, Springerville, Supai, Teec Nos Pos, Tonto Basin, Toyey, Tsaille, Tuba City, Wellton, Whiteriver, Wickenburg, Wide Ruins, Wikieup, Williams, Window Rock, Winslow, Yarnell, Yarnell, Young, Yucca, **Yuma**; Grand Canyon N.P., Petrified Forest N.P., Canyon de Chelly N.M.

- C -

[Back to Top](#)

CA

NOTE: area codes in California follow prefix boundaries, which do not exactly coincide with municipal or county boundaries. Thus, many cities and towns, especially in the urban areas, are divided between two or more area codes. Not all such cases are indicated below.

- 209 Galt, Ione, Livingston, Lodi, Los Banos, Manteca, Merced, **Modesto**, Oakdale, Patterson, Ripon, **Stockton**, Tracy, Tuolumne Meadows, Turlock, Yosemite N.P.
- 213 core of downtown **Los Angeles** business district, including Chinatown, Echo Park, Westlake, most of Koreatown
- 310 Agoura Hills, (part of) Beverly Hills, Brentwood, Culver City, (part of) Inglewood, LAX Airport, Lennox, Malibu, Marina Del Rey, Pacific Palisades, Playa Del Rey, **Santa Monica**, Topanga, UCLA (including **UCLA Medical Center**), Venice, (part of) West Hollywood, West L.A., Westlake Village; southwestern L.A. County
- (424) Avalon (Santa Catalina Island), Carson, Compton, Dominguez Hills, El Segundo, Gardena, Hawthorne, Hermosa Beach, Lomita, (a small part of) Long Beach, Lynwood, Manhattan Beach, Rancho Palos Verdes, Redondo Beach, **San Pedro**, Torrance; *(As of 2003-10-16, the 310/424 split is once again on hold. However, it may be revived on short notice.)*
- 323 "doughnut" around the core of downtown **Los Angeles**, including Bell, Cudahy, **Huntington Park**, Hyde Park, Silver Lake, Vernon, Watts, most of **Hollywood**, Montebello, and South Gate, and parts of Alhambra, Beverly Hills, Commerce, Inglewood, Los Angeles, Monterey Park, Pasadena, West Hollywood, and other communities
- 408 Cupertino, Gilroy, Los Gatos, Milpitas, **San José**, Santa Clara, Saratoga, Sunnyvale
- 415 Brisbane, part of Daly City, Larkspur, Mill Valley, Novato, Point Reyes, **San Francisco**, San Rafael, Sausalito, almost all of Marin and San Francisco Counties plus a small part of northeast

## San Mateo County

- 510 Alameda, Berkeley, Castro Valley, Crockett, El Cerrito, El Sobrante, **Fremont**, Hayward, Newark, **Oakland**, Richmond, San Leandro, Union City; bayside East Bay
- 530 Auburn, Cameron Park, Chico, Corning, Davis, Grass Valley, Hoopa, Markleeville, Marysville, Orland, Oroville, Palermo, Paradise, Placerville, Red Bluff, **Redding**, South Lake Tahoe, Susanville, Thermalito, Truckee, Willow Creek, Willows, Woodland, Yreka, Yuba City
- 559 Avenal, Chowchilla, Clovis, Coalinga, Corcoran, Dinuba, Ducor, Exeter, **Fresno**, Hanford, Kerman, Kettleman City, Kingsburg, Lemoore, Lindsay, Madera, Mendota, Mono Hot Springs, Orange Cove, Orosi, Parlier, Porterville, Reedley, Selma, Tulare, Visalia, Woodlake, Woodville, Kings Canyon N.P., Sequoia N.P.
- 562 Artesia, Bellflower, Cerritos, Downey, La Habra, La Mirada, Lakewood, (most of) **Long Beach**, Los Alamitos, Norwalk, Paramount, Pico Rivera, Rossmore, Seal Beach, Signal Hill, Whittier
- 619 most of **San Diego** (Note: parts of San Diego are in 760 and 858); Alpine (San Diego County), Boulevard, Campo, Chula Vista, Coronado, Descanso, Dulzura, El Cajon, Imperial Beach, Jacumba, Jamul, Lakeside, (most of) Lemon Grove, (most of) National City, Pine Valley, San Ysidro, Santee, Spring Valley
- 626 Alhambra, Altadena, Arcadia, Azusa, Baldwin Park, Covina, El Monte, Glendora, La Puente, Monrovia, Monterey Park, **Pasadena**, Rosemead, San Gabriel, San Gabriel Valley
- 650 Belmont, Burlingame, Colma, (much of) Daly City, Los Altos, Menlo Park, Millbrae, **Mountain View**, Pacifica, **Palo Alto**, **Redwood City**, San Bruno, San Carlos, San Francisco Airport (SFO), **San Mateo**; "The Peninsula"
- 661 Arvin, **Bakersfield**, California Hot Springs, Castaic, Cuyama, Delano, Earlimart, Frazier Park, Gorman, Lancaster, northern Los Angeles County, McFarland, McKittrick, Mojave, Newhall, Oildale, Palmdale, Rosamond, Santa Clarita, Shafter, Taft, Tehachapi, Valermo, Wasco
- 707 Annapolis, Arcata, Asti, Benicia, Bodega Bay, Boyes Hot Springs, Calistoga, Clearlake, Cotati, Crescent City, Dixon, **Eureka**, Fairfield, Ferndale, Fort Bragg, Geyserville, Gualala, Guerneville, Healdsburg, Hopland, Lakeport, Middletown, **Napa**, Orick, Petaluma, Petrolia, Rohnert Park, St. Helena, **Santa Rosa**, Sonoma, Suisun City, Tomales, Ukiah, Vacaville, Vallejo, Willits, Yorkville, Yountville; "The Wine Country" and north coast
- 714 northern Orange County: **Anaheim**, Brea, Buena Park, (part of) Costa Mesa, Cypress, Fountain Valley, Fullerton, Huntington Beach, La Palma, **Orange**, Placentia, (most of) **Santa Ana**, Silverado, Stanton, Villa Park, Westminster, Yorba Linda
- 760 Adelanto, Apple Valley, Barstow, Bishop, Blythe, Borrego, Brawley, Bridgeport, Calexico, California City, Carlsbad, Cathedral City, China Lake, Coachella, El Centro, Encinitas, **Escondido**, Fairview, Fallbrook, Ft. Irwin, Hesperia, Indio, Inyokern, Julian, La Quinta, Lake Isabella, Lee Vining, Mammoth Lake, Mono Lake, Mt. Palomar, Needles, **Oceanside**, Onyx, Pala, **Palm Springs**, Pauma Valley, Pendleton, Phelan, Pinon Hills, Ramona, Ridgecrest, San Marcos, Twentynine Palms, Victorville, Valley Center, Vista, Warner Springs, Winterhaven, Wrightwood, Yucca Valley; Death Valley N.P., Joshua Tree N.P.; includes a small part of **San Diego** itself
- 805 Arroyo Grande, Atascadero, Bradley, Camarillo, Cambria, Cape San Martin, Cholame, Fillmore, Goleta, Grover Beach, Guadalupe, Lompoc, Los Osos, Moorpark, Morro Bay, Ojai, Oxnard, Paso Robles, Pismo Beach, Point Mugu, **San Luis Obispo**, San Simeon, **Santa Barbara**, Santa Maria, Simi Valley, Thousand Oaks, **Ventura**
- 818 Agoura, Arleta, **Burbank**, Calabasas, **Canoga Park**, Chatsworth, Encino, **Glendale**, Granada Hills, La Canada, La Crescenta, Mission Hills, Montrose, North Hollywood, Northridge, Pacoima, Reseda, San Fernando, Sepulveda, **Sherman Oaks**, Studio City, Sun Valley, Sylmar, Tarzana, Van Nuys, Woodland Hills, most of the San Fernando Valley (**Plans for an 818/747 split have been formulated, but any action on those plans is suspended pending review.**)

- 831 Aptos, Ben Lomond, Big Basin, Big Sur, Boulder Creek, Bryson, Carmel, Castroville, Greenfield, Hollister, King City, Marina, **Monterey**, Pebble Beach, **Salinas**, **San Ardo**, **San Juan Bautista**, **Santa Cruz**, **Scotts Valley**, **Seaside**, **Soledad**, **Watsonville**
- 858 Del Mar, **La Jolla**, Poway, Rancho Bernardo, Rancho Santa Fe, Solana Beach; near northern suburbs of **San Diego** (including a small part of San Diego itself)
- 909 Anza, Banning, Beaumont, Big Bear Lake, Calimesa, Canyon Lake, Chino, Chino Hills, Claremont, Colton, Corona, Crestline, Devore, Diamond Bar, Fontana, Hemet, Highland, Idyllwild, La Verne, Lake Elsinore, Lakeland Village, Mira Loma, Montclair, Moreno Valley, Murietta, Norco, **Ontario**, Perris, Pomona, Rancho Cucamonga, Redlands, Rialto, **Riverside**, Rowland Heights, **San Bernardino**, San Dimas, San Jacinto, Sun City, Temecula, Upland, Valle Vista, Walnut, Yucaipa; *(The CPUC is considering a split of 909, roughly along the county line. San Bernardino would retain 909, while Riverside splits to 951. Details will be added as they are finalized.)*
- 916 El Dorado Hills, **Fair Oaks**, Lincoln, Roseville, **Sacramento**, Walnut Grove, West Sacramento
- 925 Antioch, **Concord**, Danville, **Livermore**, Martinez, Moraga, Orinda, Pittsburg, Pleasanton, **San Ramon**, **Walnut Creek**; inland East Bay **(Plans have been formulated for a geographic split of 925, with the southern portion, including Dublin, San Ramon, Livermore, and Pleasanton, changing to the as-yet-unannounced new code, but any such plans are suspended.)**
- 949 southern Orange County: Aliso Viejo, Corona del Mar, (part of) Costa Mesa, El Toro, (most of) **Irvine**, Laguna Beach, Laguna Niguel, Mission Viejo, (most of) **Newport Beach**, Rancho Santa Margarita, San Clemente, San Juan Capistrano, (most of) Tustin
- CANCELLED OVERLAYS:** 310/424, 408/669, 415/628, 510/341, 650/764, 714/647, 909/752. The new codes may be resurrected for last-minute emergency splits.  
**SUSPENDED SPLITS:** 310/424 (overlay converted to split but then suspended and then reinstated **and now suspended again** but may be reinstated), 619/935, 707/369/627, 760/442, 818/747, 909/951, and 925/t.b.a.
- CNMI 670 Commonwealth of the Northern Mariana Islands (entire territory)
- CO 303 Arvada, Aurora, Boulder, Brighton, Broomfield, Castle Rock, Deer Trail, **Denver**, Englewood, 720 Evergreen, Fort Lupton, Georgetown, Golden, Grant, Greeley, Kiowa, Lafayette, Lakewood, Larkspur, Littleton, Longmont, Nederland, Parker, Roggen, Westminster. (720 overlays 303.)
- 719 Agate, Alamosa, Bethune, Burlington, Canon City, **Colorado Springs**, Creede, Del Norte, Fairplay, Flagler, Florence, La Junta, Lamar, Leadville, Limon, Monte Vista, **Pueblo**, Salida, Trinidad, Walsenburg, Woodland Park
- 970 Aspen, Berthoud, Carbondale, Clifton, Cortez, Craig, Dillon, Durango, Estes Park, **Fort Collins**, Fort Morgan, Frisco, **Grand Junction**, Greeley, Gunnison, Lake City, Loveland, Montrose, Pagosa Springs, Rifle, Seibert, Silverton, Steamboat Springs, Sterling, Telluride, Vail, Vona, Wiggins, Winter Park, Yuma, Mesa Verde N.P., Rocky Mountain N.P.
- CT 203 Bridgeport, Danbury, Greenwich, Meriden, **New Haven**, Norwalk, **Stamford**, Waterbury; **(475 overlay on 203 postponed indefinitely)**
- 860 Bristol, Groton, **Hartford**, Manchester, New Britain, New London, Norwich, Torrington, Vernon, Willimantic, Windsor; **(959 overlay on 860 postponed indefinitely)**
- D - [Back to Top](#)
- DC 202 Washington, D.C.
- DE 302 (entire state)
- F - [Back to Top](#)

- FL 239 Bonita Springs, Cape Coral, Everglades, Flamingo, **Fort Myers**, Fort Myers Beach, Immokalee, Lehigh Acres, Marco Island, Monroe Station, Naples, North Cape Coral, North Fort Myers, North Naples, Pine Island, Sanibel/Captiva Islands; Collier, Lee, and (mainland portion of) Monroe Counties
- 305 Coral Gables, Hialeah, Homestead, Key Biscayne, Key Largo, Key West, Marathon, **Miami**,  
786 Perrine; (305/786 overlay)
- 321 Cape Canaveral, Cocoa Beach, Grant, **Melbourne**, Merritt Island, Palm Bay, Port St. John, Titusville; **(This portion of 407 split to 321, but 321 also overlays the remainder of 407. Existing numbers in this part of 407 changed to 321.)**
- 352 Beverly Hills, Bronson, Brooksville, Clermont, Cross City, Dade City, Eustis, **Gainesville**, Inverness, Keystone Heights, Lady Lake, Leesburg, Mount Dora, **Ocala**, Spring Hill, Tavares
- 386 **western area:** Alachua, Branford, Dowling Park, Florida Sheriffs Boys Ranch, Fort White, High Springs, Jasper, Jennings, Lake Butler, Lake City, Live Oak, Luraville, Mayo, Raiford, Wellborn, White Springs  
**southern area:** Bostwick, Bunnell, Crescent City, **Daytona Beach**, De Leon Springs, DeBary, Deland, (part of) Deltona, Flagler Beach, Florahome, Interlachen, Marineland, New Smyrna Beach, Oak Hill, Orange City, Palatka, Palm Coast, Pierson, Pomona Park, Welaka; **special note:** the Osteen area of Deltona and the DeBary rate center changed from 407 to 386, thus uniting a town that was split by an area code boundary since 1965!
- 407 Altamonte Springs, Apopka, Geneva, Kenansville, Kissimmee, **Orlando**, Sanford, Winter  
321 Garden, Winter Park, Yeehaw Jct.; **(321 overlays most of this portion of 407, but 321 is also be a geographic split of the remainder of 407. Existing numbers in this part of 407 remained in 407. HOWEVER, DeBary and Deltona changed to 386 in 2001. 689 was planned as an overlay of both 407/321 and 321, but was cancelled.)**
- 561 Belle Glade, **Boca Raton**, Boynton Beach, Delray Beach, Jupiter, Lake Harbor, Pahokee, **West Palm Beach**; Palm Beach County and a small portion of Martin County
- 727 Aripeka, Clearwater, Dunedin, Hudson, Largo, New Port Richey, Palm Harbor, Pinellas Park, **St. Petersburg**, Tarpon Springs, Tierra Verde
- 772 Fort Pierce, Gifford, Hobe Sound, Indiantown, Jensen Beach, Port St. Lucie, Sebastian, Stuart, Vero Beach; Indian River and St. Lucie Counties and most of Martin County
- 813 Brandon, Land O' Lakes, Oldsmar, Plant City, Ruskin, Sun City, **Tampa**, Wesley Chapel, Wimauma, Zephyrhills
- 850 Crestview, De Funiak Springs, Ft. Walton Beach, Madison, Marianna, Milton, Panama City, **Pensacola**, Perry, Quincy, **Tallahassee**
- 863 Arcadia, Avon Park, Bartow, Clewiston, Frostproof, Haines City, La Belle, Lake Wales, **Lakeland**, Moore Haven, Okeechobee, Sebring, Wauchula, Winter Haven
- 904 Baldwin, Callahan, East Palatka, Fernandina Beach, Green Cove Springs, Hastings, Hilliard, **Jacksonville**, Jacksonville Beach, Julington, Kingsley Lake, Lawtey, Macdenny, Maxville, Middleburg, Olustee, Orange Mills, Orange Park, Ormond Beach, Palm Valley, Ponte Vedra Beach, Port Orange, St. Augustine, St. Johns, Sanderson, Starke, Taylor, Yulee
- 941 Boca Grande, Bradenton, Cape Haze, Englewood, Myakka, North Port, Palmetto, Port Charlotte, Punta Gorda, **Sarasota**, Venice; Charlotte, Manatee, and Sarasota Counties
- 954 Coral Springs, Davie, Deerfield Beach, **Ft. Lauderdale**, Hollywood, Margate, Miramar, Oakland  
(754) Park, Pompano Beach, Tamarac (754 will overlay 954)
- GA 229 Adel, **Albany**, Americus, Bainbridge, Blakely, Brooklyn, Cairo, Camilla, Chattahoochee, Cordele, Dawson (Terrell Co.), Fitzgerald, Georgetown, Moultrie, Quitman, Sylvester, Thomasville, Tifton, **Valdosta**

- 404 **Atlanta**, College Park, Decatur, East Point, Forest Park, Sandy Springs. (678 and 470 overlay both 404 and 770, although almost all 678 and 470 numbers are in the 770 area.)  
678  
470
- 478 Dublin, Eastman, Forsyth, Fort Valley, Hardwick, **Macon**, Milledgeville, Millen, Perry, Sandersville, Swainsboro, Warner Robbins, Wrightsville
- 770 Alpharetta, Barnesville, Canton, Carrollton, Cartersville, Cedartown, Chamblee, Covington, 678 Dunwoody, Gainesville, Griffin, Jackson, **Marietta**, Monroe, Newnan, **Norcross**, Peachtree 470 City, Roswell, **Smyrna**, Tucker, Winder; *surrounds, but does not include, Atlanta.* (678 and 470 overlay 404 and 770.)
- 706 **northern/eastern area:** Athens, **Augusta**, Big Canoe, Braselton, Calhoun, Carnesville, Cave Spring, Cleveland, Commerce, Cornelia, Dahlonega, Dalton, Dawsonton, Dawsonville (Dawson Co.), Eatonton, Elberton, Ellijay, Fairmount, Gibson, Hephzibah, Jasper, Jefferson, La Fayette, Madison, Martinez, Maysville, Monticello, Nicholson, Pendergrass, Ranger, Rome, Rutledge, Sparta, Summerville, Thomson, Toccoa, Watkinsville, Waynesboro, Wintersville, Wrens  
**southwestern area:** Columbus, Cusseta, Franklin, Gay, Geneva, Greenville, Hamilton, Hogansville, La Grange, Manchester, North West Point, Pine Mountain, Talbotton, Thomaston, Warm Springs, Waverly Hall, West Point, Woodbury, Woodland  
**south central area:** Yatesville  
(706 consists of three discontinuous areas; 770/678/470 and 478 touch to the east and west of Yatesville)
- 912 Brunswick, Douglas, Hinesville, Jesup, St. Marys, **Savannah**, Statesboro, Sylvania, Vidalia, Waycross

**- G -**[Back to Top](#)

- GU 671 Guam (entire territory)

**- H -**[Back to Top](#)

- HI 808 (entire state)

**- I -**[Back to Top](#)

- IA 319 Allison, Anamosa, Aplington, Argyle, Belle Plaine, Birmingham, Brandon, Brighton, Burlington, Cantril, Cedar Falls, **Cedar Rapids**, Center Point, Central City, Clarksville, Clutier, Coggon, Conesville, Denver, Dike, Dunkerton, Elberon, Ely, Fairbank, Farmington, Fort Madison, Frederika, Grandview, Grundy Center, Guernsey, Hartwick, Hazleton, Independence, Iowa City, Jesup, Keokuk, Keosauqua, Keswick, Keystone, La Porte City, Lisbon, Lockridge, Lone Tree, Martelle, Mechanicsville, Monticello, Morley, Mt. Pleasant, Mt. Sterling, Mt. Vernon, Nichols, North English, Oelwein, Olin, Onslow, Packwood, Parkersburg, Plainfield, Prairieburg, Primrose, Quasqueton, Readlyn, Reinbeck, Richland, Rowley, Solon, South English, Springville, Stanwood, Stockport, Traer, Tripoli, Troy Mills, Urbana, Victor, Vinton, Walker, Washington, Waterloo, Waverly, Wellman, West Branch, West Chester, West Liberty, Winthrop
- 515 Adel, Alden, Algona, Altoona, **Ames**, Buckeye, Clarion, Colfax, Corwith, Dallas Center, De Soto, **Des Moines**, Dexter, Dows, Earlham, Elkhart, **Ft. Dodge**, Indianola, Jefferson, Lakota, McCallsburg, Maxwell, Minburn, Nevada, Norwalk, Perry, Pleasantville, Redfield, Rippey, Runnells, Stuart, Webster City, Winterset
- 563 Alpha, Arlington, Atalissa, Baldwin, Bernard, Bettendorf, Cascade, Center Junction, Clarence, Clinton, Cresco, **Davenport**, Decorah, **Dubuque**, Fredericksburg, Hawkeye, Hopkinton, Lamont, Lawler, Lime Springs, Manchester, Maoketa, Maynard, Moscow, Muscatine, North Chester, Oran, Oxford Junction, Protivin, Quad Cities, Randalia, Rochester, Ryan, Sumner, Tipton, Worthington, Wyoming
- 641 Adair, Bagley, Britt, Buffalo Center, Centerville, Charles City, Clear Lake, Colo, Corning, Creston, Fairfield, Forest City, Garner, Greenfield, Grinnell, Guthrie Center, Hubbard, Iowa Falls, Jamaica, Kanawha, Knoxville, Liberty Center, Linden, Lorimor, Macksburg,

- Marshalltown**, Martensdale, **Mason City**, Menlo, Milo, Mingo, Monroe, New Hampton, Newton, Osceola, Oskaloosa, Otley, **Ottumwa**, Pella, Peru, Prairie City, Rowan, St. Charles, St. Marys, Truro, Yale, Zeasing
- 712 Atlantic, Bedford, Carroll, Cherokee, Clarinda, Council Bluffs, Denison, Emmetsburg, Estherville, Glenwood, Harlan, Pocahontas, Red Oak, Rockwell City, Shenandoah, Sioux Center, **Sioux City**, Spencer, Storm Lake, western
- ID 208 (entire state)
- IL 217 Beardstown, Carlinville, Carrollton, Carthage, **Champaign**, Charleston, Clinton, Danville, Decatur, Effingham, Hoopeston, Jacksonville, Lincoln, Litchfield, Lomax, Mattoon, Pana, Paxton, Rantoul, **Springfield**
- 309 **Bloomington**, Canton, Farmer City, Geneseo, Havana, Kewanee, Lacon, Moline, Monmouth, Normal, Pekin, **Peoria**, Quad Cities, Rock Island
- 312 **Chicago** (downtown area only -- see 773); **(872 overlay on 312 and 773 has been postponed indefinitely)**
- 618 Alton, Belleview, Belleville, Benton, Carbondale, Carmi, Centralia, Chester, **Collinsville**, Du Quoin, **East St. Louis**, Fairfield, Granite City, Harrisburg, Highland, Jerseyville, Marlon, Metropolis, Mt. Carmel, Mt. Vernon, Newton, Robinson, Salem, Vandalia
- 630 **Aurora**, Bartlett, Batavia, Downers Grove, Elmhurst, Geneva, Glen Ellyn, **Hinsdale**, Itasca, Lemont, Lisle, Lombard, Naperville, Plano, Roselle, West Chicago, Yorkville; **(331 overlay on 630 has been postponed indefinitely)**
- 708 Blue Island, Chicago Heights, **Cicero**, La Grange, La Grange Park, Lansing, Maywood, Oak Lawn, Oak Park, Orland Park, Palos Park, River Grove, Riverdale, Summit, Tinley Park
- 773 **Chicago** (outside downtown; includes O'Hare and Midway Airports) **(872 overlay on 312 and 773 has been postponed indefinitely)**
- 815 Crystal Lake, De Kalb, Dixon, Freeport, Harvard, **Joliet**, Kankakee, Lockport, McHenry, Oglesby, Peru, Pontiac, Princeton, Rochelle, Rock Falls, **Rockford**, Sterling, Watseka, Woodstock
- 847 Arlington Heights, Barrington, Deerfield, Des Plaines, Dundee, Elgin, **Elk Grove Village**,  
 224 Evanston, Highland Park, Lake Forest, Libertyville, **Northbrook**, Palatine, **Roselle**, Schaumburg, Skokie, Waukegan; (224 overlays 847)
- IN 219 Brook, Cedar Lake, Chesterton, Crown Point, Demotte, Dyer, East Chicago, Francesville, **Gary**, Goodland, Hammond, **Hanna**, Hebron, Highland, Hobart, Kentland, Kouts, La Crosse, **La Porte**, Lake of the Four Seasons, Lake Station, Lake Village, Lowell, Medaryville, Merrillville, Michigan City, Monon, Morocco, Mount Ayr, Portage, Remington, Rensselaer, Reynolds, **Rolling Prairie**, Roselawn, St. John, San Pierre, **Union Mills**, Valparaiso, Wanatah, **Westville**, Wheatfield, Wheeler, Whiting, Wolcott; *towns listed in red were originally slated to change to 574, but the boundary was moved.*
- 260 Albion, Andrews, Angola, Arcola, Ashley, Auburn, Avilla, Berne, Bippus, Bluffton, Bryant, Butler, Churubusco, Columbia City, Corunna, Craigville, **Cromwell**, Decatur, Etna, **Fort Wayne**, Fremont, Garrett, Geneva (Adams Co.), Hamilton, Harlan, Howe, Huntertown, Huntington, Kendallville, Kimmell, Lagrange, Lagro, Larwill, Laud, Leo, Liberty Center, **Ligonier**, Linn Grove, Markle, Mongo, Monroe, Monroeville, New Haven, North Manchester, Orland, Ossian, Pennville, Petroleum, Pleasant Lake, Pleasant Mills, Poe Hoagland, Pokagon, Portland, Preble, Reservoir, Roanoke, Saint Joe, Salamonina, Shipshewana, Sidney, Silver Lake, South Milford, South Whitley, Spencerville, Tocsin, Topeka, Tri-Lakes area, Uniondale, Urbana, Wabash, Warren, Waterloo, Wawaka, West Wabash, Wolcottville, Woodburn, Zanesville; *towns listed in red were originally slated to change to 574, but the boundary was moved.*
- 317 Brownsburg, Carmel, Fishers, Franklin, Greenfield, Greenwood, **Indianapolis**, Noblesville,

Shelbyville, Sheridan

- 574 Akron, Argos, Atwood, Bourbon, Bremen, Bristol, Buffalo, Burket, Burnettsville, Burrows, Camden, Claypool, Culver, Deer Creek, Dunlap, Elkhart, Flora, Fulton, Galveston, Goshen, Hamlet, Idaville, Kewanna, Knox, Lapaz, Leesburg, Logansport, Lucerne, Macy, Mentone, Middlebury, Milford, Millersburg, Millwood, Monterey, Monticello, Nappanee, New Carlisle, New Paris, North Judson, North Liberty, North Webster, Osceola, Pierceton, Plymouth, Rochester, Royal Center, **South Bend**, Star City, Syracuse, Tippecanoe, Twelve Mile, Wakarusa, Walkerton, Walton, Warsaw, Winamac, Wyatt, Yeoman; ***The boundaries of the 219/574/260 split were adjusted after the original announcement. Towns listed in red under 219 or 260 above were previously slated to move to 574, but were changed to 260 or back to 219.***
- 765 Alexandria, Anderson, Brookville, Connersville, Crawfordsville, Delphi, Frankfort, Geneva (Shelby County), Greencastle, Hartford City, Kokomo, **Lafayette**, Lebanon, Marion, Martinsville, Mexico, Muncie, New Castle, Peru, Richmond, Roann, Rushville, Winchester
- 812 Bedford, Bloomington, Boonville, Brazil, Charlestown, Columbus, Edinburgh, **Evansville**, Greensburg, Jasper, Madison, Morgantown, Mt. Vernon, New Albany, Scottsburg, Sellersburg, Seymour, Tell City, **Terre Haute**, Vincennes, Washington

- K -

[Back to Top](#)

- KS 316 Andale, Andover, Augusta, Bentley, Benton, Cheney, Colwich, Derby, Douglass, El Dorado, Garden Plain, Goddard, Halstead, Kechi, Leon, Mount Hope, Mulvane, Newton, Rose Hill, Sedgwick, Towanda, Valley Center, Whitewater, **Wichita**
- 620 Albert, Allen, Americus, Arkansas City, Atlanta, Beaumont, Belle Plaine, Bronson, Burdett, Burlington, Burns, Burrton, Bushton, Canton, Cassoday, Cimarron, Claflin, Clearwater, Coffeyville, Colony, Conway, Conway Springs, Cottonwood Falls, Council Grove, Devon, Dighton, **Dodge City**, Dunlap, Durham, **Emporia**, Fort Scott, Fulton, Galatia, Galva, Garden City, Geneseo, Great Bend, Hanston, Haven, Healy, Hesston, Hillsboro, Hoisington, **Hutchinson**, Independence, Iola, Jetmore, Kincaid, Larned, Latham, Lebo, Lehigh, Leoti, Leroy, Liberal, Lincolnville, Little River, Lyons, McPherson, Mapleton, Marienthal, Marion, Milberger, Murdock, Neosho Falls, Norwich, Olmitz, Parsons, Peabody, Pittsburg, Potwin, Pretty Prairie, Reading, Riverdale, Rock, Rosalia, Rozel, Scott City, Tribune, Udall, Ulysses, Walton, Wellington, Windom, Winfield
- 785 Abilene, Colby, Ellsworth, Garnet, Hays, Junction City, La Crosse, **Lawrence**, Lyndon, Manhattan, Ness City, Oakley, Oskaloosa, Ottawa, Purcell, Russell, Salina, Sharon Springs, **Topeka**, Troy
- 913 Atchison, Bush City, Edgerton, **Kansas City** KS (see also [MO-816](#)), Leavenworth, Lenexa, Mound City, Olathe, Osawatomie, Overland Park, Shawnee, Tonganoxie, Winchester
- KY 270 **Bowling Green**, Burkesville, Campbellsville, Elizabethtown, Franklin, Glasgow, Hopkinsville, Jamestown, Lebanon, Madisonville, Mayfield, Murray, **Owensboro**, Paducah, Princeton, Russellville
- 502 Bardstown, Fort Knox, **Frankfort**, Georgetown, Lawrenceburg, **Louisville**, Owenton
- 606 Albany, **Ashland**, Brooksville, Corbin, Flemingsburg, Hazard, Irvine, Liberty, London, McKee, Maysville, Middlesboro, Monticello, Morehead, Mt. Olivet, Mt. Vernon, Owingsville, Pikeville, Somerset, South Williamson, Stanford, Stanton, Williamsburg
- 859 Berea, Carlisle, Cincinnati Airport, Covington, Cynthiana, Danville, Falmouth, Harrodsburg, **Lexington**, Mt. Sterling, Paris, Richmond, Springfield, Versailles, Warsaw, Williamstown, Willisburg, Winchester

- L -

[Back to Top](#)

- LA 225 Albany, **Baton Rouge**, Donaldsonville, Gonzales, Greensburg, New Roads, Plaquemine,



Search [Account Info](#) | [Commercial Products](#) | [Residential Products](#) | [Customer Care](#) | [Our Story](#) | [News & Events](#) | [Contact Us](#)» [Home](#)» [Commercial](#)

Residential

» [Local Telephone Services](#)» [Long Distance Calling](#)» [Internet Access](#)» [Web Hosting](#)» [Customer Care](#)» [Our Story](#)» [News & Events](#)» [Contact Us](#)» [Account Info](#)» [Careers](#)[Click here for Cinergy Corp.](#)

## Residential Products

As a multi-faceted telecommunications company that provides both telephone services and Internet access, including a wide variety of personalizable features and member benefits, we offer a variety of options to residential customers.

For more information about our residential services, select your area of interest at the left.

[Contact](#) | [Sitemap](#) | [Privacy Policy](#) | [Home](#)

Search [Account Info](#)[Commercial Products](#)[Residential Products](#)[Customer Care](#)[Our Story](#)[News & Events](#)[Contact Us](#)[» Home](#)[Commercial](#)[» Voice](#)[» Internet Access](#)[» Web Hosting](#)[» Web Design & Programming](#)[» Web Applications](#)[» Private Data Networks](#)[» Service Level Agreement](#)[» Residential](#)[» Customer Care](#)[» Our Story](#)[» News & Events](#)[» Contact Us](#)[» Account Info](#)[» Careers](#)[Click here for Cinergy Corp.](#)

## Winning in the game of business

Being successful in business means finding smarter and more efficient ways to communicate. Become a winner by simplifying and broadening your communications; your customers will work better with you, and your employees will work better for you.

We work closely with our customers to understand how they communicate both internally and externally. Our solution represents an investment in your business performance: growth, productivity, cost-reduction, quality and customer satisfaction.

We are focused on meeting your needs by offering you:

- An alternative provider of local phone service.
- A single, customer-focused resource for all your voice, data and Internet needs.
- One billing statement for all your voice, data, Internet and equipment needs.
- An account manager to establish and manage your account.
- Superior customer service.

For more information on our specific services, see our product pages.

[Contact](#) | [Sitemap](#) | [Privacy Policy](#) | [Home](#)



Search



Our Story

[» Home](#)[» Commercial](#)[» Residential](#)[» Customer Care](#)[Our Story](#)[» Service Area Map](#)[» News & Events](#)[» Contact Us](#)[» Account Info](#)[» Careers](#)[Click here for  
Cinergy Corp.](#)

## Our Story

Cinergy Communications offers a complete line of communications services and products, including local service, long distance, Internet access, web hosting and telephone equipment. Our focus is to help both business and residential customers throughout Indiana, Kentucky, Tennessee and Ohio communicate more effectively.



Cinergy Communications, formerly Community Telephone, was born out of the merger of five companies located in southern Indiana and western Kentucky. They were Wright Businesses and Long Distance Management (Paducah, KY), Telemanagement Systems (Evansville, IN) and Network WCS (Evansville, IN), MarTech Communications (Bowling Green, KY) and Mercury Communications (Hopkinsville, KY).

These companies came together with the goal of collectively providing the cities they served a higher level of service with a local presence. During the last two years we've developed into a full-service, integrated communications company.

Our success then caught the attention of Cinergy Corporation, one of the nation's leading diversified energy companies. In May of 2001, we changed our name based on our affiliation with Cinergy Corporation to better reflect our core business strengths.

We are now unified under a new name, with a new look, but our management remains the same, as well as our commitment to serving Indiana, southern Ohio, western Kentucky and north-central Tennessee.

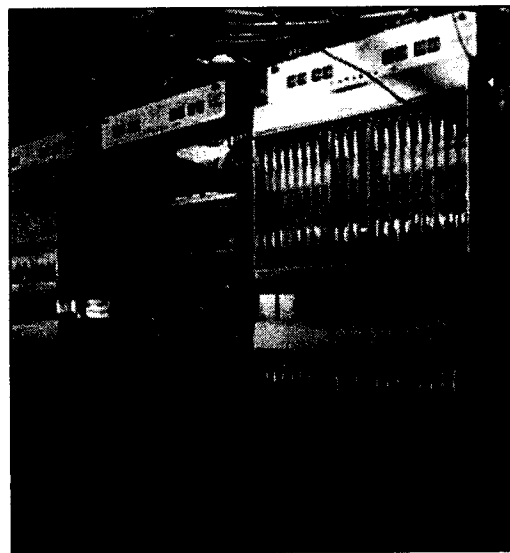
Our focus now includes an increased emphasis on research and development of new products and services. Our goal isn't simply to be the lowest-priced service, but to be the best service you can get for your money.

A strong past helps build a strong future. With three decades of industry experience, we've built a record that speaks of innovation and

vision. Among our accomplishments:

- First interconnect company (sells and services business telephone systems) in Paducah, KY -- 1969.
- First local company in our region to offer consumers a lower-cost alternative for long distance service -- 1982.
- First Internet Service Provider (ISP) in our region -- 1994.
- Pioneer in online transactional banking -- 1995.
- One of the first phone companies doing business following deregulation of local telephone service under the "Telecommunications Act of 1996."
- Industry leadership in software development for doing business over the Internet.
- Pioneer in IP Telephony -- 2003.

Our future is exciting and full of new endeavors. We are making decisions that will ensure the highest level of customer service, enhance the scope of the products and services we offer and help support the growth and future success of our customers.



[Contact](#) | [Sitemap](#) | [Privacy Policy](#) | [Home](#)



Search



**Home**

**Commercial**

**Voice**

**Local Telephone Service**

**Long Distance Service**

**Voice Mail**

**Voice & Data**

**VBX**

**Network Requirements**

**Internet Access**

**DSL Internet Access**

**High Speed Internet Access**

**Dial Up Access**

**Q-Link Plus**

**Web Hosting**

**Web Design & Programming**

**Web Applications**

**Correspond**

**Clean Mail**

**ShopSmart**

**eMediaMaker**

**Intranet Xpress**

**Private Data Networks**

**VPN**

**Service Level Agreement**

**Residential**

**Local Telephone Services**

**Basic**

**Local Service Fees - Kentucky**

**Long Distance Calling**

**Standard Long Distance**

**59 Unlimited**

**LD Extended Features**

**Internet Access**

**Web Hosting**

**Customer Care**

**How to Read Your Bill**

**FAQs -- Customer Service**

**FAQs -- Internet Help Desk**

**Local Service Feature Instructions**

**Voice Mail Instructions**

**Inside Wire Maintenance**

**Our Story**

**Service Area Map**

**News & Events**

**Contact Us**

**Distributor Services**

**Bowling Green, KY**

**Clarksville, TN**

**Evansville, IN**

**Franklin, TN**

**Hopkinsville, KY**

**Louisville, KY**

**Madisonville, KY**

**Owensboro, KY**

**Paducah, KY**

**Account Info**

**Careers**

[Contact](#) | [Sitemap](#) | [Privacy Policy](#) | [Home](#)



Search



## Now you have a Choice!

- » [Home](#)
- » [Commercial](#)
- » [Residential](#)
  - » [Local Telephone Services](#)
  - » [Long Distance Calling](#)
  - » [Internet Access](#)
  - » [Web Hosting](#)
- » [Customer Care](#)
- » [Our Story](#)
- » [News & Events](#)
- » [Contact Us](#)
- » [Account Info](#)
- » [Careers](#)

**CINERGY**  
Click here for  
Cinergy Corp.

Cinergy Communications now offers local telephone service that gives you our most popular enhancements for one low price.

- o **KEEP** your current phone number
- o **FREE** 60 minutes of long distance
- o **FREE** Caller ID with Name
- o **FREE** Call Waiting (with Caller ID)
- o **FREE** 3-way Calling
- o **NO FEE** to switch you over<sup>1</sup>



Click [HERE](#) for a list of frequently asked questions about our local phone service.

### Sign up now!

Sign up for local telephone service from Cinergy Communications right now through our completely secure sign-up wizard. Start by entering the telephone number you want to switch:

(       )       -

### Find out more...

Looking for more information about our local telephone service? Just enter the first six digits of your phone number, including your area code, to find out what services we offer in your area. (We do not record your number.)

(       )       -

XXXX

**If you do not currently have telephone service and need new service set up in your home, or if you need to add additional lines to your existing service, or have multiple lines to transfer, please call 1-866-304-7208 for details.**

**If you are switching from another telephone provider and have DSL service that you wish to keep, you cannot sign-up for service online. You must call 1-866-304-7208 to sign-up for telephone service with Cinergy Communications.**

Local service from Cinergy Communications is available for as little as **\$21.95<sup>2</sup> per month!** Yes, that price includes Call Waiting and Caller ID (with name), plus 60 minutes of free Long Distance calling each month and other service features.

With local service from Cinergy Communications, you can choose the package that best fits your needs and your budget!

<sup>1</sup> Most telephone companies charge a conversion fee to switch a customer to their service or switch away from their service (this is a fee that phone companies charge each other when customers change from one provider to another). Cinergy Communications will pay the fee

for you when switching to our service. There may be situations where your home's telephone wiring must be moved from one provider's network (wiring) interface to another. All telephone wiring starting at interface (generally located on the side of your house) and traveling into your house is the responsibility of the homeowner. Cinergy Communications can provide wiring services to move your telephone wiring if necessary. Please call our Customer Service Department at 1-800-599-1000 for pricing and further details.

<sup>2</sup> Just \$21.95 per month for your first 6 months. Offer is for residential service only. Long distance in excess of sixty minutes is billed at 6.9¢ per minute. Local toll, taxes, and other regulatory fees are not included.

[Contact](#) | [Sitemap](#) | [Privacy Policy](#) | [Home](#)





Search

Residential  
Products» [Home](#)» [Commercial](#)

Residential

» [Local Telephone  
Services](#)» [Long Distance  
Calling](#)» [Internet Access](#)» [Web Hosting](#)» [Customer Care](#)» [Our Story](#)» [News & Events](#)» [Contact Us](#)» [Account Info](#)» [Careers](#)[Click here for  
Cinergy Corp.](#)

## Residential Products

As a multi-faceted telecommunications company that provides both telephone services and Internet access, including a wide variety of personalizable features and member benefits, we offer a variety of options to residential customers.

For more information about our residential services, select your area of interest at the left.

[Contact](#) | [Sitemap](#) | [Privacy Policy](#) | [Home](#)



Search

Commercial  
Products» [Home](#)

Commercial

» [Voice](#)» [Internet Access](#)» [Web Hosting](#)» [Web Design &  
Programming](#)» [Web Applications](#)» [Private Data  
Networks](#)» [Service Level  
Agreement](#)» [Residential](#)» [Customer Care](#)» [Our Story](#)» [News & Events](#)» [Contact Us](#)» [Account Info](#)» [Careers](#)[Click here for  
Cinergy Corp.](#)

## Winning in the game of business

Being successful in business means finding smarter and more efficient ways to communicate. Become a winner by simplifying and broadening your communications; your customers will work better with you, and your employees will work better for you.

We work closely with our customers to understand how they communicate both internally and externally. Our solution represents an investment in your business performance: growth, productivity, cost-reduction, quality and customer satisfaction.

We are focused on meeting your needs by offering you:

- An alternative provider of local phone service.
- A single, customer-focused resource for all your voice, data and Internet needs.
- One billing statement for all your voice, data, Internet and equipment needs.
- An account manager to establish and manage your account.
- Superior customer service.

For more information on our specific services, see our product pages.

[Contact](#) | [Sitemap](#) | [Privacy Policy](#) | [Home](#)



IPO Central

Hoover's Books

Friday, July 30, 2004

[Home](#)
[About Hoover's](#)
[Subscription Options](#)
[Help](#)


**Our office is your office.™**  
Come in for office supplies and  
everything else your business needs.

Company Name

[Browse Directories »](#)

## Network Telephone Corp.

40 S. Palafox Pl.  
Pensacola, FL 32501 ([Map](#))

Phone: 850-432-4855  
Fax: 850-470-9641  
Toll Free: 888-432-4855

<http://www.networktelephone.net>

*Covered by David Hamerly*

### Browse Company Record

#### Fact Sheet

[People](#)
[Products/Operations](#)
[Competitors](#)
[News](#)
[Financials](#)

### Pro Premium Tools

[Family Tree Viewer](#)
[Build Company List  
\(D&B In-Depth\)](#)

### Pro Plus Tools

[Report Builder](#)
[Build Company List  
\(D&B Basic\)](#)
[International Search](#)

### Pro Tools

[Find Similar Companies](#)
[Add E-Mail News Alerts](#)
[Build Company List  
\(Hoover's In-Depth\)](#)
[Build Executive List](#)
[Custom News Search](#)
[Target IPO Companies](#)
[Stock Screener](#)

### Tools

[Profile View](#)
[Search For Reports](#)
[Download to PDA](#)
[Wireless Access](#)
[E-Mail This Page](#)

Network Telephone is a facilities-based provider of advanced integrated telecommunications services, including local and long-distance voice access and broadband Internet, in Alabama, Florida, Georgia, Kentucky, Louisiana, Mississippi, North Carolina, and Tennessee. The company has more than 114,000 lines in service to 13,000 small business customers. Network Telephone also offers Web hosting and Web site development. Chairman Ray Russenberger founded Network Telephone in 1997. Russenberger also founded Network Paging in 1985 and Network USA (now [Metrocall](#)) in 1988.

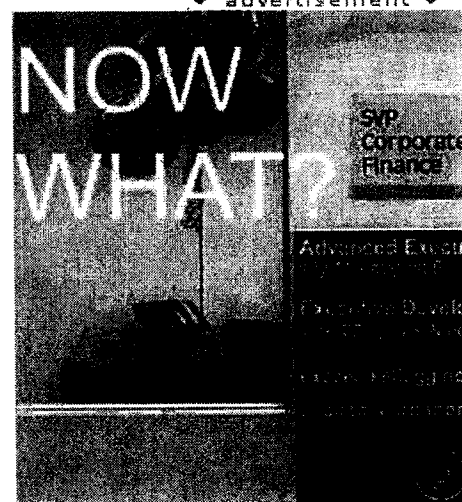
### Key Numbers

<b>Company Type</b>	Private
<b>D&amp;B D-U-N-S Number</b>	<a href="#">Subscribers Only</a>
<b>Fiscal Year-End</b>	December
<b>2002 Sales (mil.)</b>	\$44.9
<b>1-Year Sales Growth</b>	130.3%
<b>2002 Employees</b>	500
<b>More Financials</b>	

### Key People

<b>Chairman and CEO</b>	<a href="#">Ray Russenberger</a>
<b>President, COO, and Director</b>	<a href="#">Leo J. Cyr</a>
<b>CFO</b>	<a href="#">Danyelle Kennedy</a>
<b>VP Corporate Services</b>	<a href="#">Subscribers Only</a>
<b>CIO</b>	<a href="#">Subscribers Only</a>
<b>More People</b>	

advertisement



**Scott**

Scottrade: Check  
Ranked Highest  
Satisfaction. Low

**Job Op**

 [Print This Page](#)

## Industry Information

- [Telecommunications Services](#)
  - [Fixed-line Voice Services Providers \(primary\)](#)
    - [Local Exchange Carriers](#)
    - [Long-distance Carriers](#)
  - [Data Services](#)

## Top Competitors

- [ALLTEL](#)
- [BellSouth](#)
- [CenturyTel](#)

## 6 Competitors Listed For Network Telephone



## Trading Toolbox

Want to trade  
BROKERS?

[Trade Here](#)

[Trade Here](#)

## Related Products From Our Trusted Partners

 [Buy A D&B Report For Network Telephone](#) 

### Buy Reports and Books

- [Tomorrow's Telephone Technology: The VoIP Revolution](#)  
(Hoover's, Inc., Feb 1, 2004, Business Reports)
- [Data Processing Services Major Companies Report](#)  
(Harris Industry Reports, Aug 12, 2003, Business Reports)
- [Data Services: Financial Analysis Profiles](#)  
(BizMiner, May 24, 2004, Business Reports)
- [Wired Telecommunications Carriers in the US](#)  
(IBISWorld, Jan 18, 2004, Business Reports)
- [Plunkett's Telecommunications Industry Almanac 2003-2004](#)  
(Plunkett Research, Ltd., Jul 15, 2002, Books)
- [Audiotex Update: June 2003](#)  
(Worldwide Videotex, Jun 1, 2003, Business Reports)
- [Beyond the perimeter firewall](#)  
(Datamonitor, Feb 24, 2003, Business Reports)
- [ValuEngine Quantitative Industry Report for TELEPHONE UTILITIES](#)  
(ValuEngine, Inc., Nov 1, 2002, Business Reports)

[More Reports and Books »](#)

## New Hoover's Industry Digests!

Become an industry expert with a Hoover's Industry Digest. A Hoover's Digest combines industry analysis provided by our expert editors with depth coverage of five players in each industry.

[Learn More](#)

## Build Lead Lists


Use Hoover's [Lead Finder](#) to create prospect and contact lists.




**Report Search**

Search

**Additional 3rd Party Libraries**

 Indicates subscriber-only content.

 Indicates external site content that will open in a new browser window.

**Hoover's Online | IPO Central | Hoover's Books**

**Subscription Options | Newsletters | Hoover's Wireless | Help | Feedback**

**Copyright © 2004, Hoover's, Inc., ALL RIGHTS RESERVED**

**About Hoover's | Job Opportunities | Privacy Policy | Advertising Info**



## ABOUT NETWORK TELEPHONE CORPORATION

[www.networktelephone.net](http://www.networktelephone.net)

### Overview

Headquartered in Pensacola, Fla., Network Telephone Corporation is a facilities-based, second generation, data-centric competitive exchange carrier providing high speed digital subscriber line (DSL), voice over DSL (VoDSL), local and long distance voice, internet and wireless data services throughout a nine-state southeastern US footprint.

Network Telephone secured government certification to provide local and long distance telecommunications exchange in the state of Florida in July 1998. Since then, the company has embraced forefront technology and enhanced product offerings, corporate and client architecture. Network Telephone is currently FCC certified to provide service to Alabama, Florida, Georgia, Kentucky, Louisiana, Mississippi, North Carolina, South Carolina and Tennessee. In addition, more than 300 collocation agreements have been filed with BellSouth, Sprint and GTE and strategic plans include delivery of end-to-end DSL and voice choices to 60+ markets before year-end. Network Telephone concentrates primarily on servicing the small and medium sized business market.

Ray Russenberger founded Network Telephone in 1998, realizing the opportunities that deregulation presented for embracing dynamic technology. Network Telephone immediately began bundling local and long distance voice exchange with data transmission at considerable savings off of incumbent local exchange carrier (ILEC's) rates.

After less than one year in existence, Network Telephone formed a partnership with California-based Copper Mountain Network®<sup>TM</sup> to deploy their CopperEdge™ DSL concentrators and packet-based integrated access devices, securing delivery of DSL to all of Network Telephone's territories. The move presented full-service telecommunications solutions and advanced technological offerings from one powerhouse source.

Other benchmarks quickly followed. Lucent Technologies feature-rich voice over DSL (VoDSL) Pathstar™ technology joined the Network Telephone product delivery menu. Before year-end 1999, Network Telephone launched its Jackrabbit DSL product, with speeds 50 to 100 times greater than analog dial-up service and a dedicated connection at half the cost of former options, like T1 or ISDN usage-based charges. An aggressive sales team began pre-selling customers to Network Telephone's custom-designed fiber-optic circuitry in Pensacola, Fl. with a scheduled date to move to the network in the first quarter 2000.

In January 2000, Network Telephone successfully launched a new \$8 million, customized SavillExpress CLEC and SavillCare comprehensive customer care back-office infrastructure, automating services and accounting, streamlining customer profiling and management.

Since inception, Network Telephone has assembled a senior management staff representing more than 100 years of telecom experience. To date Network Telephone circuits connect approximately 19,000 lines and 4,000 customers.

[View Jobs for Network Telephone Corporation](#)



# COPPER MOUNTAIN NETWORKS, INC.

[Search](#)
[Contact Us](#)
[CUSTOMER](#)
[PARTNER](#)
[INVESTOR](#)
[CAREERS](#)
[COMPANY](#)
[PRODUCTS](#)
[SOLUTIONS](#)
[SUPPORT](#)
[LIBRARY](#)
[NEW](#)
[PRINT  
VERSION](#)

## Press Release

### Contacts:

Keith Higgins  
Copper Mountain Networks, Inc.  
1.650.687.3312  
[khiggins@coppermountain.com](mailto:khiggins@coppermountain.com)

Clare LaGrand  
Network Telephone Corporation  
1.850.432.4855, ext. 1505  
[clarel@networktelephone.net](mailto:clarel@networktelephone.net)

## Network Telephone Extends Reach of Free Powerline DSL™ Broadband Data and Voice Service for Business with T1 Solution from Copper Mountain

**Copper Mountain Helps Southeast U.S. Integrated Communications Provider Deliver Affordable T1-Enabled High-Speed Internet Service Bundles to Business Customers Regardless of Distance from CO**

**PENSACOLA, Fla., July 31, 2001**—Network Telephone, providing facilities-based broadband voice and data telecommunications services to businesses, and Copper Mountain Networks (Nasdaq: CMTN), a provider of copper-based broadband access solutions, today announce Network Telephone is utilizing T1 Line Cards from Copper Mountain to extend the reach of its affordable, business-class, bundled voice, digital subscriber line (DSL) Internet and Web services in the Southeastern U.S.

Network Telephone is installing Copper Mountain's CopperEdge® T1 Line Cards in Copper Mountain 200 Digital Subscriber Line (DSL) Concentrators already activated in 175 sites throughout the Southeastern states. The T1 capability of Copper Mountain's CopperEdge concentrators enables Network Telephone to offer concurrent high-speed Internet, multi-line voice services, and site development and hosting applications to business customers located almost anywhere within the central office (CO) serving area. Network Telephone is providing the T1-enabled access to customers located behind digital loop carriers (DLCs) or beyond the distance that can be reached using SDSL access. Network Telephone's broadband service bundle is priced to include 160 Kbps Internet connection for businesses with five to 24 telephone lines, regardless of distance. This means that Network Telephone uses to reach the customer with the high speed Internet connection.

"Network Telephone has been an industry leader in providing affordable broadband data and voice services over SDSL to small and mid-sized businesses throughout the Southeast U.S.," said Rick Gilbert, president and chief executive officer of Copper Mountain Networks. "Now, with the addition of T1-based DSL access, Network Telephone is leading the way in making its value-added solutions available to customers beyond the reach of traditional SDSL access."

"Access to affordable broadband service is increasingly vital to small and medium-sized business operations," said Network Telephone's chief executive officer and founder Ray Russenberr.



"With Copper Mountain's T1 Line Card, Network Telephone can extend the DSL bundle to business-ready data and voice services to all interested customers in every metro market it serves. Distance from the CO is no longer an issue for Network Telephone or our prospective customers."

#### **About the CopperEdge® T1 Line Card**

Copper Mountain's 12-port CopperEdge T1 Line Card is hot-swappable in CopperEdge DSL concentrators, and can be deployed concurrently with Copper Mountain's CopperEdge Fiber, ADSL, G.lite, IDSL, and SDSL Line Cards. The CopperEdge T1 Line Card enables broadband service providers to leverage CopperEdge concentrators' robust Internet Protocol (IP) service intelligence—Copper Mountain's IP IQ™—to deliver cost-effective broadband voice and high-speed data services, even to customers located beyond the reach of conventional SDSL or who are served by Digital Loop Carrier (DLC) equipment. The CopperEdge T1 Line Card is interoperable with Copper Mountain's CopperRocket® 508T Integrated Access Device (IAD) as well as industry-standard T1 customer premise equipment (CPE).

#### **About Network Telephone Corp.**

Headquartered in Pensacola, Fla., Network Telephone Corp. is a facilities-based broadband Integrated Communications Provider (ICP) using voice over digital subscriber line (VoDSL) technology to deliver local and long-distance, high-speed Internet, Web site hosting, and other site development services to small and medium-size businesses throughout the Southeast. The company employs almost 500 at its headquarters and 20 regional offices. More than 100,000 lines are in service to date. For more information about Network Telephone, visit the company Web sites, <http://www.networktelephone.net> and <http://www.powerlinedsl.com>.

#### **About Copper Mountain Networks**

Copper Mountain Networks, Inc. (Nasdaq: CMTN) manufactures intelligent DSL and aggregation equipment for central office, digital loop and multi-tenant unit (MTU) broadband networks worldwide. Its DSL solutions enable carriers and service providers to deliver cost-effective broadband performance data and voice services over existing copper telephone wiring. Its CopperEdge® 200 DSL Concentrator is deployed in some of the world's largest public networks, and its environmentally hardened CopperEdge® RT (remote terminal) DSL Concentrator extends the reach of DSL to the millions of customers served by digital loop carriers (DLCs). Copper Mountain's OnPrem™ MTU Concentrator offers a cost-effective and scalable platform for service providers. With IP IQ™, Copper Mountain's robust Internet Protocol (IP) service intelligence, service providers can maximize bandwidth utilization, support value-added broadband services, and scale to meet the demands of hundreds of thousands of subscribers. Copper Mountain's CopperRocket® CPE family and CopperCompatible® program ensure Copper Mountain DSL concentrators are interoperable with the broadest range of customer premise equipment (CPE). Customers wanting more information about Copper Mountain products or office locations worldwide can visit the company's World Wide Web site at <http://www.coppermountain.com>. For investor relations information, contact us at [IR@coppermountain.com](mailto:IR@coppermountain.com).

#### **Safe Harbor Warning**

Portions of this release contain forward-looking statements regarding future events based on current expectations, and are subject to risks and uncertainties, such as the rate of installation of the Copper Edge® T1 line cards in Network Telephone's CopperEdge® 200 DSL Concentrators. Copper Mountain wishes to caution you that there are some factors that could cause actual results to differ materially from the results indicated by such statements. These factors include, but are not limited to: the ability to expand addressable markets for high-value services like high-quality and multi-line voice in the broadband industry; quarterly fluctuations in operating results attributable to the timing and amount of orders for our products; our ability to keep pace with rapidly changing product requirements of its customers; market acceptance of our products; concentration of our revenue in a small number of customers; factors and market conditions affecting the telecommunications market, the demand for DSL technologies, the market for DSL service providers, and economic conditions generally which are beyond Copper Mountain's control. We refer you to the documents Copper Mountain files from time to time with the Securities and Exchange Commission, specifically the section titled Risk Factors in our Annual Report on Form 10-K for the year ended December 31, 2000 and other reports and filings.

with the Securities and Exchange Commission.

---

Copper Mountain and all Copper Mountain product names are trademarks of Copper Mountain Net Inc. All other marks are the property of their respective owners.

---

Copyright © 2004, Copper Mountain Networks, Inc. All Rights Reserved.  
Legal Information