

ATTACHMENT 23

Louisville, KY/IN MSA

EXHIBIT A

Competitive Overview Matrix

Shreveport, LA MSA Competitive Overview
BellSouth Pricing Flexibility Petition for Switched Services

PUBLIC VERSION

W/C Name	WC CLLI	WC ZIP address	Res Locations	Sm & Med Bus Locations	Complex Locations	Total Locations	Competitors w/switch (S) or collo (C) serving BS WC	UNE Counts through 5/04	Ported Number Counts as of 5/04/04	Tgt Segment	% of all Locations w/ WC	% of Locations Trgt'd by CLECs
Totals	15					173,332					76.3%	33.3%
BLANCHARD - MAIN PINE HILL ROYAL	BLNCLAMA	71009				4,909						
BENTON - MAIN	BNTNLAMA	71006				4,200						
DOYLINE - MAIN MAIN FULLER ST	DYLNLAAMA	71023				1,084						
GREENWOOD - MAIN NIXON & ACADEMY ST	GNWDLAMA	71033				2,558						
HAUGHTON - BUILDING LOCATION	HGNTLAKN	71037				8,746						
KEITHVILLE - MAIN	KTVLLAMA	71047				6,244						
MINDEN - MAIN	MINDLAMA	71055				11,534						
OIL CITY - MAIN ARDIE DR	OLCYLAMA	71061				1,761						
SHREVEPORT - TEXAS ST & METRO CAMPUS B	SHPTLABS	71111				28,305				A	16.3%	16.3%
SHREVEPORT - COLLEGE	SHPTLACL	71115				12,590				B	7.3%	1.7%
SHREVEPORT - HD	SHPTLAHD	71106				22,849				B	13.2%	2.9%
SHREVEPORT - MAIN	SHPTLAMA	71101				25,503				B	14.7%	7.0%
SHREVEPORT - QUEENSBORO	SHPTLAQB	71109				19,026				B	11.0%	2.1%
SHREVEPORT - SHREVEPORT SUMMER GROVE	SHPTLASG	71118				24,023				B	13.9%	3.3%

Tgt Segment:
B=Small, Med, Complex Bus.
S=Small, Med, Bus.
C=Complex Bus.
R=Res.
A=All segments
5/4/04

EXHIBIT B

Competitive Switch Information

CLEC Switch POIs / Nodes With NPA/NXXs Assigned to BellSouth Rate Centers Shown By MSA

MSA	Switch CLLI	Switch EQP TYPE	Switch State	Switch Node	Sw Node EQP TYPE	Sw Node State	Switch Node CLEC Name
Louisville, KY-IN Metropolitan Statistical Area	BLTNIN01DS7	4E	IN	LSVLKYCSKMD	POI	KY	AT&T LOCAL
	LSVLKYCSDS0	4E	KY	LSVLKYCSDS0	4E	KY	AT&T LOCAL
				LSVLKYCSFMD	POI	KY	AT&T LOCAL
	LSVLKYCSDS3	DMS	KY	LSVLKYCSDS3	DMS	KY	AT&T LOCAL
	LSVLKYOGDS0	5E2	KY	LSVLKYOGDS0	5E2	KY	NEWSOUTH COMMUNICATIONS CORP
	MMPTHN32DS0	NT5	TN	LSVLKY27X3X	POI	KY	MCIMETRO, ATS, INC.
	NSVNTN08DS0	DMH	TN	LSVLKYAPBB5	DMH	KY	NUVOX COMMUNICATIONS, INC. - TN
	LSVLKY27DS3	CSX	KY	LSVLKY27DS3	CSX	KY	CINERGY COMMUNICATIONS COMPANY - KY
	LSVLKYAPDS9	DRM	KY	LSVLKYAPDS9	DRM	KY	NETWORK TELEPHONE CORPORATION - KY
	LSVLKYCSDS4	NT5	KY	LSVLKYCSDS4	NT5	KY	AT&T BROADBAND PHONE OF KENTUCKY, LLC - KY

EXHIBIT C

CLEC Marketing Strategies and Supporting Information

Louisville, KY-IN MSA CLEC Marketing Strategies BellSouth Pricing Flexibility Petition For Switched Services

CLECs	Res.	Small & Med Bus	Complex Bus	General Comments	MSA
AT&T	✓	✓	✓	AT&T offers local phone and long distance to residential, small/medium, and complex businesses according to their website. www.att.com	AT&T Offers local and long distance in AL, SC, GA, NC, MS, LA, FL, TN and KY
Cinergy Communications	✓	✓	✓	Cinergy Communications is a multi-faceted telecommunications company that provides residential, small/medium and complex business services. Source: www.cinergy.com	Cinergy Communications serve western Kentucky and North-central Tennessee according to their website.
MCI	✓	✓	✓	MCI offers resident, Small/Medium, and Complex business service. Source: www.mci.com	MCI offers service in GA, FL, NC, SC, TN, AL, LA, KY and MS for the BellSouth Region.
Network Telephone		✓		Network Telephone provides Local and long distance voice to small and medium sized businesses. Source: www.networktelephone.net	According to Network Telephone's website, they provide service and are FCC certified to provide service to AL, FL, GA, KY, LA, MS, NC, SC and TN.
Newsouth		✓		Newsouth Communications offers local and long distance service to small and medium sized businesses. Source: www.newsouth.com	According to Newsouth's website, they offer service in KY, TN, AL, GA, FL, NC, SC, LA and MS.
Nuvox/Trivertgent		✓		NuVox provides local and long distance voice services to small/medium sized businesses. Source: springfield.nuvox.net	NuVox offers service in GA, SC, NC, FL, KY, and TN
Xspedius/Espire		✓	✓	Xspedius/Espire offer traditional local and long distance to businesses throughout the southeastern states. Source www.xspedius.com	Xspedius/Espire according to their website offers telecom service throughout the southeastern U.S.



The world's networking company™

SMALL & MEDIUM BUSINESS

View all Products and Services

Local, Long Distance, Toll-Free, Calling Card, and more

Business DSL, Dial-Up Service, and Managed Internet Service

Integrated Offers

Customer Center - AT&T BusinessDirect®

[Terms & Conditions](#) [Privacy Policy](#) [Contact Us](#)
© 2004 AT&T. All rights reserved.
Hosted by AT&T.



The world's networking company™

AT HOME & ON THE GO

AT&T CallVantage(sm) Service: Phone service for broadband

Local, Long Distance, International, PrePaid, and more

DSL or Dial Up Internet Access

View and pay your bill online

See it all: At Home & On the Go

[Terms & Conditions](#) [Privacy Policy](#) [Contact Us](#)
© 2004 AT&T. All rights reserved.
Hosted by AT&T.



The world's networking company™

CAN YOUR NETWORK DO THIS?

Increase efficiency and agility while improving services and reducing costs. It can if the world's networking company created it to run stronger and smarter.

Enterprise Services

Government

Wholesale

**Manage Your Account with
AT&T BusinessDirect®**

[Terms & Conditions](#) [Privacy Policy](#) [Contact Us](#)
© 2004 AT&T. All rights reserved.
Hosted by AT&T.



The world's networking company™

att.com | At Home & On the Go | Small & Medium Business | En

AT HOME & ON THE GO: PRODUCTS & SERVICES | CUSTOMER CENTER | ASSISTANCE

Calling Plans

Home

General FAQs

VoiceMail FAQs

Repair FAQs

Calling Features

Calling Plans

Maintenance Plans

Survey

USER GUIDES

- Local Service
- Voicemail Service
- Voicemail Quick Reference
- Voicemail (Call) Manager 100 & 200
- Troubleshooting Quick Reference

KENTUCKY CALLING PLANS

View or Contact Us to change your current local calling plans.

Dial up Internet access charges outside your immediate local calling area are **not included** with the unlimited minutes.

[Local with Long Distance](#)
[Multiline](#)

[Local](#)
[More Calling Plans](#)

Local with Long Distance

AT&T One Rate USASM

\$59.95 per line per month, available for Primary and Additional lines

AT&T One Rate Advantage

\$64.95 per line per month, available on Primary and Additional lines

One Rate State

\$45.95 per line per month, available on Primary and Additional lines

One Rate Local

\$31.95 per line per month, available on Primary and Additional lines

Contact Us for more local with long distance calling plans

TOP

Local

Call Plan Deluxe

No longer available for sign upCall Plan Unlimited with 3 Feature Package Enhanced **No** longer available for sign up

Call Plan Unlimited with 2 Feature Package Enhanced \$29.95 per line per month, available for Primary and Additional lines

Contact Us for more local calling plans

TOP

Multiline

One Rate Multiline Unlimited

No longer available for sign up

HOW TO

- E-mail Us
- View or Print
- View a Sample
- My Local Service
- Update Local Calling Features
- Order Voice Mail
- Sign Up for Service
- Moving?
- AT&T Online Form
- Contact Local Care

[One Rate Multiline](#)

No longer available for sign up



More Calling Plans

[AT&T Long Distance](#)

[AT&T International](#)



[Terms & Conditions](#) | [Privacy Policy](#) | [Contact Us](#)
© 2004 AT&T. All rights reserved.

U.S. Area Codes

US Area Codes

The table below gives a list of US area codes for each state, with a list of important cities and towns in each of the telephone area codes. Weight is given to population and also to proximity to the border with adjoining telephone area codes. US cities and area codes shown in parentheses in *(green)* are not yet in use; in each such case, long distance area codes immediately above in the table apply to the US cities and area codes shown in *green*. Information shown in **(red)** relates to the implementation of US area codes.

The list of area codes for Canada follows the same format for the provinces and territories.

Make international telephone calls, [click here](#) to see AT&T's best offers.

A B C D E F G H I J K L M N O P Q R S T U V W X Y Z Canada

State	NPA	Cities
AK	907	(entire state)
AL	205	Ashville, Bexar, Birmingham , Butler, Centreville, Clanton, Columbiana, Eutaw, Hamilton, Jasper, Lincoln, Oneonta, Pell City, Tuscaloosa; (659 overlay on 205 cancelled)
	251	Atmore, Bay Minette, Beatrice, Brewton, Castleberry, Coffeeville, Evergreen, Finchburg, Gilbertown, Gosport, Grove Hill, Jackson, Melvin, Mobile , Monroeville, Peterman, Pine Apple, Tillmans Corner
	256	Albertville, Alexander City, Anniston, Arab, Athens, Boaz, Cullman, Dadeville, Decatur, Florence, Ft. Payne, Gadsden, Guntersville, Huntsville , Piedmont, Rockford, Russellville, Sylacauga, Talladega, Wedowee
	334	Andalusia, Auburn, Camden, Daleville, Demopolis, Dixons Mills, Dothan, Eclectic, Enterprise, Eufaula, Forest Home, Fort Deposit, Georgiana, Gordonsville, Greensboro, Greenville, Holtville, Kowaliga, Lafayette, Lanett, Linden, McKenzie, Maplesville, Marion, Montgomery , Nanafalia, Notasulga, Opelika, Opp, Phenix City, Pine Hill, Prattville, Red Level, Roanoke, Rock Mills, Selma, Shawmut, Sweet Water, Tallassee, Thomasville, Troy, Tuskegee, Valley, Vredenburgh, West Point, Wetumpka, Wing
AR	479	Atkins, Aurora, Belleville, Bentonville, Bluffton, Boles, Centerville, Clarksville, Danville, Dover, Eureka Springs, Fayetteville , Ft. Smith , Forum, Hector, Hindsville , Huntsville, Kingston, Mena, Rogers, Russellville, St. Paul, Salus, Siloam Springs, Springdale, Van Buren
	501	Bald Knob, Bauxite, Beebe, Benton, Bismarck, Bradford, Cabot, Casa, Cleveland, Clinton, Conway, Coy, Crystal Springs, Donaldson, England, Fairfield Bay, Ferndale, Greers Ferry, Griffithville, Heber Springs, Hot Springs, Jacksonville, Jessieville, Kensett, Little Rock , Lonoke, McRae, Malvern, Morrilton, Nimrod, Palarm, Pangburn, Perry, Pinnacle, Pleasant Plains, Redfield, Scotland, Searcy, Shirley, South Fourche, Springlake, Wrightsville
	870	Arkadelphia, Ashdown, Augusta, Batesville, Berryville, Blytheville, Camden, De Queen, De Valls Bluff, Des Arc, Dumas, El Dorado, Forrest City, Helena, Hope, Jasper, Jonesboro , Magnolia, Marshall, Monticello, Mount Ida, Mountain View, Newport, Pine Bluff , Prescott, Sheridan, Stuttgart, Texarkana, Trumann, Warren, West Memphis, Wynne
AS	(684)	<i>American Samoa (U.S. territory in the Pacific Ocean); currently dialed as country code +684, will become NANP area code +1 684 on 2004-10-02.</i>
AZ	480	Apache Jct., Carefree, Cave Creek, Chandler, Fountain Hills, Gilbert, Guadalupe, Higley, Mesa,

- Paradise Valley, Queen Creek, Salt River, **Scottsdale**, Sun Lakes, most of **Tempe**; east/northeast **Phoenix** area
- 520 Ajo, Benson, Bisbee, Blackwater, Bowie, Casa Blanca, Casa Grande, Cascabel, Coolidge, Douglas, Elfrida, Eloy, Florence, Hayden, Kitt Peak, Komatke, Lone Butte, Maricopa, Maricopa Village, **Nogales**, Patagonia, Pearce, Portal, Sacaton, San Manuel, San Simon, Santa Rosa, Sasabe, Sells, Sierra Vista, Stotonic, Sunizona, Superior, Tombstone, **Tucson**, West San Simon, Whitlow, Willcox; Saguaro N.P., Organ Pipe Cactus N.M.
- 602 central **Phoenix** (includes most of Phoenix and parts of some suburbs)
- 623 Avondale, Black Canyon City, Buckeye, Circle City, El Mirage, **Glendale**, New River, Peoria, Sun City, Sun City West, Surprise, Tolleson, Tonopah, Wintersburg; west/northwest **Phoenix** area
- 928 Aguila, Alpine, Arizona Village, Ash Fork, Bagdad, Black Mesa, Blue Ridge, Bonita, Bouse, Bullhead City, Bullhead City North, Cameron, Camp Verde, Castle Rock, Chinle, Chino Valley, Cibola, Clifton, Coconino Plateau, Colorado City, Cottonwood, Dennehotso, Dilcon, Duncan, Eagar, East Kingman, Ehrenberg, **Flagstaff**, Ft. Apache, Ft. Defiance, Fredonia, Ganado, Gila Bend, Globe, Golden Valley, Grand Canyon, Greasewood, Green Haven, Greer, Harquahala Valley, Hawley Lake, Heber, Holbrook, Humboldt, Hyder, Joseph City, Kaibito, Kayenta, Keams Canyon, Kingman, Kykotsmobi Village, Lake Havasu City, Lake Mohave Ranchos, Lake Pleasant, Le Chee, Leupp, Littlefield, Lukachukai, Many Farms, Marble Canyon, McNary, Meadview, Mesquite Creek, Miami, Mohave Valley, Mormon Lake, Munds Park, Page, Parker, Parker Dam, Payson, Peach Springs, Pima, Pinedale, Pinetop, Pinon Cottonwood, Polacca, Poston, Prescott, Quartzsite, Red Valley, Rock Point, Roosevelt Lake, Rough Rock, Safford, Saint Johns, Salome, San Carlos, Sanders, Sedona, Seligman, Shonto, Show Low, Snowflake, Somerton, Springerville, Supai, Teec Nos Pos, Tonto Basin, Toyey, Tsailie, Tuba City, Wellton, Whiteriver, Wickenburg, Wide Ruins, Wikieup, Williams, Window Rock, Winslow, Yarnell, Yarnell, Young, Yucca, **Yuma**; Grand Canyon N.P., Petrified Forest N.P., Canyon de Chelly N.M.

- C -

[Back to Top](#)

CA

NOTE: area codes in California follow prefix boundaries, which do not exactly coincide with municipal or county boundaries. Thus, many cities and towns, especially in the urban areas, are divided between two or more area codes. Not all such cases are indicated below.

- 209 Galt, Ione, Livingston, Lodi, Los Banos, Manteca, Merced, **Modesto**, Oakdale, Patterson, Ripon, **Stockton**, Tracy, Tuolumne Meadows, Turlock, Yosemite N.P.
- 213 core of downtown **Los Angeles** business district, including Chinatown, Echo Park, Westlake, most of Koreatown
- 310 Agoura Hills, (part of) Beverly Hills, Brentwood, Culver City, (part of) Inglewood, LAX Airport, Lennox, Malibu, Marina Del Rey, Pacific Palisades, Playa Del Rey, **Santa Monica**, Topanga, UCLA (including **UCLA Medical Center**), Venice, (part of) West Hollywood, West L.A., Westlake Village; southwestern L.A. County
- (424) Avalon (Santa Catalina Island), Carson, Compton, Dominguez Hills, El Segundo, Gardena, Hawthorne, Hermosa Beach, Lomita, (a small part of) Long Beach, Lynwood, Manhattan Beach, Rancho Palos Verdes, Redondo Beach, **San Pedro**, Torrance; *(As of 2003-10-16, the 310/424 split is once again on hold. However, it may be revived on short notice.)*
- 323 "doughnut" around the core of downtown **Los Angeles**, including Bell, Cudahy, **Huntington Park**, Hyde Park, Silver Lake, Vernon, Watts, most of **Hollywood**, Montebello, and South Gate, and parts of Alhambra, Beverly Hills, Commerce, Inglewood, Los Angeles, Monterey Park, Pasadena, West Hollywood, and other communities
- 408 Cupertino, Gilroy, Los Gatos, Milpitas, **San José**, Santa Clara, Saratoga, Sunnyvale
- 415 Brisbane, part of Daly City, Larkspur, Mill Valley, Novato, Point Reyes, **San Francisco**, San Rafael, Sausalito, almost all of Marin and San Francisco Counties plus a small part of northeast

San Mateo County

- 510 Alameda, Berkeley, Castro Valley, Crockett, El Cerrito, El Sobrante, **Fremont**, Hayward, Newark, **Oakland**, Richmond, San Leandro, Union City; bayside East Bay
- 530 Auburn, Cameron Park, Chico, Corning, Davis, Grass Valley, Hoopa, Markleeville, Marysville, Orland, Oroville, Palermo, Paradise, Placerville, Red Bluff, **Redding**, South Lake Tahoe, Susanville, Thermalito, Truckee, Willow Creek, Willows, Woodland, Yreka, Yuba City
- 559 Avenal, Chowchilla, Clovis, Coalinga, Corcoran, Dinuba, Ducor, Exeter, **Fresno**, Hanford, Kerman, Kettleman City, Kingsburg, Lemoore, Lindsay, Madera, Mendota, Mono Hot Springs, Orange Cove, Orosi, Parlier, Porterville, Reedley, Selma, Tulare, Visalia, Woodlake, Woodville, Kings Canyon N.P., Sequoia N.P.
- 562 Artesia, Bellflower, Cerritos, Downey, La Habra, La Mirada, Lakewood, (most of) **Long Beach**, Los Alamitos, Norwalk, Paramount, Pico Rivera, Rossmoor, Seal Beach, Signal Hill, Whittier
- 619 most of **San Diego** (Note: parts of San Diego are in 760 and 858); Alpine (San Diego County), Boulevard, Campo, Chula Vista, Coronado, Descanso, Dulzura, El Cajon, Imperial Beach, Jacumba, Jamul, Lakeside, (most of) Lemon Grove, (most of) National City, Pine Valley, San Ysidro, Santee, Spring Valley
- 626 Alhambra, Altadena, Arcadia, Azusa, Baldwin Park, Covina, El Monte, Glendora, La Puente, Monrovia, Monterey Park, **Pasadena**, Rosemead, San Gabriel, San Gabriel Valley
- 650 Belmont, Burlingame, Colma, (much of) Daly City, Los Altos, Menlo Park, Millbrae, **Mountain View**, Pacifica, **Palo Alto**, **Redwood City**, San Bruno, San Carlos, San Francisco Airport (SFO), **San Mateo**; "The Peninsula"
- 661 Arvin, **Bakersfield**, California Hot Springs, Castaic, Cuyama, Delano, Earlimart, Frazier Park, Gorman, Lancaster, northern Los Angeles County, McFarland, McKittrick, Mojave, Newhall, Oildale, Palmdale, Rosamond, Santa Clarita, Shafter, Taft, Tehachapi, Valyermo, Wasco
- 707 Annapolis, Arcata, Asti, Benicia, Bodega Bay, Boyes Hot Springs, Calistoga, Clearlake, Cotati, Crescent City, Dixon, **Eureka**, Fairfield, Ferndale, Fort Bragg, Geyserville, Gualala, Guerneville, Healdsburg, Hopland, Lakeport, Middletown, **Napa**, Orick, Petaluma, Petrolia, Rohnert Park, St. Helena, **Santa Rosa**, Sonoma, Suisun City, Tomales, Ukiah, Vacaville, Vallejo, Willits, Yorkville, Yountville; "The Wine Country" and north coast
- 714 northern Orange County: **Anaheim**, Brea, Buena Park, (part of) Costa Mesa, Cypress, Fountain Valley, Fullerton, Huntington Beach, La Palma, **Orange**, Placentia, (most of) **Santa Ana**, Silverado, Stanton, Villa Park, Westminster, Yorba Linda
- 760 Adelanto, Apple Valley, Barstow, Bishop, Blythe, Borrego, Brawley, Bridgeport, Calexico, California City, Carlsbad, Cathedral City, China Lake, Coachella, El Centro, Encinitas, **Escondido**, Fairview, Fallbrook, Ft. Irwin, Hesperia, Indio, Inyokern, Julian, La Quinta, Lake Isabella, Lee Vining, Mammoth Lake, Mono Lake, Mt. Palomar, Needles, **Oceanside**, Onyx, Pala, **Palm Springs**, Pauma Valley, Pendleton, Phelan, Pinon Hills, Ramona, Ridgecrest, San Marcos, Twentynine Palms, Victorville, Valley Center, Vista, Warner Springs, Winterhaven, Wrightwood, Yucca Valley; Death Valley N.P., Joshua Tree N.P.; includes a small part of **San Diego** itself
- 805 Arroyo Grande, Atascadero, Bradley, Camarillo, Cambria, Cape San Martin, Cholame, Fillmore, Goleta, Grover Beach, Guadalupe, Lompoc, Los Osos, Moorpark, Morro Bay, Ojai, Oxnard, Paso Robles, Pismo Beach, Point Mugu, **San Luis Obispo**, San Simeon, **Santa Barbara**, Santa Maria, Simi Valley, Thousand Oaks, **Ventura**
- 818 Agoura, Arleta, **Burbank**, Calabasas, **Canoga Park**, Chatsworth, Encino, **Glendale**, Granada Hills, La Canada, La Crescenta, Mission Hills, Montrose, North Hollywood, Northridge, Pacoima, Reseda, San Fernando, Sepulveda, **Sherman Oaks**, Studio City, Sun Valley, Sylmar, Tarzana, Van Nuys, Woodland Hills, most of the San Fernando Valley (**Plans for an 818/747 split have been formulated, but any action on those plans is suspended pending review.**)

- 831 Aptos, Ben Lomond, Big Basin, Big Sur, Boulder Creek, Bryson, Carmel, Castroville, Greenfield, Hollister, King City, Marina, **Monterey**, Pebble Beach, **Salinas**, **San Ardo**, **San Juan Bautista**, **Santa Cruz**, **Scotts Valley**, **Seaside**, **Soledad**, **Watsonville**
- 858 Del Mar, **La Jolla**, Poway, Rancho Bernardo, Rancho Santa Fe, Solana Beach; near northern suburbs of **San Diego** (including a small part of San Diego itself)
- 909 Anza, Banning, Beaumont, Big Bear Lake, Calimesa, Canyon Lake, Chino, Chino Hills, Claremont, Colton, Corona, Crestline, Devore, Diamond Bar, Fontana, Hemet, Highland, Idyllwild, La Verne, Lake Elsinore, Lakeland Village, Mira Loma, Montclair, Moreno Valley, Murietta, Norco, **Ontario**, Perris, Pomona, Rancho Cucamonga, Redlands, Rialto, **Riverside**, Rowland Heights, **San Bernardino**, San Dimas, San Jacinto, Sun City, Temecula, Upland, Valle Vista, Walnut, Yucaipa; *(The CPUC is considering a split of 909, roughly along the county line. San Bernardino would retain 909, while Riverside splits to 951. Details will be added as they are finalized.)*
- 916 El Dorado Hills, **Fair Oaks**, Lincoln, Roseville, **Sacramento**, Walnut Grove, West Sacramento
- 925 Antioch, **Concord**, Danville, **Livermore**, Martinez, Moraga, Orinda, Pittsburg, Pleasanton, **San Ramon**, **Walnut Creek**; inland East Bay **(Plans have been formulated for a geographic split of 925, with the southern portion, including Dublin, San Ramon, Livermore, and Pleasanton, changing to the as-yet-unannounced new code, but any such plans are suspended.)**
- 949 southern Orange County: Aliso Viejo, Corona del Mar, (part of) Costa Mesa, El Toro, (most of) **Irvine**, Laguna Beach, Laguna Niguel, Mission Viejo, (most of) **Newport Beach**, Rancho Santa Margarita, San Clemente, San Juan Capistrano, (most of) Tustin
- CANCELLED OVERLAYS:** 310/424, 408/669, 415/628, 510/341, 650/764, 714/647, 909/752. The new codes may be resurrected for last-minute emergency splits.
- SUSPENDED SPLITS:** 310/424 (overlay converted to split but then suspended and then reinstated **and now suspended again** but may be reinstated), 619/935, 707/369/627, 760/442, 818/747, 909/951, and 925/t.b.a.
- CNMI 670 Commonwealth of the Northern Mariana Islands (entire territory)
- CO 303 Arvada, Aurora, Boulder, Brighton, Broomfield, Castle Rock, Deer Trail, **Denver**, Englewood, Evergreen, Fort Lupton, Georgetown, Golden, Grant, Greeley, Kiowa, Lafayette, Lakewood, Larkspur, Littleton, Longmont, Nederland, Parker, Roggen, Westminster. (720 overlays 303.)
- 720
- 719 Agate, Alamosa, Bethune, Burlington, Canon City, **Colorado Springs**, Creede, Del Norte, Fairplay, Flagler, Florence, La Junta, Lamar, Leadville, Limon, Monte Vista, **Pueblo**, Salida, Trinidad, Walsenburg, Woodland Park
- 970 Aspen, Berthoud, Carbondale, Clifton, Cortez, Craig, Dillon, Durango, Estes Park, **Fort Collins**, Fort Morgan, Frisco, **Grand Junction**, Greeley, Gunnison, Lake City, Loveland, Montrose, Pagosa Springs, Rifle, Seibert, Silverton, Steamboat Springs, Sterling, Telluride, Vail, Vona, Wiggins, Winter Park, Yuma, Mesa Verde N.P., Rocky Mountain N.P.
- CT 203 Bridgeport, Danbury, Greenwich, Meriden, **New Haven**, Norwalk, **Stamford**, Waterbury; **(475 overlay on 203 postponed indefinitely)**
- 860 Bristol, Groton, **Hartford**, Manchester, New Britain, New London, Norwich, Torrington, Vernon, Willimantic, Windsor; **(959 overlay on 860 postponed indefinitely)**
- D - [Back to Top](#)
- DC 202 Washington, D.C.
- DE 302 (entire state)
- F - [Back to Top](#)

- FL 239 Bonita Springs, Cape Coral, Everglades, Flamingo, **Fort Myers**, Fort Myers Beach, Immokalee, Lehigh Acres, Marco Island, Monroe Station, Naples, North Cape Coral, North Fort Myers, North Naples, Pine Island, Sanibel/Captiva Islands; Collier, Lee, and (mainland portion of) Monroe Counties
- 305 Coral Gables, Hialeah, Homestead, Key Biscayne, Key Largo, Key West, Marathon, **Miami**,
786 Perrine; (305/786 overlay)
- 321 Cape Canaveral, Cocoa Beach, Grant, **Melbourne**, Merritt Island, Palm Bay, Port St. John, Titusville; **(This portion of 407 split to 321, but 321 also overlays the remainder of 407. Existing numbers in this part of 407 changed to 321.)**
- 352 Beverly Hills, Bronson, Brooksville, Clermont, Cross City, Dade City, Eustis, **Gainesville**, Inverness, Keystone Heights, Lady Lake, Leesburg, Mount Dora, **Ocala**, Spring Hill, Tavares
- 386 **western area:** Alachua, Branford, Dowling Park, Florida Sheriffs Boys Ranch, Fort White, High Springs, Jasper, Jennings, Lake Butler, Lake City, Live Oak, Luraville, Mayo, Raiford, Wellborn, White Springs
southern area: Bostwick, Bunnell, Crescent City, **Daytona Beach**, De Leon Springs, DeBary, Deland, (part of) Deltona, Flagler Beach, Florahome, Interlachen, Marineland, New Smyrna Beach, Oak Hill, Orange City, Palatka, Palm Coast, Pierson, Pomona Park, Welaka; **special note:** the Osteen area of Deltona and the DeBary rate center changed from 407 to 386, thus uniting a town that was split by an area code boundary since 1965!
- 407 Altamonte Springs, Apopka, Geneva, Kenansville, Kissimmee, **Orlando**, Sanford, Winter
321 Garden, Winter Park, Yeehaw Jct.; **(321 overlays most of this portion of 407, but 321 is also be a geographic split of the remainder of 407. Existing numbers in this part of 407 remained in 407. HOWEVER, DeBary and Deltona changed to 386 in 2001. 689 was planned as an overlay of both 407/321 and 321, but was cancelled.)**
- 561 Belle Glade, **Boca Raton**, Boynton Beach, Delray Beach, Jupiter, Lake Harbor, Pahokee, **West Palm Beach**; Palm Beach County and a small portion of Martin County
- 727 Aripeka, Clearwater, Dunedin, Hudson, Largo, New Port Richey, Palm Harbor, Pinellas Park, **St. Petersburg**, Tarpon Springs, Tierra Verde
- 772 Fort Pierce, Gifford, Hobe Sound, Indiantown, Jensen Beach, Port St. Lucie, Sebastian, Stuart, Vero Beach; Indian River and St. Lucie Counties and most of Martin County
- 813 Brandon, Land O' Lakes, Oldsmar, Plant City, Ruskin, Sun City, **Tampa**, Wesley Chapel, Wimauma, Zephyrhills
- 850 Crestview, De Funiak Springs, Ft. Walton Beach, Madison, Marianna, Milton, Panama City, **Pensacola**, Perry, Quincy, **Tallahassee**
- 863 Arcadia, Avon Park, Bartow, Clewiston, Frostproof, Haines City, La Belle, Lake Wales, **Lakeland**, Moore Haven, Okeechobee, Sebring, Wauchula, Winter Haven
- 904 Baldwin, Callahan, East Palatka, Fernandina Beach, Green Cove Springs, Hastings, Hilliard, **Jacksonville**, Jacksonville Beach, Julington, Kingsley Lake, Lawtey, Macdenny, Maxville, Middleburg, Olustee, Orange Mills, Orange Park, Ormond Beach, Palm Valley, Ponte Vedra Beach, Port Orange, St. Augustine, St. Johns, Sanderson, Starke, Taylor, Yulee
- 941 Boca Grande, Bradenton, Cape Haze, Englewood, Myakka, North Port, Palmetto, Port Charlotte, Punta Gorda, **Sarasota**, Venice; Charlotte, Manatee, and Sarasota Counties
- 954 Coral Springs, Davie, Deerfield Beach, **Ft. Lauderdale**, Hollywood, Margate, Miramar, Oakland
(754) Park, Pompano Beach, Tamarac (754 will overlay 954)
- GA 229 Adel, **Albany**, Americus, Bainbridge, Blakely, Brooklyn, Cairo, Camilla, Chattahoochee, Cordele, Dawson (Terrell Co.), Fitzgerald, Georgetown, Moultrie, Quitman, Sylvester, Thomasville, Tifton, **Valdosta**

- 404 **Atlanta**, College Park, Decatur, East Point, Forest Park, Sandy Springs. (678 and 470 overlay
678 both 404 and 770, although almost all 678 and 470 numbers are in the 770 area.)
470
- 478 Dublin, Eastman, Forsyth, Fort Valley, Hardwick, **Macon**, Milledgeville, Millen, Perry,
Sandersville, Swainsboro, Warner Robbins, Wrightsville
- 770 Alpharetta, Barnesville, Canton, Carrollton, Cartersville, Cedartown, Chamblee, Covington,
678 Dunwoody, Gainesville, Griffin, Jackson, **Marietta**, Monroe, Newnan, **Norcross**, Peachtree
470 City, Roswell, **Smyrna**, Tucker, Winder; *surrounds, but does not include, Atlanta.* (678 and
470 overlay 404 and 770.)
- 706 **northern/eastern area:** Athens, **Augusta**, Big Canoe, Braselton, Calhoun, Carnesville, Cave
Spring, Cleveland, Commerce, Cornelia, Dahlonega, Dalton, Dawsonton, Dawsonville (Dawson
Co.), Eatonton, Elberton, Ellijay, Fairmount, Gibson, Hephzibah, Jasper, Jefferson, La Fayette,
Madison, Martinez, Maysville, Monticello, Nicholson, Pendergrass, Ranger, Rome, Rutledge,
Sparta, Summerville, Thomson, Toccoa, Watkinsville, Waynesboro, Wintersville, Wrens
southwestern area: Columbus, Cusseta, Franklin, Gay, Geneva, Greenville, Hamilton,
Hogansville, La Grange, Manchester, North West Point, Pine Mountain, Talbotton, Thomaston,
Warm Springs, Waverly Hall, West Point, Woodbury, Woodland
south central area: Yatesville
*(706 consists of three discontinuous areas; 770/678/470 and 478 touch to the east and west of
Yatesville)*
- 912 Brunswick, Douglas, Hinesville, Jesup, St. Marys, **Savannah**, Statesboro, Sylvania, Vidalia,
Waycross

- G -[Back to Top](#)

GU

- 671 Guam (entire territory)

- H -[Back to Top](#)

HI

- 808 (entire state)

- I -[Back to Top](#)

IA

- 319 Allison, Anamosa, Aplington, Argyle, Belle Plaine, Birmingham, Brandon, Brighton, Burlington,
Cantril, Cedar Falls, **Cedar Rapids**, Center Point, Central City, Clarksville, Clutier, Coggon,
Conesville, Denver, Dike, Dunkerton, Elberon, Ely, Fairbank, Farmington, Fort Madison,
Frederika, Grandview, Grundy Center, Guernsey, Hartwick, Hazleton, Independence, Iowa City,
Jesup, Keokuk, Keosauqua, Keswick, Keystone, La Porte City, Lisbon, Lockridge, Lone Tree,
Martelle, Mechanicsville, Monticello, Morley, Mt. Pleasant, Mt. Sterling, Mt. Vernon, Nichols,
North English, Oelwein, Olin, Onslow, Packwood, Parkersburg, Plainfield, Prairieburg, Primrose,
Quasqueton, Readlyn, Reinbeck, Richland, Rowley, Solon, South English, Springville,
Stanwood, Stockport, Traer, Tripoli, Troy Mills, Urbana, Victor, Vinton, Walker, Washington,
Waterloo, Waverly, Wellman, West Branch, West Chester, West Liberty, Winthrop
- 515 Adel, Alden, Algona, Altoona, **Ames**, Buckeye, Clarion, Colfax, Corwith, Dallas Center, De Soto,
Des Moines, Dexter, Dows, Earlham, Elkhart, **Ft. Dodge**, Indianola, Jefferson, Lakota,
McCallsburg, Maxwell, Minburn, Nevada, Norwalk, Perry, Pleasantville, Redfield, Rippey,
Runnells, Stuart, Webster City, Winterset
- 563 Alpha, Arlington, Atalissa, Baldwin, Bernard, Bettendorf, Cascade, Center Junction, Clarence,
Clinton, Cresco, **Davenport**, Decorah, **Dubuque**, Fredericksburg, Hawkeye, Hopkinton,
Lamont, Lawler, Lime Springs, Manchester, Maquoketa, Maynard, Moscow, Muscatine, North
Chester, Oran, Oxford Junction, Protivin, Quad Cities, Randalia, Rochester, Ryan, Sumner,
Tipton, Worthington, Wyoming
- 641 Adair, Bagley, Britt, Buffalo Center, Centerville, Charles City, Clear Lake, Colo, Corning,
Creston, Fairfield, Forest City, Garner, Greenfield, Grinnell, Guthrie Center, Hubbard, Iowa
Falls, Jamaica, Kanawha, Knoxville, Liberty Center, Linden, Lorimor, Macksburg,

- Marshalltown**, Martensdale, **Mason City**, Menlo, Milo, Mingo, Monroe, New Hampton, Newton, Osceola, Oskaloosa, Otley, **Ottumwa**, Pella, Peru, Prairie City, Rowan, St. Charles, St. Marys, Truro, Yale, Zearing
- 712 Atlantic, Bedford, Carroll, Cherokee, Clarinda, Council Bluffs, Denison, Emmetsburg, Estherville, Glenwood, Harlan, Pocahontas, Red Oak, Rockwell City, Shenandoah, Sioux Center, **Sioux City**, Spencer, Storm Lake, western
- ID 208 (entire state)
- IL 217 Beardstown, Carlinville, Carrollton, Carthage, **Champaign**, Charleston, Clinton, Danville, Decatur, Effingham, Hoopeston, Jacksonville, Lincoln, Litchfield, Lomax, Mattoon, Pana, Paxton, Rantoul, **Springfield**
- 309 **Bloomington**, Canton, Farmer City, Geneseo, Havana, Kewanee, Lacon, Moline, Monmouth, Normal, Pekin, **Peoria**, Quad Cities, Rock Island
- 312 **Chicago** (downtown area only -- see 773); **(872 overlay on 312 and 773 has been postponed indefinitely)**
- 618 Alton, Belleview, Belleville, Benton, Carbondale, Carmi, Centralia, Chester, **Collinsville**, Du Quoin, **East St. Louis**, Fairfield, Granite City, Harrisburg, Highland, Jerseyville, Marlon, Metropolis, Mt. Carmel, Mt. Vernon, Newton, Robinson, Salem, Vandalia
- 630 **Aurora**, Bartlett, Batavia, Downers Grove, Elmhurst, Geneva, Glen Ellyn, **Hinsdale**, Itasca, Lemont, Lisle, Lombard, Naperville, Plano, Roselle, West Chicago, Yorkville; **(331 overlay on 630 has been postponed indefinitely)**
- 708 Blue Island, Chicago Heights, **Cicero**, La Grange, La Grange Park, Lansing, Maywood, Oak Lawn, Oak Park, Orland Park, Palos Park, River Grove, Riverdale, Summit, Tinley Park
- 773 **Chicago** (outside downtown; includes O'Hare and Midway Airports) **(872 overlay on 312 and 773 has been postponed indefinitely)**
- 815 Crystal Lake, De Kalb, Dixon, Freeport, Harvard, **Joliet**, Kankakee, Lockport, McHenry, Oglesby, Peru, Pontiac, Princeton, Rochelle, Rock Falls, **Rockford**, Sterling, Watseka, Woodstock
- 847 Arlington Heights, Barrington, Deerfield, Des Plaines, Dundee, Elgin, **Elk Grove Village**,
 224 Evanston, Highland Park, Lake Forest, Libertyville, **Northbrook**, Palatine, **Roselle**, Schaumburg, Skokie, Waukegan; (224 overlays 847)
- IN 219 Brook, Cedar Lake, Chesterton, Crown Point, Demotte, Dyer, East Chicago, Francesville, **Gary**, Goodland, Hammond, **Hanna**, Hebron, Highland, Hobart, Kentland, Kouts, La Crosse, **La Porte**, Lake of the Four Seasons, Lake Station, Lake Village, Lowell, Medaryville, Merrillville, Michigan City, Monon, Morocco, Mount Ayr, Portage, Remington, Rensselaer, Reynolds, **Rolling Prairie**, Roselawn, St. John, San Pierre, **Union Mills**, Valparaiso, Wanatah, **Westville**, Wheatfield, Wheeler, Whiting, Wolcott; *towns listed in red were originally slated to change to 574, but the boundary was moved.*
- 260 Albion, Andrews, Angola, Arcola, Ashley, Auburn, Avilla, Berne, Bippus, Bluffton, Bryant, Butler, Churubusco, Columbia City, Corunna, Craigville, **Cromwell**, Decatur, Etna, **Fort Wayne**, Fremont, Garrett, Geneva (Adams Co.), Hamilton, Harlan, Howe, Huntertown, Huntington, Kendallville, Kimmell, Lagrange, Lagro, Larwill, Laud, Leo, Liberty Center, **Ligonier**, Linn Grove, Markle, Mongo, Monroe, Monroeville, New Haven, North Manchester, Orland, Ossian, Pennville, Petroleum, Pleasant Lake, Pleasant Mills, Poe Hoagland, Pokagon, Portland, Preble, Reservoir, Roanoke, Saint Joe, Salamonina, Shipshewana, Sidney, Silver Lake, South Milford, South Whitley, Spencerville, Tocsin, Topeka, Tri-Lakes area, Uniondale, Urbana, Wabash, Warren, Waterloo, Wawaka, West Wabash, Wolcottville, Woodburn, Zanesville; *towns listed in red were originally slated to change to 574, but the boundary was moved.*
- 317 Brownsburg, Carmel, Fishers, Franklin, Greenfield, Greenwood, **Indianapolis**, Noblesville,

Shelbyville, Sheridan

- 574 Akron, Argos, Atwood, Bourbon, Bremen, Bristol, Buffalo, Burket, Burnettsville, Burrows, Camden, Claypool, Culver, Deer Creek, Dunlap, Elkhart, Flora, Fulton, Galveston, Goshen, Hamlet, Idaville, Kewanna, Knox, Lapaz, Leesburg, Logansport, Lucerne, Macy, Mentone, Middlebury, Milford, Millersburg, Millwood, Monterey, Monticello, Nappanee, New Carlisle, New Paris, North Judson, North Liberty, North Webster, Osceola, Pierceton, Plymouth, Rochester, Royal Center, **South Bend**, Star City, Syracuse, Tippecanoe, Twelve Mile, Wakarusa, Walkerton, Walton, Warsaw, Winamac, Wyatt, Yeoman; *The boundaries of the 219/574/260 split were adjusted after the original announcement. Towns listed in red under 219 or 260 above were previously slated to move to 574, but were changed to 260 or back to 219.*
- 765 Alexandria, Anderson, Brookville, Connersville, Crawfordsville, Delphi, Frankfort, Geneva (Shelby County), Greencastle, Hartford City, Kokomo, **Lafayette**, Lebanon, Marion, Martinsville, Mexico, Muncie, New Castle, Peru, Richmond, Roann, Rushville, Winchester
- 812 Bedford, Bloomington, Boonville, Brazil, Charlestown, Columbus, Edinburgh, **Evansville**, Greensburg, Jasper, Madison, Morgantown, Mt. Vernon, New Albany, Scottsburg, Sellersburg, Seymour, Tell City, **Terre Haute**, Vincennes, Washington

- K -

[Back to Top](#)

- KS 316 Andale, Andover, Augusta, Bentley, Benton, Cheney, Colwich, Derby, Douglass, El Dorado, Garden Plain, Goddard, Halstead, Kechi, Leon, Mount Hope, Mulvane, Newton, Rose Hill, Sedgwick, Towanda, Valley Center, Whitewater, **Wichita**
- 620 Albert, Allen, Americus, Arkansas City, Atlanta, Beaumont, Belle Plaine, Bronson, Burdett, Burlington, Burns, Burrton, Bushton, Canton, Cassoday, Cimarron, Claflin, Clearwater, Coffeyville, Colony, Conway, Conway Springs, Cottonwood Falls, Council Grove, Devon, Dighton, **Dodge City**, Dunlap, Durham, **Emporia**, Fort Scott, Fulton, Galatia, Galva, Garden City, Geneseo, Great Bend, Hanston, Haven, Healy, Hesston, Hillsboro, Hoisington, **Hutchinson**, Independence, Iola, Jetmore, Kincaid, Larned, Latham, Lebo, Lehigh, Leoti, Leroy, Liberal, Lincolnville, Little River, Lyons, McPherson, Mapleton, Marienthal, Marion, Milberger, Murdock, Neosho Falls, Norwich, Olmitz, Parsons, Peabody, Pittsburg, Potwin, Pretty Prairie, Reading, Riverdale, Rock, Rosalia, Rozel, Scott City, Tribune, Udall, Ulysses, Walton, Wellington, Windom, Winfield
- 785 Abilene, Colby, Ellsworth, Garnet, Hays, Junction City, La Crosse, **Lawrence**, Lyndon, Manhattan, Ness City, Oakley, Oskaloosa, Ottawa, Purcell, Russell, Salina, Sharon Springs, **Topeka**, Troy
- 913 Atchison, Bush City, Edgerton, **Kansas City** KS (see also [MO-816](#)), Leavenworth, Lenexa, Mound City, Olathe, Osawatomie, Overland Park, Shawnee, Tonganoxie, Winchester
- KY 270 **Bowling Green**, Burkesville, Campbellsville, Elizabethtown, Franklin, Glasgow, Hopkinsville, Jamestown, Lebanon, Madisonville, Mayfield, Murray, **Owensboro**, Paducah, Princeton, Russellville
- 502 Bardstown, Fort Knox, **Frankfort**, Georgetown, Lawrenceburg, **Louisville**, Owenton
- 606 Albany, **Ashland**, Brooksville, Corbin, Flemingsburg, Hazard, Irvine, Liberty, London, McKee, Maysville, Middlesboro, Monticello, Morehead, Mt. Olivet, Mt. Vernon, Owingsville, Pikeville, Somerset, South Williamson, Stanford, Stanton, Williamsburg
- 859 Berea, Carlisle, Cincinnati Airport, Covington, Cynthiana, Danville, Falmouth, Harrodsburg, **Lexington**, Mt. Sterling, Paris, Richmond, Springfield, Versailles, Warsaw, Williamstown, Willisburg, Winchester

- L -

[Back to Top](#)

- LA 225 Albany, **Baton Rouge**, Donaldsonville, Gonzales, Greensburg, New Roads, Plaquemine,

Vacherie

- 318 Alexandria, Bastrop, Bossier City, Bunkie, Calcasieu, Ferriday, Grambling, Haughton, Many, Marksville, Monroe, Natchitoches, Oakdale, Ruston, **Shreveport**, Tallulah, Winnfield, Winnsboro
- 337 Abbeville, Baldwin, Crowley, De Ridder, Eunice, Franklin, Jeanerette, Jennings, Kaplan, **Lafayette**, Lake Charles, Leesville, New Iberia, Opelousas, Sulphur, Ville Platte
- 504 Bertrandville, Chalmette, Delacroix, Ironton, Jesuit Bend, Kenner, Lafitte, Lake Catherine, Metairie, Myrtle Grove, **New Orleans**, St. Bernard, Yscloskey
- 985 **north shore:** Amite City, Angie, Bogalusa, Bush, Covington, Folsom, Franklinton, **Hammond**, Independence, Kentwood, Lacombe, Madisonville, Mandeville, Mount Hermon, Pearl River, Pine, Pontchatoula
west of New Orleans: Chackbay, Edgard, Galliano, Garyville, Gibson, Golden Meadow, Grand Isle, **Houma**, Labadieville, Laplace, Larose, Leeville, Lockport, Luling, Montegut, Morgan City, Napoleonville, Norco, Paradis, Patterson, Pierre Part, Raceland, Reserve, Thibodaux
Mississippi River Delta: Buras, Carlisle, Magnolia, **Pointe à la Hache**, Port Sulphur
(985 is contiguous, but only barely. The I-55 corridor through Laplace connects the north shore of Lake Pontchartrain and the area west of New Orleans; the Delta area is joined over water on Barataria Bay.)

- M -

Back to Top

- MA 413 Adams, Amherst, Greenfield, Holyoke, Northampton, Pittsfield, **Springfield**, Ware, Westfield
- 508 Attleboro, Brockton, **Cape Cod**, Fall River, Falmouth, Framingham, Hyannis, Marlborough,
- 774 Martha's Vineyard, Nantucket, Natick, New Bedford, North Easton, Plymouth, Southbridge, Taunton, Walpole, Wayland, **Worcester** (774 overlays 508)
- 617 Belmont, **Boston** (including Brighton, Dorchester, Hyde Park, Jamaica Plain, and Roxbury),
- 857 Brookline, Cambridge, Chelsea, Everett, Milton, Newton, Quincy, Somerville, Watertown, Winthrop; (857 overlays 617)
- 781 Arlington, Braintree, Burlington, Canton, Chelsea, Cohasset, Dedham, Duxbury, Kingston,
- 339 Lexington, **Lynn**, Malden, Medford, Needham, Randolph, Reading, Revere, Rockland, Saugus, Stoughton, Wakefield, Waltham, Wellesley, Weymouth, suburbs on all sides of **Boston**. (339 overlays 781)
- 978 Andover, Athol, Barre, Beverly, Billerica, Chelmsford, Concord, Danvers, Fitchburg, Gloucester,
- 351 Haverhill, Lawrence, Leominster, **Lowell**, Maynard, Methuen, New Salem, Peabody, Salem, Sudbury, Wilmington (351 overlays 978)
- MD 301 Aspen Hill, Bethesda, Bowie, Brunswick, College Park, Cumberland, Frederick, Gaithersburg,
- 240 Golden Beach, Greenbelt, Hagerstown, Hyattsville, Laurel, Lexington Park, Montgomery Village,
- (227?) New Carrollton, Potomac, Rockville, St. Charles, St. Marys City, **Silver Spring**, Wheaton, suburbs of D.C.; (301/240 overlay, **227 overlay postponed indefinitely**)
- 410 Aberdeen, Annapolis, **Baltimore**, Berlin, Cambridge, Catonsville, Chestertown, Columbia,
- 443 Crisfield, Dundalk, Easton, Edgewood, Essex, Glen Burnie, Havre de Grace, Joppatowne, Laurel,
- (667?) Perry Hall, Pocomoke City, Prince Frederick, Reisterstown, Salisbury, Solomons, Taneytown, Towson, Westminster; (410/443 overlay, **667 overlay postponed indefinitely**)
- ME 207 (entire state)
- MI 231 Acme, Amble, Big Rapids, Cadillac, Casnovia, Cheboygan, Coral, Fruitport, Grant, Howard City, Ludington, Mackinaw City, Manistee, **Muskegon**, Newaygo, Petoskey, Ravenna, Traverse City
- 248 Birmingham, Farmington Hills, Ferndale, Holly, Leonard, (part of) Livonia, Novi, **Pontiac**,
- (947?) Rochester, **Southfield**, **Troy**, Waterford, West Bloomfield, Whitmore Lake; Oakland County; **(947 may overlay 248; overlay plan reinstated by MPSC, but now indefinitely**

postponed again)

- 269 Allegan, Athens, Augusta, Banfield, Bangor, Baroda, Battle Creek, Bellevue, Benton Harbor, Berrien Springs, Bloomingdale, Bridgman, Buchanan, Burr Oak, Cassopolis, Centreville, Climax, Coloma, Colon, Constantine, Covert, Decatur, Delton, Dowagiac, Eau Claire, Edwardsburg, Fennville, Fulton, Galesburg, Galien, Ganges, Glenn, Gobles, Grand Junction, Hamilton, Hartford, Hastings, Hickory Corners, Hopkins, **Kalamazoo**, Lacey, Lacota, Lawrence, Lawton, Marcellus, Marshall, Martin, Mattawan, Mendon, Middleville, New Buffalo, Niles, Olivet, Otsego, Paw Paw, Pine Lake, Plainwell, Pullman, Richland, St Joseph, Saugatuck, Sawyer, Schoolcraft, Scotts, Sister Lakes, South Haven, Sturgis, Three Oaks, Three Rivers, Union, Vandalia, Vicksburg, Watervliet, Wayland, White Pigeon, Woodland
- 313 Dearborn, **Detroit**, Grosse Pointe, Wayne; **special note:** Livonia numbers moved to 248, with new 7-digit numbers; **(679 may overlay 313; postponed indefinitely)**
- 517 Adrian, Albion, Burlington, Charlotte, Coldwater, Corunna, Hillsdale, Howell, Jackson, **Lansing**, Owosso, St. Johns, Tecumseh
- 586 Armada, Center Line, Eastpointe, Mt. Clemens, New Baltimore, New Haven, Richmond, Romeo, Roseville, Utica, **Warren**, Washington; Macomb County
- 616 Ada, Allendale, Alto, Belding, Borculo, Byron Center, Caledonia, Casnovia, Cedar Springs, Clarksville, Conklin, Coopersville, Dorr, Drenthe, Dutton, Freeport, Grand Haven, **Grand Rapids**, Grattan, Greenville, Holland, Hudsonville, Ionia, Jamestown, Kent City, Lake Odessa, Lowell, Marne, Moline, Orleans, Rockford, Sand Lake (Kent Co.), Saranac, Sparta, Trufant, Wyoming, Zeeland
- 734 **Ann Arbor**, (part of) Livonia, Monroe, Ypsilanti, Detroit Metro Airport (DTW); **(278 may overlay 734; postponed indefinitely)**
- 810 Algonac, Almont, Avoca, Brighton, Brown City, Byron, Capac, Clio, Columbiaville, Croswell, Davison, Deckerville, Dryden, Emmett, Fenton, **Flint**, Flushing, Goodells, Goodrich, Grand Blanc, Hadley, Hartland, Imlay City, Jeddo, Lapeer, Lennon, Lexington, Linden, Marine City, Memphis, Metamora, Montrose, Mt. Clemens, Mt. Morris, New Lothrop, North Branch, Otisville, **Port Huron**, Port Sanilac, Rankin, Roseville, St. Clair, Sandusky, Smiths Creek, Snover, Swartz Creek, Yale
- 906 Iron Mtn., Isle Royale, Marquette, Menominee, **Sault Ste. Marie**; **upper peninsula**
- 989 Alma, Alpena, Atlanta, Bad Axe, Bay City, Caro, Gaylord, Ithaca, Midland, Mt. Pleasant, Rogers City, Roscommon, **Saginaw**, Stanton
- MN 218 Bemidji, Brainerd, **Duluth**, East Grand Forks, Elbow Lake, Moorhead
- 320 Alexandria, Little Falls, **St. Cloud**, Wheaton
- 507 Canby, Fairmont, Faribault, Gaylord, Kellogg, Luverne, Mankato, New Ulm, Northfield, Redwood Falls, **Rochester**, Winona
- 612 Ft. Snelling, Lauderdale, **Minneapolis**, Richfield, St. Anthony, M/SP Airport, **no other towns**
- 651 Arden Hills, Castle Rock, Columbus, Eagan, Falcon Heights, Farmington, Harris, Lake City, Lino Lakes, Mendota, New Brighton, Red Wing, Rosemount, Roseville, **St. Paul**, Shoreview, Stark, Vermillion, Wabasha
- 763 Anoka, Blaine, Brooklyn Center, **Brooklyn Park**, Buffalo, Cambridge, Champlin, Circle Pines, Columbia Heights, Coon Rapids, Elk River, Fridley, Golden Valley, Ham Lake, Lexington, Maple Grove, Medina, Mounds View, New Hope, Plymouth, Princeton, Robbinsdale; northwestern suburbs of **Minneapolis**
- 952 Apple Valley, Belle Plaine, **Bloomington**, Burnsville, Chaska, Eden Prairie, Edina, Hopkins, Lakeville, Minnetonka, New Germany, New Prague, Norwood, St. Louis Park, Savage, Shakopee, Young America; southwestern suburbs of **Minneapolis**

MO	314	Bridgeton, Creve Coeur, Ferguson, Florissant, Hazelwood, Kirkwood, Ladue, Mehlville, Oakville, Overland, Riverview, St. Louis , Sappington, Spanish Lake, Webster Green (557 overlay on 314 cancelled)
	417	Alton, Branson, Hermitage, Houston, Joplin, Lebanon, Neosho, Nevada, Springfield , West Plains
	573	Cape Girardeau, Columbia , Fredericktown, Jefferson City , New Madrid, Poplar Bluff, Rolla, Sikeston
	636	Ballwin, Chesterfield, Crystal City, De Soto, Fenton, Festus, Foley, Herculaneum, High Hill, Hillsboro, Holstein, Imperial, Jonesburg, Manchester, Maxville, O'Fallon, Portage des Sioux, St. Charles , Troy, Truxton, Union, Valley Park, Warrenton, Washington, West Alton, Winfield
	660	Alexandria, Booneville, Butler, Clinton, Kahoka, Kirksville, Marshall, Maryville, Moberly, Oregon, Paris, Sedalia , Warsaw
	816	Blue Springs, Harrisonville, Independence, Kansas City MO (see also KS-913), Richmond, St. Joseph , Warrensburg; (975 overlay on 816 cancelled)
MP	670	Commonwealth of the Northern Mariana Islands (entire territory)
MS	228	Bay St. Louis, Biloxi , Gulfport , Hurley, Moss Point, Ocean Springs, Pascagoula, Pass Christian, Pearlinton, extreme southern tip of MS
	601	Brookhaven, Carthage, Hattiesburg, Jackson , Laurel, Lucedale, McComb, McNeill, Meridian, Natchez, Picayune, Vicksburg, Wiggins
	662	Columbus, Corinth, Greenville , Greenwood, Grenada, Oxford, Tupelo , Yazoo City
MT	406	(entire state)
- N -		Back to Top
NC	252	Cape Hatteras , Elizabeth City, Greenville , Henderson, Kill Devil Hills, Kinston, Morehead City, New Bern, Rocky Mount , Washington, Wilson
	336	Asheboro, Burlington, Greensboro , High Point , Jefferson, Lexington, Mt. Airy, Roxboro, Wilkesboro, Winston-Salem , Yanceyville
	704	Albemarle, Charlotte , Concord, Gastonia, Kannapolis, Lincolnton, Monroe, Shelby, Statesville,
	980	Wadesboro; (980 overlays 704)
	828	Asheville , Boone, Brevard, Forest City, Granite Falls, Hendersonville, Hickory, Lenoir, Morganton, Newton
	910	Dunn, Fayetteville , Jacksonville, Laurinburg, Lumberton, Rockingham, Wilmington
	919	Chapel Hill, Durham , Goldsboro, Raleigh , Sanford, Smithfield; (984 overlay on 919 cancelled)
ND	701	(entire state)
NE	308	Central City, Grand Island , Kearney, Merriman, North Platte , Scottsbluff
	402	Columbus, Hastings, Lincoln , Omaha , South Sioux City, Valentine
NH	603	(entire state)
NJ	201	Bayonne, Cliffside Park, Englewood, Fair Lawn, Hackensack , Hoboken, Jersey City , Leonia,
	551	Little Ferry, Lyndhurst, Paramus, Park Ridge, Ramsey, Rutherford, Union City; (551 overlays 201)
	609	Atlantic City , Barnegat, Browns Mills, (part of) Buena Vista, Burlington, Cape May, Cranbury, Hightstown, Lambertville, Lawrenceville, (most of) Medford, Pennington, Princeton, Trenton , Willingboro, (part of) Winslow

- 732 Asbury Park, Bound Brook, Crestwood Village, Freehold, Holmdel, Keyport, Lakewood, Long
848 Branch, Metuchen, Monmouth Jct., **New Brunswick**, Perth Amboy, Point Pleasant, Rahway, Red Bank, South River, Toms River, Woodbridge; (848 overlays 732)
- 856 Bridgeton, (part of) Buena Vista, **Camden**, Cherry Hill, Dennis, Glassboro, Haddonfield, (most of) Maurice River, (part of) Medford, Monroe, Vineland, (most of) Waterford, (part of) Winslow
- 908 Bedminster, Bernardsville, Clinton, Cranford, **Elizabeth**, Hackettstown, Linden, Plainfield, Somerville, Summit, Union, Washington, Westfield
- 973 Belleville, Bloomfield, Boonton, Butler, Caldwell, Dover, Hawthorne, Livingston, Madison,
862 Millburn, **Morristown**, **Newark**, Newton, Nutley, Orange, Passaic, Paterson, Succasunna, Verona, Wayne, Whippany; (862 overlays 973; *originally announced as 356 to overlay 973, but changed by request of the NJ-BPU*)
- NM 505 (entire state) (**505/575 split cancelled**)
- NV 702 Boulder City, Cal-Nev-Ari, Henderson, Indian Springs AFB, **Las Vegas**, Laughlin, Mesquite, Moapa, North Las Vegas; almost all of Clark County
- 775 Alamo, Battle Mountain, **Carson City**, Devil's Hole, Elko, Ely, Hawthorne, Mercury, **Pahrump**, **Reno**, Sparks, Spring Creek, Tonopah, Winnemucca; everything outside of Clark County
- NY 212 **New York City (Manhattan only)** (212/646 overlay)
646
- 315 Auburn, Geneva, Little Falls, Ontario, Oswego, Penn Yan, Potsdam, Rome, Romulus, **Syracuse**, Utica, Watertown
- 516 **Long Island (Nassau County)**: Albertson, Baldwin, Bayville, Bethpage, Elmont, Farmingdale, Floral Park, Franklin Square, Garden City, Great Neck, Hempstead, Hicksville, Jericho, Levittown, Locust Grove, Long Beach, Lynbrook, Manhasset, Massapequa, Mineola, Oceanside, Oyster Bay, Plainview, Port Washington, Roslyn, Sea Cliff, Syosset, Uniondale, Valley Stream, Westbury, Williston Park, Woodbury; exactly covers Nassau County
- 518 **Albany**, Colonie, Glens Falls, Gloversville, Schenectady, Troy
- 585 Albion, Batavia, Belmont, Brighton, Canandaigua, Dansville, Gates, Geneseo, Greece, Hall, Irondequoit, Medina, **Rochester**, Warsaw, Webster, Wellsville, Wyoming; all or most of Allegany, Genesee, Livingston, Monroe, Ontario, Orleans, and Wyoming Counties, plus parts of Steuben and Yates Counties
- 607 **Binghamton**, Corning, Cortland, Elmira, Hornell, Ithaca, Oneonta, Roscoe
- 631 **Long Island (Suffolk County)**: Amityville, Bay Shore, Brentwood, Brookhaven, Centereach, Cold Spring Harbor, Commack, Deer Park, Fishers Island, The Hamptons, Hauppauge, Holbrook, Huntington Station, Islip, Lindenhurst, Montauk, Oakdale, Patchogue, Port Jefferson, Riverhead, Rocky Point, Sayville, Smithtown, Stony Brook, West Babylon; exactly covers Suffolk County
- 716 **Buffalo**, Dunkirk, Fredonia, Jamestown, Lancaster, Lockport, Niagara Falls, Olean, Salamanca, Tonawanda; exactly coterminous with Cattaraugus, Chautauqua, Erie, and Niagara Counties, plus the Tonawanda and Oil Springs Indian Reservations.
- 718 **New York City (Bronx, Brooklyn, Queens, Staten Island)**. incl. Far Rockaway, Flushing,
347 Jamaica, Long Island City. (718/347 overlay)
- 845 Brewster, Callicoon, Carmel, Dunraven, Kingston, Middletown, Monticello, Nanuet, New City, Newburgh, Nyack, Pearl River, **Poughkeepsie**, Saugerties, Tappan, West Point
- 914 Bedford, Chappaqua, Croton Falls, Dobbs Ferry, Harrison, Larchmont, Mamaroneck, Mt. Vernon, New Rochelle, Peekskill, Purchase, Rye, Scarsdale, Tarrytown, Tuckahoe, **White Plains**, **Yonkers**; exactly covers Westchester County

- 917 **New York City** (all 5 boroughs, overlay originally for cellular, pagers, voice mail; now has some regular numbers; overlays both 212/646 and 718/347 areas)

- O -[Back to Top](#)

- OH 216 Beachwood, **Cleveland**, Euclid, Independence, Lakewood, Shaker Heights
- 330 **Akron**, Aurora, Brunswick, **Canton**, East Liverpool, Kent, Medina, Millersburg, New
- 234 Philadelphia, Northfield, Warren, Wooster, **Youngstown**; (234 overlays 330)
- 419 Bowling Green, Defiance, Findlay, Holland, Lima, Mansfield, Maumee, Sandusky, Sylvania,
- 567 **Toledo**; (567 overlays 419)
- 440 **Ashtabula**, Bedford, Berea, Chagrin Falls, Elyria, **Lorain**, Mayfield Hts., Mentor, North Olmsted, (most of) Parma, Strongsville, Vermilion
- 513 Cherry Grove, **Cincinnati**, Fairhaven, Fayetteville, Glendale, Groesbeck, Hamilton, Loveland, Madison Place, Mason, Middletown, Montgomery, Northside, Norwood, Oxford, Price Hill, Rossmoyne, Utopia; **(283 overlay on 513 cancelled)** (NOTE: Franklin moved from 513 to 937, including the cities of Franklin and Springboro, the Village of Carlisle, and the townships of Clearcreek and Franklin on 2001-05-01)
- 614 Canal Winchester, **Columbus**, Gahanna, Grove City, Harrisburg, Hilliard, Jersey, Lockbourne, New Albany, Plain City, Reynoldsburg, West Jefferson, Westerville, Worthington; **(380 overlay on 614 cancelled)**
- 740 Ashville, Athens, Bainbridge, Baltimore, Carroll, Chillicothe, Condit, Delaware, Jelloway, Johnstown, Knockemstiff, Lancaster, London, Marietta, **Marion**, Mt. Sterling, Mt. Vernon, Nevada, Newark, Pleasant View, Portsmouth, Rathbone, St. Clairsville, Steubenville, Sunbury, Uhrichsville, Washington Court House, **Zanesville**
- 937 Bardwell, Beavercreek, Bellefontaine, Blanchester, Camden, Centerville, **Dayton**, Fairborn, Greenfield, Higginsport, Hillsboro, Miamisburg, Springfield, Wilmington, Xenia; (Franklin will move from 513 to 937 on 2001-05-01; see note under 513 above)
- OK 405 Anadarko, Bethany, Bridgeport, Chickasha, Colony, Edmond, Guthrie, Hennessey, Holdenville, Midwest City, Moore, Norman, **Oklahoma City**, Pauls Valley, Shawnee, Stillwater, Weleetka, Yale
- 580 Ada, Altus, Apache, Ardmore, Clinton, Duncan, Durant, Enid, Guymon, Hugo, Idabel, Konawa, **Lawton**, Ponca City, Rush Springs, Weatherford
- 918 Bartlesville, Broken Arrow, McAlester, Muskogee, Tahlequah, **Tulsa**
- OR 503 **503/971 overlay**: Beaverton, Dallas, Gresham, Hillsboro, Lake Oswego, Milwaukie, Neskowin,
- 971 Oregon City, **Portland**, **Salem**, Tigard, Tualatin
- 503 only**: Astoria, Bay City, Beaver, Cannon Beach, Cloverdale, Garibaldi, Jewell, Knappa, Nehalem, Pacific City, Rockaway, Seaside, Tillamook, Warrenton
- 541 Albany, Ashland, Bend, Coos Bay, Corvallis, Crater Lake, **Eugene**, Florence, Grants Pass, Hermiston, Klamath Falls, La Grande, Lebanon, Lincoln City, Medford, Newport, Ontario, Pendleton, Roseburg, Springfield, The Dalles, Wolf Creek

- P -[Back to Top](#)

- PA 215 Ambler, Bristol, Churchville, Doylestown, Hatboro, Kulpsville, Langhorne, New Hope,
- 267 **Philadelphia**, Quakertown, Warrington, Willow Grove; (215/267 overlay, 445 additional overlay code suspended)
- 412 Bethel Park, Carnegie, Coraopolis, Monroeville, **Pittsburgh**, Wilkinsburg; (878 overlays 412
- 878 and 724)
- 570 Bloomsburg, Hazleton, Lewisburg, Lock Haven, Milton, Muncy, Pittston, Pottsville, **Scranton**, Selinsburg, Stroudsburg, Sunbury, **Wilkes-Barre**, Williamsport

- 610 **Allentown**, Ardmore, Bala Cynwyd, Bethlehem, Bryn Mawr, Chester, Collegeville,
 484 Conshohocken, Easton, **King of Prussia**, Norristown, Paoli, Reading, Wayne, West Chester;
 (610/484 overlay, 835 additional overlay code suspended)
- 717 Camp Hill, Carlisle, Chambersburg, Gettysburg, **Harrisburg**, **Lancaster**, Lebanon, Lewistown,
 Mechanicsburg, Shippensburg, **York**
- 724 Aliquippa, Butler, Connellsville, Greenville, Indiana, Kittanning, Latrobe, **New Castle**,
 878 Rochester, Sharon, Uniontown, Washington; *surrounds but does not include **Pittsburgh***; (878
 overlays 412 and 724)
- 814 **Altoona**, Bedford, Bellefonte, Clarion, Clearfield, **Erie**, Huntingdon, Johnstown, Meadville, Oil
 City, Punxsutawney, **State College**, Warren
- 878 (878 overlays 412 and 724)
- PR 787 Puerto Rico (entire territory); (939 overlays 787)
 939

- R -[Back to Top](#)

RI 401 (entire state)

- S -[Back to Top](#)AS (684) *American Samoa (entire territory), effective 2004-10-02*

- SC 803 Aiken, Atkins, Batesburg, Branchville, Camden, Chester, **Columbia**, Edgefield, Estill, Hampton,
 Holly Hill, Kershaw, Lancaster, Lexington, Lynchburg, Manning, Newberry, North Augusta,
 Orangeburg, Rock Hill, Sumter, Whitmire, York, central area
- 843 Beaufort, Bethune, **Charleston**, Chesterfield, Conway, Darlington, Florence, Georgetown,
 Harleysville, Hartsville, Hilton Head Island, Lodge, Mt. Pleasant, Myrtle Beach, Olanta,
 Ridgeland, St. George, Summerville, Turbeville, Walterboro, coastal areas
- 864 Anderson, Clemson, Gaffney, **Greenville**, Greenwood, Greer, Laurens, Saluda, Seneca,
Spartanburg, Union, northwestern area

SD 605 (entire state)

- T -[Back to Top](#)

- TN 423 Athens, Blountville, Bluff City, Bristol, Bulls Gap, Charleston, **Chattanooga**, Cleveland,
 Clinchport, Coker Creek, Cumberland Gap, Dayton, Deer Lodge, Englewood, Etowah, Fork
 Ridge, Greeneville, Huntsville, Jellico, **Johnson City**, Kingsport, La Follette, Madisonville,
 Midway, Morristown, New Tazewell, Newport, Niota, Oakdale, Oneida, Petros, Pikeville,
 Riceville, Robbins, Rogersville, Sneedville, Soddy Daisy, Sunbright, Surgoinsville, Sweetwater,
 Tellico Plains, Vonore, Wartburg, West Sweetwater
- 615 Carthage, Dickson, Gallatin, Franklin, Lafayette, Lebanon, Murfreesboro, **Nashville**, Portland,
 Red Boiling Springs, Smithville, Springfield
- 731 Bolivar, Brownsville, Dyersburg, Henning, Humboldt, **Jackson**, Lexington, McKenzie, Martin,
 Milan, Paris, Ripley, Savannah, Stanton, Union City, Whiteville; *Counties: Benton, Carroll,
 Chester, Crockett, Decatur, Dyer, Gibson, Hardeman, Hardin, Haywood, Henderson, Henry,
 Lake, Lauderdale, McNairy, Madison, Obion, Weakley*
- 865 Ball Play, Bean Station, Bent Creek, Chestnut Hill, Claxton, Clinton, Concord, Dandridge,
 Gatlinburg, Greenback, Halls Cross Roads, Harriman, Jefferson City, Kingston, **Knoxville**, Lake
 City, Lenoir City, Loudon, Maryville, Mascot, Maynardville, Norris, Oak Ridge, Oliver Springs,
 Powell, Rockwood, Rutledge, Sevierville, Sharps Chapel, Solway, Tate Springs, Washburn,
 White Pine, Great Smoky Mountains N.P.
- 901 Covington, **Memphis**, Somerville, West Whiteville; *Counties: Shelby, Tipton, and Fayette*

- 931 Celina, **Clarksville**, Columbia, Cookeville, Crossville, Land Between the Lakes, McEwen, McMinnville, Manchester, Shelbyville, Sparta
- TX 210 Alamo Heights, Elmendorf, Lackland AFB, Leon Springs, **San Antonio**, Shavano Park, Universal City, Wetmore
- 214 Addison, Allen, Carrollton, Celina, **Dallas**, Duncanville, Ennis, Farmers Branch, Frisco, Garland,
 972 Grand Prairie, Irving, Italy, Kaufman, Lavon, Lewisville, McKinney, Mesquite, Midlothian, Plano,
 469 Renner, Richardson, Seagoville, Terrell, Waxahatchie.
(The 214/972 boundary has been officially erased. Central Dallas and part of Grand Prairie are mostly 214; all other areas are mostly 972. However, some new 214 prefixes have been assigned back in the suburbs. 469 overlays 214 and 972.)
- 254 Breckenridge, Cameron, Cross Plains, Florence, Glen Rose, Hamilton, Hillsboro, Killeen, Marlin, Mexia, Sidney, Stephenville, Temple, **Waco**
- 281 *(see 713/281/832)*
- 325 **Abilene**, Albany, Baird, Bend, Big Lake, Big Valley, Brady, Brownwood, Coleman, Colorado City, Comanche, Goldthwaite, Junction, Llano, Mason, Ozona, Putnam, **San Angelo**, San Saba, Snyder, Stamford, Sterling City, Sweetwater
- 361 Alice, Beeville, Charco, **Corpus Christi**, Cuero, Edna, Flatonia, Goliad, Hebbronville, Kingsville, Palacios, Port Aransas, Victoria, Waelder, Yoakum, Yorktown
- 409 Anahuac, **Beaumont**, Bronson, China, Colmesneil, Double Bayou, **Galveston**, Hankamer, Hemphill, Hitchcock, Jasper, Kountze, La Marque, Lumberton, Milam, Nederland, Nome, Pineland, Port Arthur, Port Neches, Santa Fe, Sour Lake, Texas City, Wallisville, Warren, Westbury, Wildwood, Woodville
- 430 *(see 903/430)*
- 432 Ackerly, Alpine, Andrews, Big Bend N.P., Big Spring, Comstock, East Hobbs, Ft. Davis, Ft. Stockton, Garden City, Iraan, Kermit, Langtry, Marfa, **Midland**, Monahans, **Odessa**, Orla, Pecos, Presidio, Rankin, Sanderson, Seminole, Sheffield, Terlingua, Toyah, Valentine, Van Horn
- 469 *(see 214/972/469 above)*
- 512 **Austin**, Bastrop, Georgetown, Jollyville, Lampasas, Lockhart, Manchaca, Pflugerville, Rockdale, Round Rock, San Marcos, Smithville, Webberville; **(The 737 concentrated overlay plan has been indefinitely postponed by the PUCT.)**
- 682 *(see 817/682)*
- 713 *Officially, all the cities shown here are in the combined 281/713/832 overlay. However, in practice, the central area is mostly 713, with new numbers in 832, and the outer area is mostly 281, with new numbers in 832.*
- 281 **mostly 281:** Aldine, Alief, Alvin, Bammel, Barker, Baytown, Channelview, Cleveland, (part of) Houston, Humble, Katy, Kemah, League City, Richmond, Rosenberg, Spring, **Sugar Land**, Tomball
- 832 **mostly 713:** Bellaire, (most of) **Houston**, Pasadena, Southside Place, West University Place
- 806 **Amarillo**, Borger, Bovina, Dalhart, Denver City, Guthrie, Hereford, Jayton, Lamesa, **Lubbock**, Memphis, Paducah, Pampa, Plainview, Post
- 817 Arlington, Cleburne, Euless, **Fort Worth**, Granbury, Grapevine, North Richland Hills, Rhome,
 682 Roanoke, Saginaw, Weatherford; (682 overlays 817)
- 830 Boerne, Carrizo Springs, **Del Rio**, Eagle Pass, Floresville, Fredericksburg, Gonzales, Kenedy, Kerrville, Luling, Marble Falls, **New Braunfels**, Seguin, Somerset; *surrounds, but does not include, San Antonio*
- 832 *(see 713/281/832)*

- 903 Athens, Carthage, Centerville, Corsicana, Denison, Greenville, Henderson, Jacksonville, Kilgore, (430) **Longview**, Marshall, Mt. Pleasant, Palestine, Paris, Rusk, Sherman, **Texarkana**, **Tyler**; (430 will overlay 903)
- 915 **El Paso**, Fabens, Guadalupe Mountains N.P., Milehigh, Sierra Blanca
- 936 Alto, Anderson, Austonio, Batson, Broaddus, Center, Chester, Coldspring, Conroe, Corrigan, Crockett, Cushing, Cut and Shoot, Dayton, Devers, Etoile, Evergreen, Garrison, Goodrich, Grapeland, Hardin, Hilltop Lakes, Hull, **Huntsville**, Iola, Joaquin, Liberty, Livingston, Lufkin, Madisonville, Montgomery, Nacogdoches, Navasota, Normangee, North Zulch, Onalaska, Plantersville, Prairie View, Raywood, Reklaw, Ruby, San Augustine, Saratoga, Segno, Shepherd, Shiro, Tenaha, Timpson, Waller, Washington, Willis, Zavalla
- 940 Aspermont, Benjamin, Childress, Crowell, Decatur, **Denton**, Gainesville, Graham, Haskell, Mineral Wells, **Wichita Falls**
- 956 Alamo, **Brownsville**, Donna, Edcouch, Edinburg, El Sauz, Elsa, Encinal, Falcon, Falcon Heights, Harlingen, La Feria, La Grulla, La Joya, **Laredo**, Lopeno, Los Fresnos, McAllen, Mercedes, Mission, Pharr, Port Isael, Raymondville, Rio Grande City, Rio Hondo, Roma, San Benito, San Isidro, San Juan, San Ygnacio, South Padre Island, Sullivan City, Weslaco, Zapata
- 972 (see 214/972/469 above)
- 979 Angleton, Bay City, Beasley, Bellville, Borden, Brazoria, Brenham, **Bryan/College Station**, Caldwell, Calvert, Clute, Damon, Deanville, Dime Box, Eagle Lake, East Bernard, El Campo, Franklin, Freeport, Garwood, Giddings, Hearne, Hempstead, High Hill, Kurten, La Grange, Lake Jackson, Lexington, Louise, Markham, Matagorda, Moravia, Needville, New Ulm, Northrup, Plum, Schulenburg, Sealy, Snook, Tunis, Wallis, Weimar, West Columbia, Wharton

- U -[Back to Top](#)

- UT 435 Brigham City, Cedar City, Heber City, Helper, **Logan**, Moab, Nephi, Park City, Price, St. George, Tooele, Vernal.
435 surrounds the urban areas of 801/385 (Salt Lake City, Ogden, Provo) on all sides, and covers about 90% of the land area of Utah.
- 801 Alta, Holladay, Kearns, Magna, Midvale, Murray, **Salt Lake City**
- (385) **northern section:** Bountiful, Clearfield, Farmington, Kaysville, Morgan, **Ogden**;
southern section: American Fork, Goshen, Lehi, Orem, Payson, Pleasant Grove, **Provo**, Spanish Fork, Spanish Fork Canyon, Springville;
385 brackets, but does not include, **Salt Lake City**; (801/385 split postponed to 2005, and may be postponed farther.)

- V -[Back to Top](#)

- VI 340 U.S. Virgin Islands (entire territory)
- VA 276 Abingdon, Austinville, Axton, Bassett, Bland, Bluefield, Boissevain, **Bristol**, Collinsville, Galax, Hillsville, Laurel Fork, Marion, Martinsville, Max Meadows, Meadows of Dan, Ridgeway, Rocky Gap, Stuart, Sylvatus, Woolwine, Wytheville
- 434 Alberta, Allwood, Alta Vista, Amherst, Appomattox, Arvonja, Bachelors Hall, Barnesville, Beechwood, Big Island, Blackridge, Blackstone, Boydton, Brodnax, Brookneal, Buckingham, Burkeville, Capron, Charlotte Court House, **Charlottesville**, Chase City, Chatham, Clarksville, Clover, Concord, Crewe, Crozet, Danville, Dillwyn, Drakes Branch, Emporia, Eppes Fork, Farmville, Fork Union, Gladstone, Gladys, Gretna, Halifax, Hampden-Sydney, Hurt, Jarratt, Kenbridge, Keysville, La Crosse, Lawrenceville, Lovingson, **Lynchburg**, Oronoco, Palmyra, Pamplin, Piney River, Prospect, Renan, Rustburg, Sandy Level, Schuyler, Scottsville, South Boston, South Brunswick, Stanardsville, Stony Creek, Sweet Briar, Turbeville, Victoria, Virgilina, Volens, Whitmell

- 540 Brokenburg, Calverton, Catoctin, Craigsville, Criglersville, Culpeper, Dahlgren, Elkton, Fredericksburg, Front Royal, Gordonsville, Greenwood, Grottoes, **Harrisonburg**, Hot Springs, King George, Louisa, McClung, Madison, Middleburg, Mineral, Mount Gilead, Mountain Grove, New Hope, Raphine, Shenandoah, Spotsylvania, Stafford, Stanley, Staunton, The Plains, Warrenton, Waynesboro, Weyers Cave, Williamsville, Winchester
- (tba) Bedford, Blacksburg, Brownsburg, Buchanan, Buena Vista, Burnt Chimney, Christiansburg, Clifton Forge, Covington, Dublin, Ferrum, Floyd, Glasgow, Lexington, Locust Grove, Narrows, Pulaski, Radford, **Roanoke**, Rocky Mount, Salem, Stone Mountain, Union Hall, Willis; (future split, dates t.b.d.; these cities remained in 540 in the 540/276 split)
- 703 Alexandria, **Arlington**, Centreville, Engleside, Fairfax, Falls Church, Herndon, Leesburg, Lorton, 571 McLean, Manassas, Occoquan, Vienna; (571 overlays 703)
- 757 Chesapeake, Chincoteague, Courtland, Great Bridge, Hampton, Newport News, **Norfolk**, **Portsmouth**, Suffolk, **Virginia Beach**, Williamsburg/Jamestown
- 804 Amelia Court House, Ashland, Beaverdam, Bethia, Bowling Green, Callao, Cartersville, Charles City, Chester, Colonial Beach, Cumberland, Dawn, Deltaville, Dinwiddie, Disputanta, Doswell, Enon, Farnham, Fife, Gloucester, Goochland, Gum Tree, Hague, Hanover, Hayes, Heathsville, Hopewell, Irvington, Kilmarnock, King and Queen, King William, Lively, McKenney, Manakin, Mathews, Mechanicsville, Midlothian, Montpelier, Montross, Old Church, **Petersburg**, Port Royal, Powhatan, Providence Forge, Reedville, **Richmond**, Rockville, Sandston, Tappahannock, Varina, Warsaw, Waverly, West Point
- VT 802 (entire state)
- W - **Back to Top**
- WA 206 Bainbridge Isl., Mercer Isl., Newhalem, Sea-Tac Airport, **Seattle**, Vashon Isl.; **(564 overlay of 206, 253, 360, and 425 suspended)**
- 253 Auburn, Federal Way, Gig Harbor, Kent, Puyallup, **Tacoma**; **(564 overlay of 206, 253, 360, and 425 suspended)**
- 360 Aberdeen, **Bellingham**, Bremerton, Camas, Friday Harbor, Lacey, Langley, Longview, Marysville, Mount Vernon, **Olympia**, Orchards, Port Angeles, Port Townsend, Poulsbo, Shelton, Silverdale, **Vancouver**, Olympic NP, Mt. Rainier; **(564 overlay of 206, 253, 360, and 425 suspended)**
- 425 **Bellevue**, Bothell, **Everett**, Issaquah, Kirkland, Lynnwood, Redmond, Renton, Silver Lake, Snoqualmie Pass; **(564 overlay of 206, 253, 360, and 425 suspended)**
- 509 Easton, Ellensburg, Kennewick, Pasco, Pullman, Richland, **Spokane**, Stevenson, Walla Walla, Wenatchee, Winthrop, Yakima
- (564) **(564 overlay of 206, 253, 360, and 425 suspended) (564 was originally announced as an overlay only on 360.)**
- WI 262 Brookfield, Burlington, Delavan, Elm Grove, Hartland, **Kenosha**, Lake Geneva, Menomonee Falls, New Berlin, **Racine**, Thiensville, **Waukesha**, West Bend, Whitewater
- 414 Brown Deer, Fox Point, Franklin, Glendale, Greenfield, **Milwaukee**, Muskego, Oak Creek, Shorewood, Wauwatosa, West Allis, Whitefish Bay
- 608 Alma, Beloit, Janesville, La Crosse, **Madison**, Middleton, Monroe, Montello, Platteville, Portage, Richland Center, Tomah, Westfield
- 715 Black River Falls, Clintonville, Coloma, **Eau Claire**, Elk Mound, Marinette, Rhinelander, Schofield, Stevens Point, Superior, Wausau, Wisconsin Rapids
- 920 Appleton, Berlin, Cedar Grove, Columbus, De Pere, Fond du Lac, Fort Atkinson, **Green Bay**, Jefferson, Manitowoc, Neenah, New London, Oconto, Oneida, Oshkosh, Princeton, Sheboygan,

Sturgeon Bay, Watertown

WV 304 (entire state)

WY 307 (entire state)

[Back to Top](#)**Canada**

Prov.	NPA	Cities
B.C.	250	150 Mile House, Campbell River, Cortes Island, Courtenay, Cranbrook, Ft. St. John, Gold Bridge, Kamloops , Kelowna , Lantzville, Lasqueti Island, Lillooet, Lytton, Manning Park, Merritt, Nanaimo, Penticton, Port Alberni, Prince George, Prince Rupert, Princeton, Shalalth, Vernon, Victoria
	604	Overlay area (604 & 778): Abbotsford, Aldergrove, Bowen Island, Cloverdale, Fort
	778	Langley, Haney, Ladner, Langley, Mission, New Westminster, Newton, North Vancouver, Pitt Meadows, Port Coquitlam, Port Moody, Richmond, Vancouver , West Vancouver, Whalley, White Rock, Whonnock
		Non-overlay area (remains 604 only): Agassiz, Black Point, Boston Bar, Britannia Beach, Chilliwack, D'Arcy, Gibsons, Hemlock Valley, Hope, Pemberton, Pender Harbour, Port Mellon, Powell River, Rosedale, Sardis, Sechelt, Squamish, Vananda, Westview, Whistler, Yale, Yarrow
		(778 is a concentrated overlay on part of 604)
	778	concentrated overlay on Vancouver metro area
Alberta	403	Airdrie, Banff, Calgary , Drumheller, Head-Smashed-In, Lethbridge, Medicine Hat, Ponoka, Red Deer, Stettler, Hwy. 12
	780	Camrose, Edmonton , Edson, Ft. McMurray, Grande Prairie, Jasper, Lloydminster, Slave Lake, Vegreville, Wainwright, Wetaskiwin, Hwy. 13
Sask.	306	Saskatchewan (entire province)
Manitoba	204	Manitoba (entire province)
Ontario	416	Toronto (incl. East York, Etobicoke, North York, Scarborough, York); (647 overlays 416)
	647	
	519	Brantford, Chatham, Galt, Guelph, Hespeler, Kitchener, London , Orangeville, Owen Sound, Sarnia, Stratford, Windsor, Woodstock
	613	Belleville, Brighton, Brockville, Cardiff, Cornwall, Kingston, Marmora, Orleans, Ottawa , Petawawa, Rolphton, Trenton, Whitney
	705	Algonquin Park, Alliston, Barrie, Collingwood, Hastings, Lindsay, Millbrook, North Bay, Orillia, Peterborough, Sault Sainte Marie, Sudbury , Sunderland, Timmins, Warkworth, Wilberforce
	807	Atikokan, Dryden, Ft. Frances, Ft. Severn, Hornepayne, Kenora, Marathon, Nakina, Nipigon, Thunder Bay , White River
	905	Ajax, Ancaster, Beeton, Bradford, Brampton, Burlington, Caledon, Castleton, Cobourg,
	289	Cooksville, Dundas, Ft. Erie, Freelon, Georgetown, Hamilton , Keswick, Malton, Milton, Mississauga , Newmarket, Niagara Falls, Oakville, Oshawa, Port Credit, Port Perry, Richmond Hill, St. Catharines, Selkirk, Streetsville, Thornhill, Unionville, Welland, suburbs of Toronto ; (289 overlays 905)
Québec	418	Alma, Baie-Comeau, Batiscan, Charlesbourg, Chibougamou, Chicoutimi, Fermont, Gaspé, Havre-St.-Pierre, Jonquière, Lévis, Loretteville, Lotbinière, Québec , Rimouski, Rivière-du-Loup, St.-Augustin, St.-Gédéon, St.-Georges, St.-Tite, Schefferville, Sept-Îles, Stratford,

Thetford Mines

- 450 Berthierville, Boucherville, Brossard, Brownsburg, Chateauguay, Chomedey, Eastman, Granby, Joliette, Kahnawake, Lachute, **Laval**, Lawrenceville, Le Gardeur, **Longueuil**, Mansonville, Mirabel, St.-Eustache, St.-Hugues, St.-Hyacinthe, St.-Jean, St.-Jean-de-Matha, St.-Jérôme, St.-Lambert, Ste.-Adèle, Ste.-Catherine, Ste.-Thérèse, Salaberry-de-Valleyfield, Sorel, Terrebonne, Valcourt, Vaudreuil; (450 surrounds, but does not include, **Montréal**)
- 514 Dorval, Île-Bizard, Île des Soeurs, Île-Perrot, Lachine, **Montréal**, Pointe-Claire (438 will overlay 514, postponed to 2005)
- 819 Asbestos, Drummondville, Gatineau, **Hull**, Inukjuak, Ivujivik, Kangiqsualujjuaq, Kangiqsujuaq, **Kuuujuaq** (Ft. Chimo), Kuujuarapik, La Tuque, Lac-Mégantic, Magog, Matagami, Radisson, Rouyn-Noranda, Shawinigan, **Sherbrooke**, **Trois-Rivières**, Val-d'Or, Victoriaville
- N.B. 506 New Brunswick (entire province)
- N.S. 902 Nova Scotia (entire province)
- P.E.I. 902 Prince Edward Island (entire province)
- Nfld. 709 Newfoundland and Labrador (entire province)
- Yukon 867 Yukon Territory (entire territory)
- NWT 867 Northwest Territory (entire territory); Special note: **Inuvik** (403) 979-xxxx numbers are now (867) 777-xxxx
- Nunavut 867 Nunavut (entire territory); Special note: **Iqaluit**/Frobisher Bay (819) 979-xxxx numbers are now (867) 979-xxxx
- 600 Special-purpose Canadian numbers (e.g., caller-pays cellular)

[Back to Top](#)

A B C D E F G H I J K L M N O P Q R S T U V W X Y Z Canada

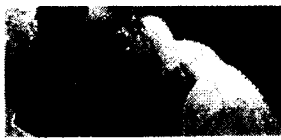
 CLOSE WINDOW

Terms & Conditions | Privacy Policy | Contact Us
 © 2004 AT&T. All rights reserved.



The world's networking company™

att.com | At Home & On the Go | Small & Medium Business | E



Local Calling

Choose Your Language: **ENGLISH** ESPAÑOL 中文 日本語 한국어 РУССКИЙ POLSKI

Home

International Long Distance

VOIP - AT&T CallVantage

Domestic Long Distance

Local

Calling On the Go

Consumer Information

FAQ

Site Map

AT&T LOCAL TOLL CALLING PLAN

For the calls that fall in between long distance and local service, sometimes known as "in state" or "regional" calling, AT&T offers competitive rates, crystal-clear reception, and unbeatable value.

[LEARN MORE](#)

AT&T LOCAL SERVICE CALLS

With one flat rate, AT&T takes care of all your local phone needs, with features such as call waiting and forwarding, three-way calling, and caller ID capability. Not to mention that changing to AT&T doesn't mean changing your phone number.

[SIGN UP NOW](#)

AT&T Unli
Country™ F
Unlimited
roundtrips
to the cou
of your ch

[Learn M](#)


ACCOUNT ACCESS


[View/Pay Bill](#)

DIALING ASSISTANCE

- [Dialing Instructions](#)
- [International Dialing Updates](#)
- [AT&T Direct Access Numbers](#)
- [Country Codes](#)
- [U.S. Area Codes](#)

WEATHER & TIME FINDER

- [International Time Finder](#)

→ International Weather
Finder 

[Terms & Conditions](#) | [Privacy Policy](#) | [Contact Us](#)
© 2004 AT&T. All rights reserved.



The world's networking company™

att.com | At Home & On the Go | Small & Medium Business | E

AT HOME & ON THE GO: PRODUCTS & SERVICES CUSTOMER CENTER ASSISTANCE

CALLING PLANS INTERNET SERVICES BUNDLED SERVICES VOICE OVER IP PHONES & ACCESSORIES

AT&T CallVantage™

Phone service for broadband

AT&T CALLVANTAGE HOME

WHAT IS AT&T CALLVANTAGE

HOW IT WORKS

PLANS & PRICING

SAVINGS CALCULATOR

CHECK SERVICE

AVAILABILITY

REFER A FRIEND

IMPORTANT INFO AND FAQs

CONTACT US

SUBSCRIBER AGREEMENT

TAKE THE TOUR

HOW MUCH CAN YOU SAVE WITH AT&T CALLVANTAGE SERVICE?

Sign up now for unlimited local and long distance calling to save at least \$250 a year¹ while you enjoy great service and exciting features.

1 Calculate Savings


[1 LEARN MORE](#)

[2 LEARN MORE](#)


Or, call to order your VoIP service at **1-866-816-3815, ext. 64528**

Already an AT&T CallVantage customer? [Access your account.](#)

AT&T CallVantage Account Questions? **Call 1-866-596-8464**

AT&T Business VoIP Services [Click here.](#)

NUMBER FO



Save 50% on l

Make calls to
United Kingdom

New Delhi

Philippines

Germany

[See all info](#)



¹Broadband service charges not included. Offer expires 1/31/05. Monthly rate includes direct-dialed domestic calls and calls to Canada. International calls are billed at additional per-minute rates and may have different feature capabilities. A \$29.99 service activation fee applies. Other charges may apply. Customers who disconnect Service must return equipment associated with Service in order to avoid disconnect fee. Minimum system requirements apply, DSL or 2-way cable. Internet access required. Service does not support certain directory services, direct dial calls outside the U.S. and Canada, operator assisted, pay services or third-party billing (except calling card prepaid services). Other restrictions may apply. Service will not function during a power or broadband service outage and is not compatible with home security systems. Service's 911 Emergency Dialing operates differently from traditional 911 Service. To insure correct emergency call routing, the Service Address provided to us MUST correspond to the physical location of your AT&T CallVantageSM Service phone.

²Savings do not include charges for broadband services. As compared to the lead end to end offers of MCI, Sprint, Verizon, SBC, and Bell South as of 9/8/04. Savings result because AT&T CallVantage Service customers pay lower monthly service fees and lower Federal Excise Tax, and do not pay Federal USF and FCC Line Charges. Savings may be higher dependent upon state and carrier.

See the FAQs and subscriber agreement for additional terms and conditions.

³Savings based on weighted average of calling to all countries, compared to the lead plan of AT&T as of 10/1/04. Calls terminating on phones or other wireless devices may be charged additional per-minute rates and are not included in stated savings.

⁴Broadband service charges not included. Monthly fee includes direct-dialed calls within your local calling area. All other calls are billed at additional per-minute rates. A \$29.99 service activation fee applies. Customers who disconnect Service must return equipment associated with Service in order to avoid \$29.99 disconnect fee. If a long distance number or non-local number is used for the Locate Me, 3-Way or Calling Forwarding Features, charges will be applied. Other charges may apply.

[Terms & Conditions](#) | [Privacy Policy](#) | [Contact Us](#)
© 2004 AT&T. All rights reserved.



The world's networking company™

[att.com](#) | [At Home & On the Go](#) | [Small & Medium Business](#) | [Ei](#)[AT HOME & ON THE GO:](#) [PRODUCTS & SERVICES](#) [CUSTOMER CENTER](#) [ASSISTANCE](#)[CALLING PLANS](#) [INTERNET SERVICES](#) [BUNDLED SERVICES](#) [VOICE OVER IP](#) [PHONES & ACCESSORIES](#)

BUNDLED SERVICES

LOCAL & LONG DISTANCE BUNDLES

AT&T CallVantageSM Service Phone Service for Broadband

Get unlimited local and long distance calling in the U.S. and to Canada, great voice quality, and powerful new features through your broadband connection for at least \$250 less than you pay for traditional phone service.

☎ Unlimited Local & Unlimited Long Distance

AT&T One Rate USASM

All of your local and domestic long distance calling over your traditional phone lines for a great rate.

☎ Unlimited Local & Unlimited Domestic Long Distance

INTERNET & HOME PHONE BUNDLES

DSL & Home Phone

Get your DSL Internet connection and traditional home phone service all on one bill while you download speeds of up to 3.0 mbps.*

☎ AT&T DSL Service & Local & Long Distance

AT&T Worldnet[®] Service & Home Phone

Get unlimited Internet and unlimited local and domestic long distance service and take advantage of a great overall value.

☎ Unlimited Dial-Up Internet & Local & Long Distance

[Terms & Conditions](#) | [Privacy Policy](#) | [Contact Us](#)
© 2004 AT&T. All rights reserved.



The world's networking company™

[att.com](#) | [At Home & On the Go](#) | [Small & Medium Business](#) | [Ei](#)
[AT HOME & ON THE GO:](#) [PRODUCTS & SERVICES](#) [CUSTOMER CENTER](#) [ASSISTANCE](#)
[CALLING PLANS](#) [INTERNET SERVICES](#) [BUNDLED SERVICES](#) [VOICE OVER IP](#) [PHONES & ACCESSORIES](#)

CALLING PLANS

→ LOCAL

- Ⓢ Local Service
- Ⓢ Set up new service
- Ⓢ Moving?

AT&T CallVantage
Phone Service for Broadband

\$250



→ LONG DISTANCE

- Ⓢ View all
- Ⓢ Compare plans

AT&T CallVantage
Phone Service for Broadband

UNLIMITED



→ INTERNATIONAL

- Ⓢ View all
- Ⓢ Compare plans

AT&T CallVantage
Phone Service for Broadband

50%



→ CALLING ON THE GO

- Ⓢ Calling Cards
- Ⓢ Calling from abroad
- Ⓢ 1 800 CALL ATT

→ OTHER SERVICES

- Ⓢ Local Toll
- Ⓢ Plans for military personnel
- Ⓢ Services for the hearing impaired
- Ⓢ Alascom for residents of Alaska
- Ⓢ Personal 800 Number

→ BUNDLED SERVICES

- Ⓢ Calling Bundle
- Ⓢ DSL Bundle
- Ⓢ Dial-up Bundle

[Terms & Conditions](#) | [Privacy Policy](#) | [Contact Us](#)
© 2004 AT&T. All rights reserved.



AT HOME & ON THE GO: PRODUCTS & SERVICES CUSTOMER CENTER ASSISTANCE
& BUNDLES CALLING SERVICES INTERNET SERVICES VOICE OVER IP PHONES & ACCESSORIES WIRELESS

AT&T CallVantage™
Phone service for broadband

SERVICE AVAILABILITY

AT&T CALLVANTAGE HOME

WHAT IS AT&T CALLVANTAGE

HOW IT WORKS

PLANS & PRICING

SAVINGS CALCULATOR

CHECK SERVICE

AVAILABILITY

SHOPPING CART

REFER A FRIEND

IMPORTANT INFO AND FAQs

CONTACT US

SUBSCRIBER AGREEMENT

TAKE THE TOUR

AT&T CallVantage Service is available just about everywhere! To find out if it's available in your area, just fill out the form below and select the Check Availability button.

What type of phone number would you like to use for AT&T CallVantage Service?

☒ I want to get a new
phone number from AT&T.

-OR-

☐ I want to keep my
existing phone number.

[Click here to learn more](#)

Select the State and Location you would want for your new AT&T CallVantage Phone Number:

Georgia

Select an Area Code

The number you choose can be outside your residential calling area, even outside of your state of residence. For example, if you live in Florida, your AT&T CallVantage number can have a New York area code. You will be able to use your phone normally, and callers will reach you by dialing your number in New York.

What State do you live in?

Select a State

How do you access the Internet?:

Select an Internet Access Type



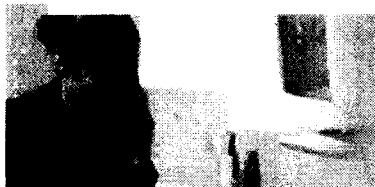
Take a moment to review our [Minimum Service Requirements](#).

[Terms & Conditions](#) | [Privacy Policy](#) | [Contact Us](#)
© 2004 AT&T. All rights reserved.

[AT HOME & ON THE GO:](#) [PRODUCTS & SERVICES](#) [CUSTOMER CENTER](#) [ASSISTANCE](#)[& BUNDLES](#) [CALLING SERVICES](#) [INTERNET SERVICES](#) [VOICE OVER IP](#) [PHONES & ACCESSORIES](#) [WIRELESS](#)**AT&T CallVantage**
Phone service for broadband**SERVICE
AVAILABILITY****AVAILABLE NUMBER**

Your new phone number will
begin with:

678 387-xxxx[View your order](#)[Check another number](#)**AT&T CallVantage Service is available for the phone number you requested!
here to get AT&T CallVantage Service now.**[AT&T CALLVANTAGE HOME](#)[WHAT IS AT&T CALLVANTAGE](#)[HOW IT WORKS](#)[PLANS & PRICING](#)[SAVINGS CALCULATOR](#)[CHECK SERVICE](#)[AVAILABILITY](#)[SHOPPING CART](#)[REFER A FRIEND](#)[IMPORTANT INFO AND FAQs](#)[CONTACT US](#)[SUBSCRIBER AGREEMENT](#)[TAKE THE TOUR](#)[Take a moment to review our Minimum Service Requirements.](#)[Terms & Conditions](#) | [Privacy Policy](#) | [Contact Us](#)
© 2004 AT&T. All rights reserved.

[Products & Services](#)[News](#)[Who We Are](#)[Contact Us](#)[Home](#)

Who We Are

Who We Are

[Corporate Profile](#)[History](#)[Management Team](#)[Board of Directors](#)[Investors](#)

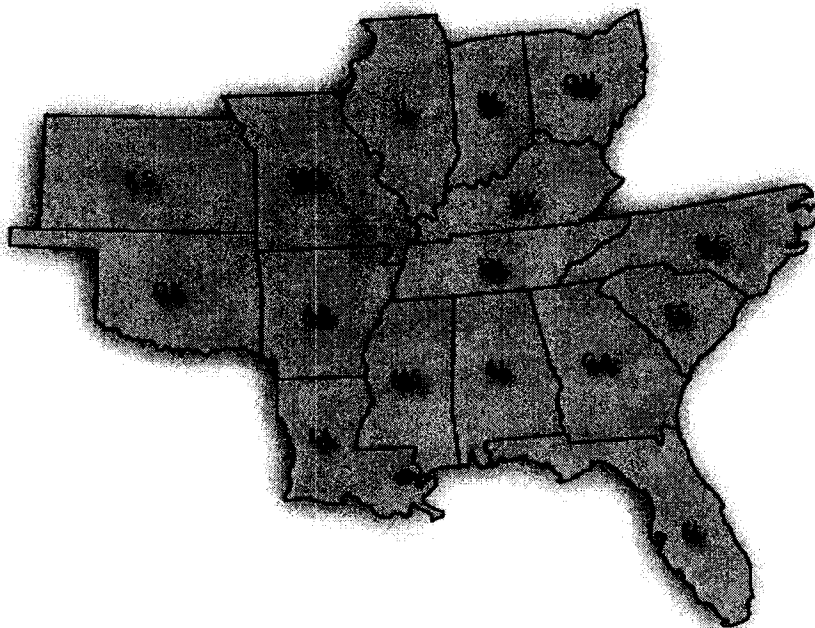
Locations

[ALABAMA](#)[ARKANSAS](#)[FLORIDA](#)[GEORGIA](#)[ILLINOIS](#)[INDIANA](#)[KANSAS](#)[KENTUCKY](#)[LOUISIANA](#)[MISSISSIPPI](#)[MISSOURI](#)[NORTH CAROLINA](#)[OHIO](#)[OKLAHOMA](#)[SOUTH CAROLINA](#)[TENNESSEE](#)[NuVox Network](#)[Customer Testimonials](#)[Dealer Program](#)[Careers](#)

LOCATIONS

Locations

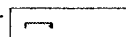
NuVox offers service in 16 states across the Midwest and Southeast. To obtain contact information and service availability, please select the city nearest you from the map below.



[Tariffs](#) | [Privacy Policy](#) | [Acceptable Use Policy](#) | [Contact Us](#) | 800-672-1450

www.broadbandreports.com

Register or



Detail : TriVergent

Try Our Site Search..trivergent **Go!**search words
or ZIP code**Find Service**

- ☐ Find
☐ Prequal
☐ CO Distance
☐ ISP Search
☐ Find CO
☐ T1s++

Reviews

- ☐ Latest
☐ Find nearby
☐ Good Bad..
☐ Verdicts
☐ Your Town

Front Page**FAQs+Info****Forums****Security****Tests+Tools****Buy****Join Club****For ISPs****Search****About us**

Spread Firefox!

 Get Firefox!

 TriVergent

- ☐ 2 user reviews
☐ write your own review online
☐ Forum on »/forum/cover,1503

☐ edit listing**TriVergent**☐ Sales Phone Number: **1-877-874-3758** or Send your query**TriVergent**<http://www.trivergent.com>**Current Coverage:**

Arkansas, Georgia, North Carolina, South Carolina

Featuring:

- ☐ business DSL
☐ Web Hosting
☐ Co-location
☐ Fractional T1s
☐ Voice circuits

Head office:

Greenville Greenville, SC

Network Ops Centers:

SC Greenville Greenville

Partners:
 Trivergent

Warning: the prices this company quote may n
be INCLUSIVE OF UNIVERSAL SERVICE FEE! m
information.

About TriVergent ..

TriVergent offers customers broadband Internet access, Web hosting and design services, and lo and long distance phone service - all from one company, all on one bill. Contact us toll-free at 877.TRIDSL8 for more information.

Recent Reviews

icon key

(viewing 1..10 from 2) - **Next 10 >>**☐ next review in page

Review by: **torkrite** ☐ on Wednesday October 17th 01, @08:43PM.

Note: reviewer registered on 2001-10-17 20:08:39, but has only visited us 5 times

From: **Lexington, Lexington, SC****Business DSL customer**Contract was **\$49 per month (24 months)**From order to *live*: about **30 days**Telco party: **AllTel**

- ☐: **"tech support is very friendly with good helpful attitude"**
☐: **"many tech support technicians simply have NO CLUE!?!?"**

Pre Sales information: **Install Co-ordination:** **Connection reliability:** **Tech Support:** **Services:** **Value for money:**

Insuffici
rec
reviews
relia
ove
rat