




## Advanced Communications Service Areas

[Advanced Communications Service Areas](#)[Advanced Communications Service Areas](#)[Advanced Communications Service Areas](#)

Please select one of the following:

☐ Advanced Communications Service Areas☐ Nationwide Communications Service Areas☐ Softswitch PRI Platform Service Areas




HomeProductsNewsAbout MCICompany ValuesCustomer Service

Search

Small & Medium Bus

Small and Medium Business



Local and Long Distance

- > MCI Business Complete
- > Local and Long Distance with IP
- > MCI Advantage
- > Full Service T1
- > Long Distance
- > Internet
- > All Products
- > Manage My Account
- > Customer Service

### MCI Business Complete

Get **unlimited local and long distance** calling and popular calling features plus **unlimited high-speed Internet** for **one price** from **one company**. Call clients vendors, or anyone in the country for one low monthly price.

[Tell Me More](#)

### Local and Long Distance with IP

MCI local and long distance and high-speed Internet access in one offering.

[Tell Me More](#)

### MCI Advantage


Consolidating local and long distance for multiple business users over a customer's single data network.

[Tell Me More](#)

### Full Service T1

A full service solution for small and medium businesses requiring the flexibility of an integrated communications solution.

[Tell Me More](#)

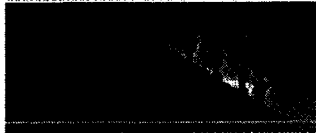


Search

Small & Medium Bus

HomeProductsNewsAbout MCICompany ValuesCustomer Service

Small and Medium Business



- Local and Long Distance
- Long Distance
- Internet
- All Products
- Manage My Account
- Customer Service

## Local and Long Distance

Bundled services designed to meet your company's unique needs.

[MCI Business Complete](#)  
[Local & Long Distance with IP](#)  
[MCI Advantage](#)  
[Full Service T1](#)

## Long Distance

Get competitive in-state and state-to-state rates for all your long distance calls.

[Business Asset](#)  
[Business Premier](#)  
[On-net Voice Services](#)

## Internet

A full range of Internet access products including dial, DSL, dedicated and bundled services to meet the needs of your business.

[MCI Business Complete HiSpeed](#)

[Dial Internet Access](#)  
[Dial Solo](#)  
[Dial Office](#)

[DSL Internet Access](#)  
[DSL Solo](#)  
[DSL Office](#)

[Dedicated Internet Access](#)  
[768k T1](#)  
[T1](#)  
[Dedicated Web Hosting](#)

[Security](#)  
[Firewall](#)

[MAE Services](#)

## Additional Products

Need a more sophisticated solution? Try our Enterprise Products.

**Local**  
[Business Lines](#)  
[Trunks](#)

**Calling Cards**  
[Domestic Card \(with WorldPhone Access\)](#)

**Toll-Free**  
[Domestic](#)  
[International](#)

**Conferencing**  
[Audio](#)

[Video](#)  
[Network](#)

**[Contact Center Services](#)**

[Web Center](#)  
[Voice Portal](#)  
[Enhanced Call Routing](#)

**[View all Enterprise Products](#)**

---

[Privacy Policy](#) • [Legal Notices](#) • [Service Terms & Rates](#) • [Site Map](#)

© 2004, MCI Inc. All



IPO Central

Hoover's Books



**Office is everywhere**  
Come in for office supplies and  
everything else your business needs.

Friday, July 30, 2004

[Home](#)[About Hoover's](#)[Subscription Options](#)[Help](#)

Company Name

[Browse Directories >](#)

## Network Telephone Corp.

40 S. Palafox Pl.  
Pensacola, FL 32501 ([Map](#))

Phone: 850-432-4855  
Fax: 850-470-9641  
Toll Free: 888-432-4855

<http://www.networktelephone.net>

### Browse Company Record

#### Fact Sheet

[People](#) [Products/Operations](#) [Competitors](#) [News](#)[Financials](#)

### Pro Premium Tools

[Family Tree Viewer](#) [Build Company List  
\(D&B In-Depth\)](#)

### Pro Plus Tools

[Report Builder](#) [Build Company List  
\(D&B Basic\)](#) [International Search](#)

### Pro Tools

[Find Similar Companies](#) [Add E-Mail News Alerts](#) [Build Company List  
\(Hoover's In-Depth\)](#) [Build Executive List](#) [Custom News Search](#) [Target IPO Companies](#) [Stock Screener](#)

### Tools

[Profile View](#) [Search For Reports](#) [Download to PDA](#) [Wireless Access](#) [E-Mail This Page](#)

*Covered by David Hamerly*

Network Telephone is a facilities-based provider of advanced integrated telecommunications services, including local and long-distance voice access and broadband Internet, in Alabama, Florida, Georgia, Kentucky, Louisiana, Mississippi, North Carolina, and Tennessee. The company has more than 114,000 lines in service to 13,000 small business customers. Network Telephone also offers Web hosting and Web site development. Chairman Ray Russenberger founded Network Telephone in 1997. Russenberger also founded Network Paging in 1985 and Network USA (now Metrocall) in 1988.

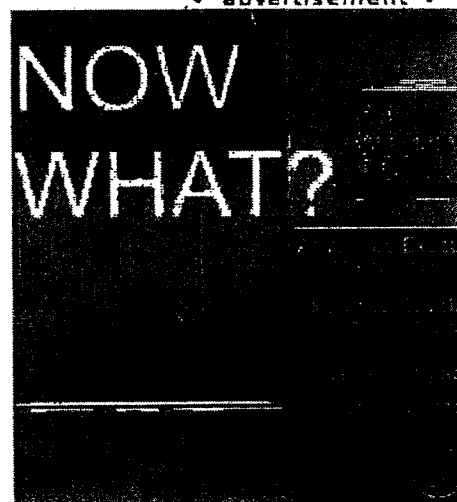
### Key Numbers

|                               |                                  |
|-------------------------------|----------------------------------|
| <b>Company Type</b>           | Private                          |
| <b>D&amp;B D-U-N-S Number</b> | <a href="#">Subscribers Only</a> |
| <b>Fiscal Year-End</b>        | December                         |
| <b>2002 Sales (mil.)</b>      | \$44.9                           |
| <b>1-Year Sales Growth</b>    | 130.3%                           |
| <b>2002 Employees</b>         | 500                              |
| <b>More Financials</b>        |                                  |

### Key People

|                                     |                                  |
|-------------------------------------|----------------------------------|
| <b>Chairman and CEO</b>             | <a href="#">Ray Russenberger</a> |
| <b>President, COO, and Director</b> | <a href="#">Leo J. Cyr</a>       |
| <b>CFO</b>                          | <a href="#">Danyelle Kennedy</a> |
| <b>VP Corporate Services</b>        | <a href="#">Subscribers Only</a> |
| <b>CIO</b>                          | <a href="#">Subscribers Only</a> |
| <b>More People</b>                  |                                  |

advertisement



**Scottrade**

Scottrade: Check  
Ranked Highest  
Satisfaction. Low

**Job Openings**

 [Print This Page](#)

## Industry Information

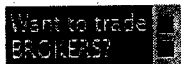
- [Telecommunications Services](#)
  - [Fixed-line Voice Services Providers \(primary\)](#)
    - [Local Exchange Carriers](#)
    - [Long-distance Carriers](#)
  - [Data Services](#)

## Top Competitors

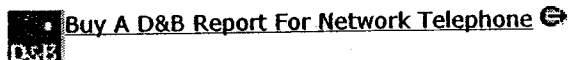
- [ALLTEL](#)
- [BellSouth](#)
- [CenturyTel](#)

## 6 Competitors Listed For Network Telephone

## Trading Toolbox


[Trade Here](#)
[Trade Here](#)

## Related Products From Our Trusted Partners



### Buy Reports and Books

- [Tomorrow's Telephone Technology: The VoIP Revolution](#)  
(Hoover's, Inc., Feb 1, 2004, Business Reports)
- [Data Processing Services Major Companies Report](#)  
(Harris Industry Reports, Aug 12, 2003, Business Reports)
- [Data Services: Financial Analysis Profiles](#)  
(BizMiner, May 24, 2004, Business Reports)
- [Wired Telecommunications Carriers in the US](#)  
(IBISWorld, Jan 18, 2004, Business Reports)
- [Plunkett's Telecommunications Industry Almanac 2003-2004](#)  
(Plunkett Research, Ltd., Jul 15, 2002, Books)
- [Audiotex Update: June 2003](#)  
(Worldwide Videotex, Jun 1, 2003, Business Reports)
- [Beyond the perimeter firewall](#)  
(Datamonitor, Feb 24, 2003, Business Reports)
- [ValuEngine Quantitative Industry Report for TELEPHONE UTILITIES](#)  
(ValuEngine, Inc., Nov 1, 2002, Business Reports)

[More Reports and Books »](#)

## New Hoover's Industry Digests!

Become an industry expert with a Hoover's Industry Digest. A Hoover's Digest combines industry analysis provided by our expert editors with depth coverage of five players in each industry.

[Learn More](#)

## Build Lead Lists

Use Hoover's [Lead Finder](#) to create prospect and contact lists.



**Report Search**

Search

**Additional 3rd Party Libraries**



Indicates subscriber-only content.



Indicates external site content that will open in a new browser window.

**[Hoover's Online](#) | [IPO Central](#) | [Hoover's Books](#)**

**[Subscription Options](#) | [Newsletters](#) | [Hoover's Wireless](#) | [Help](#) | [Feedback](#)**

**Copyright © 2004, Hoover's, Inc., ALL RIGHTS RESERVED**

**[About Hoover's](#) | [Job Opportunities](#) | [Privacy Policy](#) | [Advertising Info](#)**



IPO Central

Hoover's Books



**OUR OFFICE is your office.**  
Come in for office supplies and  
everything else your business needs.

Friday, July 30, 2004

[Home](#)[About Hoover's](#)[Subscription Options](#)[Help](#)Company Name [Browse Directories »](#)**Browse Company Record****Fact Sheet**[People](#)[Products/Operations](#)[Competitors](#)[News](#)[Financials](#)**Pro Premium Tools**[Family Tree Viewer](#)[Build Company List  
\(D&B In-Depth\)](#)**Pro Plus Tools**[Report Builder](#)[Build Company List  
\(D&B Basic\)](#)[International Search](#)**Pro Tools**[Find Similar Companies](#)[Add E-Mail News Alerts](#)[Build Company List  
\(Hoover's In-Depth\)](#)[Build Executive List](#)[Custom News Search](#)[Target IPO Companies](#)[Stock Screener](#)**Tools**[Profile View](#)[Search For Reports](#)[Download to PDA](#)[Wireless Access](#)[E-Mail This Page](#)**Network Telephone Corp.**

40 S. Palafox Pl.  
Pensacola, FL 32501 ([Map](#))

Phone: 850-432-4855  
Fax: 850-470-9641  
Toll Free: 888-432-4855

<http://www.networktelephone.net>*Covered by David Hamerly*

Network Telephone is a facilities-based provider of advanced integrated telecommunications services, including local and long-distance voice access and broadband Internet, in Alabama, Florida, Georgia, Kentucky, Louisiana, Mississippi, North Carolina, and Tennessee. The company has more than 114,000 lines in service to 13,000 small business customers. Network Telephone also offers Web hosting and Web site development. Chairman Ray Russenberger founded Network Telephone in 1997. Russenberger also founded Network Paging in 1985 and Network USA (now Metrocall) in 1988.

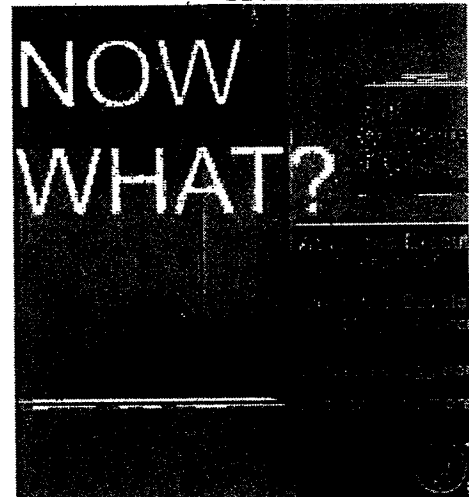
**Key Numbers**

|                               |                                  |
|-------------------------------|----------------------------------|
| <b>Company Type</b>           | Private                          |
| <b>D&amp;B D-U-N-S Number</b> | <a href="#">Subscribers Only</a> |
| <b>Fiscal Year-End</b>        | December                         |
| <b>2002 Sales (mil.)</b>      | \$44.9                           |
| <b>1-Year Sales Growth</b>    | 130.3%                           |
| <b>2002 Employees</b>         | 500                              |
| <b>More Financials</b>        |                                  |

**Key People**

|                                     |                                  |
|-------------------------------------|----------------------------------|
| <b>Chairman and CEO</b>             | <a href="#">Ray Russenberger</a> |
| <b>President, COO, and Director</b> | <a href="#">Leo J. Cyr</a>       |
| <b>CFO</b>                          | <a href="#">Danyelle Kennedy</a> |
| <b>VP Corporate Services</b>        | <a href="#">Subscribers Only</a> |
| <b>CIO</b>                          | <a href="#">Subscribers Only</a> |
| <b>More People</b>                  |                                  |


advertisement

**Scottrade**

Scottrade: Check  
Ranked Highest  
Satisfaction. Low

**Job Openings**



 [Print This Page](#)

## Industry Information

- Telecommunications Services
  - Fixed-line Voice Services Providers (primary)
    - Local Exchange Carriers
    - Long-distance Carriers
  - Data Services

## Top Competitors

- ALLTEL
- BellSouth
- CenturyTel

**6 Competitors Listed For Network Telephone** 



## Trading Toolbox



[Trade Here](#)

[Trade Here](#)

## Related Products From Our Trusted Partners

 [Buy A D&B Report For Network Telephone](#) 

### Buy Reports and Books

- Tomorrow's Telephone Technology: The VoIP Revolution  
(Hoover's, Inc., Feb 1, 2004, Business Reports)
- Data Processing Services Major Companies Report  
(Harris Industry Reports, Aug 12, 2003, Business Reports)
- Data Services: Financial Analysis Profiles  
(BizMiner, May 24, 2004, Business Reports)
- Wired Telecommunications Carriers in the US  
(IBISWorld, Jan 18, 2004, Business Reports)
- Plunkett's Telecommunications Industry Almanac 2003-2004  
(Plunkett Research, Ltd., Jul 15, 2002, Books)
- Audiotex Update: June 2003  
(Worldwide Videotex, Jun 1, 2003, Business Reports)
- Beyond the perimeter firewall  
(Datamonitor, Feb 24, 2003, Business Reports)
- ValuEngine Quantitative Industry Report for TELEPHONE UTILITIES  
(ValuEngine, Inc., Nov 1, 2002, Business Reports)

[More Reports and Books »](#)

## New Hoover's Industry Digests!

Become an industry expert with a Hoover's Industry Digest. A Hoover's Digest combines industry analysis provided by our expert editors with depth coverage of five players in each industry.

[Learn More](#)

## Build Lead Lists

Use Hoover's [Lead Finder](#) to create prospect and contact lists.



**Report Search**

Search

**Additional 3rd Party Libraries**



Indicates subscriber-only content.



Indicates external site content that will open in a new browser window.

**Hoover's Online | IPO Central | Hoover's Books**

**Subscription Options | Newsletters | Hoover's Wireless | Help | Feedback**

**Copyright © 2004, Hoover's, Inc., ALL RIGHTS RESERVED**

**About Hoover's | Job Opportunities | Privacy Policy | Advertising Info**



## ABOUT NETWORK TELEPHONE CORPORATION

[www.networktelephone.net](http://www.networktelephone.net)

### Overview

Headquartered in Pensacola, Fla., Network Telephone Corporation is a facilities-based, second generation, data-centric competitive exchange carrier providing high speed digital subscriber line (DSL), voice over DSL (VoDSL), local and long distance voice, internet and wireless data services throughout a nine-state southeastern US footprint.

Network Telephone secured government certification to provide local and long distance telecommunications exchange in the state of Florida in July 1998. Since then, the company has embraced forefront technology and enhanced product offerings, corporate and client architecture. Network Telephone is currently FCC certified to provide service to Alabama, Florida, Georgia, Kentucky, Louisiana, Mississippi, North Carolina, South Carolina and Tennessee. In addition, more than 300 collocation agreements have been filed with BellSouth, Sprint and GTE and strategic plans include delivery of end-to-end DSL and voice choices to 60+ markets before year-end. Network Telephone concentrates primarily on servicing the small and medium sized business market.

Ray Russenberger founded Network Telephone in 1998, realizing the opportunities that deregulation presented for embracing dynamic technology. Network Telephone immediately began bundling local and long distance voice exchange with data transmission at considerable savings off of incumbent local exchange carrier (ILEC's) rates.

After less than one year in existence, Network Telephone formed a partnership with California-based Copper Mountain Network®™ to deploy their CopperEdge™ DSL concentrators and packet-based integrated access devices, securing delivery of DSL to all of Network Telephone's territories. The move presented full-service telecommunications solutions and advanced technological offerings from one powerhouse source.

Other benchmarks quickly followed. Lucent Technologies feature-rich voice over DSL (VoDSL) Pathstar™ technology joined the Network Telephone product delivery menu. Before year-end 1999, Network Telephone launched its Jackrabbit DSL product, with speeds 50 to 100 times greater than analog dial-up service and a dedicated connection at half the cost of former options, like T1 or ISDN usage-based charges. An aggressive sales team began pre-selling customers to Network Telephone's custom-designed fiber-optic circuitry in Pensacola, Fl. with a scheduled date to move to the network in the first quarter 2000.

In January 2000, Network Telephone successfully launched a new \$8 million, customized SavillExpress CLEC and SavillCare comprehensive customer care back-office infrastructure, automating services and accounting, streamlining customer profiling and management.

Since inception, Network Telephone has assembled a senior management staff representing more than 100 years of telecom experience. To date Network Telephone circuits connect approximately 19,000 lines and 4,000 customers.

[View Jobs for Network Telephone Corporation](#)



# COPPER MOUNTAIN NETWORKS, INC.

[Home](#)
[Contact Us](#)
[Customer](#)
[Partner](#)
[Investor](#)
[Careers](#)
[COMPANY](#)
[PRODUCTS](#)
[SOLUTIONS](#)
[SUPPORT](#)
[LIBRARY](#)
[NEWS](#)


## Press Release

### Contacts:

Keith Higgins  
Copper Mountain Networks, Inc.  
1.650.687.3312  
[khiggins@coppermountain.com](mailto:khiggins@coppermountain.com)

Clare LaGrand  
Network Telephone Corporation  
1.850.432.4855, ext. 1505  
[clarel@networktelephone.net](mailto:clarel@networktelephone.net)

## Network Telephone Extends Reach of Free Powerline DSL™ Broadband Data and Voice Service for Business with T1 Solution from Copper Mountain

**Copper Mountain Helps Southeast U.S. Integrated Communications Provider Deliver Affordable T1-Enabled High-Speed Internet Service Bundles to Business Customers Regardless of Distance from CO**

**PENSACOLA, Fla., July 31, 2001**—Network Telephone, providing facilities-based broadband voice and data telecommunications services to businesses, and Copper Mountain Networks (Nasdaq: CMTN), a provider of copper-based broadband access solutions, today announce that Network Telephone is utilizing T1 Line Cards from Copper Mountain to extend the reach of its affordable, business-class, bundled voice, digital subscriber line (DSL) Internet and Web services in the Southeastern U.S.

Network Telephone is installing Copper Mountain's CopperEdge® T1 Line Cards in Copper Mountain's 200 Digital Subscriber Line (DSL) Concentrators already activated in 175 sites throughout the Southeastern states. The T1 capability of Copper Mountain's CopperEdge concentrators enables Network Telephone to offer concurrent high-speed Internet, multi-line voice services, and site development and hosting applications to business customers located almost anywhere within the central office (CO) serving area. Network Telephone is providing the T1-enabled access to business customers located behind digital loop carriers (DLCs) or beyond the distance that can be reached using SDSL access. Network Telephone's broadband service bundle is priced to include 160 Kbps Internet connection for businesses with five to 24 telephone lines, regardless of distance. This means that Network Telephone uses to reach the customer with the high speed Internet connection.

"Network Telephone has been an industry leader in providing affordable broadband data and voice services over SDSL to small and mid-sized businesses throughout the Southeast U.S.," said Rick Gilbert, president and chief executive officer of Copper Mountain Networks. "Now, with the addition of T1-based DSL access, Network Telephone is leading the way in making its value-added solutions available to customers beyond the reach of traditional SDSL access."

"Access to affordable broadband service is increasingly vital to small and medium-sized business operations," said Network Telephone's chief executive officer and founder Ray Russenbaker.

"With Copper Mountain's T1 Line Card, Network Telephone can extend the DSL bundle to business-ready data and voice services to all interested customers in every metro market it serves. Distance from the CO is no longer an issue for Network Telephone or our prospective customers."

**About the CopperEdge® T1 Line Card**

Copper Mountain's 12-port CopperEdge T1 Line Card is hot-swappable in CopperEdge DSL concentrators, and can be deployed concurrently with Copper Mountain's CopperEdge FDSL, ADSL, G.lite, IDSL, and SDSL Line Cards. The CopperEdge T1 Line Card enables broadband service providers to leverage CopperEdge concentrators' robust Internet Protocol (IP) service intelligence—Copper Mountain's IP IQ™—to deliver cost-effective broadband voice and high-speed data services, even to customers located beyond the reach of conventional SDSL or who are served by Digital Loop Carrier (DLC) equipment. The CopperEdge T1 Line Card is interoperable with Copper Mountain's CopperRocket® 508T Integrated Access Device (IAD) as well as industry-standard T1 customer premise equipment (CPE).

**About Network Telephone Corp.**

Headquartered in Pensacola, Fla., Network Telephone Corp. is a facilities-based broadband Integrated Communications Provider (ICP) using voice over digital subscriber line (VoDSL) technology to deliver local and long-distance, high-speed Internet, Web site hosting, and other site development services to small and medium-size businesses throughout the Southeast. The company employs almost 500 at its headquarters and 20 regional offices. More than 100 lines are in service to date. For more information about Network Telephone, visit the company Web sites, <http://www.networktelephone.net> and <http://www.powerlinedsl.com>.

**About Copper Mountain Networks**

Copper Mountain Networks, Inc. (Nasdaq: CMTN) manufactures intelligent DSL and aggregation equipment for central office, digital loop and multi-tenant unit (MTU) broadband networks worldwide. Its DSL solutions enable carriers and service providers to deliver cost-effective performance data and voice services over existing copper telephone wiring. Its CopperEdge 200 DSL Concentrator is deployed in some of the world's largest public networks, and its environmentally hardened CopperEdge® RT (remote terminal) DSL Concentrator extends the reach of DSL to the millions of customers served by digital loop carriers (DLCs). Copper Mountain's OnPrem™ MTU Concentrator offers a cost-effective and scalable platform for service providers. With IP IQ™, Copper Mountain's robust Internet Protocol (IP) service intelligence, service providers can maximize bandwidth utilization, support value-added broadband services, and scale to meet the demands of hundreds of thousands of subscribers. Copper Mountain's CopperRocket® CPE family and CopperCompatible® program ensure Copper Mountain DSL concentrators are interoperable with the broadest range of customer premise equipment (CPE). Customers wanting more information about Copper Mountain products or office locations worldwide can visit the company's World Wide Web site at <http://www.coppermountain.com>. For investor relations information, contact us at [IR@coppermountain.com](mailto:IR@coppermountain.com).

**Safe Harbor Warning**

Portions of this release contain forward-looking statements regarding future events based on current expectations, and are subject to risks and uncertainties, such as the rate of installation of the Copper Edge® T1 line cards in Network Telephone's CopperEdge® 200 DSL Concentrators. Copper Mountain wishes to caution you that there are some factors that could cause actual results to differ materially from the results indicated by such statements. These factors include, but are not limited to: the ability to expand addressable markets for high-value services like quality and multi-line voice in the broadband industry; quarterly fluctuations in operating results attributable to the timing and amount of orders for our products; our ability to keep pace with rapidly changing product requirements of its customers; market acceptance of our products; concentration of our revenue in a small number of customers; factors and market conditions affecting the telecommunications market, the demand for DSL technologies, the market for service providers, and economic conditions generally which are beyond Copper Mountain's control. We refer you to the documents Copper Mountain files from time to time with the Securities and Exchange Commission, specifically the section titled Risk Factors in our Annual Report on Form 10-K for the year ended December 31, 2000 and other reports and filings.

with the Securities and Exchange Commission.

---

Copper Mountain and all Copper Mountain product names are trademarks of Copper Mountain Net Inc. All other marks are the property of their respective owners.

---

Copyright © 2004, Copper Mountain Networks, Inc. All Rights Reserved.

Legal Information



# COPPER MOUNTAIN NETWORKS, INC.

[SERVICES](#)
[CONTACT US](#)
[CUSTOMER](#)
[PARTNER](#)
[INVESTOR](#)
[CAREERS](#)
[COMPANY](#)
[PRODUCTS](#)
[SOLUTIONS](#)
[SUPPORT](#)
[LIBRARY](#)
[NEWS](#)


## Press Release

### Contacts:

Keith Higgins  
Copper Mountain Networks, Inc.  
1.650.687.3312  
[khiggins@coppermountain.com](mailto:khiggins@coppermountain.com)

Clare LaGrand  
Network Telephone Corporation  
1.850.432.4855, ext. 1505  
[clarel@networktelephone.net](mailto:clarel@networktelephone.net)

### Network Telephone Extends Reach of Free Powerline DSL™ Broadband Data and Voice Service for Business with T1 Solution from Copper Mountain

**Copper Mountain Helps Southeast U.S. Integrated Communications Provider Deliver Affordable T1-Enabled High-Speed Internet Service Bundles to Business Customers Regardless of Distance from CO**

**PENSACOLA, Fla., July 31, 2001**—Network Telephone, providing facilities-based broadband voice and data telecommunications services to businesses, and Copper Mountain Networks (Nasdaq: CMTN), a provider of copper-based broadband access solutions, today announced Network Telephone is utilizing T1 Line Cards from Copper Mountain to extend the reach of its affordable, business-class, bundled voice, digital subscriber line (DSL) Internet and Web services in the Southeastern U.S.

Network Telephone is installing Copper Mountain's CopperEdge® T1 Line Cards in Copper Mountain's 200 Digital Subscriber Line (DSL) Concentrators already activated in 175 sites throughout the Southeastern states. The T1 capability of Copper Mountain's CopperEdge concentrators allows Network Telephone to offer concurrent high-speed Internet, multi-line voice services, and site development and hosting applications to business customers located almost anywhere within the central office (CO) serving area. Network Telephone is providing the T1-enabled access to business customers located behind digital loop carriers (DLCs) or beyond the distance that can be reached using SDSL access. Network Telephone's broadband service bundle is priced to include 160 Kbps Internet connection for businesses with five to 24 telephone lines, regardless of distance. This means that Network Telephone uses to reach the customer with the high speed Internet connection.

"Network Telephone has been an industry leader in providing affordable broadband data and voice services over SDSL to small and mid-sized businesses throughout the Southeast U.S.," said Rick Gilbert, president and chief executive officer of Copper Mountain Networks. "Now, with the addition of T1-based DSL access, Network Telephone is leading the way in making its value-added solutions available to customers beyond the reach of traditional SDSL access."

"Access to affordable broadband service is increasingly vital to small and medium-sized business operations," said Network Telephone's chief executive officer and founder Ray Russenbaker.



"With Copper Mountain's T1 Line Card, Network Telephone can extend the DSL bundle to business-ready data and voice services to all interested customers in every metro market it serves. Distance from the CO is no longer an issue for Network Telephone or our prospective customers."

#### **About the CopperEdge® T1 Line Card**

Copper Mountain's 12-port CopperEdge T1 Line Card is hot-swappable in CopperEdge DSL concentrators, and can be deployed concurrently with Copper Mountain's CopperEdge FTTx, ADSL, G.lite, IDSL, and SDSL Line Cards. The CopperEdge T1 Line Card enables broadband service providers to leverage CopperEdge concentrators' robust Internet Protocol (IP) service intelligence—Copper Mountain's IP IQ™—to deliver cost-effective broadband voice and high-speed data services, even to customers located beyond the reach of conventional SDSL or who are served by Digital Loop Carrier (DLC) equipment. The CopperEdge T1 Line Card is interoperable with Copper Mountain's CopperRocket® 508T Integrated Access Device (IAD) as well as industry-standard T1 customer premise equipment (CPE).

#### **About Network Telephone Corp.**

Headquartered in Pensacola, Fla., Network Telephone Corp. is a facilities-based broadband Integrated Communications Provider (ICP) using voice over digital subscriber line (VoDSL) technology to deliver local and long-distance, high-speed Internet, Web site hosting, and site development services to small and medium-size businesses throughout the Southeast. The company employs almost 500 at its headquarters and 20 regional offices. More than 100 lines are in service to date. For more information about Network Telephone, visit the company Web sites, <http://www.networktelephone.net> and <http://www.powerlinedsl.com>.

#### **About Copper Mountain Networks**

Copper Mountain Networks, Inc. (Nasdaq: CMTN) manufactures intelligent DSL and aggregation equipment for central office, digital loop and multi-tenant unit (MTU) broadband networks worldwide. Its DSL solutions enable carriers and service providers to deliver cost-effective performance data and voice services over existing copper telephone wiring. Its CopperEdge 200 DSL Concentrator is deployed in some of the world's largest public networks, and its environmentally hardened CopperEdge® RT (remote terminal) DSL Concentrator extends the reach of DSL to the millions of customers served by digital loop carriers (DLCs). Copper Mountain's OnPrem™ MTU Concentrator offers a cost-effective and scalable platform for service providers. With IP IQ™, Copper Mountain's robust Internet Protocol (IP) service intelligence, service providers can maximize bandwidth utilization, support value-added broadband services, and scale to meet the demands of hundreds of thousands of subscribers. Copper Mountain's CopperRocket® CPE family and CopperCompatible® program ensure Copper Mountain DSL concentrators are interoperable with the broadest range of customer premise equipment (CPE). Customers wanting more information about Copper Mountain products or office locations worldwide can visit the company's World Wide Web site at <http://www.coppermountain.com>. For investor relations information, contact us at [IR@coppermountain.com](mailto:IR@coppermountain.com).

#### **Safe Harbor Warning**

Portions of this release contain forward-looking statements regarding future events based on current expectations, and are subject to risks and uncertainties, such as the rate of installation of the Copper Edge® T1 line cards in Network Telephone's CopperEdge® 200 DSL Concentrators. Copper Mountain wishes to caution you that there are some factors that could cause actual results to differ materially from the results indicated by such statements. These factors include, but are not limited to: the ability to expand addressable markets for high-value services like quality and multi-line voice in the broadband industry; quarterly fluctuations in operating results attributable to the timing and amount of orders for our products; our ability to keep pace with rapidly changing product requirements of its customers; market acceptance of our products; concentration of our revenue in a small number of customers; factors and market conditions affecting the telecommunications market, the demand for DSL technologies, the market for service providers, and economic conditions generally which are beyond Copper Mountain's control. We refer you to the documents Copper Mountain files from time to time with the Securities and Exchange Commission, specifically the section titled Risk Factors in our Annual Report on Form 10-K for the year ended December 31, 2000 and other reports and filings.

with the Securities and Exchange Commission.

---

Copper Mountain and all Copper Mountain product names are trademarks of Copper Mountain Net Inc. All other marks are the property of their respective owners.

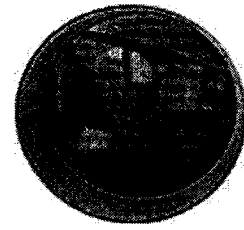
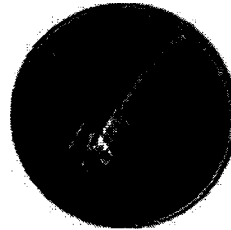
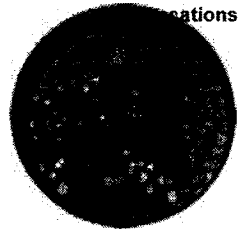
---

Copyright © 2004, Copper Mountain Networks, Inc. All Rights Reserved.

Legal Information



## Our Mission



July 30, 2004

## Product Availability:

NPA - NXX - XXXX

Address

City

State Zip

Submit

## Search for:

Find

**NEW FREE**  
to NewSouth's NewsLINE!Name: Email: 

## Newsletter:



NewSouth NewsLINE

## Delivery Format:

HTML ☐

Subscribe

Manage Subscription

## INTERNET &amp; DATA

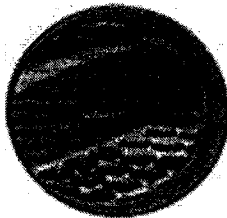
Power up your Internet and data connectivity with High-speed Internet Access from NewSouth!

## VOICE

Is your business looking for a competitive choice for local and long distance phone service?

## BUNDLES

Let NewSouth show you the savings and convenience of communications bundles. Have it all from one provider!



**NEWSOUTH FINALIZES MERGER WITH NU**  
It's official! The I's have been dotted and the T's crossed. NewSouth Communications has completed its merger with Louis-based NuVox Communications. Please click [here](#) for more information on our exciting news.

## PROMOTIONS

For more ways to save at NewSouth, click [here](#)!



Two North Main Street, Greenville, SC 29601 (800-672-1450)

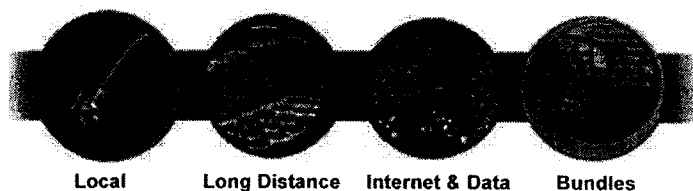
[Tariffs](#) | [Legal Notice](#) | [Acceptable Use Policy](#) | [Terms of Service](#) | [Site Map](#) | [Contact Us](#) | 800-67

Copyright© 2001 NewSouth Communications® All rights reserved.



July 30, 2004

Internet & Data  
Voice  
Bundles  
Telecom Terms  
Promotions



## VOICE

### Local Service

NewSouth Communications' Lucent 5ESS AnyMedia™ digital switches enable us to provide you with the best quality service at the best price.

#### PBX Trunks

NewSouth Communications offers comprehensive service designed to complement your existing PBX or Hybrid Key system.

#### Business Exchange Lines

NewSouth Communications' Business Exchange Lines enable you to customize the features and functionality of your telephone.

#### Extended NewArea

If your business places a large number of calls beyond our expanded local calling area, then Extended NewArea™ is designed for you.

#### Point-to-Point

NewSouth Communications' Point-to-Point functions as a private line between two or more locations. Your business can have continuous access to 4-digit dialing and high-speed data transfer to those locations you call most often.

### Long Distance Service

Whether you're calling across the world or across your state, NewSouth Communications has the right long distance solution for your business.

#### International Long Distance

NewSouth Communications offers international calling to over 240 countries. Unlike other telecommunications providers, NewSouth Communications aggregates your monthly recurring charges.

#### 800 Access

800 service is an easy and convenient way for your customers to contact you...at no charge to them.

#### Account Codes

NewSouth Communications' customers can track local and long distance calls by caller, department or client using our advanced Account Code system.

### Small Business Solutions

Small Business Solutions enables businesses with as few as two lines to enjoy the savings of a competitive telecommunications provider. Your small business will enjoy savings of 15-20% off your current BellSouth services. Finally, small businesses have a choice.

### Voice Mail

NewMessaging™ provides customers a flexible and powerful tool that can answer phone calls, take messages, and store them for review at a later time.

### Conference Calling

Harness the power of the conference call for employees, customers and vendors with NewConferencing™ from NewSouth Communications. This service lets you organize a conference call between three or 300 people quickly and easily.

### Phone Cards

When you are away from the office, our Phone Card puts all the benefits of NewSouth Communications right in your pocket. Calls can be made from almost anywhere to just about everywhere in the world.

### Enhanced Features

Expand your communication capabilities with our suite of advanced voice features. These include an Individualized Dialing Plan, Multi-way Calling, Queuing, and Customer Recovery options.

## INTERNET & DATA

### Managed Network Security

NewSouth Communications is leading the industry with LANLock, a managed Internet security product that brings the latest in small-business network protection to your small business.

### **High-Speed Internet**

NewSouth.net, our high-speed Internet product, brings you the World Wide Web with the touch of a button. Your connection is fast and it's secure - the bandwidth you purchase is guaranteed.

### **Private Networking**

Netosphere, can provide your business with a comprehensive, custom-designed private networking solution for high-speed business communications. With a flexible, cost-effective private network, you will mobilize your business by sharing information and applications between sites.

## **BUNDLES**

### **Suite T**

A T1 made to order for your business. You choose the combination of Internet and voice channels, all with the convenience of one flat rate month after month.

### **Small Business Solutions**

Small Business Solutions enables businesses with as few as two lines to enjoy the savings of a competitive telecommunications provider. Your small business will enjoy savings of 15-20% off your current BellSouth services. Finally, small businesses have a choice.

Have an Account Executive Contact Me.

**Tariffs | Legal Notice | Acceptable Use Policy | Terms of Service | Site Map | Contact Us | 800-67**

**Copyright© 2001 NewSouth Communications® All rights reserved.**



July 30, 2004

## Voice Network Map

Industry Overview  
Data Technology  
Voice Technology  
Information Technology  
**Network Strategy**  
Voice Network Map  
Data Network Map



[Tariffs](#) | [Legal Notice](#) | [Acceptable Use Policy](#) | [Terms of Service](#) | [Site Map](#) | [Contact Us](#) | 800-67

Copyright© 2001 NewSouth Communications® All rights reserved.



Get the information you need...

**Faster!**

Receive a FREE Gift when you order Sprint DSL™ Online.

► [Learn more](#)

[View all Products & Services](#)

[PCS Wireless](#)

[Internet/DSL](#)

[Long Distance](#)

[Local Service](#)

[View all Products & Services](#)

[Solutions by Industry](#)

[Solutions by Business Size](#)

[Outside of the U.S.](#)

[Language/Country](#)

**Manage your Account:**

PCS Wireless

PCS Phone Number:

Password:

[Sign on](#)

[Need help signing on?](#)

Introducing  
the Sprint PCS  
Fair & Flexible™ Plan



► [Details](#)

**Manage your Account:**

PCS Wireless

PCS Phone Number:

Password:

[Sign on](#)

[Need help signing on?](#)

> With  
business is

► [Case study](#)

[Corporate Information and News](#)

[Sprint Reports Second Quarter 2004 Results](#)

[Sprint Blocks 57 Million Spam Emails for G-P](#)

[Sprint, USA Companies Sign Agreement](#)

[Sprint President and COO to Speak at Conference](#)

[Additional Services](#)

[Local Number Portability](#)

[Application Developers](#)

[Careers with Sprint](#)

[Stock Quote:](#)

Symbol Price

**FON** 18.80

quote delayed 20 m

[Investor Relations](#)

[Copyright, Trademark and Disclaimer Notices](#)

[Privacy Policy](#)

[Rates, Terms and Conditions](#)

[Regulatory and Tariffs](#)

[Site Map](#)

© 2004 Sprint. All rights reserved.

[+]  
FEEDBACK


[Sprint.com/Local](#)
[Products & Services](#)
[Customer Support](#)
[My Account](#)


Order Sprint DSL online and get a

**Free \$50 Gift Card.**

[▶ Learn More](#)

#### New Residential Service

Moving to a new home? Just follow the simple step-by-step instructions.

ZIP Code

[Go](#)

#### Sprint Home & On The Go

Enjoy unlimited calling between your PCS and Home Phones. [Click here](#)

**Support & Technical Assistance**  
Have a question or a problem?

#### My Account

Sprint Local residential customers can view and pay online, review call detail, and download Adobe PDF last 18 bills.

**Registered Users:**

[Login](#)

**New Users:**

[Register](#)

#### Products & Services

- ▶ [DSL High Speed Internet](#)
- ▶ [EarthLink Dialup Internet](#)
- ▶ [Money Saving Packages](#)
- ▶ [Calling Features](#)
- ▶ [Long Distance](#)
- ▶ [Home Phones & Equipment](#)
- ▶ [PCS Wireless Phones](#)

#### Customer Service

- ▶ [Questions & Answers](#)
- ▶ [Request a Repair](#)
- ▶ [Vacation Service](#)
- ▶ [Directory Listings](#)
- ▶ [Order Previous Bills](#)
- ▶ [Policies & Forms](#)
- ▶ [Contact Sprint](#)

Copyright © Sprint 2004. All rights reserved.

[Site Map](#) | [Copyright](#) | [Trademark](#) | [Disclaimer](#) | [Privacy Policy](#) | [Tariffs/Price Lists](#)

[+]  
FEEDBACK





One Sprint. Many Solutions.

[Sprint.com](#) | [Personal](#) | [Business](#) | [About Sprint](#)[Sprint.com/Local](#)[Products & Services](#)[Customer Support](#)[My Account](#)

## Other Monthly Charges

Local Co

In addition to the monthly fee for your basic phone line, the following fees and surcharges will appear on your local bill.

### All states:

#### Interstate Access Surcharge- (\$4.00-\$9.20 Varies by state)

This charge covers the cost of connections to the local telephone network, allowing you to make both local and long distance calls. This fee covers the cost of telephone wires, poles and other facilities that connect long distance carriers to local telephone companies. Customers are charged a monthly fee for each telephone line they use.

#### Local Number Portability- (\$0.52 Local Number Portability surcharge will be eliminated during the beginning of February 2004)

Number portability allows you to move almost anywhere within your local calling area and keep the telephone number you have today. You can also keep your telephone number if you switch your local service provider. The local number portability surcharge allows telephone companies like Sprint to recover some of the costs for providing this service. All customers regardless of whether they move their telephone number or not must pay this FCC-approved surcharge.

#### Universal Service Fund- (varies by community)

This surcharge recovers some of the costs Sprint incurs to keep basic telephone service affordable in rural and high cost areas. This fund also makes it possible for telephone companies like Sprint to assist low-income customers that qualify, through lifeline assistance programs. It also provides support for telecommunications services used by schools, libraries and rural health care providers. In some areas, state governments may also require a similar surcharge for special programs within their communities.

### Florida:

#### Touch-tone Service- Touch Tone Service was included in the access line in Florida as of 03/01/2003

Touch-tone service allows you to use Sprint network calling features as well as the interactive customer service features of other companies like banks, airlines, etc. With touch-tone service a phone emits signals or tones (instead of clicks) that automated service systems are able to interpret and process.

#### Hearing Speech Surcharge- (\$.13)

This fee provides funding for telecommunications devices and relay service to be furnished to hearing and speech impaired individuals. The relay service is the service of relaying messages from a hearing impaired customer with a TDD (telecommunications device for the deaf) to someone else who does not have a TDD and/or vice-versa. The surcharge applies to all residential and business phone lines.

### Indiana:

#### Hearing Speech Surcharge- (\$.06)

This fee provides funding for telecommunications devices and relay service to be furnished to hearing and speech impaired individuals. The relay service is the service of relaying messages from a hearing impaired customer with a TDD (telecommunications device for the deaf) to someone else who does not have a TDD and/or vice-versa. The surcharge applies to all residential and business phone lines.

### Kansas:

No additional

**Minnesota:**

No additional

**Missouri:****Extended Local Calling Charge**

This charge reflects the additional cost of expanding your local calling area to include former long distance or local toll destinations. These charges vary by community and apply only in areas where local calling has been expanded.

**Relay Surcharge-(\$.10)**

This fee provides funding for telecommunications devices and relay service to be furnished to hearing and speech impaired individuals. The relay service is the service of relaying messages from a hearing impaired customer with a TDD (telecommunications device for the deaf) to someone else who does not have a TDD and/or vice-versa. The surcharge applies to all residential and business phone lines.

**North Carolina:****Touch-tone Service- Touch Tone is included in the access line in North Carolina**

Touch-tone service allows you to use Sprint network calling features as well as the interactive customer service features of other companies like banks, airlines, etc. With touch-tone service a phone emits signals or tones (instead of clicks) that automated service systems are able to interpret and process.

**Nebraska:****Hearing Speech Surcharge-(\$.07)**

This fee provides funding for telecommunications devices and relay service to be furnished to hearing and speech impaired individuals. The relay service is the service of relaying messages from a hearing impaired customer with a TDD (telecommunications device for the deaf) to someone else who does not have a TDD and/or vice-versa. The surcharge applies to all residential and business phone lines.

**Extended Local Calling Charge**

This charge reflects the additional cost of expanding your local calling area to include former long distance or local toll destinations. These charges vary by community and apply only in areas where local calling has been expanded.

**New Jersey:****Touch-tone Service-(\$.75)**

Touch-tone service allows you to use Sprint network calling features as well as the interactive customer service features of other companies like banks, airlines, etc. With touch-tone service a phone emits signals or tones (instead of clicks) that automated service systems are able to interpret and process.

**Nevada:**

No additional.

**Ohio:****Intrastate Access Fee**

The Intrastate Access Fee was added to customer invoices on July 3, 2001. This fee is simply a more direct method of billing for charges that were formally included in customer long distance charges. Customers have been paying this fee all along, but the charge was included in their long distance rates before July 3, 2001. To help as many customers as we can offset this fee, Sprint eliminated Local Toll and Usage Charges on more than 500 calling routes throughout the state."

**Oregon:****Residential Service Protection Fund-(\$.13)**

This fee provides funding for telecommunications devices and relay service to be furnished to hearing and speech impaired individuals. The relay service is the service of relaying messages from a hearing impaired customer with a TDD (telecommunications device for the deaf) to someone else who does not have a TDD and/or vice-versa. The surcharge applies to all residential and business phone lines.

**Extended Local Calling Charge**

This charge reflects the additional cost of expanding your local calling area to include former long distance or local toll destinations. These charges vary by community and apply only in areas where local calling has been expanded.

**Pennsylvania:**

No additional.

**South Carolina:**

No additional

**Tennessee:****Touch-tone Service-(\$1.00)**

Touch-tone service allows you to use Sprint network calling features as well as the interactive customer service features of other companies like banks, airlines, etc. With touch-tone service a phone emits signals or tones (instead of clicks) that automated service systems are able to interpret and process.

**Texas:****Extended Local Calling Charge**

This charge reflects the additional cost of expanding your local calling area to include former long distance or local toll destinations. These charges vary by community and apply only in areas where local calling has been expanded.

**Virginia:**

No additional.

**Washington:****Extended Local Calling Charge**

This charge reflects the additional cost of expanding your local calling area to include former long distance or local toll destinations. These charges vary by community and apply only in areas where local calling has been expanded.

**Wyoming:****Hearing Speech Surcharge-(\$.10)**

This fee provides funding for telecommunications devices and relay service to be furnished to hearing and speech impaired individuals. The relay service is the service of relaying messages from a hearing impaired customer with a TDD (telecommunications device for the deaf) to someone else who does not have a TDD and/or vice-versa. The surcharge applies to all residential and business phone lines. This charge appears on the bill as "Relay/TAP Surcharge".

Copyright © Sprint 2004. All rights reserved.

[Site Map](#) | [Copyright](#) | [Trademark](#) | [Disclaimer](#) | [Privacy Policy](#) | [Tariffs/Price Lists](#)



[Sprint.com](#) | [Personal](#) | [Business](#) | [About Sprint](#)

[Sprint.com/Local](#)

[Products & Services](#)

[Customer Support](#)

[My Account](#)

## ***Sprint Local***

# ***Welcome to Sprint Local Residential Services!***



### **IS YOUR ENTRY CORRECT?**

You entered the Zip Code below for your new residence.  
If this is correct, please click "continue".

#### **ZIP CODE**

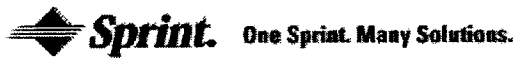
ZIP Code

**Continue**

If incorrect, please re-enter your Zip Code and click "continue".

Copyright © Sprint 2004. All rights reserved.  
[Site Map](#) | [Copyright](#) | [Trademark](#) | [Disclaimer](#) | [Privacy Policy](#) | [Tariffs/Price Lists](#)

[+]  
FEEDBACK

[Sprint.com](#) | [Personal](#) | [Business](#) | [About Sprint](#)[Sprint.com/Local](#)[Products & Services](#)[Customer Support](#)[My Account](#)

Order Sprint DSL online and get a  
**Free \$50 Gift Card.**

[▶ Learn More](#)   

Enter your phone number to check DSL availability.

**New Residential Service**

Moving to a new home? Just follow the simple step-by-step instructions.

ZIP Code

**Sprint Home & On The Go**Enjoy unlimited calling between your PCS and Home Phones. [Click here](#)**Support & Technical Assistance**

Have a question or a problem?

**Products & Services**

- ▶ [DSL High Speed Internet](#)
- ▶ [EarthLink Dialup Internet](#)
- ▶ [Money Saving Packages](#)
- ▶ [Calling Features](#)
- ▶ [Long Distance](#)
- ▶ [Home Phones & Equipment](#)
- ▶ [PCS Wireless Phones](#)

**Customer Service**

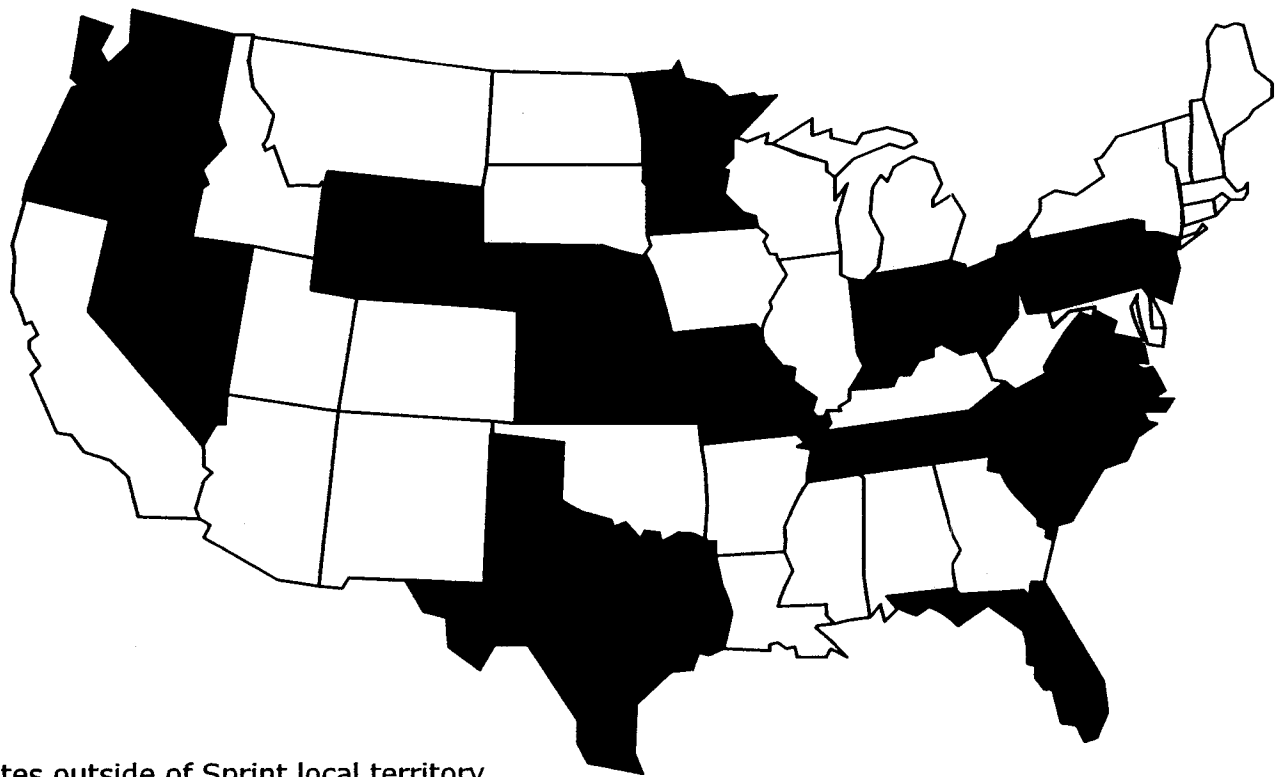
- ▶ [Questions & Answers](#)
- ▶ [Request a Repair](#)
- ▶ [Vacation Service](#)
- ▶ [Directory Listings](#)
- ▶ [Order Previous Bills](#)
- ▶ [Policies & Forms](#)
- ▶ [Contact Sprint](#)

**My Account**Sprint Local residential customers can **view and pay online**, review call detail, and download Adobe PDF last 18 bills.**Registered Users:****New Users:**

Copyright © Sprint 2004. All rights reserved.

[Site Map](#) | [Copyright](#) | [Trademark](#) | [Disclaimer](#) | [Privacy Policy](#) | [Tariffs/Price Lists](#)  
FEEDBACK


## Check For Sprint Local Residential Service



### States outside of Sprint local territory

The diagram shows a square grid of sites. A central site is labeled 'i'. To its right is site 'j', and to its left is site 'i-1'. Above site 'i' is site 'i+', and below it is site 'i-'. The diagram illustrates the spatial arrangement of sites in a 2D lattice.

### States where Sprint provides local telephone service



PRODUCTS & SERVICES

MY ACCOUNT

CUSTOMER SERVICE

ORDER SERVICE

ABC

ENTER YOUR PHONE NUMBER TO SWITCH TO SUPRA ☎ (    ) -    -    

Get local, long distance, and Internet service from one company, with one easy to read bill, and with great prices.

Supra Telecom donates calling cards to needy families for the holidays.



Basic Business Services  
Have a small business and need a connection fast?



Un Solo Pueblo  
Call 10¢ a minute to South & Central America



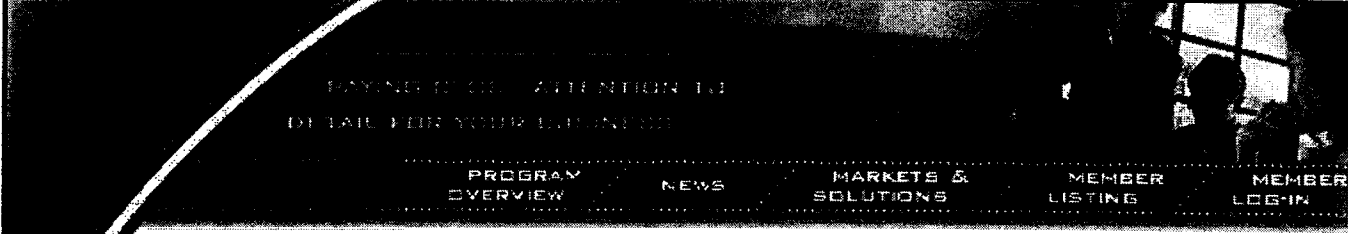
Internet  
Boost the

All rights reserved  
Requirements IE 6.0+,  
Netscape 7.0+ Browser,  
Macromedia Flash 7.0.

Looking for some new **F.R.I.E.N.D.s**

[View previous winners!](#)

[Terms & Conditions](#) | [Privacy Policy](#) | ©2003 Supra Telecom®



PAID ATTENTION TO  
DETAIL FOR YOUR BUSINESS

PROGRAM OVERVIEW NEWS MARKETS & SOLUTIONS MEMBER LISTING MEMBER LOGIN

---

## LARGE BUSINESS SOLUTIONS

---

- Vertical Markets
- Product Solutions
- Home

Our solutions address Large Businesses with more than 500 employees. To see how Time Warner provide a communications solution for this market segment, please read below.

### Analog Services

Time Warner Telecom's Analog Services are provided as part of our Business Switched Services

### Digital Services

Customers receive Digital Services through ISDN PRI and Digital Trunks.

### Supplemental Services

Supplemental Services are additional services available for Time Warner Telecom's switched services to enhance their service.

### Special Switched Services

Special Switched Services provide the capability for Time Warner Telecom customers to expand with little or no equipment investment. Historically referred to as 'foreign exchange' service, these products allow customers to obtain switched service in areas or even other cities without the need for a physical office in those cities.

- Business Expansion Service
- Expanded Exchange Service
- Intercity Switched Service
- Special Switched Services

### Calling Plans

- Long Distance** - The Long Distance product suite is offered in conjunction with other Time Warner Telecom switched products to complete the switched product portfolio. Time Warner Telecom routes distance traffic over their fiber-based regional networks and connects with various Tier 1 Internet carriers' long haul transport.
- Local** - Extended Calling Plans (where available) provide you with expanded outbound calling beyond your local calling area. Our plans are specifically designed to provide you expanded outbound calling at reduced rates, which reduces your long distance expenses.

### SONET

High capacity channels for full duplex, synchronous optical transmission of digital data.

Time Warner Telecom's SONET services are available in both point-to-point and multipoint ring configurations.

### Dedicated Internet Access

Time Warner Telecom's high-performance Internet backbone is designed to provide flexibility, scalability, security, while offering redundancy in the core.

### Co-location Services



Co-location provides reliable and secure space in Time Warner Telecom's data centers to locate back up, remote, or virtual presence and obtain Wide Area Network services from Time Warner Telecom. Cabinets, cages, and/or racks are available depending on the market. We offer this service in 40 states.

### **Dedicated Web Hosting**

Time Warner Telecom can handle large capacity requests when it hosts your web site.

### **Metro Ethernet NLAN**

Time Warner Telecom's Native LAN service connects multiple business locations with a technology already used and understood - Ethernet.

### **Ethernet Internet Access**

EIS provides Internet over Ethernet to customers requiring a scalable Internet solution. This service is sent to customers who co-locate their Internet CPE in Time Warner Telecom's carrier-grade co-location facility (EIS) or delivered to the customer's premise (NLAN EIS).

### **Storage Transport (ESCON/Fibre Channel)**

Using the most current technology, DWDM (Dense Wave Division Multiplexing), Time Warner Telecom can transport your native traffic, without any protocol translation to your secure site miles away. Time Warner Telecom will monitor the link for you, so you may spend your valuable time concentrating on your core business. Multiple paths will ensure that your traffic will get to its destination every time.

### **Wavelength/Lambda**

Time Warner Telecom offers wavelength services that allow one or many direct interfaces to extra capacity point-to-point channels. Each wavelength has a standard capacity of either 2.5 Gbps or 10 Gbps.

### **DS1/DS3**

Dedicated, high capacity, full duplex channel with line speed of 1.544/45 Mbps isochronous serial data.

---

## **Additional Information**

---

### **Business Switched Services ☎**

Time Warner Telecom offers business customers a "real" choice for local telephone service.

### **Co-Location Service ☎**

Time Warner Telecom's Co-location Service supports your expanding network needs with a secure environment and dedicated space for your equipment and storage of your information.

### **Dedicated High Capacity Services ☎**

Time Warner Telecom's Dedicated High Capacity Services offer a complete range of transmission services from 1.5 Mbps to 10 Gbps.

### **Dedicated Internet ☎**

Our Dedicated Internet Access Products deliver high-speed, dedicated connections that ensure a dedicated Internet bandwidth needed for critical data.

### **Digital Trunks ☎**

Time Warner Telecom's digital facilities provide access to the Public Switched Telephone Network through state-of-the-art switches that will serve your business needs today and tomorrow.

### **ISDN PRI ☎**

Time Warner Telecom's Integrated Services Digital Network Primary Rate Interface (ISDN PRI) provides access to the Public Switched Telephone Network through reliable state-of-the-art switches.