

ACCESS SERVICE

RATES, RULES AND CHARGES

Title Page and Pages 1 to 21-30, inclusive of this tariff are effective as of the date shown. Original and revised pages as named below and Supplement No. 4 contains all changes from the original tariff that are in effect on the date hereof.

CHECK SHEET

<u>Page</u>	<u>Number of Revision Except as Indicated</u>	<u>Page</u>	<u>Number of Revision Except as Indicated</u>
Title	Original	27	Original
1	53rd*	28	Original
1.1	7th	29	Original
1.2	27th	30	1st
1.2.1	Original	1-1	Original
1.3	1st	1-2	Original
1.4	6th	2-1	1st
1.5	22nd*	2-2	Original
1.5.1	2nd	2-3	Original
1.6	6th	2-4	Original
1.7	3rd	2-5	Original
1.7.1	1st	2-6	Original
1.8	8th*	2-7	Original
1.9	9th*	2-8	Original
2	Original	2-9	Original
3	Original	2-10	Original
4	Original	2-11	Original
5	Original	2-12	Original
6	Original	2-13	Original
7	Original	2-14	2nd
8	Original	2-15	2nd
9	Original	2-15.1	1st
10	Original	2-16	Original
11	Original	2-17	1st
12	Original	2-18	Original
13	Original	2-19	Original
14	Original	2-20	Original
15	Original	2-21	Original
16	Original	2-22	Original
17	1st	2-23	Original
18	Original	2-24	Original
19	Original	2-25	Original
20	Original	2-26	Original
21	Original	2-27	Original
22	2nd	2-28	Original
22.1	Original	2-29	Original
23	Original	2-30	Original
24	Original		
25	1st		
26	Original		

* New or Revised

(This page filed under Transmittal No. 52)

Issued: October 9, 2003

Effective: October 24, 2003

David A. Cole
President, Industry Markets
Nevada Bell Telephone Company
One SBC Plaza, Dallas, Texas 75202

ACCESS SERVICE
RATES, RULES AND CHARGES
CHECK SHEET (Cont'd)

<u>Page</u>	<u>Number of Revision Except as Indicated</u>	<u>Page</u>	<u>Number of Revision Except as Indicated</u>
7-26	Original	7-78	1st
7-27	2nd	7-78.1	Original
7-28	1st	7-79	2nd
7-29	Original	7-80	2nd
7-30	Original	7-81	Original
7-31	Original	7-81.1	2nd
7-32	Original	7-81.2	2nd
7-33	Original	7-81.3	2nd
7-34	1st	7-81.4	2nd
7-35	Original	7-81.5	2nd
7-36	Original	7-81.6	2nd
7-37	Original	7-81.7	2nd
7-38	Original	7-81.8	Original
7-39	1st	7-82	12th
7-40	Original	7-83	5th
7-41	Original	7-84	10th
7-42	Original	7-84.1	2nd
7-43	Original	7-85	Original
7-44	Original	7-86	1st*
7-45	Original	7-87	1st*
7-46	Original	7-87.1	Original*
7-47	Original	7-87.2	Original*
7-48	Original	7-87.3	Original*
7-49	Original	7-87.4	Original
7-50	Original	7-88	Original
7-51	Original	7-89	Original
7-52	Original	7-90	Original
7-53	Original	7-91	Original
7-54	Original	7-91.1	Original*
7-55	Original	7-91.2	Original*
7-56	7th	7-92	Original
7-57	Original	7-93	Original*
7-58	1st	8-1	1st
7-59	Original	8-2	2nd
7-60	Original	8-3	Original
7-61	Original	8-4	Original
7-62	3rd	8-5	Original
7-63	1st	8-6	Original
7-64	1st	8-7	Original
7-65	Original	8-8	Original
7-66	Original	8-9	Original
7-67	Original	8-10	Original
7-68	Original	8-11	Original
7-69	Original	8-12	Original
7-70	Original	8-13	Original
7-71	Original	8-14	Original
7-72	Original	8-15	Original
7-73	6th	8-16	Original
7-74	Original	8-17	Original
7-75	1st	8-18	Original
7-76	Original		
7-77	Original		

*New or Revised

(This page filed under Transmittal No. 52)

Issued: October 9, 2003

Effective: October 24, 2003

David A. Cole
President, Industry Markets
Nevada Bell Telephone Company
One SBC Plaza, Dallas, Texas 75202

ACCESS SERVICE

RATES, RULES AND CHARGES

CHECK SHEET (Cont'd)

<u>Page</u>	<u>Number of Revision Except as Indicated</u>	<u>Page</u>	<u>Number of Revision Except as Indicated</u>
18-36	Original	20-9	2nd
18-37	Original	20-10	1st
18-38	Original	20-11	1st
18-39	Original	20-12	1st
18-40	Original	20-13	1st
18-41	Original	20-14	1st
18-42	Original	20-15	1st
18-43	Original	20-16	1st
18-44	Original	20-17	1st
18-45	Original	20-18	1st
18-46	Original	20-19	1st
18-47	Original	20-20	1st
18-48	Original	20-21	1st
18-49	Original	20-22	1st
18-50	Original	20-23	1st
18-51	Original	20-24	1st
18-52	Original	20-25	1st
18-53	3rd*	20-26	1st
18-54	Original	20-27	1st
18-55	Original	20-28	1st
18-56	Original	20-29	1st
19-1	Original	20-30	1st
19-2	Original	20-31	1st
19-3	Original	20-32	1st
19-4	Original	20-33	2nd
19-5	Original	20-34	3rd
19-6	Original	20-35	3rd
19-7	Original	20-36	2nd
19-8	Original	20-37	1st
19-9	Original	20-38	2nd
19-10	Original	20-39	1st
19-11	Original	20-40	3rd
19-12	Original	20-41	1st
19-13	1st	20-42	1st
20-1	1st	20-43	1st
20-2	1st	20-44	1st
20-3	1st	20-45	1st
20-4	1st	20-46	1st
20-5	2nd	20-47	2nd
20-6	2nd		
20-7	1st		
20-8	2nd		

*New or Revised

(This page filed under Transmittal No. 52)

Issued: October 9, 2003

Effective: October 24, 2003

David A. Cole
President, Industry Markets
Nevada Bell Telephone Company
One SBC Plaza, Dallas, Texas 75202

ACCESS SERVICE

RATES, RULES AND CHARGES

CHECK SHEET (Cont'd)

<u>Page</u>	<u>Number of Revision Except as Indicated</u>	<u>Page</u>	<u>Number of Revision Except as Indicated</u>
21-1	1st	22-11	Original
21-2	2nd	22-12	Original
21-3	1st	22-13	Original
21-4	Original	22-14	Original
21-4.1	Original	22-15	Original
21-4.2	Original	22-16	1st
21-5	2nd	22-17	1st
21-6	1st	22-18	Original
21-7	2nd	22-19	1st*
21-8	1st	22-19.1	Original*
21-9	1st	22-20	Original
21-10	2nd	22-21	Original
21-11	1st	22-22	Original
21-12	1st	22-23	Original
21-13	1st	22-24	Original
21-14	3rd	22-25	Original
21-15	2nd	22-26	Original
21-16	2nd	22-27	Original
21-16.1	Original	22-28	Original
21-17	1st	22-29	Original
21-18	Original	22-30	Original
21-19	2nd	22-31	Original
21-20	3rd	22-32	Original
21-21	2nd	22-33	Original
21-22	Original	22-34	Original
21-23	Original	22-35	Original
21-24	2nd	22-36	Original
21-25	Original	22-37	Original
21-26	Original	22-38	Original
21-27	2nd	22-39	Original
21-28	Original	22-40	Original
21-29	1st	22-41	Original
21-29.1	Original	22-42	Original
21-29.2	1st	22-43	1st
21-30	1st	22-44	1st
22-1	Original	22-45	Original
22-2	Original		
22-3	Original		
22-4	Original		
22-5	Original		
22-6	Original		
22-7	Original		
22-8	Original		
22-9	Original		
22-10	Original		

*New or Revised

(This page filed under Transmittal No. 52)

Issued: October 9, 2003

Effective: October 24, 2003

David A. Cole
President, Industry Markets
Nevada Bell Telephone Company
One SBC Plaza, Dallas, Texas 75202

ACCESS SERVICE

7. Special Access Service (Cont'd)7.13 Gigabit Ethernet Metropolitan Area Network (GigaMAN®) (Cont'd) (T)7.13.1 Basic Channel Description

GigaMAN® is a fiber based, point-to-point, gigabit Ethernet service that allows customers to transport data signals between local area networks (LANs). GigaMAN® transports data signals at the rate of 1 gigabit per second (Gbps). All basic service configurations provide a single direction of transmission. (T)

(D)
(D)
(D)
(D)
(D)

The following regulations will apply to GigaMAN®: (T)

(A) This service is available to customers in those LATAs served by and within the service territories of Nevada Bell Telephone Company (NBTC) only.

(B) If existing facilities do not exist Special Construction will apply.

(D)
(D)
(D)
(D)

(C) The Telephone Company considers a service interrupted when it becomes unusable to the customer because of a failure of a facility component used to furnish service under this tariff in the event that the protective controls applied by the Telephone Company result in the complete loss of service by the customer. An interruption period starts when a customer reports an inoperative service to the Telephone Company and the Telephone Company confirms that continuity has been lost, and ends when the service is operative. (T)

(T)
(T)
(T)

(This page filed under Transmittal No. 52)

Issued: October 9, 2003

Effective: October 24, 2003

One SBC Plaza, Dallas, Texas 75202

ACCESS SERVICE

7. Special Access Service (Cont'd)7.13 Gigabit Ethernet Metropolitan Area Network (GigaMAN®) (T)
(Cont'd)7.13.1 Basic Channel Description (Cont'd)

(D) Service Provisioning (T)

(1) The customer provided equipment(CPE) must deliver the data signals for GigaMAN® transport for the subscribed data service. (T)

(2) GigaMAN® provides physical layer transport only. The Telephone Company assumes no responsibility for the through transmission of signals generated by the CPE, for the signals by the CPE, or address signaling to the extent the CPE performs addressing. Error detection and correction of data generated by the CPE is the customer's responsibility. (T)

7.13.2 Channel Configuration

There are six (6) basic rate elements, which apply to GigaMAN® service: (C)

(A) Local Distribution Channel (LDC)

Local Distribution Channel (same as Channel Termination) is the termination of GigaMAN® at a customer designated premise, as described in 7.1.2 (A). Consisting of the following six elements: (T)

(a) the termination for the fiber optic facilities at each node and its serving wire center. (C)

(b) the fiber optic facility between each node and its serving wire center. (T)

(B) Interoffice Mileage

Interoffice Transport facilities, which provide the transmission path between Serving Wire Centers associated with two customer designated premises, are comprised of Fixed and Per Mile rate elements.

(This page filed under Transmittal No. 52)

Issued: October 9, 2003

Effective: October 24, 2003

One SBC Plaza, Dallas, Texas 75202

ACCESS SERVICE

7. Special Access Service (Cont'd)

(N)

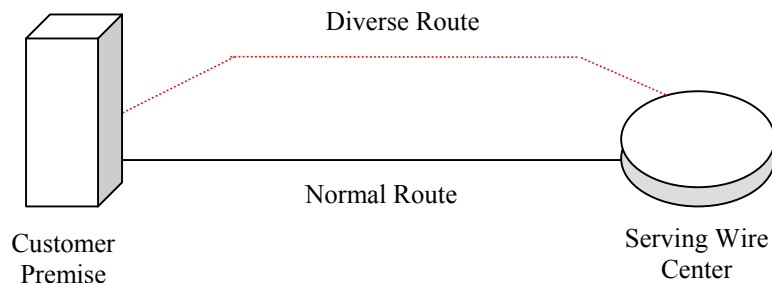
7.13 Gigabit Ethernet Metropolitan Area Network (GigaMAN®)
(Cont'd)7.13.2 Channel Configuration (Cont'd)

(C) Repeater

Repeaters (Circuit Regenerators) provide essential detection and retransmission of GigaMAN® signals. Repeaters will only be provided as required by the Telephone Company when actual fiber facility distance between customer designed premises and/or central office locations exceed design limits. Repeaters will be located exclusively in Telephone Company central offices.

(D) Local Channel Diversity

Local Channel Diversity provides for a transmission path between a designated customer premises and the standard service wire center (SWC) that is diverse from the normal/standard transmission path. With this arrangement, one or more local distribution channels will be provisioned over the standard route and one or more local distribution channels will be provisioned over the diverse route. Local Channel Diversity does not provide for all diversity, it only allows for diversity from the splice point closest to the customer's property line to the SWC. If a customer desires full diversity, arrangements must be made for constructing dual entrance facilities into the customer's premise, at the customer's expense.



(N)

(This page filed under Transmittal No. 52)

Issued: October 9, 2003

Effective: October 24, 2003

One SBC Plaza, Dallas, Texas 75202

ACCESS SERVICE

7. Special Access Service (Cont'd)

(N)

7.13 Gigabit Ethernet Metropolitan Area Network (GigaMAN®)
(Cont'd)7.13.2 Channel Configuration (Cont'd)

(E) Inter-Wire Center (IWC) Diversity

Inter-Wire Center (IWC) Diversity arrangements presume that each end of a GigaMAN® local distribution channel is serviced out of a different serving wire center (SWC). This arrangement provides a transmission path for GigaMAN® local distribution channels between the customer's designated SWC and the SWC at the distant end of the circuit over a transmission path that is separate from the standard transmission path between the two wire centers. IWC diversity does not provide for full diversity. It only offers interoffice diversity. If a customer desires full diversity, Alternate Wire Center Diversity must be implemented along with IWC Diversity. Additionally, arrangements must be made for constructing dual entrance facilities at the customer's premises, at the customer's expense.

(N)

(This page filed under Transmittal No. 52)

Issued: October 9, 2003

Effective: October 24, 2003

One SBC Plaza, Dallas, Texas 75202

ACCESS SERVICE

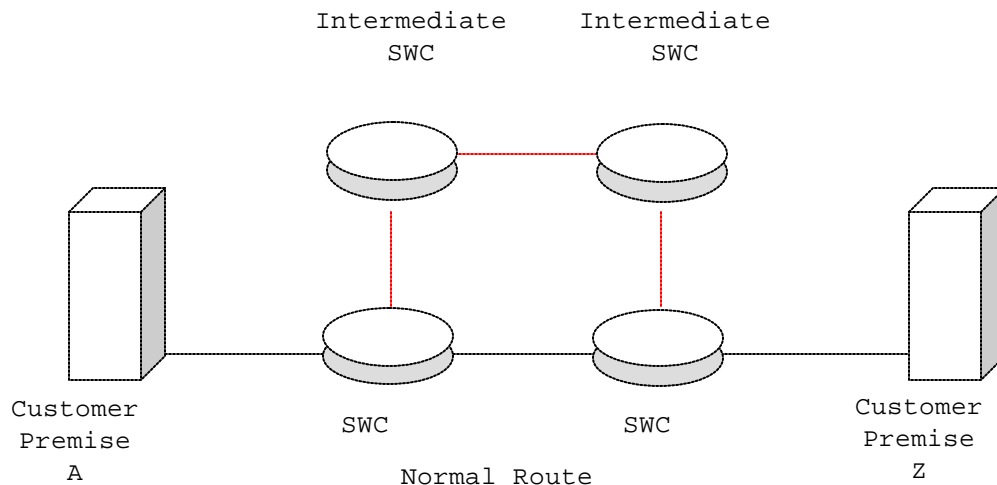
7. Special Access Service (Cont'd)7.13 Gigabit Ethernet Metropolitan Area Network (GigaMAN®)
(Cont'd)7.13.2 Channel Configuration (Cont'd)

(E) Inter-Wire Center (IWC) Diversity (Cont'd)

(1) Inter-Wire Center (IWC) Diversity Mileage
Measurement

The mileage to be used to determine the monthly Channel Mileage rate for an Access Service provided with the IWC Diversity arrangement will be the same as the mileage measured for the Access Service for which the IWC Diversity is provided. Mileage is calculated on the airline distance between the locations involved, i.e., the serving wire centers associated with two customer designated premises, the serving wire center associated with a customer designated premises and an international boundary point, a serving wire center associated with a customer designated premises and a Telephone Company Hub, a serving wire center associated with a customer designated premises and a WATS serving office. The serving wire center associated with a customer designated premises is the serving wire center from which the customer designated premises would normally obtain dial tone unless Alternate Wire Center Diversity is also provided.

Alternate Route



(This page filed under Transmittal No. 52)

Issued: October 9, 2003

Effective: October 24, 2003

ACCESS SERVICE

7. Special Access Service (Cont'd)

(N)

7.13 Gigabit Ethernet Metropolitan Area Network (GigaMAN®)
(Cont'd)7.13.2 Channel Configuration (Cont'd)

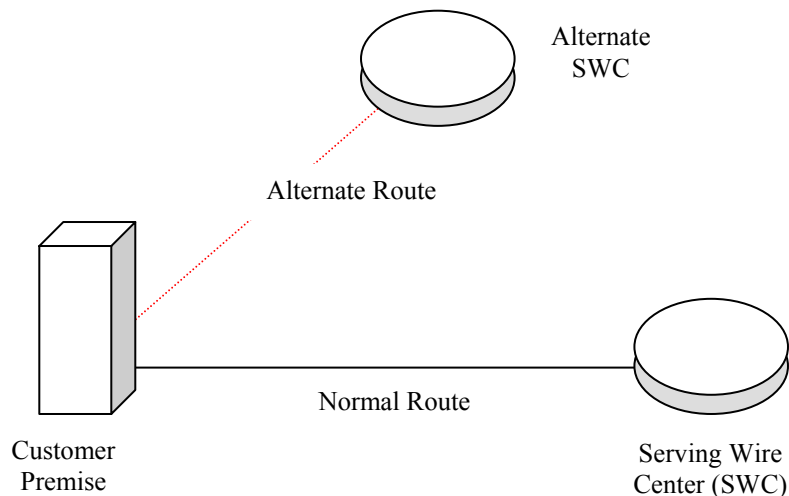
(E) Inter-Wire Center (IWC) Diversity (Cont'd)

(2) Inter-Wire Center (IWC) Diversity Mileage
Measurement When Going To An Alternate Wire Center

Mileage measurements for Access Services provisioned via an Alternate Wire Center Diversity, and for which mileage charges apply, will be based on the special routing; i.e., mileage measurements will be made to alternate wire center rather than the serving wire center from which the customer designated premises would normally obtain dial tone.

(F) Alternate Wire Center Diversity

Alternate Wire Center Diversity is for the local loop only. It provides a local channel transmission path for GigaMAN® service between the customer's designated premises and a wire center that is not the normal (or standard) service wire center. The Telephone Company will choose the alternate wire center closest to the customer's designated premises that is capable of providing GigaMAN® service over the alternate route. If a customer desires full diversity, arrangements must be made for constructing dual entrance facilities into the customer's premises, at the customer's expense.



(N)

(This page filed under Transmittal No. 52)

Issued: October 9, 2003

Effective: October 24, 2003

One SBC Plaza, Dallas, Texas 75202

ACCESS SERVICE

7. Special Access Service (Cont'd)

(N)

7.13 Gigabit Ethernet Metropolitan Area Network (GigaMAN®)
(Cont'd)7.13.11 GigaMAN® Enhancements Limitations

Effective October 24, 2003, and concurrent with the removal of the 31 mile (29dB loss) limitation, new subscriptions to GigaMAN® service will be served by different equipment than the equipment used for subscribers who placed orders that were completed prior to October 24, 2003.

Customers subscribing to GigaMAN® service prior to October 24, 2003 will remain on their current equipment unless, as a result of a Telephone Company change in the service the Telephone Company deems it necessary to modify the customers existing service requiring new equipment.

Diversity Options are not available to customers served by the pre-October 24, 2003 equipment. A customer request to change to the post-October 24, 2003 equipment introduction will be treated as a disconnect of the service requiring the customer to place a new order for GigaMAN® service, and termination liability will be applicable for the customer's disconnected service.

Customers with less than 18 months of existing GigaMAN® service will not be eligible to have termination liability waived. Customers subscribing to GigaMAN® service prior to October 24, 2003, may request a change to the new equipment for the purpose of ordering Diversity Options without incurring the early termination liability charges for their existing GigaMAN® service, providing the following criteria are met, contingent upon the availability of fiber from premises to premises.

- The customer subscribes to a new Term Pricing Plan period that is greater than the remaining months in the existing term Payment Plan;
- Nonrecurring charges will apply where applicable;

(N)

(This page is filed under Transmittal No. 52)

Issued: October 9, 2003

Effective: October 24, 2003

One SBC Plaza, Dallas, Texas 75202

ACCESS SERVICE

7. Special Access Service (Cont'd)

(N)

7.13 Gigabit Ethernet Metropolitan Area Network (GigaMAN®)
(Cont'd)7.13.11 GigaMAN® Enhancements Limitations (Cont'd)

- The new service is provided between the same customer locations requiring a disconnect of the existing GigaMAN® service and placement of an order for the new GigaMAN® service for the same customer of record as the disconnected service;
- Spare facilities and equipment must be available or Special Construction charges shall apply.

The monthly rates for the new service(s) shall be those rates in effect at the time the new service(s) is being installed requiring a disconnect of the existing GigaMAN® service and placement of an order for new GigaMAN® service.

Effective for the period October 24, 2003 through October 24, 2006, customers served by the equipment available prior to October 24, 2003 may renew an expired Term Plan with a new Term Plan not to exceed three (3) years and may remain on the existing GigaMAN® equipment provided that no changes to the existing service are made at the time of ordering and the existing location of the service does not change. If however, during the new three year Term Plan the customer orders any optional features requiring the new equipment that became available after October 24, 2003, the rules set forth under Enhancement Limitations for changing are applicable.

For the period October 24, 2003 through October 24, 2006, requests for renewal to a five (5) year Term Plan will require customers to order a new GigaMAN® service that is on the new equipment that was made available effective October 24, 2003, and an order for new service must be placed for the desired five year Term Plan. Concurrent with installation of the new five 5 Year Term plan for GigaMAN® service, the customer's expired Term Plan GigaMAN® service will be disconnected. All nonrecurring charges will apply for the new service. Spare facilities and equipment must be available or Special Construction charges, as set forth in Section 15, following, shall apply.

(N)

(This page is filed under Transmittal No. 52)

Issued: October 9, 2003

Effective: October 24, 2003

ACCESS SERVICE

7. Special Access Service (Cont'd)7.13. Gigabit Ethernet Metropolitan Area Network (GigaMAN®) (Cont'd) (T)7.13.12 Rates and Charges General Description(A) Recurring Charges

	USOC	Monthly Extension	Term Pricing Plan			NRC	(T)
			12 Mo.	36 Mo.	60 Mo.		
(1) Local Distribution Channel							
- Per Point of Termination Terminating Bit Rate 1 Gbps							
- All States	TMECS	\$3,800.00	\$3,300.00	\$2,850.00	\$2,500.00		
(2) Interoffice Transport Mileage							
- Fixed							
- All States	1L5XX	\$250.00	\$250.00	\$200.00	\$100.00		
- Per Mile 1 Gbps							
- All States	1L5XX	\$125.00	\$125.00	\$100.00	\$75.00		
(3) Repeater	VU4	\$2,500.00	\$2,400.00	\$1,150.00	\$850.00		
(4) Diversity Options							
Local Channel Diversity							
-Per Channel Terminating Bit Rate 1 Gbps							
-All States	CPALX	\$750.00	\$750.00	\$750.00	\$750.00	0.00	
Inter Wire Center Diversity							
-Per Channel Terminating Bit Rate 1 Gbps							
-All States	CPATX	\$500.00	\$500.00	\$500.00	\$500.00	0.00	
Alternate Wire Center Diversity							
-Per Channel Termination bit Rat 1 Gbps							
-All States	CPAAX	\$1,200.00	\$1,200.00	\$1,200.00	\$1,200.00	0.00	

Certain material previously appearing on this page now appears on Original Page 7-93.

(This page filed under Transmittal No. 52)

Issued: October 9, 2003

Effective: October 24, 2003

One SBC Plaza, Dallas, Texas 75202

ACCESS SERVICE

7. Special Access Service (Cont'd)

(N)

7.13 Gigabit Ethernet Metropolitan Area Network (GigaMAN®)
(Cont'd)7.13.12 Rates and Charges General Description (Cont'd)

(N)

(B) Installation and Rearrangement Charges

(M)

All States

	USOC	12 Months	36 Months	60 Months
(1) Administrative Charge per Order	ORCMX	\$60.00	\$60.00	\$60.00
(2) Design Central Office Connection Charge per circuit	NRMCK	N/A	N/A	N/A
(3) Customer Connection Charge per termination	NRBBL	\$1,500.00	\$1,500.00	\$1,500.00

(M)

Certain material appearing on this page previously appeared on Original Page 7-92.

(This page filed under Transmittal No. 52)

Issued: October 9, 2003

Effective: October 24, 2003

One SBC Plaza, Dallas, Texas 75202

ACCESS SERVICE

18. Expanded Interconnection Service (Cont'd)18.8 Rate Regulations (Cont'd)18.8.2 Rates and Charges (Cont'd)

	<u>USOC</u>	<u>Monthly Rate</u>	<u>Nonrecurring Charge</u>	
<u>Cable and Innerduct Pull & Cable Splice,</u> per hour				
Engineer			\$ 80.00	
Technician			80.00	
<u>Conduit</u>				
per Foot		\$1.11	0.00	
<u>EIS Channel Termination (EISCT) Special Access</u>				
DS1	CCDS1	9.06	231.46	
DS3	CCDS3	35.62	202.36	
OC3/3c	CCCJX	470.00	400.00	
OC12/12c	CCCKX	940.00	400.00	
OC48/OC48c	CXCZX	1,880.00	400.00	
OC-192	C2CAX	3,760.00	400.00	
1 Gigabit Ethernet	OCLGX	1,500.00	400.00	(N)
<u>EIS Channel Termination (EISCT) Switched Transport</u>				
DS1	XCSW1	9.06	231.46	
DS3	XCSW3	35.62	202.36	
<u>Security Escort Service, per hour</u>				
Engineer			\$ 80.00	
Technician			80.00	

(This page filed under Transmittal No. 52)

Issued: October 9, 2003

Effective: October 24, 2003

One SBC Plaza, Dallas, Texas 75202

ACCESS SERVICE

22. Metropolitan Statistical Access Area Services (Cont'd)22.5 Rates and Charges (Cont'd)22.5.2 Special Access Services (Cont'd)22.5.2.7 Gigabit Ethernet Metropolitan Area Network
(GigaMAN)(A) Recurring Charges

		Term Pricing Plan					(T)
	USOC	Monthly Extension	12 Mo.	36 Mo.	60 Mo.	NRC	
(1) Local Distribution Channel							
- Per Point of Termination Terminating Bit Rate 1 Gbps							
- All States	TMECS	\$3,800.00	\$3,300.00	\$2,850.00	\$2,500.00		
(2) Interoffice Transport Mileage							
- Fixed							
- All States	1L5XX	\$250.00	\$250.00	\$200.00	\$100.00		
- Per Mile 1 Gbps							
- All States	1L5XX	\$125.00	\$125.00	\$100.00	\$75.00		
(3) Repeater	VU4	\$2,500.00	\$2,400.00	\$1,150.00	\$850.00		(N)
(4) Diversity Options							
Local Channel Diversity							
-Per Channel Terminating Bit Rate 1 Gbps							
-All States	CPALX	\$750.00	\$750.00	\$750.00	\$750.00	0.00	
Inter Wire Center Diversity							
-Per Channel Terminating Bit Rate 1 Gbps							
-All States	CPATX	\$500.00	\$500.00	\$500.00	\$500.00	0.00	
Alternate Wire Center Diversity							
-Per Channel Termination bit Rat 1 Gbps							
-All States	CPAAX	\$1,200.00	\$1,200.00	\$1,200.00	\$1,200.00	0.00	

Certain material previously appearing on this page now appears on Original Page 22-19.1.

(This page filed under Transmittal No. 52)

Issued: October 9, 2003

Effective: October 24, 2003

One SBC Plaza, Dallas, Texas 75202

ACCESS SERVICE

22. Metropolitan Statistical Access Area Services (Cont'd)

(N)

22.5 Rates and Charges (Cont'd)22.5.2 Special Access Services (Cont'd)22.5.2.7 Gigabit Ethernet Metropolitan Area Network
(GigaMAN®) (Cont'd)

(N)

(B) Installation and Rearrangement Charges

(M)

All States

	USOC	12 Months	36 Months	60 Months
(1) Administrative Charge per Order	ORCMX	\$60.00	\$60.00	\$60.00
(2) Design Central Office Connection Charge per circuit	NRMCK	N/A	N/A	N/A
(3) Customer Connection Charge per termination	NRBBL	\$1,500.00	\$1,500.00	\$1,500.00

(M)

Certain material appearing on this page previously appeared on Original Page 22-19.

(This page filed under Transmittal No. 52)

Issued: October 9, 2003

Effective: October 24, 2003

One SBC Plaza, Dallas, Texas 75202