

## INTERSTATE SWITCHED ACCESS SERVICES TARIFF

## CHECK SHEET

Page 1 to 47, inclusive of this tariff are effective as of the date shown.

SHEET	REVISION		SHEET	REVISION	SHEET	REVISION	
Title	1 <sup>st</sup> Revised		39.3	9 <sup>th</sup> Revised	42	Original	42
1	17 <sup>th</sup> Revised	*	39.4	9 <sup>th</sup> Revised	43	Original	43
1.1	Original		39.5	9 <sup>th</sup> Revised	44	Original	44
3	1 <sup>st</sup> Revised		39.6	9 <sup>th</sup> Revised	45	Original	45
4	3 <sup>rd</sup> Revised	*	39.7	9 <sup>th</sup> Revised	46	Original	46
4.1	3 <sup>rd</sup> Revised	*	39.7.1	5 <sup>th</sup> Revised	47	Original	47
5	3 <sup>rd</sup> Revised	*	39.8	9 <sup>th</sup> Revised			
5.1	3 <sup>rd</sup> Revised	*	39.9	9 <sup>th</sup> Revised			
5.2	3 <sup>rd</sup> Revised	*	39.9.1	2 <sup>nd</sup> Revised			
6	1 <sup>st</sup> Revised	*	39.10	9 <sup>th</sup> Revised			
7	1 <sup>st</sup> Revised		39.11	9 <sup>th</sup> Revised			
10	1 <sup>st</sup> Revised		39.12	9 <sup>th</sup> Revised			
11	1 <sup>st</sup> Revised		39.13	9 <sup>th</sup> Revised			
13	1 <sup>st</sup> Revised	*	40	13 <sup>th</sup> Revised			
22	1 <sup>st</sup> Revised		40.0.1	7 <sup>th</sup> Revised			
26	1 <sup>st</sup> Revised		40.0.2	6 <sup>th</sup> Revised			
27	Original		40.1	12 <sup>th</sup> Revised			
30	2 <sup>nd</sup> Revised	*	40.2	12 <sup>th</sup> Revised			
33	1 <sup>st</sup> Revised		40.2.1	7 <sup>th</sup> Revised			
33.1	Original		40.2.2	7 <sup>th</sup> Revised			
34	3 <sup>rd</sup> Revised	*	40.2.2.1	5 <sup>th</sup> Revised			
35	2 <sup>nd</sup> Revised		40.2.3	7 <sup>th</sup> Revised			
36	4 <sup>th</sup> Revised	*	40.2.4	9 <sup>th</sup> Revised			
36.0.1	1 <sup>st</sup> Revised	*	40.3	6 <sup>th</sup> Revised			
36.0.2	Original		40.3.1	3 <sup>rd</sup> Revised			
36.1	4 <sup>th</sup> Revised	*	40.3.2	3 <sup>rd</sup> Revised			
36.1.0.1	Original	*	40.4	1 <sup>st</sup> Revised			
36.1.1	2 <sup>nd</sup> Revised	*	40.5	1 <sup>st</sup> Revised			
36.1.2	Original	*	40.6	4 <sup>th</sup> Revised	*		
36.2	2 <sup>nd</sup> Revised	*	40.6.1	1 <sup>st</sup> Revised	*		
36.2.1	Original	*	40.7	3 <sup>rd</sup> Revised	*		
37	5 <sup>th</sup> Revised	*	40.7.1	1 <sup>st</sup> Revised	*		
37.1	Original	*	40.8	3 <sup>rd</sup> Revised	*		
38	1 <sup>st</sup> Revised		40.9	2 <sup>nd</sup> Revised	*		
39	13 <sup>th</sup> Revised		40.10	2 <sup>nd</sup> Revised	*		
39.1	9 <sup>th</sup> Revised		40.11	2 <sup>nd</sup> Revised	*		
39.2	9 <sup>th</sup> Revised		41	1 <sup>st</sup> Revised			

\* New or Revised Page.

Transmittal # 19

Issued: September 22, 2023

Effective: October 7, 2023

By: Daryl Raiford, Chief Financial Officer  
900 Main Campus Drive, Suite 100  
Raleigh, NC 27606

---

INTERSTATE SWITCHED ACCESS SERVICES TARIFF

---

## SECTION 1 - DEFINITIONS

Certain terms used generally throughout this tariff for the Access Services of this Company are defined below.

**8YY Data Base Access Service** - The term "8YY Data Base Access Service" denotes a toll-free originating Trunk-side Access Service when the 8YY Service Access Code (i.e., 800, 822, 833, 844, 855, 866, 877, or 888 as available) is used.

**Access Service** - Access to the network of an Interexchange Carrier for the purpose of originating or terminating communications.

**Access Service Request (ASR) or Service Order**: The industry service order format used by Access Service Customers and access providers as agreed to by the Ordering and Billing Forum.

**Access Stimulation** – Occurs when the criteria in 47 C.F.R. § 61.3(bbb) (as applicable) are satisfied with respect to an exchange carrier or IPES Provider exchanging traffic with the Company or a VoIP Provider Partner. (N)  
|  
(N)

**ANI** - Automatic Number Identification; the codes transmitted between carriers that indicate the telephone number of the originating line.

**Authorized user** - A person, firm, corporation or other entity that either is authorized by the Customer to use Access Services or is placed in a position by the Customer, either through acts or omissions, to use Access Service.

**B8ZS** - Bipolar with 8-Zero Substitution - a line coding technique which permits DSO and DS1 transmission with 15 consecutive zeros. B8ZS support 64 KBPS clear channel transmission.

**BNA** - Billing Name and Address; the customer of record and billing address associated with an originating ANI.

**Carrier or Common Carrier** - See Interexchange Carrier, IPES Provider, and Exchange Carrier. (C)

**CCS/SS7** - Common Channel Switching/Signaling System 7; a switching network and transmission control standard.

**Channel** - A communications path between two or more points.

**Commission** - The Federal Communications Commission.

**Company** - Bandwidth.com CLEC, LLC, issuer of this tariff.

---

Transmittal # 19

---

Issued: September 22, 2023

Effective: October 7, 2023

By: Jeffrey A. Hoffman, Chief Financial Officer  
900 Main Campus Drive, Suite 100  
Raleigh, NC 27606

---

INTERSTATE SWITCHED ACCESS SERVICES TARIFF

---

## SECTION 1 - DEFINITIONS, (Cont'd.)

Customer - The person, firm, corporation or other entity that orders Service and is responsible for the payment of charges and for compliance with the Company's tariff regulations. The Customer could be an End User, interexchange carrier, a wireless provider, other telecommunications carriers or providers originating or terminating VoIP-PSTN Access Traffic, a local exchange carrier engaged in Access Stimulation, an IPES Provider engaged in Access Stimulation, or any other carrier authorized to operate. (C)

DNAL - Dedicated Network Access Line; a point to point circuit that provides interconnection to the CCS network on a dedicated Signal Transfer Point (STP) port. The DNAL provides the connection from the Customer designated premises to the Company STP.

DS0 - Digital Signal Level 0; a dedicated full duplex digital channel with line speeds of 2.4, 4.8, 9.36, 19.2, 56 or 64 Kbps.

DS1 - Digital Signal Level 1; a dedicated, high capacity, full duplex channel with a line speed of 1.544 Mbps isochronous serial data having a line signal format of either Alternate Mark Inversion (AMI) or Bipolar with 8 Zero Substitution (B8ZS) and either Superframe (D4) or Extended Superframe (ESF) formats. DS1 Service has the equivalent capacity of 24 Voice Grade or DSO services.

DS3- Digital Signal Level 3; a dedicated, high capacity, full duplex channel with a line speed of 44.736 Mbps isochronous serial data having a line code of bipolar with three zero substitution (B3ZS). Equivalent capacity of 28 DS 1 Services.

End User - Any individual, association, corporation, governmental agency or any other entity subscribing to telecommunications or VoIP service provided by an Exchange Carrier, IPES Provider, or VoIP Provider Partner where such individual association, corporation, governmental agency or other entity is not an Interexchange Carrier, IPES Provider, Local Exchange Carrier, Wireless Carrier or other entity otherwise utilizing the Company's service to provide a telecommunications service (as defined by applicable law) to its own customers. (C)

Exchange - A group of lines in a unit generally smaller than a LATA established in the tariff of an incumbent local exchange carrier for the administration of communications service in a specified area.

Exchange Carrier - Any individual, partnership, association, joint-stock company, trust, governmental entity or corporation engaged in the provision of local exchange telephone service or VoIP Service. (C)

Facility (or Facilities) - Any item or items of communications plant or equipment used to provide service or connect to the Company.

FGD - Feature Group D; a trunk side switched access connection to the public switched network.

FOC - Final Order Confirmation; the point prior to the start of installation when the order is confirmed.

---

Transmittal # 19

---

Issued: September 22, 2023

Effective: October 7, 2023

By: Jeffrey A. Hoffman, Chief Financial Officer  
900 Main Campus Drive, Suite 100  
Raleigh, NC 27606

---

INTERSTATE SWITCHED ACCESS SERVICES TARIFF

---

## SECTION 1 – DEFINITIONS, (Cont’d.)

Gbps - Gigabits per second; billions of bits per second.

GTA - Global Title Address; software instructions in the Signal Transfer Point (STP) that identify the signaling message destination.

ICB - Individual Case Basis; standard tariff pricing is not available. Each installation is individually priced and negotiated with the customer.

Interexchange Carrier (IXC) or Interexchange Common Carrier - Any individual, partnership, association, joint-stock company, trust, governmental entity or corporation engaged in state or foreign communication for hire by wire or radio, between two or more exchanges.

IPES Provider – Any individual, partnership, association, joint-stock company, trust, governmental entity or corporation engaged in the provision of a service that: (1) enables communications; (2) requires a broadband connection from the user’s location or end to end; (3) requires Internet Protocol-compatible customer premises equipment (CPE); and (4) permits users to receive calls that originate on the PSTN or that originate from an Internet Protocol service.

(N)  
|  
|  
|  
(N)

Kbps - Kilobits per second; 1000s of bits per second.

LATA – A local access and transport area established pursuant to the Modification of Final Judgment entered by the United States District Court for the District of Columbia in Civil Action No. 82-0192 for the provision and administration of communications services.

LEC - Local Exchange Company

Line Information Data Base (LIDB) - The data base which contains base information such as telephone numbers, calling card numbers and associated billed number restriction data used in connection with the validation and billing of calls.

Local Switching Center - The switching system, or the functional equivalent of the switching system, that provides service to the End User. A Local Switching Center is also referred to as End Office.

(C)  
(C)

Local Traffic - Traffic is "Local Traffic" under this tariff if (i) the call originates and terminates in the same exchange area; or (ii) the call originates and terminates within different exchanges that share a common mandatory local calling area. Traffic is “Local Traffic” regardless of whether the call is a TDM-based or IP-based call so long as the call originates or terminates on the PSTN.

(C)  
(C)  
(M)

Mbps - Megabits per second; millions of bits per second.

|  
|  
|  
(M)

Certain material previously found on this page is now located on Page 5.1.

Transmittal # 19

Issued: September 22, 2023

Effective: October 7, 2023

By: Jeffrey A. Hoffman, Chief Financial Officer  
900 Main Campus Drive, Suite 100  
Raleigh, NC 27606

---

INTERSTATE SWITCHED ACCESS SERVICES TARIFF

---

## SECTION 1 – DEFINITIONS, (Cont'd.)

Meet Point - A point of interconnection that is not an end office, tandem, or functional equivalent of an end office or tandem. (C)(M)  
(C)(M)

Meet Point Billing - The arrangement through which multiple Exchange Carriers involved in providing Access Service bill services on a proportional basis under their respective tariffs. (M)  
(M)

Non-Recurring Charges - One-time initial charges for services or facilities, including but not limited to charges for construction, installation, or special fees, for which the Customer becomes liable at the time service is ordered.

Premises - The space occupied by a Customer or Authorized User in a building or buildings or on contiguous property (except railroad rights-of-way, etc.).

OPC - Originating Point Code; a field within a signaling message that identifies the originating network Signaling Node.

POP - The physical location of an interexchange carrier's facilities.

Presubscription - An arrangement whereby an End User or other user of the Company's services may select and designate to the Company an Interexchange Carrier (IXC) or Carriers it wishes to access, without an Access Code, for completing both intraLATA toll calls and/or interLATA calls. The selected IXC(s) are referred to as the End User's or user's Primary Interexchange Carrier (PIC).

Query - An inquiry to a database to obtain information, processing instructions or service data.

Recurring Charges - The monthly charges to the Customer for services, facilities and equipment, which continue for the agreed upon duration of the service.

Signaling Point of Interface - The Customer designated location where the SS7 signaling information is exchanged between the Company and the Customer.

SSP - Service Switching Point; an end office, tandem switch or the functional equivalent of either the end office or tandem switch, equipped with signaling link hardware and software to perform Signal Point functions. SSPs participate in processing a CCS/SS7 call by requesting and responding to call processing instructions issued by the SCP. (C)  
(C)

Station - Refers to telephone, conference bridge, or IP compatible customer premise equipment from or to which calls are placed.

STP - Signal Transfer Point; a specialized packet switch that routes and translates signaling messages in the CCS network. (M)  
|  
|  
|  
(M)

Certain material now found on this page was previously located on Page 5  
Certain material previously found on this page is now located on Page 5.2.

---

Transmittal # 19

---

Issued: September 22, 2023

Effective: October 7, 2023

By: Jeffrey A. Hoffman, Chief Financial Officer  
900 Main Campus Drive, Suite 100  
Raleigh, NC 27606

---

INTERSTATE SWITCHED ACCESS SERVICES TARIFF

---

## SECTION 1 – DEFINITIONS, (Cont'd.)

Tandem Switching – Tandem switching is a communication switching function that provides a concentration and distribution function for originating or terminating traffic between Local Switching Centers. Tandem Switching includes the IP-based functional equivalent of TDM-based tandem switching.

(M)  
|  
(C)(M)

TDM – Time Division Multiplexing – a method of transmitting and receiving voice signals over the Public Switched Telephone Network (PSTN).

(M)  
(M)

Terminal Equipment - Telecommunications devices, apparatus and associated wiring on the Customer-designated premises.

(M)  
(M)

Trunk - A communications path connecting two TDM or IP-based switching systems in a network, used in the establishment of an end-to-end connection.

(C)

VOIP-PSTN Access Traffic - VoIP-PSTN Access Traffic is the access traffic exchanged between the Company and the Customer in time division multiplexing ("TDM") format that originates and/or terminates in Internet protocol ("IP") format. Traffic originates and/or terminates in IP format if it originates from and/or terminates to an end user customer of a service that requires Internet protocol compatible customer premises equipment.

VoIP Service – Transmission of communication by aid of wire, cable, radio, or other like connection using Voice Over Internet Protocol that is originated or terminated in Internet Protocol (IP) format. VoIP services are those services that require the use of IP compatible customer premises equipment.

VoIP Provider Partner – A provider of VoIP Service to End Users where the Company provides the connectivity and supporting functions for PSTN interconnection and/or number resources. A VoIP Provider Partner may or may not provide a physical connection to the last-mile facilities used to serve an End User.

Wireless Provider - Any carrier authorized to operate as a provider of cellular, personal communications, paging or other form of wireless transmission.

Certain material now found on this page was previously located on Page 5.1.

---

Transmittal # 19

---

Issued: September 22, 2023

Effective: October 7, 2023

By: Jeffrey A. Hoffman, Chief Financial Officer  
900 Main Campus Drive, Suite 100  
Raleigh, NC 27606

---

INTERSTATE SWITCHED ACCESS SERVICES TARIFF

---

## SECTION 2 – RULES AND REGULATIONS

## 2.1 Undertaking of the Company

## 2.1.1 Scope

The Company's services offered pursuant to this Tariff are furnished for Switched Access Service. The Company may offer these services over its own or resold facilities, and Switched Access Service may be TDM-based, IP-based, or a combination thereof so long as the call originates or terminates on the PSTN.

(C)  
(C)

The Company installs, operates, and maintains the communications services provided herein in accordance with the terms and conditions set forth under this Tariff. The Company may act as the Customer's agent for ordering access connection facilities provided by other carriers or entities as required in the Commission's rules and orders, when authorized by the Customer, to allow connection of a Customer's location to the Company's network. The Customer shall be responsible for all charges due for such service agreement.

The Company's services and facilities are provided on a monthly basis unless otherwise indicated, and are available twenty-four hours per day, seven days per week.

## 2.1.2 Shortage of Equipment or Facilities

- A. The Company reserves the right to limit or to allocate the use of existing facilities, or of additional facilities offered by the Company when necessary because of lack of facilities or due to some other cause beyond the Company's control.
- B. The furnishing of service under this tariff is subject to the availability on a continuing basis of all the necessary facilities and is limited to the capacity of the Company's facilities as well as facilities the company may obtain from other Carriers from time to time, to furnish service as required at the sole discretion of the Company.
- C. The provisioning and restoration of service in emergencies shall be in accordance with Part 64, Subpart D, Appendix A of the Federal Communications Commission's Rules and Regulations, which specifies the priority system for such activities.

---

Transmittal # 19

---

Issued: September 22, 2023

Effective: October 7, 2023

By: Jeffrey A. Hoffman, Chief Financial Officer  
900 Main Campus Drive, Suite 100  
Raleigh, NC 27606

---

INTERSTATE SWITCHED ACCESS SERVICES TARIFF

---

SECTION 2 – RULES AND REGULATIONS, (Cont'd.)

2.1 Undertaking of the Company, (Cont'd.)

2.1.6 Provisions of Equipment and Facilities

- A. The Company shall use reasonable efforts to make available services to a Customer on or before a particular date, subject to the provisions of and compliance by the Customer with, the regulations contained in this tariff. The Company does not guarantee availability by any such date and shall not be liable for any delays in commencing service to any Customer.
- B. The Company shall use reasonable efforts to maintain facilities and equipment that it furnishes to the Customer. The Customer may not, nor may the Customer permit others to, rearrange, disconnect, remove, attempt to repair or otherwise interfere with any of the facilities or equipment installed by the Company, except upon the written consent of the Company.
- C. The Company may substitute, change or rearrange any equipment or facility at any time and from time to time, but shall not thereby alter the technical parameters of the service provided to the Customer.
- D. Equipment the Company provides or installs at the Customer Premises for use in connection with the services the Company offers shall not be used for any purpose other than that for which the Company provided it.
- E. The Customer shall be responsible for the payment of service charges imposed on the Company by another entity, for visits to the Customer Premises when the service difficulty or trouble report results from the use of equipment or facilities provided by any party other than the Company, including but not limited to the Customer.

(T)

Transmittal # 19

Issued: September 22, 2023

Effective: October 7, 2023

By: Jeffrey A. Hoffman, Chief Financial Officer  
900 Main Campus Drive, Suite 100  
Raleigh, NC 27606



---

INTERSTATE SWITCHED ACCESS SERVICES TARIFF

---

## SECTION 2 – RULES AND REGULATIONS, (Cont'd.)

## 2.7 Transfers and Assignments

Neither the Company nor the Customer may assign or transfer its rights or duties in connection with the services and facilities provided by the Company without the written consent of the other party, except that the Company may assign its rights and duties (a) to any subsidiary, parent Company or affiliate of the Company (b) pursuant to any sale or transfer of substantially all the assets of the Company; or pursuant to any financing, merger or reorganization of the Company.

## 2.8 Notices and Communications

2.8.1 Delivery of calls to or acceptance of calls from the Company's End User Stations over Company-switched local exchange services, or the functional equivalent of switched local exchange services, constitutes an order by the Customer to purchase Switched Access Services as described herein. Similarly the selection by a Company's End User of the Customer as the presubscribed IXC constitutes an order of switched access by the Customer. In these cases, an invoice will be the first communication from the Company to the Customer. In other instances a Service Order may be used.

(C)  
(C)

2.8.2 The Customer shall designate on the Service Order an address to which the Company shall mail or deliver all notices and other communications, except that the Customer may also designate a separate address to which the Company's bills for service shall be mailed.

2.8.3 The Company shall designate on the Service Order an address to which the Customer shall mail or deliver all notices and other communications, except that the Company may designate a separate address, on each bill for service, to which the Customer shall mail payment on that bill

2.8.4 All notices or other communications required to be given pursuant to this tariff shall be in writing. Notices and other communications of either party, and all bills mailed by the Company, shall be presumed to have been delivered to the other party on the third business day following deposit of the notice, communication, or bill with the U.S. Mail or a private delivery service, prepaid and properly addressed, or when actually received or refused by the addressee, whichever occurs first.

2.8.5 The Company or the Customer shall advise the other party of any changes to the addresses designated for notices, other communications or billing, by following the procedures for giving notice set forth herein.

---

Transmittal # 19

---

Issued: September 22, 2023

Effective: October 7, 2023

By: Jeffrey A. Hoffman, Chief Financial Officer  
900 Main Campus Drive, Suite 100  
Raleigh, NC 27606

---

INTERSTATE SWITCHED ACCESS SERVICES TARIFF

---

SECTION 4 – SWITCHED ACCESS SERVICE

4.1 General

Switched Access Service involves the use of common originating, terminating, switching and transport facilities, whether TDM-based or IP-based, to provide the ability to originate or terminate calls between an End User's Station, and other Stations on the PSTN. (C)

Rates and charges are set forth in Section 5. The application of rates for Switched Access Service is described in Section 5.

4.2 Provision and Description of Switched Access Service Arrangements

4.2.1 Feature Group Access

Feature Group ("FG") Access provides trunk-side access to Tandem Switches and Local Switching Center switches, for the Customer's use in originating and terminating communications. Basic FG Access service will be provided with Multi-Frequency In-Band Signaling (SS7 is also available, where capabilities exist).

All traffic is routed to and from the Company's Local Switching Center via the Customer's tandem provider or via end office trunking, where available.

4.2.2 Manner of Provision

Trunks used for Switched Access Service may be configured for one-way (either originating only or terminating only) or for two-way directionality.

---

Transmittal # 19

Issued: September 22, 2023

Effective: October 7, 2023

By: Jeffrey A. Hoffman, Chief Financial Officer  
900 Main Campus Drive, Suite 100  
Raleigh, NC 27606

---

INTERSTATE SWITCHED ACCESS SERVICES TARIFF

---

## SECTION 5 – SWITCHED ACCESS RATES

## 5.1 General

This section contains the specific regulations governing the rates and charges that apply for Switched Access Services:

The Company offers Tandem Switching Access Services, Local Switching Access Service – Direct Connection, and Local Switching Access Service – Indirect Connection.

There are three types of rates and charges that apply to Switched Access Service:

- Non-Recurring Charges: One-time charges that apply for a specific work activity.
- Recurring Charges: Fixed charges apply each month and depend on the number and type of facilities in place.
- Usage Charges: Charges that are applied on a per access minute basis. Usage rates are accumulated over a monthly period.

5.1.1 The Company will assess and collect switched access rate elements under this tariff for access services, regardless of whether (i) the Access Services are TDM-based or IP-based, (ii) the Access Services are facilities-based or resold, or (iii) the Company itself delivers such traffic to the called party's Station or delivers the call to the called party's Station via contractual or other arrangements with a VoIP Provider Partner that does not itself seek to collect switched access charges for the same traffic. The Company will not charge for functions not performed by the Company or its VoIP Provider Partner. For purposes of this provision, functions provided by the Company or its VoIP Provider Partner as part of transmitting telecommunications between designated points using, in whole or in part, technology other than TDM transmission in a manner that is functionally equivalent to a service offered by a local exchange carrier shall constitute the performance of the functionally equivalent traditionally applicable carrier access service and their related charges.

(C)  
(C)

## 5.1.2 Identification and rating of VOIP-PSTN Access Traffic.

5.1.2.1 In the absence of an agreement between the Company and the Customer specifying the treatment of VoIP-PSTN Traffic, all Access traffic will be treated as VoIP-PSTN Access traffic and assessed switched access charges at the rates set forth in Section 5.4 of this tariff.

---

Transmittal # 19

---

Issued: September 22, 2023

Effective: October 7, 2023

By: Jeffrey A. Hoffman, Chief Financial Officer  
900 Main Campus Drive, Suite 100  
Raleigh, NC 27606

---

INTERSTATE SWITCHED ACCESS SERVICES TARIFF

---

## SECTION 5 – SWITCHED ACCESS RATES

## 5.1 General (cont'd.)

## 5.1.2 Identification and rating of VOIP-PSTN Access Traffic (cont'd.)

## 5.1.2.2. Calculation and application of Facilities-Based VoIP Usage Factors to VOIP-PSTN Access Traffic

Facilities-based (“FB”) refers to VOIP-PSTN Access Traffic that is originated or terminated over a physical connection to the last-mile facilities used to serve an End User. Company will assess switched access charges based upon a FB percent usage factor (“FBU”) that reflects the percentage amount of VOIP-PSTN Access Traffic that travels over a physical connection to the last-mile facilities used to serve an End User. When Customer orders a service from this tariff, the customer shall be responsible for the payment of Access Service charges that reflect Company’s FBU. If the Company or its VoIP Provider Partner provides a physical connection to the last-mile facilities used to serve an End User, the Local Switching Access Service rates will apply. If the Company or its VoIP Provider Partner does not provide a physical connection to the last-mile facilities used to serve the End User, the Tandem Switching Access Service rates will apply.

FCC Form 477 Instructions collect information about two types of interconnected VoIP subscriptions. Those instructions require providers of interconnected VoIP service to report subscriptions as “Over-the-top Subscriptions” if the provider (including affiliates) does not sell to the end user the high capacity connection that terminates at the end user’s premises and delivers the interconnected VoIP service. If a subscription is not an Over-the-top Subscription, providers report it as “All Other Subscriptions”.

(T)

The Company FBU shall be based on information such as the number of the Company’s and its VoIP Provider Partner’s reported “All Other Subscriptions” to interconnected VoIP service in the state (e.g. as reported on FCC Form 477), traffic studies, actual call detail or other relevant and verifiable information. The Company shall retain the call detail, work papers, and information used to develop the FBU factors for a minimum of one year.

The Company may update the FBU factors quarterly or annually. The revised FBU factors will serve as the basis for future billing and will be effective on the bill date of each such month and shall serve as the basis for subsequent monthly billing until superseded by new FBU factors. No prorating or back billing will be done based on the updated FBU factors.

---

Transmittal # 19

Issued: September 22, 2023

Effective: October 7, 2023

By: Jeffrey A. Hoffman, Chief Financial Officer  
900 Main Campus Drive, Suite 100  
Raleigh, NC 27606

---

INTERSTATE SWITCHED ACCESS SERVICES TARIFF

---

## SECTION 5 – SWITCHED ACCESS RATES

## 5.2 Rate Categories

## 5.2.1 Tandem Switching Access Service

## A. Direct Connection (Originating and Terminating)

Tandem Switching Access Service – Direct Connection is an access service providing transmission and tandem switching (or the functional equivalent of transmission and tandem switching) between the Customer designated premises and the Company switch(es) where the Customer's traffic is switched from or to an entity other than an End User, including a (i) VoIP Provider Partner that does not provide the last-mile connection to the End User Station or (ii) a Carrier, for purposes of originating or terminating the Customer's communications, and where the Customer's switch is connected directly to the Company's switch. The following rate elements will apply to Tandem Switching Access Service – Direct Connection. Access Tandem Switching, Tandem-Switched Transport Termination, Tandem-Switched Transport – Facility, Common Multiplexing, Dedicated Trunk Port or Common Trunk Port. For originating 8YY calls, the Toll-Free 8YY Data Base Query charge will also apply. The third-party access tandem provider may apply additional charges for switching and transport functions performed by that provider. For Terminating calls, Access Tandem Switching only applies when calls are terminated to a 3<sup>rd</sup> Party and not the Company switch. With Direct Connection, Customer is responsible for ordering or providing dedicated facilities or reasonable and appropriate bandwidth to the Company's point of presence in the access tandem serving area. Where applicable, the Dedicated Trunk Port charge will be applied on an Individual Case Basis. If Customer prefers to connect via IP, the Common Trunk Port charge will apply. The application of access charges to Tandem Switching Access Service is illustrated in diagrams at the end of this Section 5. The Company shall not assess interstate or intrastate terminating Access Tandem Switching or Tandem-Switched Transport Termination charges on IXC's when the terminating traffic is destined for telephone numbers assigned to a competitive local exchange carrier, or a rate-of-return local exchange carrier, or is destined, directly or indirectly, for telephone numbers assigned or allocated to an IPES Provider, where such local exchange carrier or IPES Provider is engaged in Access Stimulation. Instead, the Company shall assess charges as follows:

(C)  
(C)(C)  
|  
|  
|  
|  
|  
|  
(C)

Transmittal # 19

Issued: September 22, 2023

Effective: October 7, 2023

By: Jeffrey A. Hoffman, Chief Financial Officer  
900 Main Campus Drive, Suite 100  
Raleigh, NC 27606

---

INTERSTATE SWITCHED ACCESS SERVICES TARIFF

---

SECTION 5 – SWITCHED ACCESS RATES

5.2 Rate Categories (Cont'd.)

5.2.1 Tandem Switching Access Service (Cont'd.)

A. Direct Connection (Originating and Terminating) (Cont'd.)

(1) In cases in which the local exchange carrier is engaged in Access Stimulation, the Company will assess interstate or intrastate terminating Access Tandem Switching or Tandem-Switched Transport Termination charges, as applicable, on the local exchange carrier.

(2) In cases in which the IPES Provider engaged in Access Stimulation has obtained telephone numbers from a local exchange carrier, the Company will assess interstate or intrastate terminating Access Tandem Switching or Tandem-Switched Transport Termination charges, as applicable, on the local exchange carrier that allocated its directly assigned numbers to the IPES Provider engaged in Access Stimulation.

(3) In cases in which an IPES Provider engaged in Access Stimulation has been assigned telephone numbers directly from the numbering administrator, the Company will assess interstate or intrastate terminating Access Tandem Switching or Tandem-Switched Transport Termination charges, as applicable, on the IPES Provider

(C)

(C)

---

Transmittal # 19

Issued: September 22, 2023

Effective: October 7, 2023

By: Jeffrey A. Hoffman, Chief Financial Officer  
900 Main Campus Drive, Suite 100  
Raleigh, NC 27606

---

INTERSTATE SWITCHED ACCESS SERVICES TARIFF

---

## SECTION 5 – SWITCHED ACCESS RATES

## 5.2 Rate Categories (Cont'd.)

## 5.2.1 Tandem Switching Access Service (Cont'd.)

## B. Indirect Connection (Originating and Terminating)

Tandem Switching Access Service – Indirect Connection is an access service providing transmission and tandem switching (or the functional equivalent of transmission and tandem switching) between the Customer designated premises and the Company switch(es) as well as transport to or from the Customer's tandem provider, where the Customer's traffic is switched from or to an entity other than an End User, including (i) a VoIP Provider Partner that does not provide the last-mile connection to the End User or (ii) a Carrier, for purposes of originating or terminating the Customer's communications. The following rate elements will apply to Tandem Switching Access Service – Indirect Connection: Access Tandem Switching, Tandem-Switched Transport Termination, Tandem-Switched Transport–Facility, Common Multiplexing, and Common Trunk Port. For originating 8YY calls, the Toll-Free 8YY Data Base Query charge will also apply. The third-party access tandem provider may apply additional charges for switching and transport functions performed by that provider. For Terminating calls, Access Tandem Switching only applies when calls are terminated to a 3<sup>rd</sup> Party and not the Company switch. The application of access charges to Tandem Switching Access Service is illustrated in diagrams at the end of this Section 5. The Company shall not assess interstate or intrastate terminating Access Tandem Switching or Tandem-Switched Transport Termination charges on IXC's when the terminating traffic is destined for telephone numbers assigned to a competitive local exchange carrier, or a rate-of-return local exchange carrier, or is destined, directly or indirectly, for telephone numbers assigned or allocated to an IPES Provider, where such local exchange carrier or IPES Provider is engaged in Access Stimulation. Instead, the Company shall assess charges as follows:

(C)

(C)

(C)

Transmittal # 19

Issued: September 22, 2023

Effective: October 7, 2023

By: Jeffrey A. Hoffman, Chief Financial Officer  
900 Main Campus Drive, Suite 100  
Raleigh, NC 27606

# INTERSTATE SWITCHED ACCESS SERVICES TARIFF

## SECTION 5 – SWITCHED ACCESS RATES

## 5.2 Rate Categories (Cont'd.)

### 5.2.1 Tandem Switching Access Service (Cont'd.)

B. Indirect Connection (Originating and Terminating) (Cont'd.)

(1) In cases in which the local exchange carrier is engaged in Access Stimulation, the Company will assess interstate or intrastate terminating Access Tandem Switching or Tandem-Switched Transport Termination charges, as applicable, on the local exchange carrier.

(2) In cases in which the IPES Provider engaged in Access Stimulation has obtained telephone numbers from a local exchange carrier, the Company will assess interstate or intrastate terminating Access Tandem Switching or Tandem-Switched Transport Termination charges, as applicable, on the local exchange carrier that allocated its directly assigned numbers to the IPES Provider engaged in Access Stimulation.

(3) In cases in which an IPES Provider engaged in Access Stimulation has been assigned telephone numbers directly from the numbering administrator, the Company will assess interstate or intrastate terminating Access Tandem Switching or Tandem-Switched Transport Termination charges, as applicable, on the IPES Provider.

(C)

Transmittal # 19

---

Issued: September 22, 2023

---

Effective: October 7, 2023

By: Jeffrey A. Hoffman, Chief Financial Officer  
900 Main Campus Drive, Suite 100  
Raleigh, NC 27606



---

INTERSTATE SWITCHED ACCESS SERVICES TARIFF

---

## SECTION 5 – SWITCHED ACCESS RATES

## 5.2 Rate Categories (Cont'd.)

## 5.2.2 Local Switching Access Service - Direct Connection (Originating and Terminating)

Local Switching Access Service - Direct Connection is an access service providing the Customer connections to and use of end office switching equipment (or the functional equivalent of end office switching equipment) for the origination or termination of the Customer's communications to the Company's End Users or End Users of a VoIP Provider Partner that provides the last mile connection to the End User. Charges for Local Switching Access Service – Direct Connection include the following rate elements: End Office Switching , Common Trunk Port, Tandem Switched Transport Termination and Common Multiplexing, and Tandem Switched Transport Facility. The third-party access tandem provider may apply additional charges for switching and transport functions performed by that provider. If the Company or its VoIP Provider Partner does not provide a physical connection to the last-mile facilities used to serve the End User, the Tandem Switching Access Service rates will apply.

(C)

(C)

(C)

|

(C)

With Direct Connection, Customer is responsible for ordering or providing dedicated facilities or reasonable and appropriate bandwidth to the Company's point of presence in the access tandem serving area. Where applicable, the Dedicated Trunk Port charge will be applied on an Individual Case Basis. If Customer prefers to connect via IP, the Common Trunk Port charge will apply. The application of access charges to Local Switching Access Service is illustrated in diagrams at the end of this Section 5.

---

Transmittal # 19

Issued: September 22, 2023

Effective: October 7, 2023

By: Jeffrey A. Hoffman, Chief Financial Officer  
900 Main Campus Drive, Suite 100  
Raleigh, NC 27606

---

INTERSTATE SWITCHED ACCESS SERVICES TARIFF

---

## SECTION 5 – SWITCHED ACCESS RATES

## 5.2 Rate Categories, (Cont'd.)

5.2.2 Local Switching Access Service - Direct Connection (Originating and Terminating)  
(Cont'd.)

The Company shall not assess interstate or intrastate terminating Tandem-Switched Transport Termination charges on IXCs when the terminating traffic is destined for telephone numbers assigned to a competitive local exchange carrier, or a rate-of-return local exchange carrier, or is destined, directly or indirectly, for telephone numbers assigned or allocated to an IPES Provider, where such local exchange carrier or IPES Provider is engaged in Access Stimulation. Instead, the Company shall assess charges as follows:

(1) In cases in which the local exchange carrier is engaged in Access Stimulation, the Company will assess interstate or intrastate terminating Tandem-Switched Transport Termination charges, as applicable, on the local exchange carrier.

(2) In cases in which the IPES Provider engaged in Access Stimulation has obtained telephone numbers from a local exchange carrier, the Company will assess interstate or intrastate terminating Tandem-Switched Transport Termination charges, as applicable, on the local exchange carrier that allocated its directly assigned numbers to the IPES Provider engaged in Access Stimulation.

(3) In cases in which an IPES Provider engaged in Access Stimulation has been assigned telephone numbers directly from the numbering administrator, the Company will assess interstate or intrastate terminating Tandem-Switched Transport Termination charges, as applicable, on the IPES Provider

---

Transmittal # 19

---

Issued: September 22, 2023

Effective: October 7, 2023

By: Jeffrey A. Hoffman, Chief Financial Officer  
900 Main Campus Drive, Suite 100  
Raleigh, NC 27606

---

INTERSTATE SWITCHED ACCESS SERVICES TARIFF

---

## SECTION 5 – SWITCHED ACCESS RATES, (Cont’d.)

## 5.2 Rate Categories, (Cont’d.)

## 5.2.3 Local Switching Access Service - Indirect Connection (Originating and Terminating)

Local Switching Access Service - Indirect Connection is an access service providing the Customer use of end office switching equipment (or its functional equivalent of end office switching equipment) for the origination or termination of the Customer's communications to the Company's End Users or End Users of a VoIP Provider Partner that provides the last-mile connection to the End User as well as transport to or from the Customer's tandem provider. Charges for Local Switching Access Service - Indirect Connection include the following rate elements: End Office Switching, Common Trunk Port, Tandem Switched Transport Termination and Common Multiplexing, and Tandem Switched Transport Facility. For originating 8YY calls, the Toll-Free 8YY Data Base Query charge will also apply. The third-party access tandem provider may apply additional charges for switching and transport functions performed by that provider. The application of access charges to Local Switching Access Service is illustrated in diagrams at the end of this Section 5. If the Company or its VoIP Provider Partner does not provide a physical connection to the last-mile facilities used to serve the End User, the Tandem Switching Access Service rates will apply. The Company shall not assess interstate or intrastate terminating Tandem-Switched Transport Termination charges on IXC's when the terminating traffic is destined for telephone numbers assigned to a competitive local exchange carrier, or a rate-of-return local exchange carrier, or is destined, directly or indirectly, for telephone numbers assigned or allocated to an IPES Provider, where such local exchange carrier or IPES Provider is engaged in Access Stimulation. Instead, the Company shall assess charges as follows:

(1) In cases in which the local exchange carrier is engaged in Access Stimulation, the Company will assess interstate or intrastate terminating Tandem-Switched Transport Termination charges, as applicable, on the local exchange carrier.

(2) In cases in which the IPES Provider engaged in Access Stimulation has obtained telephone numbers from a local exchange carrier, the Company will assess interstate or intrastate terminating Tandem-Switched Transport Termination charges, as applicable, on the local exchange carrier that allocated its directly assigned numbers to the IPES Provider engaged in Access Stimulation.

(3) In cases in which an IPES Provider engaged in Access Stimulation has been assigned telephone numbers directly from the numbering administrator, the Company will assess interstate or intrastate terminating Tandem-Switched Transport Termination charges, as applicable, on the IPES Provider.

*Certain material previously found on this page is now located on Page 37.1.*

Transmittal # 19

Issued: September 22, 2023

Effective: October 7, 2023

By: Jeffrey A. Hoffman, Chief Financial Officer  
900 Main Campus Drive, Suite 100  
Raleigh, NC 27606

---

INTERSTATE SWITCHED ACCESS SERVICES TARIFF

---

SECTION 5 – SWITCHED ACCESS RATES, (Cont’d.)

5.2 Rate Categories, (Cont’d.)

(M)

5.2.4 Toll-Free 8YY Data Base Query

The Toll-Free 8YY Data Base Query Charge, will apply for each Toll-Free 8YY call query received at the Company’s (or its provider’s) Toll-Free 8YY database.

5.2.5 Toll-Free 8YY Switched Access Service

The Toll-Free 8YY Switched Access Service is an originating access service in which the Company delivers Toll Free calls to Customers.

5.2.6 Optional Features

Other optional features may be available on an Individual Case Basis (ICB).

(M)

Certain material located on this page was previously located on page 37.

Transmittal # 19

Issued: September 22, 2023

Effective: October 7, 2023

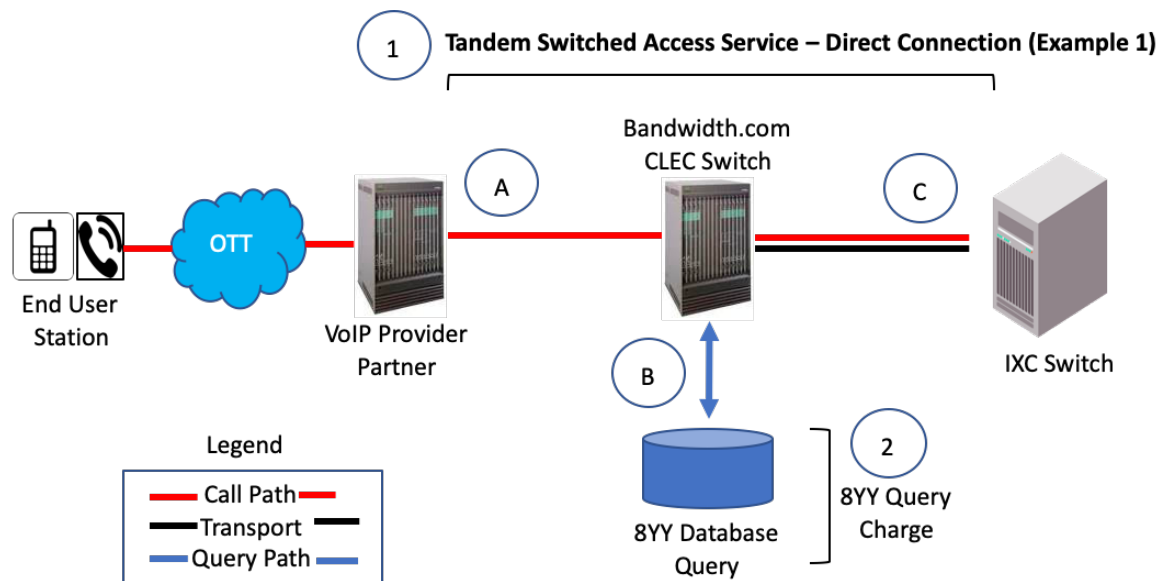
By: Jeffrey A. Hoffman, Chief Financial Officer  
900 Main Campus Drive, Suite 100  
Raleigh, NC 27606

## INTERSTATE SWITCHED ACCESS SERVICES TARIFF

## SECTION 5 – SWITCHED ACCESS RATES, (Cont'd.)

**Tandem Switching Access Service – Direct Connection**

Section 5.2.1.A (Sections 5.2.4 and 5.2.5 also apply to Originating 8YY Calls)

**Originating Call Flow:**

- A. End User places long distance call that is routed to Bandwidth.com CLEC switch.
- B. If 8YY call, Bandwidth.com CLEC looks up IXC that should receive the call in 8YY Database.
- C. Call is routed to IXC switch via dedicated transport.

**Originating Charges:**

Bandwidth.com CLEC charges Customer for:

- (1) Tandem Switching Access Service – Direct Connection, which is comprised of:
  - (a) Access Tandem switching;
  - (b) Tandem-Switched Transport Termination and Common Multiplexing;
  - (c) Tandem-Switched Transport - Facility;
  - (d) Dedicated Trunk Port (ICB) or Common Trunk Port
- (2) 8YY Query Charge, as applicable.

Customer is responsible for providing or ordering dedicated facilities to Bandwidth.com CLEC's point of presence in the access tandem serving area.

**Terminating Call Flow:**

- C. IXC delivers terminating long distance call to Bandwidth.com CLEC switch via dedicated transport.
- A. Bandwidth.com CLEC switches and routes call to VoIP Provider Partner

**Terminating Charges:**

Bandwidth.com CLEC charges Customer for:

- (1) Tandem Switching Access Service – Direct Connection, which is comprised of:
  - (a) Tandem-Switched Transport Termination and Common Multiplexing;
  - (b) Tandem-Switched Transport - Facility;
  - (c) Dedicated Trunk Port (ICB) or Common Trunk Port

Customer is responsible for providing or ordering dedicated facilities to Bandwidth.com CLEC's point of presence in the access tandem serving area.

Transmittal # 19

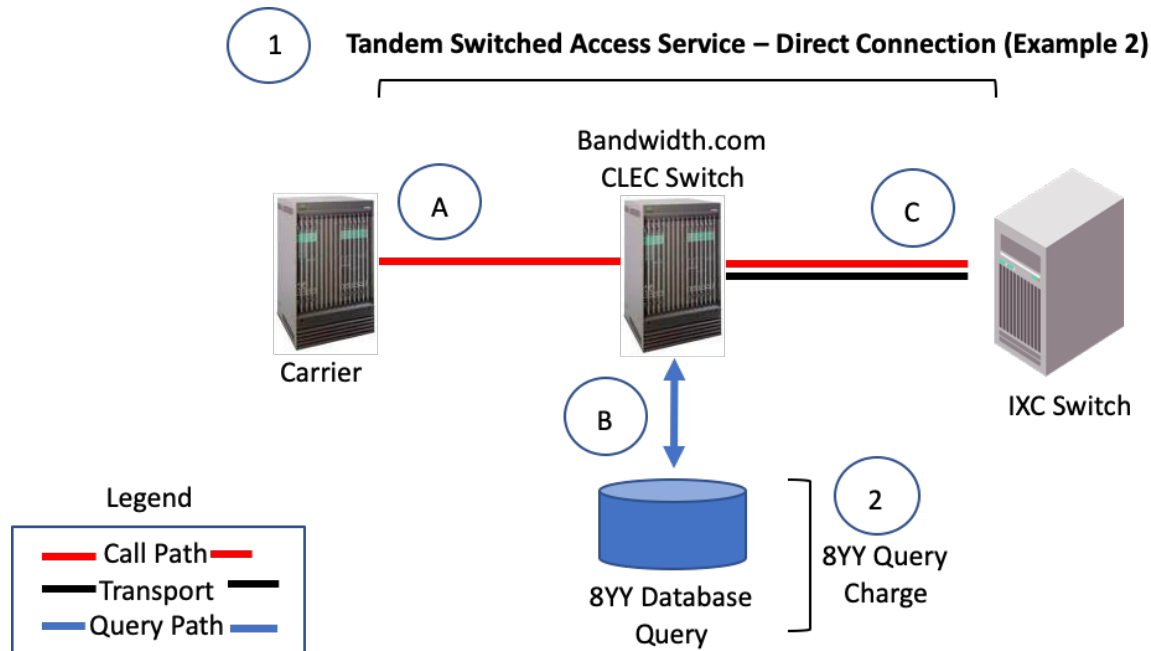
Issued: September 22, 2023

Effective: October 7, 2023

By: Jeffrey A. Hoffman, Chief Financial Officer  
900 Main Campus Drive, Suite 100  
Raleigh, NC 27606

## INTERSTATE SWITCHED ACCESS SERVICES TARIFF

## SECTION 5 – SWITCHED ACCESS RATES, (Cont'd.)

**Originating Call Flow:**

- A. 3<sup>rd</sup> Party Carrier routes long distance call to Bandwidth.com CLEC switch.  
 B. If 8YY call, Bandwidth.com CLEC looks up IXC that should receive the call in 8YY Database.  
 C. Call is routed to IXC switch via dedicated transport.

**Originating Charges:**

Bandwidth.com CLEC charges Customer for:

- (1) Tandem Switching Access Service – Direct Connection, which is comprised of:
- (a) Access Tandem switching;
  - (b) Tandem-Switched Transport Termination and Common Multiplexing;
  - (c) Tandem-Switched Transport - Facility;
  - (d) Dedicated Trunk Port (ICB) or Common Trunk Port

- (2) 8YY Query Charge, as applicable.

Customer is responsible for providing or ordering dedicated facilities to Bandwidth.com CLEC's point of presence in the access tandem serving area.

(C)

**Terminating Call Flow:**

- C. IXC delivers terminating long distance call to Bandwidth.com CLEC switch via dedicated transport.  
 A. Bandwidth.com CLEC switches and routes call to 3<sup>rd</sup> Party Carrier.

**Terminating Charges:**

Bandwidth.com CLEC charges Customer for:

- (1) Tandem Switching Access Service – Direct Connection, which is comprised of:
- (a) Access Tandem Switching
  - (b) Tandem-Switched Transport Termination and Common Multiplexing;
  - (c) Tandem-Switched Transport - Facility;
  - (d) Dedicated Trunk Port (ICB) or Common Trunk Port

Customer is responsible for providing or ordering dedicated facilities to Bandwidth.com CLEC's point of presence in the access tandem serving area.

(C)

Transmittal # 19

Issued: September 22, 2023

Effective: October 7, 2023

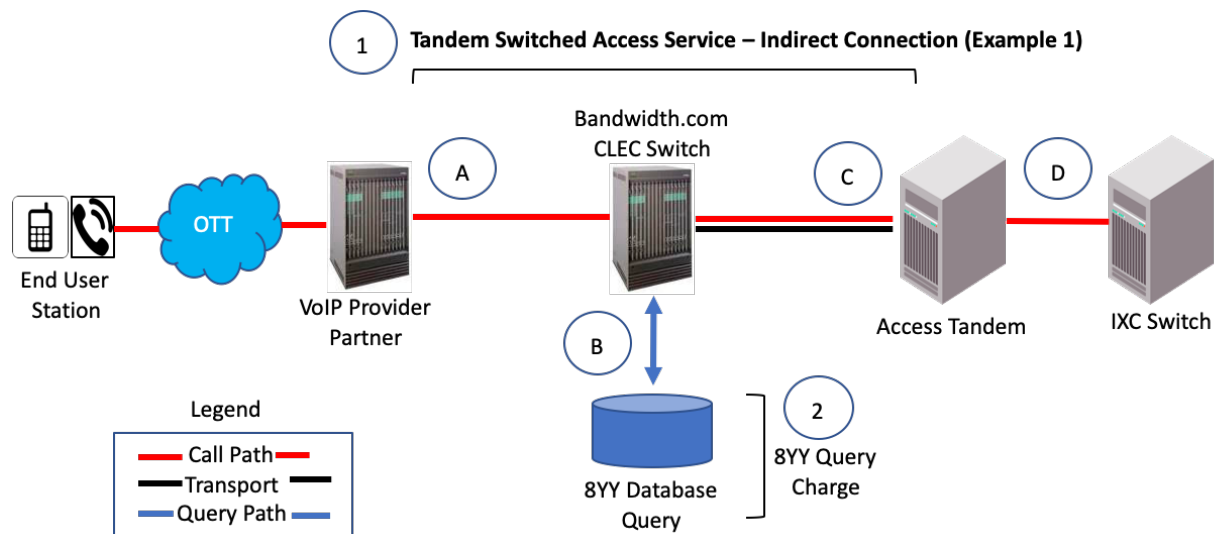
By: Jeffrey A. Hoffman, Chief Financial Officer  
 900 Main Campus Drive, Suite 100  
 Raleigh, NC 27606

## INTERSTATE SWITCHED ACCESS SERVICES TARIFF

## SECTION 5 – SWITCHED ACCESS RATES, (Cont'd.)

**Tandem Switching Access Service – Indirect Connection**

Section 5.2.1.B (Sections 5.2.4 and 5.2.5 also apply to Originating 8YY Calls)

**Originating Call Flow:**

- A. End User places long distance call that is routed to Bandwidth.com CLEC switch.
- B. If 8YY call, Bandwidth.com CLEC looks up IXC that should receive the call in 8YY Database.
- C. Call is routed from Bandwidth.com CLEC switch to Third-Party Access Tandem over shared transport.
- D. Third-Party Access Tandem provider routes call to IXC.

**Originating Charges:**

Bandwidth.com CLEC charges Customer for:

- (1) Tandem Switching Access Service – Indirect Connection, which is comprised of:
  - (a) Access Tandem switching;
  - (b) Tandem-Switched Transport Termination and Common Multiplexing;
  - (c) Tandem-Switched Transport – Facility.
  - (d) Common Trunk Port
- (2) 8YY Query Charge, as applicable.

Additional charges may be assessed by the third-party access tandem provider.

(C)

**Terminating Call Flow:**

- D. IXC delivers terminating long distance call to Third-Party Access Tandem.
- C. Third-Party Access Tandem provider routes call over shared transport to Bandwidth.com CLEC switch.
- A. Call is routed from Bandwidth.com CLEC switch to VoIP Provider Partner.

**Terminating Charges:**

Bandwidth.com CLEC charges Customer for:

- (1) Tandem Switching Access Service – Indirect Connection, which is comprised of:
  - (a) Access Tandem switching;
  - (b) Tandem-Switched Transport Termination and Common Multiplexing;
  - (c) Tandem-Switched Transport – Facility.

Additional charges may be assessed by the third-party access tandem provider

(C)

Transmittal # 19

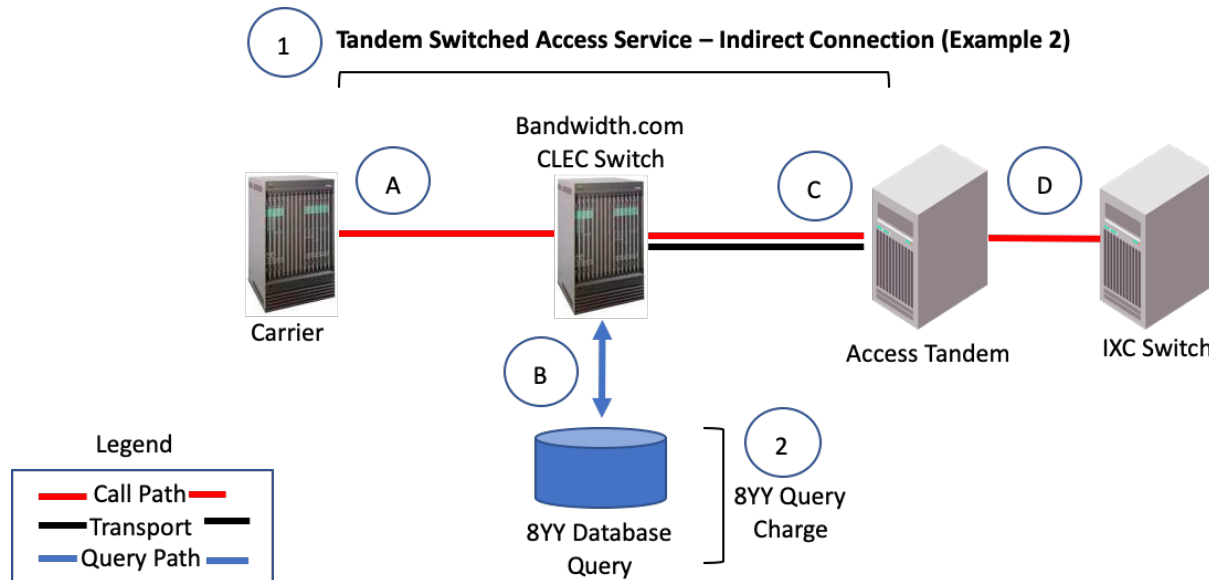
Issued: September 22, 2023

Effective: October 7, 2023

By: Jeffrey A. Hoffman, Chief Financial Officer  
900 Main Campus Drive, Suite 100  
Raleigh, NC 27606

## INTERSTATE SWITCHED ACCESS SERVICES TARIFF

## SECTION 5 – SWITCHED ACCESS RATES, (Cont'd.)

**Originating Call Flow:**

- A. 3<sup>rd</sup> Party Carrier routes long distance call to Bandwidth.com CLEC switch.
- B. If 8YY call, Bandwidth.com CLEC looks up IXC that should receive the call in 8YY Database.
- C. Call is routed from Bandwidth.com CLEC switch to Third-Party Access Tandem over shared transport.
- D. Third-Party Access Tandem provider routes call to IXC.

**Originating Charges:**

Bandwidth.com CLEC charges Customer for:

- (1) Tandem Switching Access Service – Indirect Connection, which is comprised of:
  - (a) Access Tandem switching;
  - (b) Tandem-Switched Transport Termination and Common Multiplexing;
  - (c) Tandem-Switched Transport – Facility.
  - (d) Common Trunk Port
- (2) 8YY Query Charge, as applicable.

Additional charges may be assessed by the third-party access tandem provider.

(C)

**Terminating Call Flow:**

- D. IXC delivers terminating long distance call to Third-Party Access Tandem.
- C. Third-Party Access Tandem provider routes call over shared transport to Bandwidth.com CLEC switch.
- A. Call is routed from Bandwidth.com CLEC switch to 3<sup>rd</sup> Party Carrier.

**Terminating Charges:**

Bandwidth.com CLEC charges Customer for:

- (1) Tandem Switching Access Service – Indirect Connection, which is comprised of:
  - (a) Access Tandem Switching
  - (b) Tandem-Switched Transport Termination and Common Multiplexing;
  - (c) Tandem-Switched Transport – Facility.

Additional charges may be assessed by the third-party access tandem provider

(C)

Transmittal # 19

Issued: September 22, 2023

Effective: October 7, 2023

By: Jeffrey A. Hoffman, Chief Financial Officer  
900 Main Campus Drive, Suite 100  
Raleigh, NC 27606

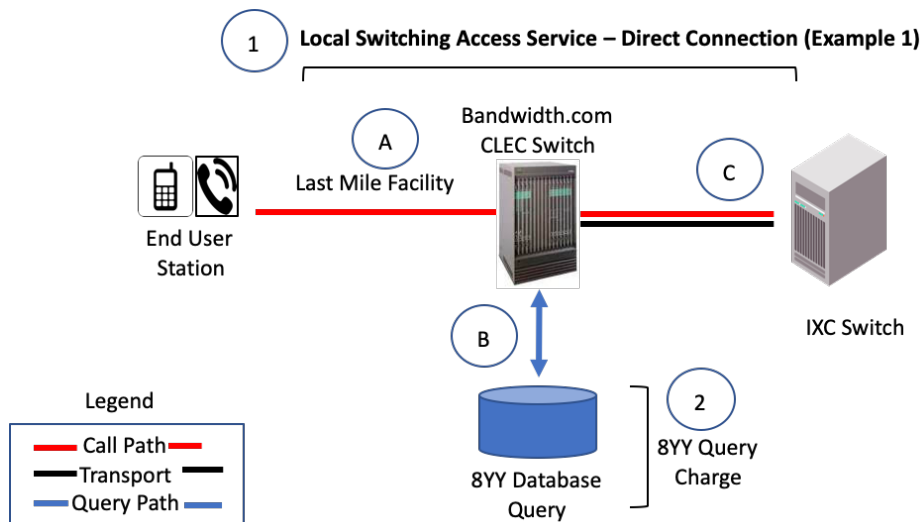


## INTERSTATE SWITCHED ACCESS SERVICES TARIFF

## SECTION 5 – SWITCHED ACCESS RATES, (Cont'd.)

**Local Switching Access Service – Direct Connection**

Section 5.2.2 (Sections 5.2.4 and 5.2.5 also apply to Originating 8YY Calls)

**Originating Call Flow:**

- A. End User places a long distance call that is routed to Bandwidth.com CLEC switch.
- B. If 8YY call, Bandwidth.com CLEC looks up IXC that should receive the call in 8YY Database.
- C. Call is routed from Bandwidth.com CLEC switch to IXC switch via dedicated transport.

**Originating Charges:**

Bandwidth.com CLEC charges Customer for:

- (1) Local Switching Access Service – Direct Connection, which is comprised of:
  - (a) End Office Switching.
  - (b) Dedicated Trunk Port (ICB) or Common Trunk Port
- (2) 8YY Query Charge, as applicable.

(C)

**Terminating Call Flow:**

- C. IXC delivers terminating long distance call to Bandwidth.com CLEC switch via dedicated transport
- A. Call is routed from Bandwidth.com CLEC switch to Bandwidth.com CLEC –End User.

**Terminating Charges:**

CLEC charges Customer for:

- (1) Local Switching Access Service – Direct Connection, which is comprised of:
  - (a) End Office Switching;
  - (b) Dedicated Trunk Port (ICB) or Common Trunk Port;

(C)

Transmittal # 19

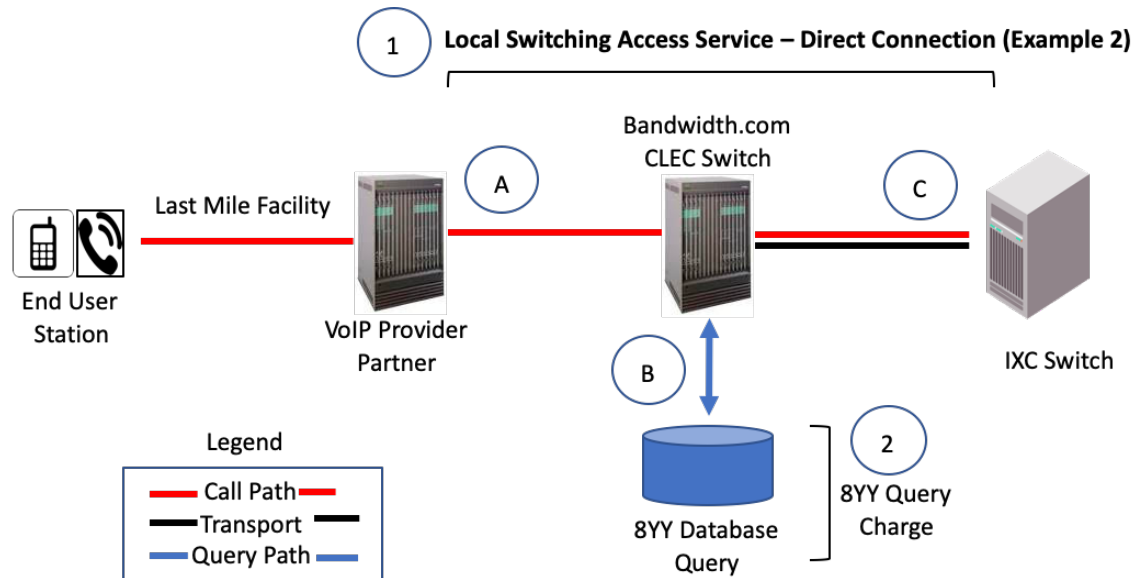
Issued: September 22, 2023

Effective: October 7, 2023

By: Jeffrey A. Hoffman, Chief Financial Officer  
900 Main Campus Drive, Suite 100  
Raleigh, NC 27606

## INTERSTATE SWITCHED ACCESS SERVICES TARIFF

## SECTION 5 – SWITCHED ACCESS RATES, (Cont'd.)

**Originating Call Flow:**

- A. End User places a long distance call that is routed to Bandwidth.com CLEC switch.
- B. If 8YY call, Bandwidth.com CLEC looks up IXC that should receive the call in 8YY Database.
- C. Call is routed from Bandwidth.com CLEC switch to IXC switch via dedicated transport.

**Originating Charges:**

Bandwidth.com CLEC charges Customer for:

- (1) Local Switching Access Service – Direct Connection, which is comprised of:
  - (a) End Office Switching,
  - (b) Dedicated Trunk Port (ICB) or Common Trunk Port.
- (2) 8YY Query Charge, as applicable.

(C)

**Terminating Call Flow:**

- C. IXC delivers terminating long distance call to Bandwidth.com CLEC switch via dedicated transport
- A. Call is routed from Bandwidth.com CLEC switch to VoIP Provider Partner

**Terminating Charges:**

CLEC charges Customer for:

- (1) Local Switching Access Service – Direct Connection, which is comprised of:
  - (a) End Office Switching;
  - (b) Dedicated Trunk Port (ICB) or Common Trunk Port.

(C)

Transmittal # 19

Issued: September 22, 2023

Effective: October 7, 2023

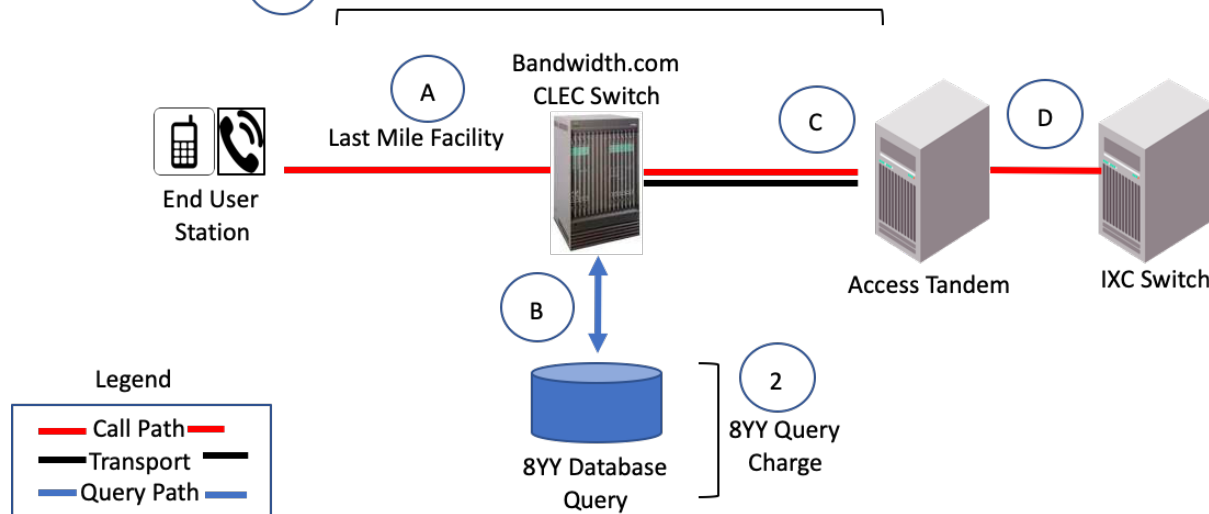
By: Jeffrey A. Hoffman, Chief Financial Officer  
900 Main Campus Drive, Suite 100  
Raleigh, NC 27606

## INTERSTATE SWITCHED ACCESS SERVICES TARIFF

## SECTION 5 – SWITCHED ACCESS RATES, (Cont'd.)

**Local Switching Access Service – Indirect Connection**

Section 5.2.3 (Sections 5.2.4 and 5.2.5 also apply to Originating 8YY Calls)

**1 Local Switching Access Service – Indirect Connection (Example 1)****Originating Call Flow:**

- A End User places a long distance call that is routed to Bandwidth.com CLEC switch.  
 B. If 8YY call, Bandwidth.com CLEC looks up IXC that should receive the call in 8YY Database.  
 C. Call is routed from Bandwidth.com CLEC switch to Third-Party Access Tandem over shared transport.  
 D. Third-Party Access Tandem provider routes call to IXC.

**Originating Charges:**

Bandwidth.com CLEC charges Customer for:

- (1) Local Switching Access Service – Indirect Connection, which is comprised of:  
 (a) End Office Switching;  
 (b) Common Trunk Port;  
 (c) Tandem-Switched Transport Termination and Common Multiplexing;  
 (d) Tandem-Switched Transport - Facility.  
 (2) 8YY Query Charge, as applicable.

Additional charges may be assessed by the third-party access tandem provider.

(C)

**Terminating Call Flow:**

- D. IXC delivers terminating long distance call to Third-Party Access Tandem.  
 C. Third-Party Access Tandem provider routes call over shared transport to Bandwidth.com CLEC switch.  
 A. Call is routed from Bandwidth.com CLEC switch to Bandwidth.com CLEC End User.

**Terminating Charges:**

CLEC charges Customer for:

- (1) Local Switching Access Service – Indirect Connection, which is comprised of:  
 (a) End Office Switching;  
 (b) Common Trunk Port;  
 (c) Tandem-Switched Transport Termination and Common Multiplexing;  
 (d) Tandem-Switched Transport - Facility

Additional charges may be assessed by the third-party access tandem provider.

(C)

Transmittal # 19

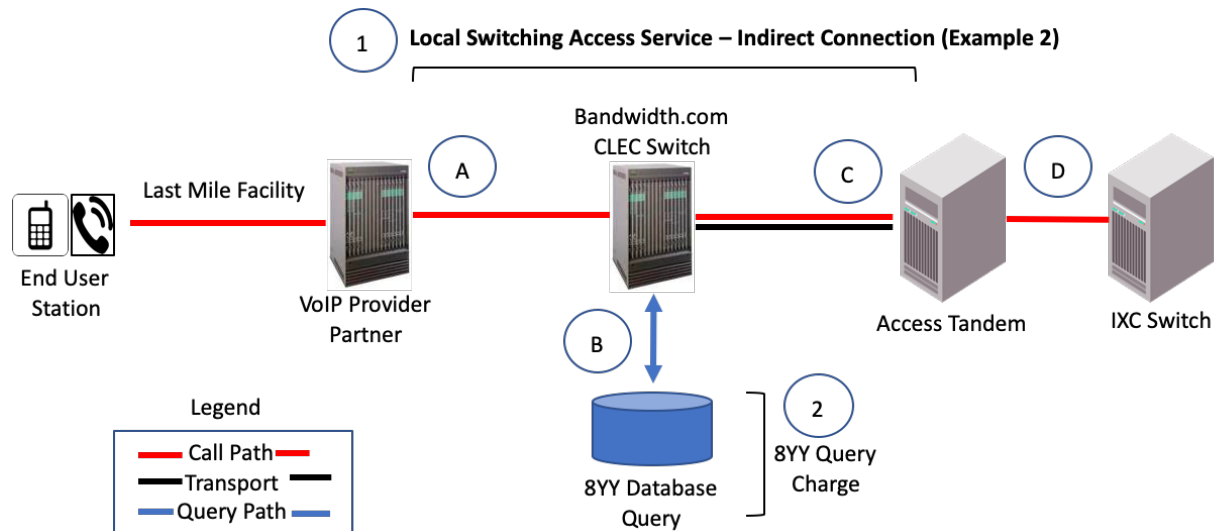
Issued: September 22, 2023

Effective: October 7, 2023

By: Jeffrey A. Hoffman, Chief Financial Officer  
 900 Main Campus Drive, Suite 100  
 Raleigh, NC 27606

## INTERSTATE SWITCHED ACCESS SERVICES TARIFF

## SECTION 5 – SWITCHED ACCESS RATES, (Cont'd.)

**Originating Call Flow:**

- A. End User places a long distance call that is routed to Bandwidth.com CLEC switch.  
 B. If 8YY call, Bandwidth.com CLEC looks up IXC that should receive the call in 8YY Database.  
 C. Call is routed from Bandwidth.com CLEC switch to Third-Party Access Tandem over shared transport.  
 D. Third-Party Access Tandem provider routes call to IXC.

**Originating Charges:**

Bandwidth.com CLEC charges Customer for:

- (1) Local Switching Access Service – Indirect Connection, which is comprised of:  
 (a) End Office Switching;  
 (b) Common Trunk Port;  
 (c) Tandem-Switched Transport Termination and Common Multiplexing;  
 (d) Tandem-Switched Transport - Facility.  
 (2) 8YY Query Charge, as applicable.  
 Additional charges may be assessed by the third-party access tandem provider.

(C)

**Terminating Call Flow:**

- D. IXC delivers terminating long distance call to Third-Party Access Tandem.  
 C. Third-Party Access Tandem provider routes call over shared transport to Bandwidth.com CLEC switch.  
 A. Call is routed from Bandwidth.com CLEC switch to VoIP Provider Partner.

**Terminating Charges:**

CLEC charges Customer for:

- (1) Local Switching Access Service – Indirect Connection, which is comprised of:  
 (a) End Office Switching;  
 (b) Common Trunk Port;  
 (c) Tandem-Switched Transport Termination and Common Multiplexing;  
 (d) Tandem-Switched Transport - Facility

Additional charges may be assessed by the third-party access tandem provider

(C)

Transmittal # 19

Issued: September 22, 2023

Effective: October 7, 2023

By: Jeffrey A. Hoffman, Chief Financial Officer  
 900 Main Campus Drive, Suite 100  
 Raleigh, NC 27606