

FACILITIES FOR INTERSTATE ACCESS

Issued: February 2, 2021

Transmittal No. 3

Effective: February 17, 2021

CHECK SHEET

This tariff includes the Title Page through Page 173. All pages in this are effective as of the date shown on the respective page(s). Original and revised pages as named below comprise all changes from the original tariff and are currently in effect as of the date indicated above.

PAGE	Number of Revision except as indicated		PAGE	Number of Revision except as indicated		PAGE	Number of Revision except as indicated
Title	1 st Revised		83	1 st Revised		148	1 st Revised
1	2 nd Revised	*	84	1 st Revised		149	1 st Revised
8	1 st Revised	*	85	1 st Revised		150	1 st Revised
9	1 st Revised	*	103	1 st Revised		151	1 st Revised
10	1 st Revised		104	1 st Revised		152	1 st Revised
11	1 st Revised	*	105	1 st Revised		152.1	Original
12	1 st Revised		106	1 st Revised		153	1 st Revised
13	1 st Revised		112	1 st Revised		154	1 st Revised
14	1 st Revised	*	116	1 st Revised		155	1 st Revised
33	1 st Revised		124	1 st Revised		155.1	Original
41	1 st Revised		125	1 st Revised		156	1 st Revised
58	1 st Revised	*	126	1 st Revised		157	1 st Revised
59	1 st Revised	*	127	1 st Revised		158	1 st Revised
60	1 st Revised	*	128	1 st Revised		159	1 st Revised
61	1 st Revised	*	129	1 st Revised		160	1 st Revised
62	1 st Revised	*	130	1 st Revised		161	1 st Revised
63	1 st Revised	*	131	1 st Revised		162	1 st Revised
66	1 st Revised		132	1 st Revised		163	1 st Revised
67	1 st Revised		133	1 st Revised		164	1 st Revised
67.1	1 st Revised	*	134	1 st Revised		164.1	Original
67.2	Original	*	136	1 st Revised		165	1 st Revised
67.3	Original	*	137	1 st Revised		166	1 st Revised
69	1 st Revised		138	1 st Revised		167	1 st Revised
70	1 st Revised		140	1 st Revised		168	1 st Revised
71	1 st Revised		140.1	Original		169	1 st Revised
72	1 st Revised		141	1 st Revised		170	1 st Revised
73	1 st Revised		141.1	Original		171	1 st Revised
74	1 st Revised		142	1 st Revised		172	1 st Revised
75	1 st Revised		142.1	Original			
76	1 st Revised		143	1 st Revised			
77	1 st Revised		144	1 st Revised			
78	1 st Revised		146.1	Original			
79	1 st Revised		146.2	Original			
80	1 st Revised		146.3	Original			
81	1 st Revised		146.4	Original			
82	1 st Revised		147	1 st Revised			

* - Indicates pages included with this filing.

FACILITIES FOR INTERSTATE ACCESS

Issued: February 2, 2021

Transmittal No. 3

Effective: February 17, 2021

SECTION 1 - TECHNICAL TERMS AND ABBREVIATIONS, (CONT'D.)

1.1 Definitions, (Cont'd.)

Direct-Trunked Transport: The term “Direct-Trunked Transport” means dedicated transport from the POI(s) to the Access Tandem. Direct-Trunked Transport rates are not assessed when the POI and Access Tandem are in the same building.

(N)
|
(N)

Disconnect: To render inoperable or to disable circuitry thus preventing outgoing and incoming toll or transit communications service.

End Office (or End Office Switch): A switching system, switching system office, or serving wire center or its equivalent, established to provide local exchange service, Access Services, or the equivalent of local exchange and/or Access Services.

End Office Switching (or End Office Local Switching): The switching system or call switching activity (or equivalent system or activity) used by the Company or by a Provider to originate or terminate local exchange service or Access Services (or the equivalent of local exchange or Access Service) for the benefit of End-Users that generate and/or receive toll calls.

End-User (or End-User Customer): Any customer of a telecommunications service or communications service that is not a carrier except that a carrier shall be deemed to be an “End-User” when such carrier uses a telecommunications service for administrative purposes and a person or entity that offers telecommunications services exclusively as a reseller shall be deemed to be an “End-User” if all resale transmissions offered by such reseller originate on the premises of such reseller. An End-User may include a resident, business or enhanced service provider including, but not limited to, conference calling provider, Voice over Internet Protocol (“VoIP”) service provider, or other entity.

Entrance Facility: A Transport Facility that provides dedicated transport between the customer’s Point of Termination and the Company’s POI. The Entrance Facility rate is assessed whether the customer Point of Termination and the POI are in separate locations or in the same building. The Entrance Facility rate is in addition to the rates assessed for Direct Trunked Transport.

(N)
|
|
(N)

Exchange Carrier: Any person, partnership, association, joint-stock company, trust, governmental entity or corporation engaged in the provision of local exchange telephone service, or its functional equivalent.

Full Service Relief Metropolitan Statistical Area (MSA): MSA’s in which the relevant ILEC has qualified for Phase II pricing flexibility for all elements of service, i.e., local channels (channel terminations) between LEC end offices and customer (End-User) premises; entrance facilities; dedicated interoffice facilities; local channels (channel terminations) between an interexchange carriers’ point of interconnection and a serving wire center.

(C)

Holiday: For the purposes of this tariff recognized holidays are New Year's Day, Memorial Day, Independence Day, Labor Day, Thanksgiving Day, and Christmas Day.

FACILITIES FOR INTERSTATE ACCESS

Issued: February 2, 2021

Transmittal No. 3

Effective: February 17, 2021

SECTION 1 - TECHNICAL TERMS AND ABBREVIATIONS, (CONT'D.)

1.1 Definitions, (Cont'd.)

Hub POI – A POI that is used for the purpose of exchanging traffic associated with more than one LATA. (N)
(N)

Incomplete: Any call where voice transmission between the Calling and Called station is not established.

Individual Case Basis (ICB): A service arrangement in which the regulations, rates and charges are developed based on the specific circumstances of the Customer's situation.

Interexchange Carrier (IXC) or Interexchange Common Carrier: Any person, partnership, association, joint-stock company, trust, governmental entity or corporation engaged in interstate or foreign communication for hire by wire or radio between two or more exchanges.

InterMTA (Major Trading Area): For purposes of this tariff, InterMTA refers to telecommunications traffic exchanged between a LEC and a CMRS, PCS or wireless provider that originates and terminates in different Major Trading Areas as used by the FCC to define coverage for certain services.

Internet Protocol (IP): The method or protocol by which data is sent from one computer to another on the Internet.

Internet Protocol (IP) Signaling: A packet data-oriented protocol used for communicating call signaling information.

FACILITIES FOR INTERSTATE ACCESS

Issued: February 2, 2021

Transmittal No. 3

Effective: February 17, 2021

SECTION 1 - TECHNICAL TERMS AND ABBREVIATIONS, (CONT'D.)

1.1 Definitions, (Cont'd.)

Percent Interstate Usage (PIU): The proportion of Switched Access minutes of use allocated to the interstate jurisdiction.

Point of Interconnection (POI): An Interconnection with the Company where the customer may interconnect with the Company's network, by way of Entrance Facilities, for the purpose of exchanging traffic in that LATA; while a Hub POI is a POI used for the purpose of exchanging traffic associated with more than one LATA. The POI denotes the first Company location to which customer facilities are connected by way of such Entrance Facilities.

(C)
|
|
|
(C)

Premises: The space occupied by an individual Customer in a building, in adjoining buildings occupied entirely by that Customer, or on contiguous property occupied by the Customer (except railroad right-of-way) not separated by a public thoroughfare.

Provider: A Carrier, Common Carrier, CMRS service provider, Exchange Carrier, Local Exchange Carrier, telecommunications provider, communications service provider, enhanced service provider, VoIP service provider, or any other entity that originates or terminates toll or transit calls that traverse the Company's network.

Rate: Money, charge, fee or other recurring assessment billed to Customers for services or equipment.

Recurring Charges: The monthly charges to the Customer for services, facilities and equipment, which continue for the agreed upon duration of the service.

FACILITIES FOR INTERSTATE ACCESS

Issued: February 2, 2021

Transmittal No. 3

Effective: February 17, 2021

SECTION 1 - TECHNICAL TERMS AND ABBREVIATIONS, (CONT'D.)

1.2 Abbreviations

ANI - Automatic Number Identification

BNA - Billing Name and Address

EUCL - End-User Common Line

FCC - Federal Communications Commission ("Commission")

FGD - Feature Group D

ICB - Individual Case Basis

IXC - Interexchange Carrier

JIP - Jurisdiction Information Parameter

LATA - Local Access Transport Area

PIC - Primary Interexchange Carrier

PICC - Presubscribed Interexchange Carrier Charge

PIU - Percent Interstate Usage

POI - Point of Interconnection

STP - Signaling Transfer Point

V&H - Vertical and Horizontal Coordinates

(C)

FACILITIES FOR INTERSTATE ACCESS

Issued: February 2, 2021

Transmittal No. 3

Effective: February 17, 2021

SECTION 3 - DESCRIPTION OF SERVICE, (CONT'D.)

3.4 Access Services Offerings

Where technically and economically feasible, the Company offers local exchange telecommunications services to business Customers pursuant to contractual arrangements, as well as Access Services set forth in this tariff to Customers. For Customers having unique circumstances, the Company may, where possible, be able to offer certain Access Services on a nondiscriminatory Individual Case Basis ("ICB"). The Customer's total monthly use of the Company's service is charged at the applicable rates of this tariff, in addition to any monthly recurring charges. All facilities installed for provisioning Access Services are bi-directional, two-way in nature, unless otherwise agreed in writing between the Customer and the Company. The Customer ordering Access Services shall accept additional facilities to accommodate actual and projected traffic volumes based on reasonable fill rates. The Customer must be authorized to send traffic to third-party interconnected Providers prior to delivering traffic to such parties through the use of Access Services, and the Customer is responsible for compliance with all third-party traffic termination arrangements including primary toll carrier agreements and optional or extended calling area plans and the like. In the event that the Customer sends traffic through the Company to a Provider for which the Customer does not have a traffic exchange agreement, then the Customer will indemnify the Company against any and all charges levied by such third-party interconnected Provider, including but not limited to any charges related to such traffic and any attorney's fees and expenses. The Company will bill its respective charges to the Customer and, pursuant to 3.4.2.G below, the Company will not be required to function as a billing intermediary or clearinghouse. The Terminating Provider shall not bill the Company for terminating any of the Customer's traffic, and the relationship between the Customer and the Terminating Provider will remain between the Customer and the Terminating Provider without involving the Company except to the extent that the Company's network is used by the Customer to pass the Customer's traffic to the Terminating Provider, and then the only role of the Company is to pass such traffic to the Terminating Provider on behalf of Customer without other Company involvement of any form. The presence or absence of Calling Party Number (CPN) in the Customer's call flow does not have any effect on the existence of the sole relationship between the Customer and the Terminating Provider without the Company involvement other than to forward the call to the Terminating Provider.

(D)
|
(D)

Access Service usage is assessed based on each minute of use. Originating 8YY Access Service includes the delivery of 8YY traffic that is initiated by a Wireless Provider's End User and is delivered from a CMRS Mobile Telephone Switching Office to the Company switch and then to a Customer. The Company will charge for all elements of service that it provides in routing such traffic.

FACILITIES FOR INTERSTATE ACCESS

Issued: February 2, 2021

Transmittal No. 3

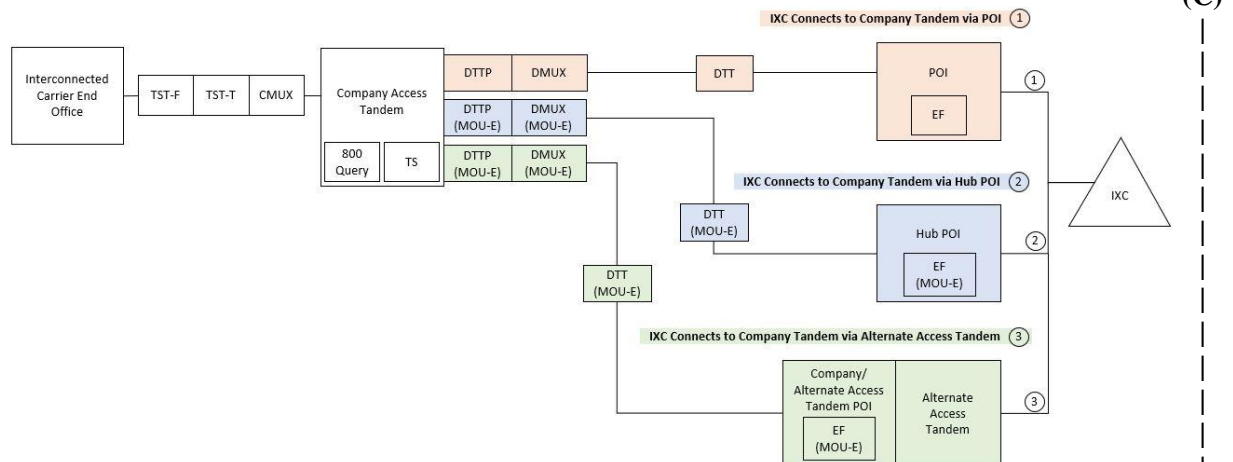
Effective: February 17, 2021

SECTION 3 - DESCRIPTION OF SERVICE, (CONT'D.)

3.4 Access Services Offerings

Access Services Diagrams

The following Access Services Diagrams depict the functions and corresponding rate elements that may be applied in various scenarios, depending on the services and functions provided by the Company or its VoIP partner(s). Not all elements apply in all situations and the application of a given rate element may depend on the application of that element under the benchmark rate. For example the Tandem Switched Transport – Termination (TST-T) function occurs at both ends of the transport connection, but whether the rate element is applied per channel or per termination, depends on the local exchange carrier whose rate serves as the benchmark.



Element	Element Description
800 Query	8YY Database Query Charge (where it occurs)
TST-T	Tandem Switched Transport – Termination
TST-F	Tandem Switched Transport - Facility
CMUX	Common Transport Multiplexing
TS	Tandem Switching
DTTP	Dedicated Tandem Trunk Port
DMUX	Dedicated Multiplexing
DTT	Direct-Trunked Transport – Fixed and Per Mile
EF	Entrance Facility

Issued: February 2, 2021
Transmittal No. 3
Effective: February 17, 2021

3.4 Access Services Offerings, (Cont'd.)

(D)

FACILITIES FOR INTERSTATE ACCESS

Issued: February 2, 2021

Transmittal No. 3

Effective: February 17, 2021

SECTION 3 - DESCRIPTION OF SERVICE, (CONT'D.)

3.4 Access Services Offerings, (Cont'd.)

[Reserved for Future Use]

(D)

(D)

FACILITIES FOR INTERSTATE ACCESS

Issued: February 2, 2021

Transmittal No. 3

Effective: February 17, 2021

SECTION 3 – DESCRIPTION OF SERVICE, (CONT'D.)

3.4 Access Services Offerings, (Cont'd.)

3.4.1 Switched Access Service

Switched Access Service is available to a Customer for its use in furnishing service to an End-User, as those terms are defined in 1.1, above. Switched Access Service involves the use of common originating, terminating, switching and transport facilities. Switched Access Services provides the ability to originate or terminate calls between an End User's Station, and other Stations on the PSTN.

A. There are several rate categories which apply to Switched Access Service:

- Tandem Switched Access Originating
- Tandem Switched Access Terminating
- Local Switching – Originating or Terminating

The Company provides originating and terminating switched access service based on aggregate traffic volumes from the following rate categories:

1. Tandem Switched Access (“Switched Transport”)

The Switched Transport rate category includes the charges related to the transmission and termination of facilities between the Customer designated premises (Point of Interconnection) and Company's access tandem, and between the Company's access tandem, and the end office switch(es) where the Customer's traffic is switched to originate or terminate the Customer's communications, or any functional equivalent of the incumbent local exchange carrier Switched Transport access service provided by the Company via analogous facilities.

(C)

Switched Transport may incorporate a dedicated or common path between the Customer's Point of Interconnection and the Company's switch or a common transmission path from Exchange Carrier(s) switch(es) connected to the Company's switch. The charges that apply, where applicable, to Switched Transport include Tandem Switching, Tandem Common Trunk Port, Tandem Multiplexing, Tandem Switched Transport – Termination, and Tandem Switched Transport – Facility.

(C)

The terminating Switched Transport rate schedules are bifurcated into “Affiliated Price Cap LEC End Office” and “All Other End Offices” rates, which includes 3rd party traffic Terminating Switched Transport rates only apply with calls are terminated to a 3rd Party and not the Company switch

FACILITIES FOR INTERSTATE ACCESS

Issued: February 2, 2021

Transmittal No. 3

Effective: February 17, 2021

SECTION 3 - DESCRIPTION OF SERVICE, (CONT'D.)

3.4 Access Services Offerings, (Cont'd)

3.4.1 Switched Access Service, (Cont'd)

A. Switched Access Originating or Terminating, (Cont'd)

1. Switched Transport, (Cont'd.)

The Tandem Switching rate element applies to the function of switching call traffic between interconnecting carrier switches. The Tandem Switching rate applies when the Company routes originating or terminating traffic between a Customer and another carrier's end office switch or its equivalent. Where access traffic is routed directly between a carrier Customer and an End-User, the Company will also function as an end office provider rather than just an Access Tandem provider.

The Tandem Common Trunk Port element applies to the termination of Common Transport trunk facilities at the Tandem office. The Tandem Common Trunk Port rate is assessed on a per minute of use basis for all originating and terminating access minutes utilizing tandem routing functions.

Tandem Multiplexing allows Customers to interconnect facilities of one capacity or bandwidth with access tandems to facilities of a different capacity or bandwidth from that of the interconnecting facility. The Tandem Multiplexing rate will be assessed to all minutes of use between the Company's tandem and the Customer's Point of Interconnection.

(C)

FACILITIES FOR INTERSTATE ACCESS

Issued: February 2, 2021

Transmittal No. 3

Effective: February 17, 2021

SECTION 3 - DESCRIPTION OF SERVICE, (CONT'D.)

3.4 Access Services Offerings, (Cont'd)

3.4.8 Application of Originating Charges When Connecting via Optional Hub POI or Alternate Access Tandem

(MN)

- A. When originating traffic¹ via a Hub POI or Alternate Access Tandem, monthly recurring rates for dedicated services (Dedicated Tandem Trunk Port, Dedicated Multiplexing, Direct-Trunked Transport, and Entrance Facility) will be assessed on a minute-of-use equivalent (MOU-E) basis using the monthly recurring rates identified herein with a monthly usage factor of 216,000 MOU per DS1-equivalent circuit per month. These MOU-E rates apply irrespective of whether the dedicated services are supported by time division multiplexing (TDM) or session internet protocol (SIP) technology. Mileage-sensitive dedicated services rate components will be calculated using actual miles between 1) the Hub POI or the Alternate Access Tandem and 2) the Company Access Tandem, not to exceed 10 miles. MOU-E rates for dedicated services will be based on the rates associated with the relevant end office associated with the origination/termination of traffic rather than the physical location of the Hub POI. Hub POIs are offered at the Company's discretion. The Company must agree in advance to a particular Hub POI arrangement and the LATAs with which traffic can be exchanged via such Hub POI arrangement.
- B. Dedicated Tandem Trunk Port MOU-E rates will be derived from the Company tariffed rate per DS1 port; Dedicated Multiplexing MOU-E rates will be derived from the Company tariffed rate per multiplexing arrangement (DS3/DS1 or equivalent); and Entrance Facility and Direct-Trunked Transport MOU-E rates will be derived from the Company tariffed rate per DS3.

(MN)

Information previously located on this page is now found on page 67.3

¹ When two-way dedicated access services are provided, the rate application described in 3.4.8 will apply to both originating terminating traffic.

(N)

FACILITIES FOR INTERSTATE ACCESS

Issued: February 2, 2021

Transmittal No. 3

Effective: February 17, 2021

SECTION 3 - DESCRIPTION OF SERVICE, (CONT'D.)

3.4 Access Services Offerings, (Cont'd)

3.4.8 Application of Access Charges When Connecting via Optional Hub POI or Alternate Access Tandem, (Cont'd)

C. Rate Application Example

(N)

MOU-E rates applicable to access minutes originating from an End User in Miami, FL, that traverse a Company Access Tandem by way of a Hub POI or Alternate Access Tandem (SIP or TDM):

EF (MOU-E) per DS3 Entrance Facility (4.2.1(A)) divided by 28 (DS1s per DS3) divided by 216,000 (MOU per DS1 per month conversion)

DTT-fixed (MOU-E) per DS3 DTT-fixed (4.2.1(B)) divided by 28 (DS1s per DS3) divided by 216,000 (MOU per DS1 per month conversion)

DTT-per mile (MOU-E) per DS3 DTT-per mile (4.2.1(C)) divided by 28 (DS1s per DS3) divided by 216,000 (MOU per DS1 per month conversion) multiplied by applicable mileage

DMUX (MOU-E) per multiplexing arrangement (4.2.1(D)) divided by 28 (DS1s per DS3) divided by 216,000 (MOU per DS1 per month conversion)

DTTP (MOU-E) per DS1 DTTP (4.2.1(F)) divided by 216,000 (MOU per DS1 per month conversion)

(N)

FACILITIES FOR INTERSTATE ACCESS

Issued: February 2, 2021

Transmittal No. 3

Effective: February 17, 2021

SECTION 3 - DESCRIPTION OF SERVICE, (CONT'D.)

3.5 Miscellaneous Functions and Services

(M)

3.5.1 Access Order Change

An Access Order Change is a change in the Customer's service requested subsequent to installation.

3.5.2 Return Check Charge

If payment for service is made by a check, draft, or similar instrument (collectively "Check") that is returned to the Company unpaid by a bank or another financial institution for any reason, the Company may bill the Customer a returned check charge. In addition, the Customer may be required to replace the returned Check with a payment in cash or equivalent to cash, such as cashier's check, certified check or money order.

3.5.3. Reconnection

Reconnection charges occur where Access Services to an existing Customer has been discontinued for proper cause, and the Customer desires to resume service with the Company. If service has been discontinued for proper cause and where a Customer desires reconnection, the Customer will be charged a fee to defray the cost of restoring service to the Customer.

(M)

Information found on this page was previously located on page 67.1.