

INTERSTATE SWITCHED ACCESS SERVICES TARIFF

CHECK SHEET

Page 1 to 47, inclusive of this tariff are effective as of the date shown.

SHEET	REVISION		SHEET	REVISION	
Title	1 st Revised		39.8	6 th Revised	*
1	10 th Revised	*	39.9	6 th Revised	*
1.1	Original		39.9.1	2 nd Revised	
3	1 st Revised		39.10	6 th Revised	*
4	2 nd Revised	*	39.11	6 th Revised	*
4.1	2 nd Revised	*	39.12	6 th Revised	*
5	2 nd Revised	*	39.13	6 th Revised	*
5.1	2 nd Revised	*	40	10 th Revised	*
5.2	2 nd Revised	*	40.0.1	4 th Revised	*
7	1 st Revised		40.0.2	3 rd Revised	*
10	1 st Revised		40.1	9 th Revised	*
11	1 st Revised		40.2	9 th Revised	*
22	1 st Revised	*	40.2.1	4 th Revised	*
26	1 st Revised		40.2.2	4 th Revised	*
27	Original		40.2.2.1	2 nd Revised	*
30	1 st Revised	*	40.2.3	4 th Revised	*
33	1 st Revised		40.2.4	5 th Revised	*
33.1	Original		40.3	2 nd Revised	
34	2 nd Revised	*	40.4	1 st Revised	
35	2 nd Revised	*	40.5	1 st Revised	
36	3 rd Revised	*	40.6	3 rd Revised	*
36.0.1	Original	*	40.6.1	Original	*
36.0.2	Original	*	40.7	2 nd Revised	*
36.1	3 rd Revised	*	40.7.1	Original	*
36.1.1	1 st Revised	*	40.8	2 nd Revised	*
36.2	1 st Revised	*	40.9	1 st Revised	*
37	4 th Revised	*	40.10	1 st Revised	*
38	1 st Revised		40.11	1 st Revised	*
39	10 th Revised	*	41	1 st Revised	*
39.1	6 th Revised	*			
39.2	6 th Revised	*			
39.3	6 th Revised	*			
39.4	6 th Revised	*			
39.5	6 th Revised	*			
39.6	6 th Revised	*			
39.7	6 th Revised	*			
39.7.1	2 nd Revised	*			

* New or Revised Page.

Transmittal # 12

Issued: March 24, 2020

Effective: April 8, 2020

By: Jeffrey A. Hoffman, Chief Financial Officer
900 Main Campus Drive, Suite 100
Raleigh, NC 27606

INTERSTATE SWITCHED ACCESS SERVICES TARIFF

SECTION 1 - DEFINITIONS

Certain terms used generally throughout this tariff for the Access Services of this Company are defined below.

8YY Data Base Access Service - The term "8YY Data Base Access Service" denotes a toll-free originating Trunk-side Access Service when the 8YY Service Access Code (i.e., 800, 822, 833, 844, 855, 866, 877, or 888 as available) is used.

Access Service - Access to the network of an Interexchange Carrier for the purpose of originating or terminating communications. (T)

Access Service Request (ASR) or Service Order: The industry service order format used by Access Service Customers and access providers as agreed to by the Ordering and Billing Forum.

ANI - Automatic Number Identification; the codes transmitted between carriers that indicate the telephone number of the originating line.

Authorized user - A person, firm, corporation or other entity that either is authorized by the Customer to use Access Services or is placed in a position by the Customer, either through acts or omissions, to use Access Service.

B8ZS - Bipolar with 8-Zero Substitution - a line coding technique which permits DSO and DS1 transmission with 15 consecutive zeros. B8ZS support 64 KBPS clear channel transmission.

BNA - Billing Name and Address; the customer of record and billing address associated with an originating ANI.

Carrier or Common Carrier - See Interexchange Carrier or Exchange Carrier.

CCS/SS7 - Common Channel Switching/Signaling System 7; a switching network and transmission control standard.

Channel - A communications path between two or more points.

Commission - The Federal Communications Commission.

Company - Bandwidth.com CLEC, LLC, issuer of this tariff.

Certain material previously found on this Sheet is now located on Sheet 4.1.

Transmittal # 12

Issued: March 24, 2020

Effective: April 8, 2020

By: Jeffrey A. Hoffman, Chief Financial Officer
900 Main Campus Drive, Suite 100
Raleigh, NC 27606

INTERSTATE SWITCHED ACCESS SERVICES TARIFF

SECTION 1 - DEFINITIONS, (Cont'd.)

Customer - The person, firm, corporation or other entity that orders Service and is responsible for the payment of charges and for compliance with the Company's tariff regulations. The Customer could be an End User, interexchange carrier, a wireless provider, other telecommunications carriers or providers originating or terminating VoIP-PSTN Access Traffic or any other carrier authorized to operate.

DNAL - Dedicated Network Access Line; a point to point circuit that provides interconnection to the CCS network on a dedicated Signal Transfer Point (STP) port. The DNAL provides the connection from the Customer designated premises to the Company STP.

DS0 - Digital Signal Level 0; a dedicated full duplex digital channel with line speeds of 2.4, 4.8, 9.36, 19.2, 56 or 64 Kbps.

DS1 - Digital Signal Level 1; a dedicated, high capacity, full duplex channel with a line speed of 1.544 Mbps isochronous serial data having a line signal format of either Alternate Mark Inversion (AMI) or Bipolar with 8 Zero Substitution (B8ZS) and either Superframe (D4) or Extended Superframe (ESF) formats. DS1 Service has the equivalent capacity of 24 Voice Grade or DSO services.

DS3- Digital Signal Level 3; a dedicated, high capacity, full duplex channel with a line speed of 44.736 Mbps isochronous serial data having a line code of bipolar with three zero substitution (B3ZS). Equivalent capacity of 28 DS 1 Services.

End User - Any individual, association, corporation, governmental agency or any other entity subscribing to telecommunications or VoIP service provided by an Exchange Carrier or VoIP Provider Partner where such individual association, corporation, governmental agency or other entity is not an Interexchange Carrier, Local Exchange Carrier, Wireless Carrier or other entity otherwise utilizing the Company's service to provide a telecommunications service (as defined by applicable law) to its own customers. (C)

Exchange - A group of lines in a unit generally smaller than a LATA established in the tariff of an incumbent local exchange carrier for the administration of communications service in a specified area.

Exchange Carrier - Any individual, partnership, association, joint-stock company, trust, governmental entity or corporation engaged in the provision of local exchange telephone service.

Facility (or Facilities) - Any item or items of communications plant or equipment used to provide service or connect to the Company.

FGD - Feature Group D; a trunk side switched access connection to the public switched network.

FOC - Final Order Confirmation; the point prior to the start of installation when the order is confirmed.

Transmittal # 12

Issued: March 24, 2020

Effective: April 8, 2020

By: Jeffrey A. Hoffman, Chief Financial Officer
900 Main Campus Drive, Suite 100
Raleigh, NC 27606

INTERSTATE SWITCHED ACCESS SERVICES TARIFF

SECTION 1 – DEFINITIONS, (Cont'd.)

Gbps - Gigabits per second; billions of bits per second.

GTA - Global Title Address; software instructions in the Signal Transfer Point (STP) that identify the signaling message destination.

ICB - Individual Case Basis; standard tariff pricing is not available. Each installation is individually priced and negotiated with the customer.

Interexchange Carrier (IXC) or Interexchange Common Carrier - Any individual, partnership, association, joint-stock company, trust, governmental entity or corporation engaged in state or foreign communication for hire by wire or radio, between two or more exchanges.

Kbps - Kilobits per second; 1000s of bits per second.

LATA – A local access and transport area established pursuant to the Modification of Final Judgment entered by the United States District Court for the District of Columbia in Civil Action No. 82-0192 for the provision and administration of communications services.

LEC - Local Exchange Company

Line Information Data Base (LIDB) - The data base which contains base information such as telephone numbers, calling card numbers and associated billed number restriction data used in connection with the validation and billing of calls.

Local Switching Center - The switching system that provides service to the End User.

(C)

Local Traffic - Traffic is "Local Traffic" under this tariff if (i) the call originates and terminates in the same exchange area; or (ii) the call originates and terminates within different exchanges that share a common mandatory local calling area.

Mbps - Megabits per second; millions of bits per second.

Meet Point - A point of interconnection that is not an end office or tandem.

Meet Point Billing - The arrangement through which multiple Exchange Carriers involved in providing Access Service bill services on a proportional basis under their respective tariffs.

Certain material now found on this page was previously located on Page 4
Certain material previously found on this page is now located on Page 5.1.

Transmittal # 12

Issued: March 24, 2020

Effective: April 8, 2020

By: Jeffrey A. Hoffman, Chief Financial Officer
900 Main Campus Drive, Suite 100
Raleigh, NC 27606

INTERSTATE SWITCHED ACCESS SERVICES TARIFF

SECTION 1 – DEFINITIONS, (Cont'd.)

Non-Recurring Charges - One-time initial charges for services or facilities, including but not limited to charges for construction, installation, or special fees, for which the Customer becomes liable at the time service is ordered.

Premises - The space occupied by a Customer or Authorized User in a building or buildings or on contiguous property (except railroad rights-of-way, etc.).

OPC - Originating Point Code; a field within a signaling message that identifies the originating network Signaling Node.

POP - The physical location of an interexchange carrier's facilities.

Presubscription - An arrangement whereby an End User or other user of the Company's services may select and designate to the Company an Interexchange Carrier (IXC) or Carriers it wishes to access, without an Access Code, for completing both intraLATA toll calls and/or interLATA calls. The selected IXC(s) are referred to as the End User's or user's Primary Interexchange Carrier (PIC).

Query - An inquiry to a database to obtain information, processing instructions or service data.

Recurring Charges - The monthly charges to the Customer for services, facilities and equipment, which continue for the agreed upon duration of the service.

Signaling Point of Interface - The Customer designated location where the SS7 signaling information is exchanged between the Company and the Customer.

SSP - Service Switching Point; an end office or tandem switch equipped with signaling link hardware and software to perform Signal Point functions. SSPs participate in processing a CCS/SS7 call by requesting and responding to call processing instructions issued by the SCP.

Station - Refers to telephone, conference bridge, or IP compatible customer premise equipment from or to which calls are placed. (C)

STP - Signal Transfer Point; a specialized packet switch that routes and translates signaling messages in the CCS network.

Tandem Switching – Tandem switching is a communication switching function that provides a concentration and distribution function for originating or terminating traffic between Local Switching Centers. (N)
|
(N)

TDM – Time Division Multiplexing – a method of transmitting and receiving voice signals over the Public Switched Telephone Network (PSTN).

Terminal Equipment - Telecommunications devices, apparatus and associated wiring on the Customer- designated premises.

Transmittal # 12

Issued: March 24, 2020

Effective: April 8, 2020

By: Jeffrey A. Hoffman, Chief Financial Officer
900 Main Campus Drive, Suite 100
Raleigh, NC 27606

INTERSTATE SWITCHED ACCESS SERVICES TARIFF

SECTION 1 – DEFINITIONS, (Cont'd.)

Trunk - A communications path connecting two switching systems in a network, used in the establishment of an end-to-end connection.

VOIP-PSTN Access Traffic - VoIP-PSTN Access Traffic is the access traffic exchanged between the Company and the Customer in time division multiplexing ("TDM") format that originates and/or terminates in Internet protocol ("IP") format. Traffic originates and/or terminates in IP format if it originates from and/or terminates to an end user customer of a service that requires Internet protocol compatible customer premises equipment.

VoIP Service – Transmission of communication by aid of wire, cable, radio, or other like connection using Voice Over Internet Protocol that is originated or terminated in Internet Protocol (IP) format. VoIP services are those services that require the use of IP compatible customer premises equipment. (T)

VoIP Provider Partner – A provider of VoIP Service to End Users where the Company provides the connectivity and supporting functions for PSTN interconnection and/or number resources. A VoIP Provider Partner may or may not provide a physical connection to the last-mile facilities used to serve an End User. (N)
|
|
(N)

Wireless Provider - Any carrier authorized to operate as a provider of cellular, personal communications, paging or other form of wireless transmission.

Transmittal # 12

Issued: March 24, 2020

Effective: April 8, 2020

By: Jeffrey A. Hoffman, Chief Financial Officer
900 Main Campus Drive, Suite 100
Raleigh, NC 27606

INTERSTATE SWITCHED ACCESS SERVICES TARIFF

SECTION 2 – RULES AND REGULATIONS, (Cont'd.)

2.4 Customer Equipment and Channels, (Cont'd.)

2.4.4 Inspections, (Cont'd.)

- B. If the protective requirements for Customer-provided equipment are not being complied with, the Company may take such action as it deems necessary to protect its facilities, equipment, and personnel. The Company will notify the Customer promptly if there is any need for further corrective action. Within ten days of receiving this notice, the Customer must take this corrective action and notify the Company of the action taken. If the Customer fails to do this, the Company may take whatever additional action is deemed necessary, including the suspension of service, to protect its facilities, equipment, and personnel from harm. The Company will, upon request 24 hours in advance, provide the Customer with a statement of technical parameters that the Customer's equipment must meet.

2.5 Payment Arrangements

2.5.1 Payment for Service

The Customer is responsible for payment of all charges for services and facilities provided by the Company to the Customer or its Joint or Authorized Users.

(C)

Taxes - The Customer is responsible for the payment of any sales, use, gross receipts, excise, access or other local, state and federal taxes, charges or surcharges (however designated) excluding taxes on the Company's net income imposed on or based upon the provision, sale or use of Access Services. All such taxes shall be separately designated on the Company's invoices.

Transmittal # 12

Issued: March 24, 2020

Effective: April 8, 2020

By: Jeffrey A. Hoffman, Chief Financial Officer
900 Main Campus Drive, Suite 100
Raleigh, NC 27606

INTERSTATE SWITCHED ACCESS SERVICES TARIFF

SECTION 2 – RULES AND REGULATIONS, (Cont'd.)

2.7 Transfers and Assignments

Neither the Company nor the Customer may assign or transfer its rights or duties in connection with the services and facilities provided by the Company without the written consent of the other party, except that the Company may assign its rights and duties (a) to any subsidiary, parent Company or affiliate of the Company (b) pursuant to any sale or transfer of substantially all the assets of the Company; or pursuant to any financing, merger or reorganization of the Company.

2.8 Notices and Communications

- 2.8.1 Delivery of calls to or acceptance of calls from the Company's End User Stations over Company-switched local exchange services constitutes an order by the Customer to purchase Switched Access Services as described herein. Similarly the selection by a Company's End User of the Customer as the presubscribed IXC constitutes an order of switched access by the Customer. In these cases, an invoice will be the first communication from the Company to the Customer. In other instances a Service Order may be used. (C) (T)
- 2.8.2 The Customer shall designate on the Service Order an address to which the Company shall mail or deliver all notices and other communications, except that the Customer may also designate a separate address to which the Company's bills for service shall be mailed.
- 2.8.3 The Company shall designate on the Service Order an address to which the Customer shall mail or deliver all notices and other communications, except that the Company may designate a separate address, on each bill for service, to which the Customer shall mail payment on that bill
- 2.8.4 All notices or other communications required to be given pursuant to this tariff shall be in writing. Notices and other communications of either party, and all bills mailed by the Company, shall be presumed to have been delivered to the other party on the third business day following deposit of the notice, communication, or bill with the U.S. Mail or a private delivery service, prepaid and properly addressed, or when actually received or refused by the addressee, whichever occurs first.
- 2.8.5 The Company or the Customer shall advise the other party of any changes to the addresses designated for notices, other communications or billing, by following the procedures for giving notice set forth herein.

Transmittal # 12

Issued: March 24, 2020

Effective: April 8, 2020

By: Jeffrey A. Hoffman, Chief Financial Officer
900 Main Campus Drive, Suite 100
Raleigh, NC 27606

INTERSTATE SWITCHED ACCESS SERVICES TARIFF

SECTION 4 – SWITCHED ACCESS SERVICE

4.1 General

Switched Access Service involves the use of common originating, terminating, switching and transport facilities. Switched Access Services provides the ability to originate or terminate calls between an End User's Station, and other Stations on the PSTN.

(C)
|
(C)

Rates and charges are set forth in Section 5. The application of rates for Switched Access Service is described in Section 5.

4.2 Provision and Description of Switched Access Service Arrangements

4.2.1 Feature Group Access

Feature Group ("FG") Access provides trunk-side access to Tandem Switches and Local Switching Center switches, for the Customer's use in originating and terminating communications. Basic FG Access service will be provided with Multi-Frequency In-Band Signaling (SS7 is also available, where capabilities exist).

(C)

All traffic is routed to and from the Company's Local Switching Center via the Customer's tandem provider or via end office trunking, where available.

(T)
(T)

4.2.2 Manner of Provision

Trunks used for Switched Access Service may be configured for one-way (either originating only or terminating only) or for two-way directionality.

Transmittal # 12

Issued: March 24, 2020

Effective: April 8, 2020

By: Jeffrey A. Hoffman, Chief Financial Officer
900 Main Campus Drive, Suite 100
Raleigh, NC 27606

INTERSTATE SWITCHED ACCESS SERVICES TARIFF

SECTION 4 – SWITCHED ACCESS SERVICE, (Cont’d.)

4.2 Provision and Description of Switched Access Service Arrangements, (Cont’d.)

4.2.3 Call Types

The following Switched Access Service call types are available:

- A. Originating FG Access
- B. Originating 800 FG Access
- C. Terminating FG Access

4.2.4 Originating FG Access

The access code for FG Access switching is a uniform access code of the form 1+ or 011+ or 101XXXX. For 101XXXX dialing a single access code will be the assigned number of all FG Access provided to the Customer by the Company. When the access code is used, FG Access switching also provides for dialing the digit 0 for access to the Customer's operator service, 911 for access to emergency service, and/or the end-of-dialing digit (#) for cut through access to the Customer's premises. The Company will provide originating FG access consistent with dialing parity obligations.

4.2.5 Originating 800 FG Access

800 Data Base Access Service is a service utilizing originating Trunk side Switched Access Service. When an 8YY + NXX + XXXX call is originated by an End User, VoIP Provider Partner's End User or other users of the Company's services, the Company will perform Customer identification based on screening of the full ten digits of the 8YY number to determine the Customer location to which the call is to be routed. This Tariff applies only to interstate 8YY calls originated by End Users and other users of the Company's services served by the Company.

(C)

(C)

4.2.6 Terminating FG Access

FG Access, when used in the terminating direction, may only be used to access End Users who are subscribing to the Company's Local Exchange Services or other users of the Company's services. Calls in the terminating direction will not be completed to 950-0XXX or 950-1XXX access codes, local operator assistance (0- and 0+), Directory Assistance, (411 or 555-1212) service codes 611 and 911 and 101XXXX access codes.

Transmittal # 12

Issued: March 24, 2020

Effective: April 8, 2020

By: Jeffrey A. Hoffman, Chief Financial Officer
900 Main Campus Drive, Suite 100
Raleigh, NC 27606

INTERSTATE SWITCHED ACCESS SERVICES TARIFF

SECTION 5 – SWITCHED ACCESS RATES

5.1 General

This section contains the specific regulations governing the rates and charges that apply for Switched Access Services:

The Company offers Tandem Switching Access Services, Local Switching Access Service – Direct Connection, and Local Switching Access Service – Indirect Connection.

There are three types of rates and charges that apply to Switched Access Service:

- Non-Recurring Charges: One-time charges that apply for a specific work activity.
- Recurring Charges: Fixed charges apply each month and depend on the number and type of facilities in place.
- Usage Charges: Charges that are applied on a per access minute basis. Usage rates are accumulated over a monthly period.

5.1.1 The Company will assess and collect switched access rate elements under this tariff for access services, regardless of whether the Company itself delivers such traffic to the called party's Station or delivers the call to the called party's Station via contractual or other arrangements with a VoIP Provider Partner that does not itself seek to collect switched access charges for the same traffic. The Company will not charge for functions not performed by the Company or its VoIP Provider Partner. For purposes of this provision, functions provided by the Company or its VoIP Provider Partner as part of transmitting telecommunications between designated points using, in whole or in part, technology other than TDM transmission in a manner that is functionally equivalent to a service offered by a local exchange carrier shall constitute the performance of the functionally equivalent traditionally applicable carrier access service and their related charges. (C)

5.1.2 Identification and rating of VOIP-PSTN Access Traffic. (C)

5.1.2.1 In the absence of an agreement between the Company and the Customer specifying the treatment of VoIP-PSTN Traffic, all Access traffic will be treated as VoIP-PSTN Access traffic and assessed switched access charges at the rates set forth in Section 5.4 of this tariff. (C)

Transmittal # 12

Issued: March 24, 2020

Effective: April 8, 2020

By: Jeffrey A. Hoffman, Chief Financial Officer
900 Main Campus Drive, Suite 100
Raleigh, NC 27606

INTERSTATE SWITCHED ACCESS SERVICES TARIFF

SECTION 5 – SWITCHED ACCESS RATES

5.1 General (cont'd.)

5.1.2 Identification and rating of VOIP-PSTN Access Traffic (cont'd.)

5.1.2.2. Calculation and application of Facilities-Based VoIP Usage Factors to VOIP-PSTN Access Traffic

Facilities-based (“FB”) refers to VOIP-PSTN Access Traffic that is originated or terminated over a physical connection to the last-mile facilities used to serve an End User. Company will assess switched access charges based upon a FB percent usage factor (“FBU”) that reflects the percentage amount of VOIP-PSTN Access Traffic that travels over a physical connection to the last-mile facilities used to serve an End User. When Customer orders a service from this tariff, the customer shall be responsible for the payment of Access Service charges that reflect Company’s FBU. If the Company or its VoIP Provider Partner provides a physical connection to the last-mile facilities used to serve an End User, the Local Switching Access Service rates will apply. If the Company or its VoIP Provider Partner does not provide a physical connection to the last-mile facilities used to serve the End User, the Tandem Switching Access Service rates will apply.

FCC Form 477 Instructions collect information about two types of interconnected VoIP subscriptions. Those instructions require providers of interconnected VoIP service to report subscriptions as “Over-the-top Subscriptions” if the provider (including affiliates) does not sell to the end user the high capacity connection that terminates at the end user’s premises and delivers the interconnected VoIP service. If a subscription is not an Over-the-top Subscription, providers report it as “All Other Subscriptions”.

The Company FBU shall be based on information such as the number of the Company’s and its VoIP Provider Partner’s reported “All Other Subscriptions” to interconnected VoIP service in the state (e.g. as reported on FCC Form 477), traffic studies, actual call detail or other relevant and verifiable information. The Company shall retain the call detail, work papers, and information used to develop the FBU factors for a minimum of one year.

The Company may update the FBU factors quarterly or annually. The revised FBU factors will serve as the basis for future billing and will be effective on the bill date of each such month and shall serve as the basis for subsequent monthly billing until superseded by new FBU factors. No prorating or back billing will be done based on the updated FBU factors.

(N)

(N)

Transmittal # 12

Issued: March 24, 2020

Effective: April 8, 2020

By: Jeffrey A. Hoffman, Chief Financial Officer
900 Main Campus Drive, Suite 100
Raleigh, NC 27606

INTERSTATE SWITCHED ACCESS SERVICES TARIFF

SECTION 5 – SWITCHED ACCESS RATES

5.1 General (cont'd.)

5.1.2 Identification and rating of VOIP-PSTN Access Traffic (cont'd.)

5.1.2.2. Calculation and application of Facilities-Based VoIP Usage Factors to VOIP-PSTN Access Traffic

The Company may choose to provide credits based on the FBU factors on a quarterly basis until such time as the Company can implement billing system modifications to apply the FBU factors in monthly invoices.

Not more than once in any year, the Customer may request from the Company an overview of the process used to determine the FBU factors and other information used to determine the FBU factors in order to validate the FBU factors supplied. The Company shall reasonably supply the requested data and information within 30 days of the Customer's request.

(N)

(N)

Transmittal # 12

Issued: March 24, 2020

Effective: April 8, 2020

By: Jeffrey A. Hoffman, Chief Financial Officer
900 Main Campus Drive, Suite 100
Raleigh, NC 27606

 INTERSTATE SWITCHED ACCESS SERVICES TARIFF

SECTION 5 – SWITCHED ACCESS RATES

5.2 Rate Categories

5.2.1 Tandem Switching Access Service

A. Direct Connection (Originating and Terminating)

Tandem Switching Access Service – Direct Connection is an access service providing transmission and tandem switching between the Customer designated premises and the Company switch(es) where the Customer's traffic is switched from or to an entity other than an End User, including a (i) VoIP Provider Partner that does not provide the last-mile connection to the End User Station or (ii) a Carrier, for purposes of originating or terminating the Customer's communications, and where the Customer's switch is connected directly to the Company's switch. The following rate elements will apply to Tandem Switching Access Service – Direct Connection. Access Tandem Switching, Tandem-Switched Transport Termination, Tandem-Switched Transport – Facility, Common Multiplexing, Dedicated Trunk Port or Common Trunk Port. For originating 8YY calls, the Toll-Free 8YY Data Base Query charge will also apply. The third-party access tandem provider may apply additional charges for switching and transport functions performed by that provider. For Terminating calls, Access Tandem Switching only applies when calls are terminated to a 3rd Party and not the Company switch. With Direct Connection, Customer is responsible for ordering or providing dedicated facilities or reasonable and appropriate bandwidth to the Company's point of presence in the access tandem serving area. Where applicable, the Dedicated Trunk Port charge will be applied on an Individual Case Basis. If Customer prefers to connect via IP, the Common Trunk Port charge will apply. The application of access charges to Tandem Switching Access Service is illustrated in diagrams at the end of this Section 5.

(C)
|
(C)

(C)
(C)
|
|
|
|
|
|
|
|
|
(C)

Transmittal # 12

Issued: March 24, 2020

Effective: April 8, 2020

By: Jeffrey A. Hoffman, Chief Financial Officer
900 Main Campus Drive, Suite 100
Raleigh, NC 27606

SECTION 5 – SWITCHED ACCESS RATES

B. Indirect Connection (Originating and Terminating)

(D) ————— (D)

By: Jeffrey A. Hoffman, Chief Financial Officer
900 Main Campus Drive, Suite 100
Raleigh, NC 27606

INTERSTATE SWITCHED ACCESS SERVICES TARIFF

SECTION 5 – SWITCHED ACCESS RATES

5.2 Rate Categories, (Cont'd.)

5.2.2 Local Switching Access Service - Direct Connection (Originating and Terminating)

Local Switching Access Service - Direct Connection is an access service providing the Customer connections to and use of end office switching equipment for the origination or termination of the Customer's communications to the Company's End Users or End Users of a VoIP Provider Partner that provides the last mile connection to the End User. Charges for Local Switching Access Service – Direct Connection include the following rate elements: End Office Switching , Common Trunk Port, Tandem Switched Transport Termination and Common Multiplexing, and Tandem Switched Transport Facility. The third-party access tandem provider may apply additional charges for switching and transport functions performed by that provider.

(C)

|

|

|

|

|

(C)

With Direct Connection, Customer is responsible for ordering or providing dedicated facilities or reasonable and appropriate bandwidth to the Company's point of presence in the access tandem serving area. Where applicable, the Dedicated Trunk Port charge will be applied on an Individual Case Basis. If Customer prefers to connect via IP, the Common Trunk Port charge will apply. The application of access charges to Local Switching Access Service is illustrated in diagrams at the end of this Section 5.

(N)

|

|

|

(N)

Transmittal # 12

Issued: March 24, 2020

Effective: April 8, 2020

By: Jeffrey A. Hoffman, Chief Financial Officer
900 Main Campus Drive, Suite 100
Raleigh, NC 27606

INTERSTATE SWITCHED ACCESS SERVICES TARIFF

SECTION 5 – SWITCHED ACCESS RATES, (Cont’d.)

5.2 Rate Categories, (Cont’d.)

5.2.3 Local Switching Access Service - Indirect Connection (Originating and Terminating)

Local Switching Access Service - Indirect Connection is an access service providing the Customer use of end office switching equipment for the origination or termination of the Customer’s communications to the Company’s End Users or End Users of a VoIP Provider Partner that provides the last-mile connection to the End User as well as transport to or from the Customer’s tandem provider. Charges for Local Switching Access Service - Indirect Connection include the following rate elements: End Office Switching, Common Trunk Port, Tandem Switched Transport Termination and Common Multiplexing, and Tandem Switched Transport Facility. For originating 8YY calls, the Toll-Free 8YY Data Base Query charge will also apply. The third-party access tandem provider may apply additional charges for switching and transport functions performed by that provider. The application of access charges to Local Switching Access Service is illustrated in diagrams at the end of this Section 5.

(C)

(C)

(N)

(N)

5.2.4 Toll-Free 8YY Data Base Query

The Toll-Free 8YY Data Base Query Charge, will apply for each Toll-Free 8YY call query received at the Company’s (or its provider’s) Toll-Free 8YY database.

5.2.5 Toll-Free 8YY Switched Access Service

The Toll-Free 8YY Switched Access Service is an originating access service in which the Company delivers Toll Free calls to Customers.

5.2.6 Optional Features

Other optional features may be available on an Individual Case Basis (ICB).

Transmittal # 12

Issued: March 24, 2020

Effective: April 8, 2020

By: Jeffrey A. Hoffman, Chief Financial Officer
900 Main Campus Drive, Suite 100
Raleigh, NC 27606

 INTERSTATE SWITCHED ACCESS SERVICES TARIFF

SECTION 5 – SWITCHED ACCESS RATES, (Cont'd.)

5.4 Rates and Charges

5.4.1 AT&T Territory

A. Illinois, Indiana, Michigan, Ohio and Wisconsin

	<u>Originating</u>	<u>Terminating</u>	(C)
Tandem-Switched Transport - Termination, per minute	\$0.000103	\$0.000103	
Tandem-Switched Transport - Facility, per minute per mile	\$0.000013	\$0.000013	
Access Tandem Switching, per minute	\$0.001084	\$0.001084	
CMUX, per minute	\$0.000015	\$0.000015	
CTP, per minute, all zones	\$0.000371	\$0.000000	
End Office Switching, per minute, all zones	\$0.003116	\$0.000000	(C)

B. Arkansas, Kansas, Missouri, Oklahoma, Texas, all zones

	<u>Originating</u>	<u>Terminating</u>	(C)
Tandem-Switched Transport - Termination, per minute	\$0.000053	\$0.000053	
Tandem-Switched Transport - Facility, per minute per mile	\$0.000003	\$0.000003	
Access Tandem Switching, per minute	\$0.000288	\$0.000288	
CMUX, per minute	\$0.000047	\$0.000047	
CTP, per minute	\$0.000900	\$0.000000	
End Office Switching, per minute	\$0.002563	\$0.000000	(C)

Transmittal # 12

Issued: March 24, 2020

Effective: April 8, 2020

 By: Jeffrey A. Hoffman, Chief Financial Officer
 900 Main Campus Drive, Suite 100
 Raleigh, NC 27606

INTERSTATE SWITCHED ACCESS SERVICES TARIFF

SECTION 5 – SWITCHED ACCESS RATES, (Cont'd.)

5.4 Rates and Charges, (Cont'd.)

5.4.1 AT&T Territory, (Cont'd.)

C. California

	<u>Originating</u>	<u>Terminating</u>	(C)
Tandem-Switched Transport - Termination, per minute	\$0.000075	\$0.000075	
Tandem-Switched Transport - Facility, per minute per mile	\$0.000015	\$0.000015	
Access Tandem Switching, per minute	\$0.000440	\$0.000440	
CMUX, per minute	\$0.000098	\$0.000098	
CTP, per minute, all zones	\$0.004696	\$0.000000	
End Office Switching, per minute	\$0.002620	\$0.000000	(C)

D. Nevada

	<u>Originating</u>	<u>Terminating</u>	(C)
Tandem-Switched Transport - Termination, per minute	\$0.000120	\$0.000120	
Tandem-Switched Transport - Facility, per minute per mile	\$0.000008	\$0.000008	
Access Tandem Switching, per minute	\$0.001062	\$0.001062	
CMUX, per minute	\$0.000018	\$0.000018	
CTP, per minute	\$0.001663	\$0.000000	
End Office Switching, per minute	\$0.001342	\$0.000000	(C)

Transmittal # 12

Issued: March 24, 2020

Effective: April 8, 2020

By: Jeffrey A. Hoffman, Chief Financial Officer
900 Main Campus Drive, Suite 100
Raleigh, NC 27606

INTERSTATE SWITCHED ACCESS SERVICES TARIFF

SECTION 5 – SWITCHED ACCESS RATES, (Cont'd.)

5.4 Rates and Charges, (Cont'd.)

5.4.1 AT&T Territory, (Cont'd.)

E. [Reserved for Future Use]

F. Alabama, Florida, Georgia, Kentucky, Louisiana, Mississippi, North Carolina,
South Carolina, Tennessee, all zones

	<u>Originating</u>	<u>Terminating</u>	(C)
Tandem-Switched Transport - Termination, per minute	\$0.000168	\$0.000168	
Tandem-Switched Transport - Facility, per minute per mile	\$0.000020	\$0.000020	
Access Tandem Switching, per minute	\$0.001145	\$0.001145	
CMUX, per minute	\$0.000380	\$0.000380	
CTP, per minute	\$0.000800	\$0.000000	
End Office Switching, per minute	\$0.002126	\$0.000000	(C)

Transmittal # 12

Issued: March 24, 2020

Effective: April 8, 2020

By: Jeffrey A. Hoffman, Chief Financial Officer
900 Main Campus Drive, Suite 100
Raleigh, NC 27606

INTERSTATE SWITCHED ACCESS SERVICES TARIFF

SECTION 5 – SWITCHED ACCESS RATES, (Cont'd.)

5.4 Rates and Charges, (Cont'd.)

5.4.2 CenturyLink QC (formerly Qwest) Territory

Arizona, Colorado, Idaho, Iowa, Minnesota, Montana, Nebraska, New Mexico, North
Dakota, Oregon, South Dakota, Utah, Washington and Wyoming

	<u>Originating</u>	<u>Terminating</u>	(C)
Tandem-Switched Transport - Termination, per minute	\$0.000240	\$0.000240	—
Tandem-Switched Transport - Facility, per minute, per mile	\$0.000030	\$0.000030	—
Access Tandem Switching, per minute	\$0.002252	\$0.002252	—
CMUX, per minute	\$0.000036	\$0.000036	—
CTP, per minute	\$0.000747	\$0.000000	—
End Office Switching, per minute	\$0.001974	\$0.000000	(C)

Transmittal # 12

Issued: March 24, 2020

Effective: April 8, 2020

By: Jeffrey A. Hoffman, Chief Financial Officer
900 Main Campus Drive, Suite 100
Raleigh, NC 27606

INTERSTATE SWITCHED ACCESS SERVICES TARIFF

SECTION 5 – SWITCHED ACCESS RATES, (Cont'd.)

5.4 Rates and Charges, (Cont'd.)

5.4.3 CenturyLink (formerly Embarq) Territory

A. Florida

	<u>Originating</u>	<u>Terminating</u>	(C)
Tandem-Switched Transport - Termination, per minute	\$0.000365	\$0.000365	
Tandem-Switched Transport - Facility, per minute per mile	\$0.000035	\$0.000035	
Access Tandem Switching, per minute	\$0.001197	\$0.001197	
CMUX, per minute	\$0.000327	\$0.000327	
CTP, per minute, all zones	\$0.000557	\$0.000000	
End Office Switching, per minute, all zones	\$0.003568	\$0.000000	(C)

B. Indiana, all zones

	<u>Originating</u>	<u>Terminating</u>	(C)
Tandem-Switched Transport - Termination, per minute	\$0.000253	\$0.000253	
Tandem-Switched Transport - Facility, per minute per mile	\$0.000040	\$0.000040	
Access Tandem Switching, per minute	\$0.000210	\$0.000210	
CMUX, per minute	\$0.000280	\$0.000280	
CTP, per minute	\$0.000406	\$0.000000	
End Office Switching, per minute	\$0.003747	\$0.000000	(C)

Transmittal # 12

Issued: March 24, 2020

Effective: April 8, 2020

By: Jeffrey A. Hoffman, Chief Financial Officer
900 Main Campus Drive, Suite 100
Raleigh, NC 27606

INTERSTATE SWITCHED ACCESS SERVICES TARIFF

SECTION 5 – SWITCHED ACCESS RATES, (Cont'd.)

5.4 Rates and Charges, (Cont'd.)

5.4.3 CenturyLink (formerly Embarq) Territory, (Cont'd.)

C. Kansas, Minnesota, Missouri, Nebraska, Texas, Wyoming

	<u>Originating</u>	<u>Terminating</u>	(C)
Tandem-Switched Transport - Termination, per minute	\$0.000218	\$0.000218	
Tandem-Switched Transport - Facility, per minute per mile	\$0.000020	\$0.000020	
Access Tandem Switching, per minute	\$0.000331	\$0.000331	
CMUX, per minute	\$0.000218	\$0.000218	
CTP, per minute, all zones	\$0.000498	\$0.000000	
End Office Switching, per minute	\$0.003983	\$0.000000	(C)

Transmittal # 12

Issued: March 24, 2020

Effective: April 8, 2020

By: Jeffrey A. Hoffman, Chief Financial Officer
900 Main Campus Drive, Suite 100
Raleigh, NC 27606

INTERSTATE SWITCHED ACCESS SERVICES TARIFF

SECTION 5 – SWITCHED ACCESS RATES, (Cont'd.)

5.4 Rates and Charges, (Cont'd.)

5.4.3 CenturyLink (formerly Embarq) Territory, (Cont'd.)

D. South Carolina, Tennessee, Virginia

	<u>Originating</u>	<u>Terminating</u>	(C)
Tandem-Switched Transport - Termination, per minute			
Zone 1	\$0.000252	\$0.000252	
Zone 2	\$0.000263	\$0.000263	
Zone 3	\$0.000290	\$0.000290	
Tandem-Switched Transport - Facility, per minute per mile			
Zone 1	\$0.000030	\$0.000030	
Zone 2	\$0.000031	\$0.000031	
Zone 3	\$0.000038	\$0.000038	
Access Tandem Switching, per minute			
Zone 1	\$0.000879	\$0.000879	
Zone 2	\$0.000949	\$0.000949	
Zone 3	\$0.001085	\$0.001085	
CMUX, per minute			
Zone 1	\$0.000254	\$0.000254	
Zone 2	\$0.000277	\$0.000277	
Zone 3	\$0.000296	\$0.000296	
CTP, per minute, all zones	\$0.000537	\$0.000000	
End Office Switching, per minute	\$0.003709	\$0.000000	(C)

E. North Carolina, all zones

	<u>Originating</u>	<u>Terminating</u>	(C)
Tandem-Switched Transport - Termination, per minute	\$0.000226	\$0.000226	
Tandem-Switched Transport - Facility, per minute per mile	\$0.000026	\$0.000026	
Access Tandem Switching, per minute	\$0.000639	\$0.000639	
CMUX, per minute	\$0.000755	\$0.000755	
CTP, per minute	\$0.000386	\$0.000000	
End Office Switching, per minute	\$0.003735	\$0.000000	(C)

Transmittal # 12

Issued: March 24, 2020

Effective: April 8, 2020

By: Jeffrey A. Hoffman, Chief Financial Officer
900 Main Campus Drive, Suite 100
Raleigh, NC 27606

INTERSTATE SWITCHED ACCESS SERVICES TARIFF

SECTION 5 – SWITCHED ACCESS RATES, (Cont'd.)

5.4 Rates and Charges, (Cont'd.)

5.4.3 CenturyLink (formerly Embarq) Territory, (Cont'd.)

F. Washington, Oregon

	<u>Originating</u>	<u>Terminating</u>	(C)
Tandem-Switched Transport - Termination, per minute			
Zone 1	\$0.000225	\$0.000225	
Zone 2	\$0.000255	\$0.000255	
Tandem-Switched Transport - Facility, per minute per mile			
Zone 1	\$0.000025	\$0.000025	
Zone 2	\$0.000035	\$0.000035	
Access Tandem Switching, per minute			
Zone 1	\$0.000150	\$0.000150	
Zone 2	\$0.000160	\$0.000160	
CMUX, per minute			
Zone 1	\$0.000225	\$0.000225	
Zone 2	\$0.000240	\$0.000240	
CTP, per minute, all zones	\$0.000428	\$0.000000	
End Office Switching, per minute	\$0.003770	\$0.000000	(C)

G. Ohio, all zones

	<u>Originating</u>	<u>Terminating</u>	(C)
Tandem-Switched Transport - Termination, per minute	\$0.000412	\$0.000412	
Tandem-Switched Transport - Facility, per minute per mile	\$0.000035	\$0.000035	
Access Tandem Switching, per minute	\$0.000124	\$0.000124	
CMUX, per minute	\$0.000405	\$0.000405	
CTP, per minute	\$0.000405	\$0.000000	
End Office Switching, per minute	\$0.003644	\$0.000000	(C)

Transmittal # 12

Issued: March 24, 2020

Effective: April 8, 2020

By: Jeffrey A. Hoffman, Chief Financial Officer
900 Main Campus Drive, Suite 100
Raleigh, NC 27606

INTERSTATE SWITCHED ACCESS SERVICES TARIFF

SECTION 5 – SWITCHED ACCESS RATES, (Cont'd.)

5.4 Rates and Charges, (Cont'd.)

5.4.3 CenturyLink (formerly Embarq) Territory, (Cont'd.)

H. Pennsylvania, New Jersey, all zones

	<u>Originating</u>	<u>Terminating</u>	(C)
Tandem-Switched Transport - Termination, per minute	\$0.000449	\$0.000449	
Tandem-Switched Transport - Facility, per minute per mile	\$0.000022	\$0.000022	
Access Tandem Switching, per minute	\$0.001438	\$0.001438	
CMUX, per minute	\$0.000469	\$0.000469	
CTP, per minute	\$0.000490	\$0.000000	
End Office Switching, per minute	\$0.003892	\$0.000000	(C)

Transmittal # 12

Issued: March 24, 2020

Effective: April 8, 2020

By: Jeffrey A. Hoffman, Chief Financial Officer
900 Main Campus Drive, Suite 100
Raleigh, NC 27606

 INTERSTATE SWITCHED ACCESS SERVICES TARIFF

SECTION 5 – SWITCHED ACCESS RATES, (Cont'd.)

5.4 Rates and Charges, (Cont'd.)

5.4.3 CenturyLink (formerly Embarq) Territory, (Cont'd.)

I. Nevada

	<u>Originating</u>	<u>Terminating</u>	(C)
Tandem-Switched Transport - Termination, per minute			
Zone 1	\$0.000324	\$0.000324	
Zone 2	\$0.000333	\$0.000333	
Zone 3	\$0.000369	\$0.000369	
Tandem-Switched Transport - Facility, per minute per mile			
Zone 1	\$0.000015	\$0.000015	
Zone 2	\$0.000017	\$0.000017	
Zone 3	\$0.000019	\$0.000019	
Access Tandem Switching, per minute			
Zone 1	\$0.002052	\$0.002052	
Zone 2	\$0.002106	\$0.002106	
Zone 3	\$0.002260	\$0.002260	
CMUX, per minute			
Zone 1	\$0.000092	\$0.000092	
Zone 2	\$0.000096	\$0.000096	
Zone 3	\$0.000103	\$0.000103	
CTP, per minute	\$0.000363	\$0.000000	
End Office Switching, per minute	\$0.004130	\$0.000000	(C)

Transmittal # 12

Issued: March 24, 2020

Effective: April 8, 2020

 By: Jeffrey A. Hoffman, Chief Financial Officer
 900 Main Campus Drive, Suite 100
 Raleigh, NC 27606

INTERSTATE SWITCHED ACCESS SERVICES TARIFF

SECTION 5 – SWITCHED ACCESS RATES, (Cont'd.)

5.4 Rates and Charges, (Cont'd.)

5.4.4 Verizon Territory

A. Massachusetts, New York / Connecticut and Rhode Island

	<u>Originating</u>	<u>Terminating</u>	(C)
Tandem-Switched Transport - Termination, per minute	\$0.000000	\$0.000000	
Tandem-Switched Transport - Facility, per minute per mile	\$0.000002	\$0.000002	
Access Tandem Switching, per minute	\$0.001574	\$0.001574	
CMUX, per minute	\$0.000000	\$0.000000	
CTP, per minute	\$0.001688	\$0.000000	
End Office Switching, per minute	\$0.002406	\$0.000000*	(C)

B. District of Columbia, Delaware, Maryland, Massachusetts, New Jersey, Pennsylvania (Verizon Pennsylvania) and Virginia (Verizon Virginia)

	<u>Originating</u>	<u>Terminating</u>	(C)
Tandem-Switched Transport - Termination, per minute	\$0.000000	\$0.000000	
Tandem-Switched Transport - Facility, per minute per mile	\$0.000002	\$0.000002	
Access Tandem Switching, per minute	\$0.001574	\$0.001574	
CMUX, per minute	\$0.000000	\$0.000000	
CTP, per minute	\$0.001688	\$0.000000	
End Office Switching, per minute	\$0.002406	\$0.000000*	(C)

*Rate is equivalent to Verizon's Composite Terminating End Office Charge.

Transmittal # 12

Issued: March 24, 2020

Effective: April 8, 2020

By: Jeffrey A. Hoffman, Chief Financial Officer
900 Main Campus Drive, Suite 100
Raleigh, NC 27606

INTERSTATE SWITCHED ACCESS SERVICES TARIFF

SECTION 5 – SWITCHED ACCESS RATES, (Cont'd.)

5.4 Rates and Charges, (Cont'd.)

5.4.4 Verizon Territory, (Cont'd.)

E. [Reserved for Future Use]

F. Pennsylvania (Verizon North), all zones

	<u>Originating</u>	<u>Terminating</u>	(C)
Tandem-Switched Transport - Termination, per minute	\$0.000000	\$0.000000	 -----
Tandem-Switched Transport - Facility, per minute per mile	\$0.000002	\$0.000002	
Access Tandem Switching, per minute	\$0.001574	\$0.001574	
CMUX, per minute	\$0.000000	\$0.000000	
CTP, per minute	\$0.001688	\$0.000000	
End Office Switching, per minute	\$0.002406	\$0.000000*	(C)

G. Virginia (Verizon South), all zones

	<u>Originating</u>	<u>Terminating</u>	(C)
Tandem-Switched Transport - Termination, per minute	\$0.000000	\$0.000000	 -----
Tandem-Switched Transport - Facility, per minute per mile	\$0.000002	\$0.000002	
Access Tandem Switching, per minute	\$0.001574	\$0.001574	
CMUX, per minute	\$0.000000	\$0.000000	
CTP, per minute	\$0.001688	\$0.000000	
End Office Switching, per minute	\$0.002406	\$0.000000*	(C)

*Rate is equivalent to Verizon's Composite Terminating End Office Charge.

Transmittal # 12

Issued: March 24, 2020

Effective: April 8, 2020

By: Jeffrey A. Hoffman, Chief Financial Officer
900 Main Campus Drive, Suite 100
Raleigh, NC 27606

INTERSTATE SWITCHED ACCESS SERVICES TARIFF

SECTION 5 – SWITCHED ACCESS RATES, (Cont'd.)

5.4 Rates and Charges, (Cont'd.)

5.4.5 Frontier Territory (Formerly Verizon)

A. California West Coast

	<u>Originating</u>	<u>Terminating</u>	(C)
Tandem-Switched Transport - Termination, per minute per termination	\$0.0000000	\$0.0000000	
Tandem-Switched Transport - Facility, per minute per mile	\$0.0000020	\$0.0000020	
Access Tandem Switching, per minute	\$0.0021296	\$0.0021296	
CMUX, per minute	\$0.0000000	\$0.0000000	
CTP, per minute	\$0.0007207	\$0.0000000	
End Office Switching, per minute	\$0.0019019	\$0.0000000	(C)

B. Idaho

	<u>Originating</u>	<u>Terminating</u>	(C)
Tandem-Switched Transport - Termination, per minute per termination	\$0.0000000	\$0.0000000	
Tandem-Switched Transport - Facility, per minute per mile	\$0.0000020	\$0.0000020	
Access Tandem Switching, per minute	\$0.0024000	\$0.0024000	
CMUX, per minute	\$0.0000000	\$0.0000000	
CTP, per minute	\$0.0006407	\$0.0000000	
End Office Switching, per minute	\$0.0013794	\$0.0000000	(C)

C. Illinois, all zones

	<u>Originating</u>	<u>Terminating</u>	(C)
Tandem-Switched Transport - Termination, per minute per termination	\$0.0000000	\$0.0000000	
Tandem-Switched Transport - Facility, per minute per mile	\$0.0000020	\$0.0000020	
Access Tandem Switching, per minute	\$0.0018445	\$0.0018445	
CMUX, per minute	\$0.0000000	\$0.0000000	
CTP, per minute	\$0.0006571	\$0.0000000	
End Office Switching, per minute	\$0.0019653	\$0.0000000	(C)

Transmittal # 12

Issued: March 24, 2020

Effective: April 8, 2020

By: Jeffrey A. Hoffman, Chief Financial Officer
900 Main Campus Drive, Suite 100
Raleigh, NC 27606

INTERSTATE SWITCHED ACCESS SERVICES TARIFF

SECTION 5 – SWITCHED ACCESS RATES, (Cont'd.)

5.4 Rates and Charges, (Cont'd.)

5.4.5 Frontier Territory (Formerly Verizon), (Cont'd.)

D. Indiana

	<u>Originating</u>	<u>Terminating</u>	(C)
Tandem-Switched Transport - Termination, per minute per termination	\$0.0000000	\$0.0000000	
Tandem-Switched Transport - Facility, per minute per mile	\$0.0000020	\$0.0000020	
Access Tandem Switching, per minute	\$0.0024000	\$0.0024000	
CMUX, per minute	\$0.0000000	\$0.0000000	
CTP, per minute	\$0.0007198	\$0.0000000	
End Office Switching, per minute	\$0.0020889	\$0.0000000	(C)

E. Michigan

	<u>Originating</u>	<u>Terminating</u>	(C)
Tandem-Switched Transport - Termination, per minute per termination	\$0.0000000	\$0.0000000	
Tandem-Switched Transport - Facility, per minute per mile	\$0.0000020	\$0.0000020	
Access Tandem Switching, per minute	\$0.0030000	\$0.0030000	
CMUX, per minute	\$0.0000000	\$0.0000000	
CTP, per minute	\$0.0005292	\$0.0000000	
End Office Switching, per minute	\$0.0014123	\$0.0000000	(C)

F. North Carolina, all zones

	<u>Originating</u>	<u>Terminating</u>	(C)
Tandem-Switched Transport - Termination, per minute per termination	\$0.0000000	\$0.0000000	
Tandem-Switched Transport - Facility, per minute per mile	\$0.0000020	\$0.0000020	
Access Tandem Switching, per minute	\$0.0016490	\$0.0016490	
CMUX, per minute	\$0.0000000	\$0.0000000	
CTP, per minute	\$0.0006170	\$0.0000000	
End Office Switching, per minute	\$0.0019548	\$0.0000000	(C)

Transmittal # 12

Issued: March 24, 2020

Effective: April 8, 2020

By: Jeffrey A. Hoffman, Chief Financial Officer
900 Main Campus Drive, Suite 100
Raleigh, NC 27606

INTERSTATE SWITCHED ACCESS SERVICES TARIFF

SECTION 5 – SWITCHED ACCESS RATES, (Cont'd.)

5.4 Rates and Charges, (Cont'd.)

5.4.5 Frontier Territory (Formerly Verizon), (Cont'd.)

G. Ohio

	<u>Originating</u>	<u>Terminating</u>	(C)
Tandem-Switched Transport - Termination, per minute per termination	\$0.0000000	\$0.0000000	—
Tandem-Switched Transport - Facility, per minute per mile	\$0.0000020	\$0.0000020	—
Access Tandem Switching, per minute	\$0.0024000	\$0.0024000	—
CMUX, per minute	\$0.0000000	\$0.0000000	—
CTP, per minute	\$0.0015479	\$0.0000000	—
End Office Switching, per minute	\$0.0022077	\$0.0000000	(C)

H. Oregon, all zones

	<u>Originating</u>	<u>Terminating</u>	(C)
Tandem-Switched Transport - Termination, per minute per termination	\$0.0000000	\$0.0000000	—
Tandem-Switched Transport - Facility, per minute per mile	\$0.0000020	\$0.0000020	—
Access Tandem Switching, per minute	\$0.0043318	\$0.0043318	—
CMUX, per minute	\$0.0000000	\$0.0000000	—
CTP, per minute	\$0.0007144	\$0.0000000	—
End Office Switching, per minute	\$0.0022081	\$0.0000000	(C)

I. South Carolina

	<u>Originating</u>	<u>Terminating</u>	(C)
Tandem-Switched Transport - Termination, per minute per termination	\$0.0000000	\$0.0000000	—
Tandem-Switched Transport - Facility, per minute per mile	\$0.0000020	\$0.0000020	—
Access Tandem Switching, per minute	\$0.0024000	\$0.0024000	—
CMUX, per minute	\$0.0000000	\$0.0000000	—
CTP, per minute	\$0.0005352	\$0.0000000	—
End Office Switching, per minute	\$0.0020150	\$0.0000000	(C)

Transmittal # 12

Issued: March 24, 2020

Effective: April 8, 2020

By: Jeffrey A. Hoffman, Chief Financial Officer
900 Main Campus Drive, Suite 100
Raleigh, NC 27606

INTERSTATE SWITCHED ACCESS SERVICES TARIFF

SECTION 5 – SWITCHED ACCESS RATES, (Cont'd.)

5.4 Rates and Charges, (Cont'd.)

5.4.5 Frontier Territory (Formerly Verizon), (Cont'd.)

J. Washington, all zones

	<u>Originating</u>	<u>Terminating</u>	(C)
Tandem-Switched Transport - Termination, per minute per termination	\$0.0000000	\$0.0000000	—
Tandem-Switched Transport - Facility, per minute per mile	\$0.0000020	\$0.0000020	—
Access Tandem Switching, per minute	\$0.0036642	\$0.0036642	—
CMUX, per minute	\$0.0000000	\$0.0000000	—
CTP, per minute	\$0.0003861	\$0.0000000	—
End Office Switching, per minute	\$0.0018654	\$0.0000000	(C)

K. Wisconsin

	<u>Originating</u>	<u>Terminating</u>	(C)
Tandem-Switched Transport - Termination, per minute per termination	\$0.0000000	\$0.0000000	—
Tandem-Switched Transport - Facility, per minute per mile	\$0.0000020	\$0.0000020	—
Access Tandem Switching, per minute	\$0.0024000	\$0.0024000	—
CMUX, per minute	\$0.0000000	\$0.0000000	—
CTP, per minute	\$0.0006610	\$0.0000000	—
End Office Switching, per minute	\$0.0025672	\$0.0000000	(C)

L. Virginia and West Virginia

	<u>Originating</u>	<u>Terminating</u>	(C)
Tandem-Switched Transport - Termination, per minute	\$0.0000000	\$0.0000000	—
Tandem-Switched Transport - Facility, per minute per mile	\$0.0000020	\$0.0000020	—
Access Tandem Switching, per minute	\$0.0016840	\$0.0016840	—
CMUX, per minute	\$0.0000000	\$0.0000000	—
CTP, per minute	\$0.0015810	\$0.0000000	—
End Office Switching, per minute	\$0.0022730	\$0.0000000	(C)

Transmittal # 12

Issued: March 24, 2020

Effective: April 8, 2020

By: Jeffrey A. Hoffman, Chief Financial Officer
900 Main Campus Drive, Suite 100
Raleigh, NC 27606

INTERSTATE SWITCHED ACCESS SERVICES TARIFF

SECTION 5 – SWITCHED ACCESS RATES, (Cont'd.)

5.4 Rates and Charges, (Cont'd.)

5.4.5 Frontier Territory (Formerly Verizon), (Cont'd.)

Connecticut (formerly SNET)

	<u>Originating</u>	<u>Terminating</u>	(C)
Tandem-Switched Transport - Termination, per minute	\$0.000063	\$0.000063	
Tandem-Switched Transport - Facility, per minute per mile	\$0.000003	\$0.000003	
Access Tandem Switching, per minute	\$0.000634	\$0.000634	
CMUX, per minute	\$0.000082	\$0.000082	
CTP, per minute	\$0.001400	\$0.000000	
End Office Switching, per minute	\$0.003133	\$0.0000000	(C)

California, all zones

	<u>Originating</u>	<u>Terminating</u>	(C)
Tandem-Switched Transport - Termination, per minute per termination	\$0.0000000	\$0.0000000	
Tandem-Switched Transport - Facility, per minute per mile	\$0.0000020	\$0.0000020	
Access Tandem Switching, per minute	\$0.0015740	\$0.0015740	
CMUX, per minute	\$0.0000000	\$0.0000000	
CTP, per minute	\$0.0016920	\$0.0000000	
End Office Switching, per minute	\$0.0019019	\$0.0000000	(C)

Florida, all zones

	<u>Originating</u>	<u>Terminating</u>	(C)
Tandem-Switched Transport - Termination, per minute per termination	\$0.0000000	\$0.0000000	
Tandem-Switched Transport - Facility, per minute per mile	\$0.0000020	\$0.0000020	
Access Tandem Switching, per minute	\$0.0015740	\$0.0015740	
CMUX, per minute	\$0.0000000	\$0.0000000	
CTP, per minute	\$0.0016920	\$0.0000000	
End Office Switching, per minute	\$0.0020995	\$0.0000000	(C)

Transmittal # 12

Issued: March 24, 2020

Effective: April 8, 2020

By: Jeffrey A. Hoffman, Chief Financial Officer
900 Main Campus Drive, Suite 100
Raleigh, NC 27606

INTERSTATE SWITCHED ACCESS SERVICES TARIFF

SECTION 5 – SWITCHED ACCESS RATES, (Cont'd.)

5.4 Rates and Charges, (Cont'd.)

5.4.5 Frontier Territory (Formerly Verizon), (Cont'd.)

Texas, all zones

	<u>Originating</u>	<u>Terminating</u>	(C)
Tandem-Switched Transport - Termination, per minute per termination	\$0.0000000	\$0.0000000	
Tandem-Switched Transport - Facility, per minute per mile	\$0.0000020	\$0.0000020	
Access Tandem Switching, per minute	\$0.0015740	\$0.0015740	
CMUX, per minute	\$0.0000000	\$0.0000000	
CTP, per minute	\$0.0016920	\$0.0000000	
End Office Switching, per minute	\$0.0024060	\$0.0000000	(C)

Transmittal # 12

Issued: March 24, 2020

Effective: April 8, 2020

By: Jeffrey A. Hoffman, Chief Financial Officer
900 Main Campus Drive, Suite 100
Raleigh, NC 27606

INTERSTATE SWITCHED ACCESS SERVICES TARIFF

SECTION 5 – SWITCHED ACCESS RATES, (Cont'd.)

5.4 Rates and Charges, (Cont'd.)

5.4.6 FairPoint Territory (Maine, New Hampshire, Vermont)*

	<u>Originating</u>	<u>Terminating</u>	(C)
Tandem-Switched Transport - Termination, per minute	\$0.000000	\$0.000000	
Tandem-Switched Transport - Facility, per minute per mile	\$0.000003	\$0.000003	
Access Tandem Switching, per minute	\$0.001600	\$0.001600	
CMUX, per minute	\$0.000000	\$0.000000	
CTP, per minute	\$0.001595	\$0.000000	
End Office Switching, per minute	\$0.002264	\$0.000000	(C)

*Territory previously served by Verizon.

5.4.7 Hawaiian Telcom Territory – Hawaii

	<u>Originating</u>	<u>Terminating</u>	(C)
Tandem-Switched Transport - Termination, per minute	\$0.00013000	\$0.00013000	
Tandem-Switched Transport - Facility, per minute per mile	\$0.00003000	\$0.00003000	
Access Tandem Switching, per minute	\$0.00120000	\$0.00120000	
CMUX, per minute	\$0.00003560	\$0.00003560	
CTP, per minute	\$0.00080980	\$0.00000000	
End Office Switching, per minute	\$0.00178350	\$0.00000000	(C)

5.4.8 Frontier-Rochester Territory

	<u>Originating</u>	<u>Terminating</u>	(C)
Tandem-Switched Transport - Termination, per minute	\$0.00114997	\$0.00114997	
Tandem-Switched Transport - Facility, per minute per mile	\$0.00004000	\$0.00004000	
Access Tandem Switching, per minute	\$0.00010000	\$0.00010000	
CMUX, per minute	\$0.00001000	\$0.00001000	
CTP, per minute	\$0.00070000	\$0.00000000	
End Office Switching, per minute	\$0.00295157	\$0.00000000	(C)

Transmittal # 12

Issued: March 24, 2020

Effective: April 8, 2020

By: Jeffrey A. Hoffman, Chief Financial Officer
900 Main Campus Drive, Suite 100
Raleigh, NC 27606

INTERSTATE SWITCHED ACCESS SERVICES TARIFF

SECTION 5 – SWITCHED ACCESS RATES, (Cont'd.)

5.4 Rates and Charges, (Cont'd.)

5.4.9 Cincinnati Bell Territory

	<u>Originating</u>	<u>Terminating</u>	(C)
Tandem-Switched Transport - Termination, per minute	\$0.00060000	\$0.00060000	
Tandem-Switched Transport - Facility, per minute per mile	\$0.00011700	\$0.00011700	
Access Tandem Switching, per minute	\$0.00200100	\$0.00200100	
CMUX, per minute	\$0.00024000	\$0.00024000	
CTP, per minute	\$0.00096800	\$0.00000000	
End Office Switching, per minute	\$0.00386250	\$0.00000000	(C)

Transmittal # 12

Issued: March 24, 2020

Effective: April 8, 2020

By: Jeffrey A. Hoffman, Chief Financial Officer
900 Main Campus Drive, Suite 100
Raleigh, NC 27606

INTERSTATE SWITCHED ACCESS SERVICES TARIFF

SECTION 5 – SWITCHED ACCESS RATES, (Cont'd.)

5.4 Rates and Charges, (Cont'd.)

5.4.10 Valor Telecommunications of Texas d/b/a Windstream Communications Southwest Territory

A. New Mexico # 1164

	<u>Originating</u>	<u>Terminating</u>	(C)
Tandem-Switched Transport - Termination, per minute	\$0.00009900	\$0.00009900	
Tandem-Switched Transport - Facility, per minute per mile	\$0.00011200	\$0.00011200	
Access Tandem Switching, per minute	\$0.00040000	\$0.00040000	
CMUX, per minute	\$0.00002770	\$0.00002770	
CTP, per minute	\$0.00059400	\$0.00000000	
End Office Switching, per minute	\$0.00090100	\$0.00000000	(C)

B. New Mexico # 1193

	<u>Originating</u>	<u>Terminating</u>	(C)
Tandem-Switched Transport - Termination, per minute	\$0.00050300	\$0.00050300	
Tandem-Switched Transport - Facility, per minute per mile	\$0.00012880	\$0.00012880	
Access Tandem Switching, per minute	\$0.00010000	\$0.00010000	
CMUX, per minute	\$0.00002000	\$0.00002000	
CTP, per minute	\$0.00074900	\$0.00000000	
End Office Switching, per minute	\$0.00344100	\$0.00000000	(C)

Transmittal # 12

Issued: March 24, 2020

Effective: April 8, 2020

By: Jeffrey A. Hoffman, Chief Financial Officer
900 Main Campus Drive, Suite 100
Raleigh, NC 27606

INTERSTATE SWITCHED ACCESS SERVICES TARIFF

SECTION 5 – SWITCHED ACCESS RATES, (Cont'd.)

5.4 Rates and Charges, (Cont'd.)

5.4.10 Valor Telecommunications of Texas d/b/a Windstream Communications Southwest Territory, (Cont'd.)

C. Texas # 1163

Zone 1

	<u>Originating</u>	<u>Terminating</u>	(C)
Tandem-Switched Transport - Termination, per minute	\$0.00045000	\$0.00045000	
Tandem-Switched Transport - Facility, per minute per mile	\$0.00023000	\$0.00023000	
Access Tandem Switching, per minute	\$0.00025000	\$0.00025000	
CMUX, per minute	\$0.00005290	\$0.00005290	
CTP, per minute	\$0.00132220	\$0.00000000	
End Office Switching, per minute	\$0.00579300	\$0.00000000	

Zone 2

	<u>Originating</u>	<u>Terminating</u>	(C)
Tandem-Switched Transport - Termination, per minute	\$0.00030000	\$0.00030000	
Tandem-Switched Transport - Facility, per minute per mile	\$0.00015000	\$0.00015000	
Access Tandem Switching, per minute	\$0.00020200	\$0.00020200	
CMUX, per minute	\$0.00005290	\$0.00005290	
CTP, per minute	\$0.00132220	\$0.00000000	
End Office Switching, per minute	\$0.00579300	\$0.00000000	

Transmittal # 12

Issued: March 24, 2020

Effective: April 8, 2020

By: Jeffrey A. Hoffman, Chief Financial Officer
900 Main Campus Drive, Suite 100
Raleigh, NC 27606

SECTION 5 – SWITCHED ACCESS RATES, (Cont'd.)

5.4.10 Valor Telecommunications of Texas d/b/a Windstream Communications Southwest Territory, (Cont'd.)

Zone 3

	<u>Originating</u>	<u>Terminating</u>	(C)
Tandem-Switched Transport - Termination, per minute	\$0.00025000	\$0.00025000	-----
Tandem-Switched Transport - Facility, per minute per mile	\$0.00010000	\$0.00010000	
Access Tandem Switching, per minute	\$0.00015000	\$0.00015000	
CMUX, per minute	\$0.00005290	\$0.00005290	
CTP, per minute	\$0.00132220	\$0.00000000	
End Office Switching, per minute	\$0.00579300	\$0.00000000	

Effective: April 8, 2020

By: Jeffrey A. Hoffman, Chief Financial Officer
900 Main Campus Drive, Suite 100
Raleigh, NC 27606

INTERSTATE SWITCHED ACCESS SERVICES TARIFF

SECTION 5 – SWITCHED ACCESS RATES, (Cont'd.)

5.4 Rates and Charges, (Cont'd.)

5.4.10 Valor Telecommunications of Texas d/b/a Windstream Communications Southwest Territory, (Cont'd.)

D. Texas # 1181

	<u>Originating</u>	<u>Terminating</u>	(C)
Tandem-Switched Transport - Termination, per minute	\$0.00015120	\$0.00015120	
Tandem-Switched Transport - Facility, per minute per mile	\$0.00005300	\$0.00005300	
Access Tandem Switching, per minute	\$0.00028500	\$0.00028500	
CMUX, per minute	\$0.00004600	\$0.00004600	
CTP, per minute	\$0.00104880	\$0.00000000	
End Office Switching, per minute	\$0.00714730	\$0.00000000	(C)

Transmittal # 12

Issued: March 24, 2020

Effective: April 8, 2020

By: Jeffrey A. Hoffman, Chief Financial Officer
900 Main Campus Drive, Suite 100
Raleigh, NC 27606

INTERSTATE SWITCHED ACCESS SERVICES TARIFF

SECTION 5 – SWITCHED ACCESS RATES, (Cont'd.)

5.4 Rates and Charges, (Cont'd.)

5.4.11 Rio Virgin Telephone Company (Nevada and Arizona) Territory

	<u>Originating</u>	<u>Terminating</u>	(C)
Tandem-Switched Transport - Termination, per minute	\$0.001062	\$0.001062	
Tandem-Switched Transport - Facility, per minute per mile	\$0.000203	\$0.000203	
Access Tandem Switching, per minute	\$0.002679	\$0.002679	
CMUX, per minute	N/A	N/A	
CTP, per minute	N/A	N/A	
End Office Switching, per minute	\$0.014613	\$0.0007	(C)

5.4.12 Tularosa Basin Telephone Company (New Mexico) Territory

	<u>Originating</u>	<u>Terminating</u>	(C)
Tandem-Switched Transport - Termination, per minute	\$0.002267	\$0.002267	
Tandem-Switched Transport - Facility, per minute per mile	\$0.000437	\$0.000437	
Access Tandem Switching, per minute	\$0.005718	\$0.005718	
CMUX, per minute	N/A	N/A	
CTP, per minute	N/A	N/A	
End Office Switching, per minute	\$0.014613	\$0.0007	(C)

Transmittal # 12

Issued: March 24, 2020

Effective: April 8, 2020

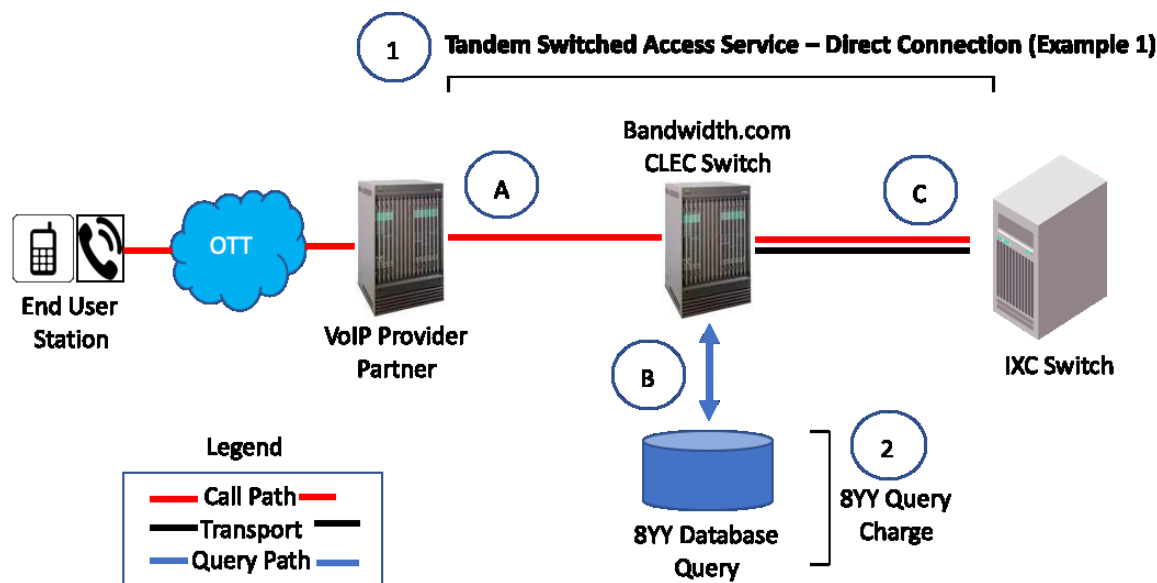
By: Jeffrey A. Hoffman, Chief Financial Officer
900 Main Campus Drive, Suite 100
Raleigh, NC 27606

INTERSTATE SWITCHED ACCESS SERVICES TARIFF

SECTION 5 – SWITCHED ACCESS RATES, (Cont'd.)

Tandem Switching Access Service – Direct Connection

Section 5.2.1.A (Sections 5.2.4 and 5.2.5 also apply to Originating 8YY Calls)

**Originating Call Flow:**

- A. End User places long distance call that is routed to Bandwidth.com CLEC switch.
 B. If 8YY call, Bandwidth.com CLEC looks up IXC that should receive the call in 8YY Database.
 C. Call is routed to IXC switch via dedicated transport.

Originating Charges:

Bandwidth.com CLEC charges IXC for:

- (1) Tandem Switching Access Service – Direct Connection, which is comprised of:
- (a) Access Tandem switching;
 - (b) Tandem-Switched Transport Termination and Common Multiplexing;
 - (c) Tandem-Switched Transport - Facility;
 - (d) Dedicated Trunk Port (ICB) or Common Trunk Port

- (2) 8YY Query Charge, as applicable.

Customer is responsible for providing or ordering dedicated facilities to Bandwidth.com CLEC's point of presence in the access tandem serving area.

Terminating Call Flow:

- C. IXC delivers terminating long distance call to Bandwidth.com CLEC switch via dedicated transport.
 A. Bandwidth.com CLEC switches and routes call to VoIP Provider Partner

Terminating Charges:

Bandwidth.com CLEC charges IXC for:

- (1) Tandem Switching Access Service – Direct Connection, which is comprised of:
- (a) Tandem-Switched Transport Termination and Common Multiplexing;
 - (b) Tandem-Switched Transport - Facility;
 - (c) Dedicated Trunk Port (ICB) or Common Trunk Port

Customer is responsible for providing or ordering dedicated facilities to Bandwidth.com CLEC's point of presence in the access tandem serving area

Transmittal # 12

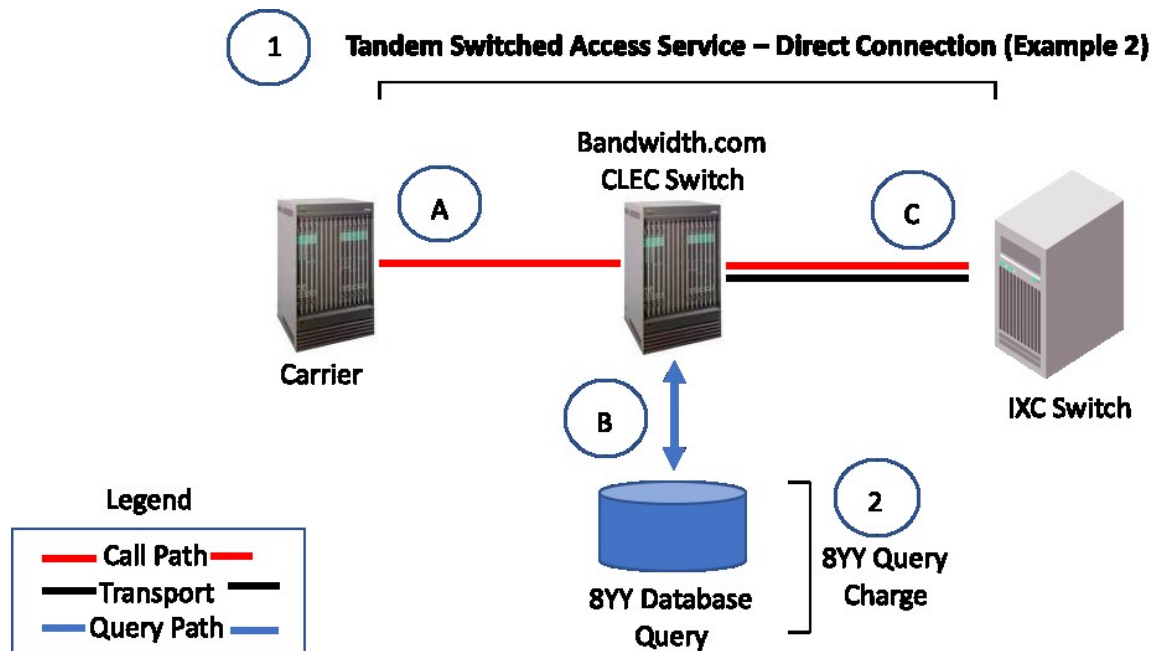
Issued: March 24, 2020

Effective: April 8, 2020

By: Jeffrey A. Hoffman, Chief Financial Officer
 900 Main Campus Drive, Suite 100
 Raleigh, NC 27606

INTERSTATE SWITCHED ACCESS SERVICES TARIFF

SECTION 5 – SWITCHED ACCESS RATES, (Cont'd.)

**Originating Call Flow:**

- A. 3rd Party Carrier routes long distance call to Bandwidth.com CLEC switch.
 B. If 8YY call, Bandwidth.com CLEC looks up IXC that should receive the call in 8YY Database.
 C. Call is routed to IXC switch via dedicated transport.

Originating Charges:

Bandwidth.com CLEC charges IXC for:

- (1) Tandem Switching Access Service – Direct Connection, which is comprised of:
- (a) Access Tandem switching;
 - (b) Tandem-Switched Transport Termination and Common Multiplexing;
 - (c) Tandem-Switched Transport - Facility;
 - (d) Dedicated Trunk Port (ICB) or Common Trunk Port

- (2) 8YY Query Charge, as applicable.

Customer is responsible for providing or ordering dedicated facilities to Bandwidth.com CLEC's point of presence in the access tandem serving area.

Terminating Call Flow:

- C. IXC delivers terminating long distance call to Bandwidth.com CLEC switch via dedicated transport.
 A. Bandwidth.com CLEC switches and routes call to 3rd Party Carrier.

Terminating Charges:

Bandwidth.com CLEC charges IXC for:

- (1) Tandem Switching Access Service – Direct Connection, which is comprised of:
- (a) Access Tandem Switching
 - (b) Tandem-Switched Transport Termination and Common Multiplexing;
 - (c) Tandem-Switched Transport - Facility;
 - (d) Dedicated Trunk Port (ICB) or Common Trunk Port

Customer is responsible for providing or ordering dedicated facilities to Bandwidth.com CLEC's point of presence in the access tandem serving area.

Transmittal # 12

Issued: March 24, 2020

Effective: April 8, 2020

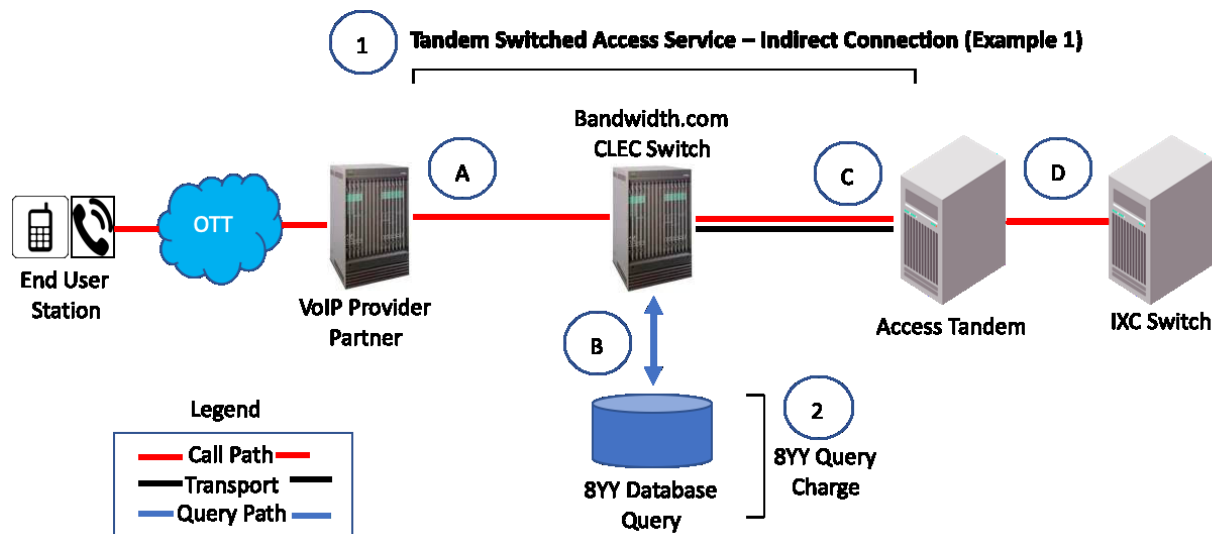
By: Jeffrey A. Hoffman, Chief Financial Officer
 900 Main Campus Drive, Suite 100
 Raleigh, NC 27606

INTERSTATE SWITCHED ACCESS SERVICES TARIFF

SECTION 5 – SWITCHED ACCESS RATES, (Cont'd.)

Tandem Switching Access Service – Indirect Connection

Section 5.2.1.B (Sections 5.2.4 and 5.2.5 also apply to Originating 8YY Calls)

**Originating Call Flow:**

- A. End User places long distance call that is routed to Bandwidth.com CLEC switch.
 B. If 8YY call, Bandwidth.com CLEC looks up IXC that should receive the call in 8YY Database.
 C. Call is routed from Bandwidth.com CLEC switch to Third-Party Access Tandem over shared transport.
 D. Third-Party Access Tandem provider routes call to IXC.

Originating Charges:

Bandwidth.com CLEC charges IXC for:

- (1) Tandem Switching Access Service – Indirect Connection, which is comprised of:
- (a) Access Tandem switching;
 - (b) Tandem-Switched Transport Termination and Common Multiplexing;
 - (c) Tandem-Switched Transport – Facility.
 - (d) Common Trunk Port
- (2) 8YY Query Charge, as applicable.

Additional charges may be assessed by the third-party access tandem provider.

Terminating Call Flow:

- D. IXC delivers terminating long distance call to Third-Party Access Tandem.
 C. Third-Party Access Tandem provider routes call over shared transport to Bandwidth.com CLEC switch.
 A. Call is routed from Bandwidth.com CLEC switch to VoIP Provider Partner.

Terminating Charges:

Bandwidth.com CLEC charges IXC for:

- (1) Tandem Switching Access Service – Indirect Connection, which is comprised of:
- (a) Access Tandem switching;
 - (b) Tandem-Switched Transport Termination and Common Multiplexing;
 - (c) Tandem-Switched Transport – Facility.

Additional charges may be assessed by the third-party access tandem provider

Transmittal # 12

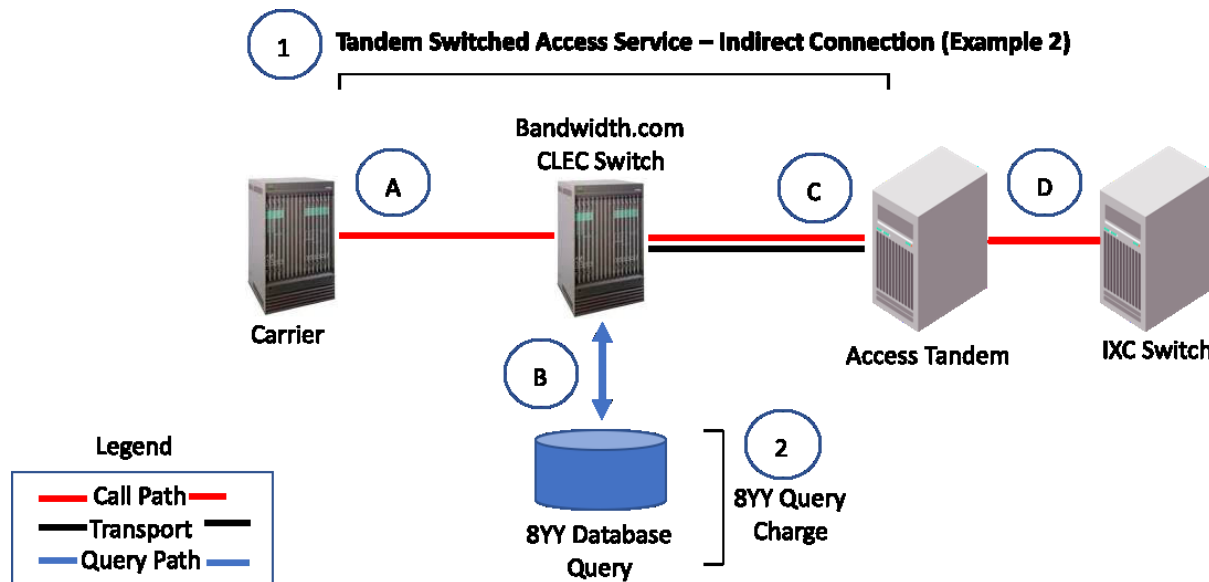
Issued: March 24, 2020

Effective: April 8, 2020

By: Jeffrey A. Hoffman, Chief Financial Officer
 900 Main Campus Drive, Suite 100
 Raleigh, NC 27606

INTERSTATE SWITCHED ACCESS SERVICES TARIFF

SECTION 5 – SWITCHED ACCESS RATES, (Cont'd.)

**Originating Call Flow:**

- A. 3rd Party Carrier routes long distance call to Bandwidth.com CLEC switch.
- B. If 8YY call, Bandwidth.com CLEC looks up IXC that should receive the call in 8YY Database.
- C. Call is routed from Bandwidth.com CLEC switch to Third-Party Access Tandem over shared transport.
- D. Third-Party Access Tandem provider routes call to IXC.

Originating Charges:

Bandwidth.com CLEC charges IXC for:

- (1) Tandem Switching Access Service – Indirect Connection, which is comprised of:
 - (a) Access Tandem switching;
 - (b) Tandem-Switched Transport Termination and Common Multiplexing;
 - (c) Tandem-Switched Transport – Facility.
 - (d) Common Trunk Port
- (2) 8YY Query Charge, as applicable.

Additional charges may be assessed by the third-party access tandem provider.

Terminating Call Flow:

- D. IXC delivers terminating long distance call to Third-Party Access Tandem.
- C. Third-Party Access Tandem provider routes call over shared transport to Bandwidth.com CLEC switch.
- A. Call is routed from Bandwidth.com CLEC switch to 3rd Party Carrier.

Terminating Charges:

Bandwidth.com CLEC charges IXC for:

- (1) Tandem Switching Access Service – Indirect Connection, which is comprised of:
 - (a) Access Tandem Switching
 - (b) Tandem-Switched Transport Termination and Common Multiplexing;
 - (c) Tandem-Switched Transport – Facility.

Additional charges may be assessed by the third-party access tandem provider

Transmittal # 12

Issued: March 24, 2020

Effective: April 8, 2020

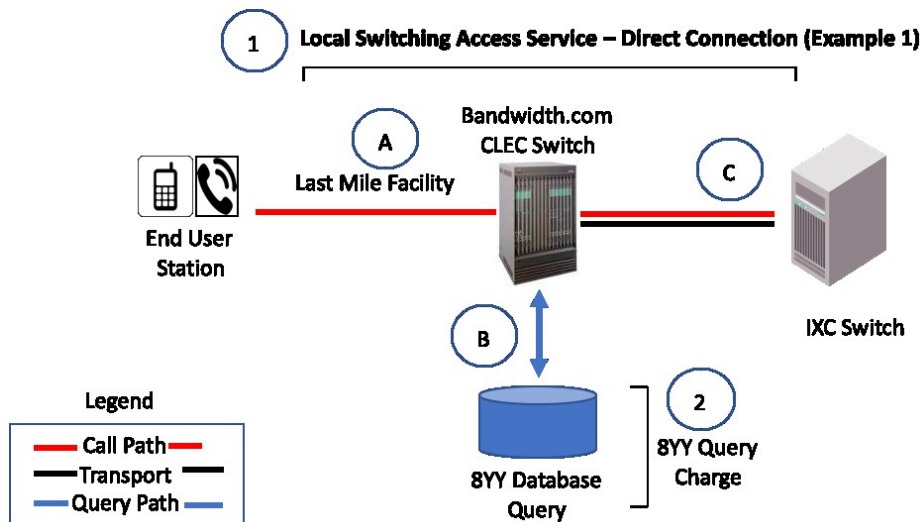
By: Jeffrey A. Hoffman, Chief Financial Officer
900 Main Campus Drive, Suite 100
Raleigh, NC 27606

INTERSTATE SWITCHED ACCESS SERVICES TARIFF

SECTION 5 – SWITCHED ACCESS RATES, (Cont’d.)

Local Switching Access Service – Direct Connection

Section 5.2.2 (Sections 5.2.4 and 5.2.5 also apply to Originating 8YY Calls)

**Originating Call Flow:**

- A. End User places a long distance call that is routed to Bandwidth.com CLEC switch.
 B. If 8YY call, Bandwidth.com CLEC looks up IXC that should receive the call in 8YY Database.
 C. Call is routed from Bandwidth.com CLEC switch to IXC switch via dedicated transport.

Originating Charges:

Bandwidth.com CLEC charges IXC for:

- (1) Local Switching Access Service – Direct Connection, which is comprised of:
 (a) End Office Switching,
 (b) Dedicated Trunk Port (ICB) or Common Trunk Port
 (2) 8YY Query Charge, as applicable.

Terminating Call Flow:

- C. IXC delivers terminating long distance call to Bandwidth.com CLEC switch via dedicated transport
 A. Call is routed from Bandwidth.com CLEC switch to Bandwidth.com CLEC-End User.

Terminating Charges:

CLEC charges IXC for:

- (1) Local Switching Access Service – Direct Connection, which is comprised of:
 (a) End Office Switching;
 (b) Dedicated Trunk Port (ICB) or Common Trunk Port;

Transmittal # 12

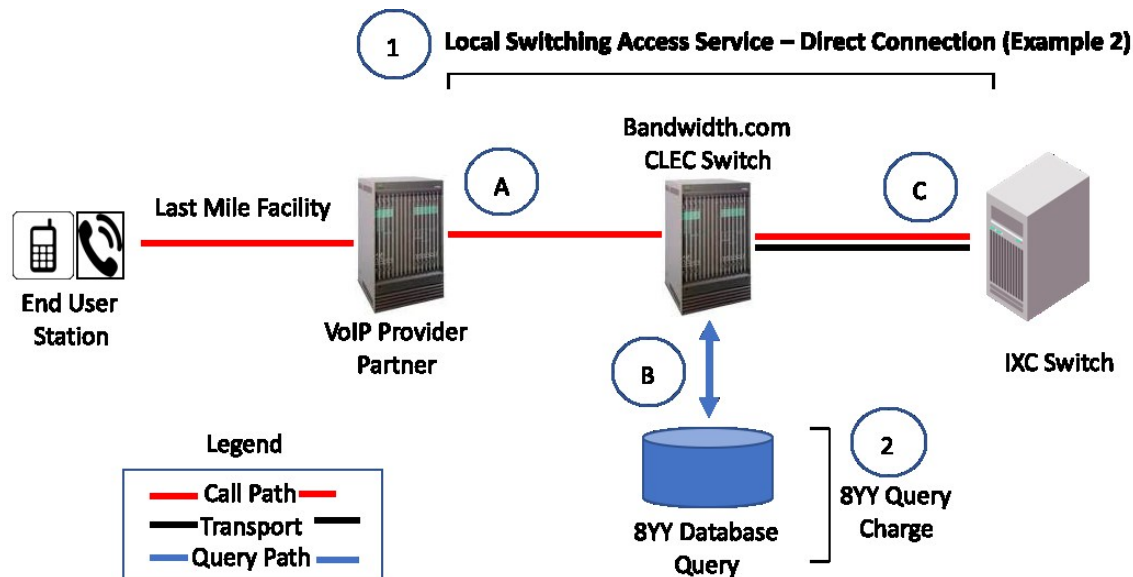
Issued: March 24, 2020

Effective: April 8, 2020

By: Jeffrey A. Hoffman, Chief Financial Officer
 900 Main Campus Drive, Suite 100
 Raleigh, NC 27606

INTERSTATE SWITCHED ACCESS SERVICES TARIFF

SECTION 5 – SWITCHED ACCESS RATES, (Cont'd.)

**Originating Call Flow:**

- A. End User places a long distance call that is routed to Bandwidth.com CLEC switch.
 B. If 8YY call, Bandwidth.com CLEC looks up IXC that should receive the call in 8YY Database.
 C. Call is routed from Bandwidth.com CLEC switch to IXC switch via dedicated transport.

Originating Charges:

Bandwidth.com CLEC charges IXC for:

- (1) Local Switching Access Service – Direct Connection, which is comprised of:
 (a) End Office Switching,
 (b) Dedicated Trunk Port (ICB) or Common Trunk Port.
 (2) 8YY Query Charge, as applicable.

Terminating Call Flow:

- C. IXC delivers terminating long distance call to Bandwidth.com CLEC switch via dedicated transport
 A. Call is routed from Bandwidth.com CLEC switch to VoIP Provider Partner

Terminating Charges:

CLEC charges IXC for:

- (1) Local Switching Access Service – Direct Connection, which is comprised of:
 (a) End Office Switching;
 (b) Dedicated Trunk Port (ICB) or Common Trunk Port.

Transmittal # 12

Issued: March 24, 2020

Effective: April 8, 2020

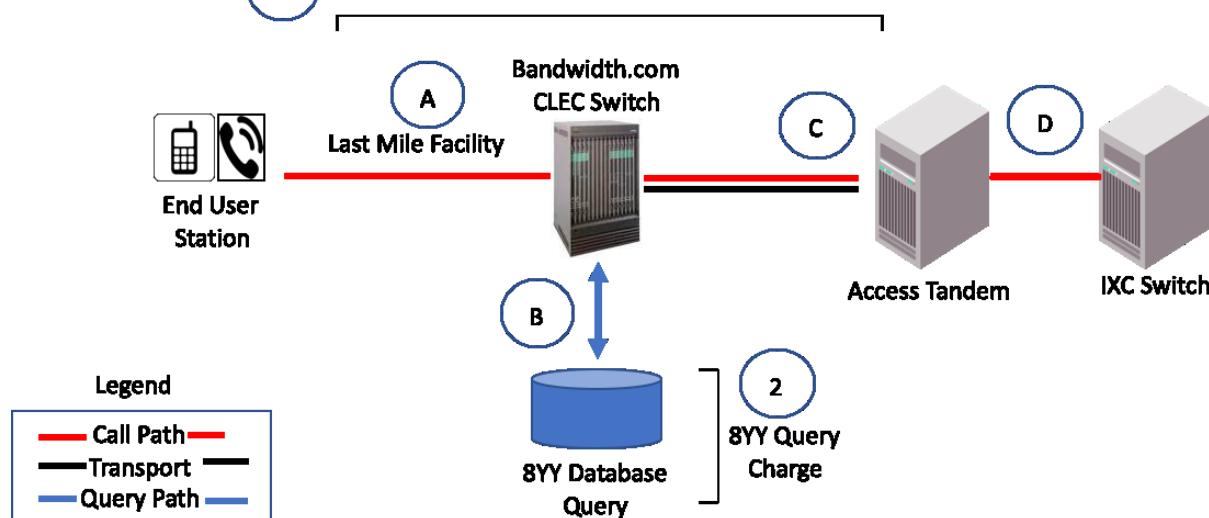
By: Jeffrey A. Hoffman, Chief Financial Officer
 900 Main Campus Drive, Suite 100
 Raleigh, NC 27606

INTERSTATE SWITCHED ACCESS SERVICES TARIFF

SECTION 5 – SWITCHED ACCESS RATES, (Cont'd.)

Local Switching Access Service – Indirect Connection

Section 5.2.3 (Sections 5.2.4 and 5.2.5 also apply to Originating 8YY Calls)

1 Local Switching Access Service – Indirect Connection (Example 1)**Originating Call Flow:**

- A End User places a long distance call that is routed to Bandwidth.com CLEC switch.
 B. If 8YY call, Bandwidth.com CLEC looks up IXC that should receive the call in 8YY Database.
 C. Call is routed from Bandwidth.com CLEC switch to Third-Party Access Tandem over shared transport.
 D. Third-Party Access Tandem provider routes call to IXC.

Originating Charges:

Bandwidth.com CLEC charges IXC for:

- (1) Local Switching Access Service – Indirect Connection, which is comprised of:
- (a) End Office Switching;
 - (b) Common Trunk Port;
 - (c) Tandem-Switched Transport Termination and Common Multiplexing;
 - (d) Tandem-Switched Transport - Facility.
- (2) 8YY Query Charge, as applicable.

Additional charges may be assessed by the third-party access tandem provider.

Terminating Call Flow:

- D. IXC delivers terminating long distance call to Third-Party Access Tandem.
 C. Third-Party Access Tandem provider routes call over shared transport to Bandwidth.com CLEC switch.
 A. Call is routed from Bandwidth.com CLEC switch to Bandwidth.com CLEC End User.

Terminating Charges:

CLEC charges IXC for:

- (1) Local Switching Access Service – Indirect Connection, which is comprised of:
- (a) End Office Switching;
 - (b) Common Trunk Port;
 - (c) Tandem-Switched Transport Termination and Common Multiplexing;
 - (d) Tandem-Switched Transport - Facility

Additional charges may be assessed by the third-party access tandem provider.

Transmittal # 12

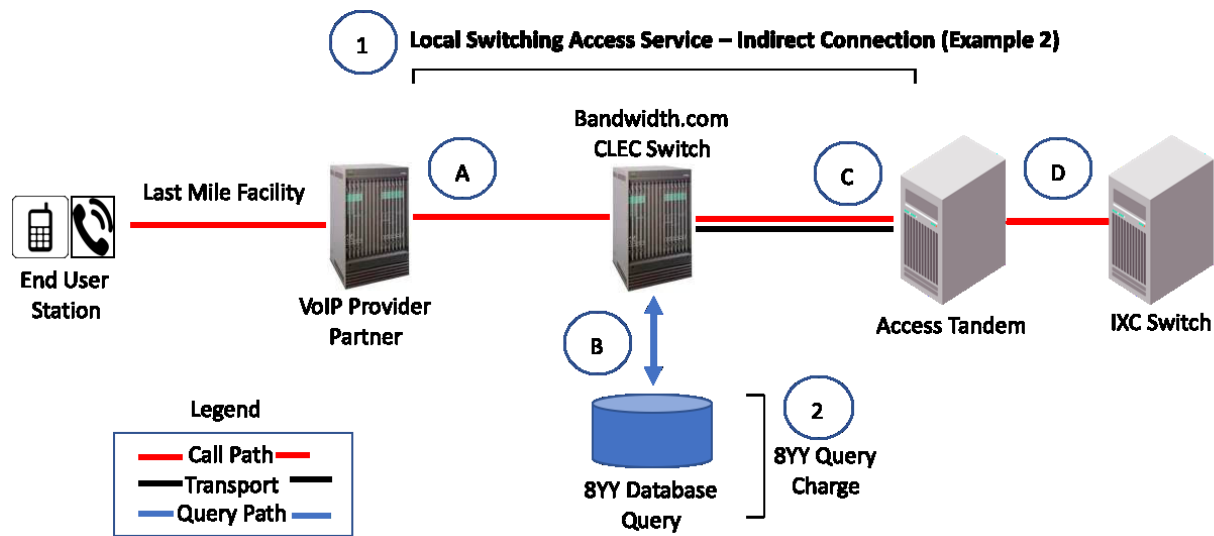
Issued: March 24, 2020

Effective: April 8, 2020

By: Jeffrey A. Hoffman, Chief Financial Officer
 900 Main Campus Drive, Suite 100
 Raleigh, NC 27606

INTERSTATE SWITCHED ACCESS SERVICES TARIFF

SECTION 5 – SWITCHED ACCESS RATES, (Cont'd.)

**Originating Call Flow:**

- A. End User places a long distance call that is routed to Bandwidth.com CLEC switch.
 B. If 8YY call, Bandwidth.com CLEC looks up IXC that should receive the call in 8YY Database.
 C. Call is routed from Bandwidth.com CLEC switch to Third-Party Access Tandem over shared transport.
 D. Third-Party Access Tandem provider routes call to IXC.

Originating Charges:

Bandwidth.com CLEC charges IXC for:

- (1) Local Switching Access Service – Indirect Connection, which is comprised of:
 (a) End Office Switching,
 (b) Common Trunk Port;
 (c) Tandem-Switched Transport Termination and Common Multiplexing;
 (d) Tandem-Switched Transport - Facility.
 (2) 8YY Query Charge, as applicable.
 Additional charges may be assessed by the third-party access tandem provider.

Terminating Call Flow:

- D. IXC delivers terminating long distance call to Third-Party Access Tandem.
 C. Third-Party Access Tandem provider routes call over shared transport to Bandwidth.com CLEC switch.
 A. Call is routed from Bandwidth.com CLEC switch to VoIP Provider Partner.

Terminating Charges:

CLEC charges IXC for:

- (1) Local Switching Access Service – Indirect Connection, which is comprised of:
 (a) End Office Switching;
 (b) Common Trunk Port;
 (c) Tandem-Switched Transport Termination and Common Multiplexing;
 (d) Tandem-Switched Transport - Facility

Additional charges may be assessed by the third-party access tandem provider

Transmittal # 12

Issued: March 24, 2020

Effective: April 8, 2020

By: Jeffrey A. Hoffman, Chief Financial Officer
 900 Main Campus Drive, Suite 100
 Raleigh, NC 27606

INTERSTATE SWITCHED ACCESS SERVICES TARIFF

SECTION 6 – END USER ACCESS SERVICE

6.1 General Description

The Company will provide End User Access Service to end users who obtain local telephone exchange service from the Company's General Subscriber Service Tariffs. End User Access Service provides for the use of an End User Common Line (EUCL).

6.2 Limitations

- (A) A telephone number is not provided with End User Access Service.
- (B) Detail billing is not provided with End User Access Service.
- (C) Directory listings are not included with End User Access Service.
- (D) Intercept arrangements are not included with End User Access Service.

(T)

6.3 Undertaking of the Company

The Company will provide End User Access Service at rates and charges as set forth in 6.7 following, as follows:

- (A) Use of an EUCL by an end user will be provided when the end user obtains local exchange service in connection with interstate access services provided under this Tariff.
- (B) The Company will be responsible for contacts and arrangements with end users for the billing of End User Access Service charges.

6.4 Obligations of the End User

- (A) When the end user is a Radio Common Carrier (RCC) or a Maritime Radio Common Carrier (MRCC), it shall designate whether the local exchange services it is provided by the Company are used as access lines for its services or used as administrative lines.
- (B) When the end user is provided with a local exchange service which is not identified as Centrex Type Services, Business Service or Residence Service, it shall provide the Company any requested information necessary for the Company to determine the appropriate charges.

Transmittal # 12

Issued: March 24, 2020

Effective: April 8, 2020

By: Jeffrey A. Hoffman, Chief Financial Officer
900 Main Campus Drive, Suite 100
Raleigh, NC 27606