

Issued: March 1, 2019

FACILITIES FOR INTERSTATE ACCESS

CHECK SHEET

Title Pages 1 to 3 and Pages 1 to 24-10 inclusive, of this tariff are effective as of the date shown. Original and revised pages as named below and Supplement Nos. 1, 2, 5, 6, 7, 8, and 10 contain all changes from the original tariff that are in effect on the date shown.

<u>Page</u>	<u>Revision</u>	<u>Page</u>	<u>Revision</u>	<u>Page</u>	<u>Revision</u>	<u>Page</u>	<u>Revision</u>
Title Page 1	1st	22.1	1st*	2-5	Original	2-36	2nd
Title Page 2	9th	23	1st	2-6	3rd	2-37	1st
Title Page 3	4th	24	6th	2-6.1	1st	2-38	Original
1	462nd*	24.1	7th	2-7	7th	2-39	2nd
1.1	49th*	25	6th	2-8	3rd	2-40	3rd
2	81st*	26	3rd	2-9	2nd	2-41	2nd
2.1	43rd*	27	7th	2-10	1st	2-41.1	3rd
3	76th*	27.1	3rd	2-11	8th	2-42	1st
3.1	35th*	28	8th	2-11.1	5th	2-43	2nd
4	96th*	29	1st	2-11.2	3rd	2-44	1st
4.1	156th	30	1st	2-12	7th	2-45	Original
4.2	3rd	31	7th	2-12.1	1st	2-46	Original
5	97th	32	2nd	2-13	4th	2-47	Original
5.1	5th	33	1st	2-13.1	2nd	2-47.1	Original
6	12th	34	10th	2-13.2	1st	2-47.2	Original
7	45th	35	Original	2-14	2nd	2-48	Original
7.1	43rd*	36	4th	2-14.1	3rd	2-49	2nd
8	27th	37	3rd	2-14.2	3rd	2-50	2nd
9	15th	38	1st	2-14.3	1st	2-50.1	3rd*
9.1	10th	39	1st	2-15	2nd	2-50.2	5th*
10	57th	40	4th	2-16	3rd	2-50.3	7th*
10.1	3rd	41	13th	2-16.1	3rd	2-50.4	2nd
10.2	41st	41.1	Original	2-16.2	7th	2-50.5	Original
10.3	14th	41.2	8th	2-17	2nd	2-50.6	Original
10.3.1	8th	41.3	1st	2-17.1	1st	2-50.7	Original
10.3.2	3rd	41.4	Original	2-18	6th	2-50.8	Original
10.4	18th*	42	8th	2-19	3rd*	2-50.9	2nd
11	3rd	43	5th	2-20	Original	2-50.10	5th
12	4th	44	5th	2-21	1st	2-50.11	Original
13	4th	44.1	11th	2-22	1st	2-50.12	Original
13.1	8th	45	1st	2-23	Original	2-50.13	Original
13.2	Original	46	8th	2-24	Original	2-50.14	3rd
14	3rd	46.1	Original	2-25	2nd	2-50.15	3rd
14.1	Original	46.2	Original	2-26	2nd	2-50.16	3rd
15	4th	46.3	Original	2-27	1st*	2-50.17	3rd
16	2nd	47	6th	2-28	1st	2-50.18	3rd
17	4th	48	1st	2-29	1st	2-50.19	4th
17.1	2nd	1-1	5th	2-30	1st	2-50.20	3rd
18	7th	2-1	2nd	2-31	4th*	2-50.21	3rd
19	7th	2-2	4th	2-32	Original	2-50.22	3rd
20	4th	2-2.1	6th	2-33	2nd	2-50.23	3rd
21	3rd*	2-3	Original	2-34	2nd	2-50.24	3rd
22	3rd	2-4	Original	2-34.1	1st	2-50.25	1st
				2-35	1st		

* New or Revised Page

(This page filed under Transmittal No. 1392.)

Vice President, Federal Regulatory
1300 I Street NW, Washington, DC 20005

Issued: March 1, 2019

FACILITIES FOR INTERSTATE ACCESS

CHECK SHEET

<u>Page</u>	<u>Revision</u>	<u>Page</u>	<u>Revision</u>	<u>Page</u>	<u>Revision</u>	<u>Page</u>	<u>Revision</u>
2-50.26	1st	2-71.2.2	2nd	3-14	5th	4-35	Original
2-50.27	1st	2-71.3	3rd	3-15	1st	4-36	1st
2-50.28	1st	2-71.4	3rd	3-16	1st	4-37	Original
2-50.29	1st	2-71.5	3rd	3-17	2nd	4-38	Original
2-50.30	1st	2-71.6	3rd	3-17.1	9th	4-39	Original
2-50.31	1st	2-71.7	3rd	3-17.1.1	1st	4-40	1st
2-50.32	1st	2-71.8	3rd	3-17.2	7th	4-41	1st
2-50.33	1st	2-71.9	3rd	3-18	1st	4-42	Original
2-50.34	1st	2-71.10	3rd	3-19	6th	4-43	1st
2-50.35	1st	2-71.11	3rd	3-20	Original	4-44	1st
2-50.36	1st	2-71.12	4th	3-21	1st	4-45	1st
2-50.37	2nd	2-72	2nd			4-46	1st
2-50.38	1st	2-73	1st	4-1	4th	4-47	1st
2-50.39	1st	2-74	3rd	4-2	4th	4-48	Original
2-50.40	1st	2-75	2nd	4-3	3rd	4-49	1st
2-50.41	1st	2-76	Original	4-4	5th	4-50	1st
2-50.42	1st	2-77	1st	4-5	8th	4-51	4th
2-50.43	1st	2-78	1st	4-5.1	Original	4-52	2nd
2-50.44	1st	2-79	Original	4-6	1st	4-53	Original
2-50.45	1st	2-80	2nd	4-7	1st	4-54	Original
2-50.46	1st	2-81	Original	4-8	Original	4-55	3rd*
2-51	7th	2-82	Original	4-9	Original	4-56	Original
2-52	3rd	2-83	Original	4-10	1st	4-57	Original
2-53	3rd	2-84	Original	4-11	Original	4-58	1st
2-54	3rd	2-85	Original	4-12	Original	4-59	1st
2-55	3rd	2-86	Original	4-13	Original	4-60	3rd
2-56	3rd	2-87	Original	4-14	1st	4-61	1st
2-57	3rd	2-88	Original	4-15	1st	4-62	1st
2-58	3rd	2-89	Original	4-16	Original	4-63	Original
2-59	3rd	2-90	Original	4-17	Original	4-64	1st
2-60	3rd	3-1	2nd	4-18	1st	4-65	Original
2-61	3rd	3-2	3rd	4-19	1st	4-66	1st
2-61.1	1st	3-3	1st	4-20	1st	4-67	2nd*
2-61.2	1st	3-4	1st	4-21	1st	4-67.1	Original
2-62	4th	3-5	6th	4-22	1st	4-68	1st
2-63	5th	3-6	5th	4-23	1st	4-69	1st
2-64	4th	3-7	6th	4-24	1st	4-70	2nd
2-65	4th	3-7.1	1st	4-25	Original	4-71	2nd
2-66	4th	3-8	2nd	4-26	1st	4-72	1st
2-67	4th	3-8.1	Original	4-27	Original	4-73	Original
2-68	4th	3-9	3rd	4-28	1st	4-74	2nd
2-69	4th	3-10	13th*	4-29	4th	4-75	Original
2-70	4th	3-11	1st	4-30	2nd	4-76	1st
2-71	4th	3-12	3rd	4-31	Original	4-77	1st
2-71.1	2nd	3-12.1	Original	4-32	2nd	4-78	1st
2-71.2	2nd	3-13	15th	4-33	2nd	4-79	1st
2-71.2.1	2nd	3-13.1	2nd	4-34	Original		

* New or Revised page

(This page filed under Transmittal No. 1392.)

Vice President, Federal Regulatory
1300 I Street NW, Washington, DC 20005

Issued: March 1, 2019

FACILITIES FOR INTERSTATE ACCESS

CHECK SHEET

<u>Page</u>	<u>Revision</u>	<u>Page</u>	<u>Revision</u>	<u>Page</u>	<u>Revision</u>	<u>Page</u>	<u>Revision</u>
4-80	1st	4-107.1	5th	4-143	1st	4-181	10th
4-81	Original	4-107.2	1st	4-144	Original	4-181.1	2nd
4-82	Original	4-107.3	1st	4-145	Original	4-181.2	5th
4-83	6th	4-108	5th*	4-146	2nd	4-182	14th
4-84	4th	4-109	1st	4-147	Original	4-182.1	3rd
4-85	2nd	4-110	3rd*	4-148	4th*	4-183	10th
4-86	2nd	4-111	1st	4-149	Original	4-183.1	4th
4-87	1st	4-112	3rd	4-150	2nd	4-184	13th
4-88	Original	4-113	Original	4-151	2nd	4-184.1	2nd
4-89	2nd	4-114	Original	4-152	2nd	4-185	9th
4-90	3rd	4-115	Original	4-153	2nd	4-185.1	3rd
4-91	9th	4-116	Original	4-154	1st	4-186	13th
4-92	6th	4-117	Original	4-155	1st	4-187	13th
4-93	2nd	4-118	Original	4-156	1st	4-188	8th
4-94	5th	4-119	1st	4-157	1st	4-188.1	3rd
4-94.1	1st	4-120	1st	4-158	1st	4-188.2	3rd
4-94.2	1st	4-121	1st	4-159	1st	4-189	11th
4-94.3	1st	4-122	1st	4-160	1st	4-189.1	2nd
4-94.4	1st	4-123	Original	4-161	1st	4-190	8th
4-95	5th	4-124	Original	4-162	1st	4-191	11th
4-96	Original	4-125	Original	4-163	1st	4-191.1	3rd
4-97	Original	4-126	2nd	4-164	3rd	4-192	9th
4-98	4th	4-127	1st	4-164.1	2nd	4-192.1	4th
4-99	Original	4-128	2nd	4-165	6th	4-193	13th
4-100	1st	4-129	1st	4-166	7th	4-193.1	2nd
4-101	2nd	4-130	2nd	4-167	7th	4-194	8th
4-102	Original	4-130.1	Original	4-168	6th	4-194.1	3rd
4-102.1	1st	4-131	Original	4-169	6th	4-195	7th*
4-102.2	2nd	4-131.1	Original	4-170	5th	4-196	3rd
4-102.3	2nd	4-132	1st	4-171	14th	4-197	3rd
4-102.4	4th	4-133	1st	4-172	15th	4-198	3rd
4-103	1st	4-134	1st	4-173	15th	4-199	1st
4-104	2nd	4-135	2nd	4-174	15th	4-200	1st
4-104.1	Original	4-136	1st	4-175	21st	4-201	4th
4-105	4th	4-137	1st	4-176	23rd	4-202	3rd
4-105.1	3rd	4-138	1st	4-177	14th	4-203	17th
4-106	5th	4-139	2nd	4-178	12th	4-204	24th
4-106.1	3rd	4-140	1st	4-179	7th	4-205	24th
4-107	4th	4-141	Original	4-180	7th	4-206	24 th
		4-142	1st				

* New or Revised page

(This page filed under Transmittal No. 1392.)

Vice President, Federal Regulatory
1300 I Street NW, Washington, DC 20005

Issued: March 1, 2019

FACILITIES FOR INTERSTATE ACCESS

CHECK SHEET

<u>Page</u>	<u>Revision</u>	<u>Page</u>	<u>Revision</u>	<u>Page</u>	<u>Revision</u>	<u>Page</u>	<u>Revision</u>
4-207	17th	5-1	7th	5-27	3rd		
4-208	8th	5-1.1	5th	5-28	2nd		
4-209	5th	5-2	5th	5.28.1	2nd		
4-210	7th	5-3	6th*	5.28.2	Original		
4-211	7th	5-3.1	2nd	5-29	1st		
4-212	6th	5-4	3rd	5-30	Original		
4-213	5th	5-5	7th	5-31	5th		
4-214	5th	5-5.1	6th	5-32	8th		
4-215	5th	5-5.2	3rd	5-32.1	3rd		
4-216	7th	5-6	8th	5-33	3rd		
4-217	6th	5-6.1	2nd				
4-218	6th	5-7	4th*				
4-219	7th	5-7.1	3rd				
4-220	7th	5-8	6th				
4-221	7th	5-9	1st				
4-222	7th	5-10	2nd				
4-222.1	2nd	5-11	8th				
4-223	8th	5-11.1	5th				
4-224	7th	5-12	9th*				
4-225	7th	5-13	3rd*				
4-226	6th	5-14	1st				
		5-15	1st				
		5-16	4th				
		5-17	Original				
		5-18	3rd				
		5-19	1st				
		5-20	2nd				
		5-20.1	1st				
		5-21	2nd				
		5-21.1	3rd				
		5-22	4th				
		5-23	6th				
		5-24	6th				
		5-25	6th				
		5-26	1st				

* New or Revised page

(This page filed under Transmittal No. 1392.)

Vice President, Federal Regulatory
1300 I Street NW, Washington, DC 20005

Issued: March 1, 2019

FACILITIES FOR INTERSTATE ACCESS

CHECK SHEET

<u>Page</u>	<u>Revision</u>	<u>Page</u>	<u>Revision</u>	<u>Page</u>	<u>Revision</u>	<u>Page</u>	<u>Revision</u>
5-34	3rd	5-71	3rd	5-100	1st	5-125.22	1st
5-35	1st	5-72	4th*	5-101	1st	5-125.23	1st
5-36	Original	5-72.1	1st	5-102	2nd	5-125.24	1st
5-37	3rd	5-73	3rd	5-103	1st	5-125.25	1st
5-38	1st	5-74	2nd	5-104	1st	5-125.26	1st
5-39	1st	5-74.1	3rd	5-105	1st	5-125.27	1st
5-40	1st	5-75	Original	5-106	1st	5-125.28	1st
5-41	3rd	5-76	5th	5-107	1st	5-125.29	1st
5-42	3rd	5-76.1	Original	5-108	1st	5-125.30	1st
5-42.1	1st*	5-77	6th*	5-109	1st	5-125.31	1st
5-43	6th	5-78	1st	5-110	1st	5-125.32	1st
5-44	5th	5-79	3rd	5-111	1st	5-125.33	1st
5-45	2nd*	5-79.1	1st	5-112	7th	5-125.34	1st
5-46	8th	5-80	3rd	5-113	4th	5-126	8th
5-46.1	7th	5-81	7th	5-114	4th	5-127	18th
5-47	11th	5-81.1	3rd	5-115	7th	5-127.1	23rd
5-47.1	1st	5-82	1st	5-115.1	1st	5-127.2	11th
5-48	4th	5-83	1st	5-116	4th	5-127.3	8th*
5-48.1	1st*	5-84	1st	5-117	7th	5-128	13th
5-49	2nd*	5-85	1st	5-118	2nd	5-128.1	9th
5-49.1	Original*	5-86	2nd	5-119	1st	5-129	13th
5-50	2nd*	5-86.1	1st	5-120	2nd	5-129.1	9th
5-51	2nd*	5-86.2	1st	5-121	3rd	5-130	17th
5-52	2nd*	5-87	4th	5-122	1st	5-131	13th
5-53	2nd*	5-87.1	2nd	5-123	3rd	5-131.1	7th
5-54	2nd*	5-87.2	Original	5-124	1st	5-132	13th
5-55	2nd	5-88	2nd	5-125	2nd	5-132.1	8th
5-56	1st	5-88.1	2nd	5-125.1	1st	5-133	13th
5-57	2nd	5-88.1.1	Original	5-125.2	1st	5-133.1	8th
5-58	4th*	5-88.2	1st	5-125.2.1	1st		
5-58.1	1st	5-89	7th	5-125.3	1st		
5-59	2nd	5-89.1	1st	5-125.4	1st		
5-59.1	1st	5-90	2nd	5-125.5	Original		
5-60	2nd	5-90.1	1st	5-125.6	1st		
5-61	3rd*	5-90.2	1st	5-125.7	1st		
5-62	4th	5-90.3	1st	5-125.8	1st		
5-62.1	3rd	5-90.4	1st	5-125.9	1st		
5-63	3rd	5-91	4th	5-125.10	1st		
5-64	3rd	5-91.1	5th	5-125.11	1st		
5-65	2nd	5-91.1.1	Original	5-125.12	1st		
5-65.1	1st	5-91.2	3rd	5-125.13	1st		
5-66	1st	5-92	1st	5-125.14	1st		
5-67	1st	5-93	3rd	5-125.15	1st		
5-68	3rd	5-94	2nd	5-125.16	1st		
5-69	2nd	5-95	1st	5-125.17	1st		
6-69.1	1st	5-96	1st	5-125.18	1st		
5-70	2nd	5-97	1st	5-125.19	1st		
5-70.1	1st	5-98	1st	5-125.20	1st		
		5-99	1st	5-125.21	1st		

* New or Revised page

(This page filed under Transmittal No. 1392.)
Vice President, Federal Regulatory
1300 I Street NW, Washington, DC 20005

Issued: March 1, 2019

FACILITIES FOR INTERSTATE ACCESS

CHECK SHEET

Page	Revision	Page	Revision	Page	Revision
5-134	13th	5-160	6th	5-188.1	7th
5-134.1	8th	5-161	4th	5-188.2	7th
5-135	13th	5-162	9th	5-188.3	7th
5-135.1	8th	5-162.1	6th	5-189	8th
5-136	13th	5-162.2	5th	5-189.1	7th
5-136.1	8th	5-162.3	5th	5-189.2	7th
5-137	14th	5-163	7th	5-189.3	7th
5-137.1	7th	5-164	7th	5-190	8th
5-138	13th	5-165	7th	5-190.1	7th
5-138.1	8th	5-166	7th	5-190.2	7th
5-139	Original	5-167	7th	5-190.3	7th
5-140	17th	5-168	8th	5-191	8th
5-140.1	17th	5-169	8th	5-191.1	7th
5-140.2	10th	5-170	8th	5-191.2	7th
5-141	17th	5-171	8th	5-191.3	7th
5-141.1	17th	5-172	7th	5-192	8th
5-141.2	10th	5-173	7th	5-193	8th
5-142	17th	5-174	7th	5-194	8th
5-142.1	17th	5-175	7th	5-195	7th
5-142.2	10th	5-176	8th	5-196	8th
5-143	17th	5-177	8th	5-196.1	7th
5-143.1	17th	5-178	8th	5-197	8th
5-143.2	10th	5-179	8th	5-197.1	8th*
5-144	10th	5-180	8th	5-198	8th
5-144.1	6th	5-181	8th	5-198.1	7th
5-145	10th	5-182	8th	5-199	21st
5-145.1	7th	5-183	8th	5-199.1	24th
5-146	10th	5-184	7th	5-199.2	16th
5-146.1	6th	5-185	7th	5-199.3	6th*
5-147	7th	5-186	8th	5-200	20th
5-148	6th	5-186.1	7th	5-200.1	21st
5-149	7th	5-186.2	7th	5-200.2	14th
5-150	8th	5-186.3	7th	5-200.3	9th*
5-151	7th	5-187	8th		
5-152	8th	5-187.1	7th		
5-153	8th	5-187.2	7th		
5-154	6th	5-187.3	7th		
5-155	8th	5-188	8th		
5-155.1	7th				
5-156	8th				
5-156.1	7th				
5-157	8th				
5-157.1	7th*				
5-158	7th				
5-159	6th				

* New or Revised page

(This page filed under Transmittal No. 1392.)

Vice President, Federal Regulatory
1300 I Street NW, Washington, DC 20005

Issued: March 1, 2019

FACILITIES FOR INTERSTATE ACCESS

CHECK SHEET

Page	Revision	Page	Revision	Page	Revision	Page	Revision
5-201	19th	5-217	12th	5-229	20th	5-241	19th
5-201.1	21st	5-217.1	15th	5-229.1	24th	5-241.1	21st
5-201.2	14th	5-217.2	10th	5-229.2	10th	5-241.2	14th
5-201.3	6th	5-218	12th	5-229.3	8th *	5-241.3	9th
5-202	12th	5-218.1	16th	5-230	11th	5-242	20th
5-202.1	8th	5-218.2	10th	5-230.1	12th	5-242.1	22nd
5-202.2	5th	5-219	12th	5-230.2	9th	5-242.2	16th
5-203	23rd	5-219.1	15th	5-231	11th	5-242.3	10th*
	5.7	5-219.2	10th	5-231.1	12th	5-243	19th
	Rates and	5-220	21st	5-231.2	9th	5-243.1	21st
Charges (Cont'd)		5-220.1	24th	5-232	11th	5-243.2	14th
5-203.1	12th	5-220.2	11th	5-232.1	13th	5-243.3	9th
5-204	24th	5-220.3	9th*	5-232.2	9th	5-244	21st
5-204.1	14th	5-221	21st	5-233	11th	5-244.1	22nd
5-205	11th	5-221.1	24th	5-233.1	13th	5-244.2	15th
5-205.1	7th	5-221.2	12th	5-233.2	8th	5-244.3	10th*
5-206	8th	5-221.3	9th*	5-234	22nd	5-245	19th
5-206.1	4th	5-222	21st	5-234.1	12th	5-245.1	22nd
5-207	8th	5-222.1	26th	5-235	21st	5-245.2	14th
5-207.1	4th	5-222.2	12th	5-235.1	10th	5-245.3	9th
5-207.2	3rd*	5-222.3	8th	5-235.2	7th	5-246	24th
5-208	20th	5-223	21st	5-235.2.1	5th	5-246.1	26th
5-208.1	22nd	5-223.1	24th	5-235.2.2	1st	5-246.2	14th
5-208.2	13th	5-223.2	11th	5-235.3	4th	5-246.3	10th*
5-208.3	9th*	5-223.3	8th	5-235.3.1	1st	5-247	23rd
5-209	24th	5-224	19th	5-235.3.2	1st	5-247.1	25th
5-209.1	12th	5-224.1	23rd	5-235.4	4th	5-247.2	14th
5-210	18th	5-224.2	9th	5-235.4.1	1st	5-247.2.1	9th
5-210.1	12th	5-224.3	8th*	5-235.4.2	5th	5-247.3	14th
5-211	9th	5-225	19th	5-235.5	8th	5-247.3.1	8th
5-211.1	5th	5-225.1	23rd	5-235.5.1	1st	5-247.4	11th
5-212	10th	5-225.2	10th	5-236	9th	5-247.5	12th*
5-212.1	13th	5-225.3	9th*	5-236.1	5th	5-247.6	15th
5-212.2	6th	5-226	20th	5-237	19th	5-247.6.1	9th
5-212.3	7th	5-226.1	24th	5-237.1	20th	5-247.7	12th
5-213	7th	5-226.2	10th	5-238	20th	5-247.8	13th*
5-213.1	8th	5-226.3	10th*	5-239	12th	5-248	6th
5-213.2	3rd	5-227	21st	5-239.1	3rd	5-249	7th
5-214	11th	5-227.1	23rd	5-240	21st	5-250	11th
5-214.1	15th	5-227.2	9th	5-240.1	22nd	5-250.1	7th
5-214.2	9th	5-227.3	8th*	5-240.2	14th		
5-215	11th	5-228	23rd	5-240.3	10th*		
5-215.1	14th	5-228.1	26th				
5-215.2	9th	5-228.2	13th				
5-216	11th	5-228.3	8th*				
5-216.1	14th						
5-216.2	10th						

* New or Revised page

(This page filed under Transmittal No. 1392.)

Vice President, Federal Regulatory
1300 I Street NW, Washington, DC 20005

Issued: March 1, 2019

FACILITIES FOR INTERSTATE ACCESS

CHECK SHEET

Page	Revision	Page	Revision	Page	Revision	<u>Page</u>	<u>Revision</u>
19-1	1st	19-32	4th	20-23	3rd*	20-62	2nd
19-2	7th	19-33	4th	20-24	4th	20-63	7th
19-2.1	6th	19-34	4th	20-25	3rd	20-64	8th
19-2.1.1	2nd	19-35	4th	20-26	7th	20-65	8th
19-2.2	3rd	19-36	8th	20-27	2nd*	20-66	6th
19-2.3	7th	19-37	6th	20-28	3rd	20-67	6th
19-3	6th	20-1	9th	20-29	4th	20-68	7th
19-4	7th	20-1.1	5th	20-30	4th	20-69	7th
19-5	10th	20-1.2	2nd	20-31	2nd	20-70	7th
19-6	6th	20-2	2nd	20-32	2nd	20-71	7th
19-7	8th	20-3	11th	20-33	2nd	20-72	8th
19-8	6th	20-3.1	Original	20-34	2nd	20-73	9th
19-9	6th	20-4	6th	20-35	2nd	20-74	8th
19-9.1	6th	20-5	2nd	20-36	2nd		
19-10	10th	20-6	8th	20-37	3rd		
19-11	7th	20-6.1	Original	20-38	2nd		
19-11.1	5th	20-7	10th	20-39	2nd		
19-12	3rd	20-7.1	14th	20-40	2nd		
19-13	4th	20-7.1.1	2nd	20-41	4th		
19-14	4th	20-7.2	3rd	20-42	2nd		
19-15	4th	20-8	9th	20-43	2nd		
16-16	3rd	20-8.1	3rd	20-44	2nd		
19-17	3rd	20-9	8th	20-45	2nd		
19-18	4th	20-9.1	4th	20-46	2nd		
19-19	3rd	20-9.2	1st	20-47	4th		
19-19.1	5th	20-10	2nd	20-48	2nd		
19-20	6th	20-11	3rd	20-49	2nd		
19-20.1	4th	20-12	1st	20-50	2nd		
19-21	5th	20-13	1st	20-51	3rd		
19-22	6th	20-14	1st	20-52	2nd		
19-23	5th	20-15	1st	20-53	2nd		
19-24	5th	20-15.1	1st	20-54	2nd		
19-25	6th	20-16	1st	20-55	2nd		
19-26	6th	20-16.1	Original	20-56	2nd		
19-27	4th	20-17	Original	20-57	2nd		
19-28	4th	20-18	Original	20-58	2nd		
19-29	4th	20-19	2nd*	20-59	2nd		
19-30	4th	20-20	2nd*	20-60	2nd		
19-31	4th	20-21	3rd*	20-61	2nd		
		20-22	2nd*				

* New or Revised page

(This page filed under Transmittal No. 1392.)

Vice President, Federal Regulatory
1300 I Street NW, Washington, DC 20005

Issued: March 1, 2019

FACILITIES FOR INTERSTATE ACCESS

CHECK SHEET

<u>Page</u>	<u>Revision</u>	<u>Page</u>	<u>Revision</u>	<u>Page</u>	<u>Revision</u>	<u>Page</u>	<u>Revision</u>
22-1	5th	23-1	1st	23-35	1st	23-75	Original
22-2	5th	23-2	1st	23-36	1st	23-76	1st
22-3	1st	23-3	3rd	23-37	3rd	23-77	1st
22-4	1st	23-4	4th	23-38	1st	23-78	Original
22-5	2nd	23-5	4th	23-39	1st	23-79	1st
22-6	2nd	23-6	1st	23-40	2nd	23-80	1st
22-7	2nd	23-7	3rd	23-41	1st	23-81	1st
22-8	2nd	23-8	1st	23-42	1st	23-82	Original
22-9	2nd	23-9	1st	23-42.1	Original	23-83	Original
22-10	2nd	23-10	1st	23-42.2	Original	23-84	2nd
22-11	2nd	23-10.1	Original	23-43	2nd	23-85	2nd
22-12	2nd	23-10.2	Original	23-44	1st	23-86	1st
22-13	2nd	23-10.3	Original	23-45	Original	23-87	Original
22-14	2nd	23-11	2nd	23-46	Original		
22-15	2nd	23-12	Original	23-47	Original	24-1	2nd
22-16	2nd	23-13	2nd	23-48	Original	24-2	1st
22-17	2nd	23-14	3rd	23-49	Original	24-3	1st
22-18	1st	23-15	4th	23-50	1st	24-4	1st
22-19	1st	23-16	2nd	23-51	Original	24-5	1st
22-20	1st	23-17	2nd	23-52	Original	24-6	1st
22-21	1st	23-18	2nd	23-53	Original	24-7	4th
22-22	1st	23-19	2nd	23-54	Original	24-8	4th
22-23	1st	23-20	2nd	23-55	Original	24-9	Original
22-24	1st	23-21	Original	23-56	Original	24-10	Original
22-25	2nd	23-22	1st	23-57	Original		
22-26	2nd	23-23	1st	23-58	Original		
22-27	1st	23-24	1st	23-59	Original		
		23-25	3rd*	23-60	1st		
		23-26	3rd*	23-61	1st		
		23-27	1st	23-62	1st		
		23-28	1st	23-63	1st		
		23-29	1st	23-64	1st		
		23-30	Original	23-65	1st		
		23-31	Original	23-66	Original		
		23-32	Original	23-67	Original		
		23-33	Original	23-68	1st		
		23-34	Original	23-69	1st		
		23-34.1	Original	23-70	1st		
		23-34.2	Original	23-71	Original		
		23-34.3	Original	23-72	Original		
				23-73	1st		
				23-74	Original		

* New or Revised page

(This page filed under Transmittal No. 1392.)

Vice President, Federal Regulatory
1300 I Street NW, Washington, DC 20005

Issued: March 1, 2019

FACILITIES FOR INTERSTATE ACCESS

TABLE OF CONTENTS

5. SPECIAL ACCESS

5.4 Description of Supplemental Features (Cont'd)

- 5.4.6 Improved Return Loss
- 5.4.7 Voiceband Facility Switching Arrangement
- 5.4.8 Automatic Protection Switch
- 5.4.9 Improved Termination Option
- 5.4.10 Improved Equal Level Echo Path Loss Option - ELEPL-2
- 5.4.11 Digital Data Service Secondary Channel

5.5 Description of Multiplexing Arrangements

- (A) (Reserved for Future Use)
- (B) (Reserved for Future Use)
- (C) (Reserved for Future Use)
- (D) DS1 to Voice
- (E) (Reserved for Future Use)
- (F) (Reserved for Future Use)
- (G) DS3 to DS1 (T)
- (H) (Reserved for Future Use)
- (I) (Reserved for Future Use)
- (J) Digital Data Carrier Multiplexer
- (K) Digital Data Subrate Multiplexer
- (L) (Reserved for Future Use) (C)

(This page filed under Transmittal No. 1392.)

Vice President, Federal Regulatory
1300 I Street NW, Washington, DC 20005

Issued: March 1, 2019

FACILITIES FOR INTERSTATE ACCESS

TABLE OF CONTENTS

5.	<u>SPECIAL ACCESS</u> (Cont'd)	
5.6	<u>Rate Regulations</u> (Cont'd)	
5.6.8	(Reserved for Future Use)	(C) (D) ----- (D)
5.6.9	Special Access Surcharge	
5.6.10	(Reserved for Future Use)	(C)
5.6.11	DS3 High Capacity Service	
	(A) DS3 Rate Structure	
	(B) Minimum Service Periods	
	(C) Expiration of Service Period	
	(D) Discontinuance Without Liability - DS3 Minimum Service Period	
	(E) Discontinuance With Liability - DS3 Minimum Service Period	
	(F) Notification of Discontinuance	
	(G) Upgrade to Higher Speed Service	
	(H) DS3 Multiplexer Cross Connect Arrangement	
	(I) Partitioned Billing Arrangement (PBA)	

(This page filed under Transmittal No. 1392.)

Vice President – Federal Regulatory
1300 I Street, NW, Washington, DC 20005

Issued: March 1, 2019

FACILITIES FOR INTERSTATE ACCESS

2. GENERAL REGULATIONS (Cont'd)2.5 Connections2.5.1 General

Equipment and systems (i.e., terminal equipment, multiline terminating systems, and communications systems) may be connected with Switched and Special Access furnished by the Telephone Company where such connection or interconnection is made in accordance with the provisions specified in the NECA Technical Reference Publication AS No. 1, Issue II,* and in 2.1 preceding.

2.5.2 Standard Access Service Connections

Access services are provided by means of wire, fiber optics, radio or any other suitable technology or a combination thereof. Special Access service connections are made directly or through a Telephone Company hub where bridging or multiplexing functions are performed. These connections can either be analog or digital. (T) (D)

2.5.3 Expanded Interconnection Service (EIS) - Fiber Optic

Fiber Optic EIS provides a customer with space and associated requirements such as power and environmental conditioning within or near a Telephone Company wire center or access tandem to locate certain fiber optic facilities and equipment, and an interconnection with certain Telephone Company provided facilities.

EIS will be provided subject to the regulations and rates and charges set forth in Section 17.

2.5.4 Expanded Interconnection Service (EIS) - Microwave

Microwave EIS provides a customer with space and associated requirements such as power and environmental conditioning within a Telephone Company wire center or access tandem to locate certain microwave facilities and equipment, and a connection to certain Telephone Company provided facilities.

Customer-provided microwave facilities, equipment and support structures may be located in, on or above the exterior walls and roof of Telephone Company wire centers or access tandems. Such interconnection must be made in accordance with the provisions specified in 2.1. These interconnections will be provided subject to the regulations and rates and charges set forth in Section 17.

* PUB AS No. 1, Issue II, replaces PUB AS No. 1 in its entirety.

(This page filed under Transmittal No. 1392.)

Vice President, Federal Regulatory
1300 I Street NW, Washington, DC 20005

Issued: March 1, 2019

FACILITIES FOR INTERSTATE ACCESS

2. GENERAL REGULATIONS (Cont'd)2.6 Definitions (Cont'd)Customer Designated Location

The term "Customer Designated Location" (CDL) denotes a location specified by the customer for the purpose of terminating FIA services. The Telephone Company must have access to the location to perform installation, testing, and maintenance functions. The customer may or may not have access to the location. CDLs include locations such as customer premises, end user premises, customer repeater stations, customer microwave towers, a Telephone Company's first point of switching, some other point where Telephone Company testing can occur, etc. A CDL may be designated by the customer for Switched Access, Special Access, or both in combination. Customer transmission facilities and equipment may be terminated in Telephone Company wire centers or access tandems under EIS arrangements, as defined in Section 17. Telephone Company Switched and Special Access Services may be interconnected to such customer equipment using Cross Connect arrangements as described in Section 4.5.3 and Section 5.1.1(D), respectively.

D-Conditioning

The term "D-Conditioning" denotes a Telephone Company special treatment of the transmission path in order to control C-notched noise and intermodulation distortion.

Daily Busiest Hour

The term "Daily Busiest Hour" denotes the highest usage hour for each day with the reading taken on the clock hour or half hour. The clock hour or half hour selection varies from day to day, depending upon the usage measured. The Daily Busiest Hour is also known as the Bouncing Busy Hour.

Data Transmission (107-Type) Test Line

The term "Data Transmission (107-Type) Test Line" denotes an arrangement which provides for the connection to a signal source which provides test signals for one-way testing of data and voice transmission parameters.

(D)
|
|
(D)Dual Tone Multifrequency Address Signaling

The term "Dual Tone Multifrequency (DTMF) Address Signaling" denotes a type of signaling that is an optional feature of FGA and BSA-A. It may be utilized when FGA or BSA-A is being used in the terminating direction. An office arranged for signaling would expect to receive address signals from the IC in the form of DTMF format.

Echo Path Loss

The term "Echo Path Loss" denotes the measure of reflected signal at a four-wire interface without regard to the send and receive Transmission Level Point (TLP).

Echo Return Loss

The term "Echo Return Loss" denotes a frequency weighted measure of return loss over the middle of the voiceband (approximately 500 to 2500 Hz) where talker echo is most annoying.

(This page filed under Transmittal No. 1392.)

Vice President, Federal Regulatory (T)
1300 I Street, NW, Washington, DC 20005 (T)

Issued: March 1, 2019

FACILITIES FOR INTERSTATE ACCESS

2. GENERAL REGULATIONS (Cont'd)2.6 Definitions (Cont'd)Geographically Aggregated Rate (GAR)

The term "Geographically Aggregated Rate" denotes a situation in which the rates and charges for a service offering, for which there is currently no demand, are developed based upon the aggregated revenue requirement and demand for more than one study area. Upon receipt of a request for service, the current geographically averaged rates will be redeveloped to include the new study area.

Example: Study areas A, B and C have been geographically aggregated. Geographically averaged rates for A and B were developed based upon their aggregated revenue requirement and demand, while Area C, marked "GAR", has no current demand. Should C receive a request for service, the current geographically averaged rates will be redeveloped to include C's revenue and demand. The redeveloped rates and charges will now be applicable to customers on A, B and C.

Ground Start Supervisory Signaling

The term "Ground Start Supervisory Signaling" denotes a type of signaling which provides for the application of ground on the tip side at the point of termination (assuming no signaling conversion has been provided by the Telephone Company) as an initial seizure signal before the application of ringing in the originating direction (towards the customer from the end office).

(D)
|
|
(D)Immediately Available Funds

The term "Immediately Available Funds" denotes a corporate or personal check drawn on a bank account that has completed the clearing process and funds which are available for use by the receiving party on the same day on which they are received, including U.S. Federal Reserve bank wire transfers and Automated Clearinghouse (ACH) payments.

Individual Case Basis

The term "Individual Case Basis" (ICB) denotes a condition where the regulations, if applicable, rates and charges for an offering under the provisions of this tariff are developed based on the circumstances in each case.

Information Service Provider

The term "Information Service Provider" denotes one who offers a capability for generating, acquiring, storing, transforming, processing, retrieving, utilizing, or making available information which may be conveyed via telecommunications, except that such service does not include (1) any use of any such capability for the management, control, or operation of a telecommunications system or the management of a telecommunications service, or (2) the provision of time, weather, and such other similar audio services that are offered by any Verizon Telephone Company.

(This page filed under Transmittal No. 1392.)

Vice President, Federal Regulatory
1300 I Street NW, Washington, DC 20005

Issued: March 1, 2019

FACILITIES FOR INTERSTATE ACCESS

2. GENERAL REGULATIONS (Cont'd)

2.8 Service Level Agreements (Cont'd)

2.8.1 Basic Service Level Agreements (Basic SLAs) (Cont'd)

2.8.1.1 Credit Allowance for FIA Interruptions

(A) General

A FIA is interrupted when it becomes unusable to the customer because of a failure of a component used to furnish FIA under this tariff, or when the service is preempted as a result of invoking NSEP Treatment or when the application of protective controls interrupt all transmission paths as set forth in 4.2.9 following. An interruption period starts when the Telephone Company personnel are notified by the customer that the FIA is inoperative.

The credit allowance(s) for an interruption or for a series of interruptions will be computed based upon the billing method which applies to the service being credited. In no case will the credit allowance for service interruptions exceed the applicable charges for the billing period during which the interruption occurred.

Subject to Section 2.8.4(B) following, in case of an interruption to any service, credit allowance for the period of interruption shall be as follows:

- (1) For Special Access services other than Expanded Interconnection, and for Switched Access Entrance Facilities, Direct-Trunked Transport and Multiplexing services a credit allowance will be made for an interruption period of 30 minutes or more. The allowance will be calculated at the rate of 1/1440 of the monthly charge for the portion of the FIA affected, for each 30 minutes or major fraction thereof that the interruption continues. A major fraction is considered to be sixteen minutes or more beyond the 30 minute period.

(D)
|
|
(D)

(D)
(D)

(This page filed under Transmittal No. 1392.)

Vice President, Federal Regulatory
1300 I Street NW, Washington, DC 20005

Issued: March 1, 2019

FACILITIES FOR INTERSTATE ACCESS

2. GENERAL REGULATIONS (Cont'd)2.8 Service Level Agreements (Cont'd)2.8.1 Basic Service Level Agreements (Basic SLAs) (Cont'd)2.8.1.1 Credit Allowance for FIA Interruptions (Cont'd)(A) General (Cont'd)

- (2) Except as noted, all Special Access Services will be eligible for a credit allowance for each occurrence of a service interruption period greater than 30 minutes. The maximum credit allowance will be \$200.00 for each out of service condition within the Telephone Company's facilities and will not exceed the monthly charge for the interrupted service. The credit allowance will not be applied more than once per calendar month. This credit allowance is applicable in all jurisdictions. The credit allowance is in addition to the credit allowance in 2.8.1.1(A)(1) and 2.8.1.1(A)(2). A credit allowance will not be extended in accordance with conditions in 2.1.3(G) and 2.8.1.1(B) for repair of Telephone Company owned facilities. (T)

The exceptions to this credit allowance are Miscellaneous Special Access Services in 5.8 and Individual Case Basis Services in 5.9. (D)

* Section 2.8.1.1(A)(3) is not available for Special Access Services installed after June 1, 2006. The preceding sentence applies to both Special Access Services that are provided on a month-to-month basis and Special Access Services that are provided under a Discount Plan (as defined below).

For Special Access Services installed on or before June 1, 2006, Section 2.8.1.1(A)(3) will not be available as follows:

- (a) For Special Access Services provided on a month-to-month basis, after June 1, 2006.
- (b) For Special Access Services provided under a Discount Plan (as defined below), after the date of expiration, termination, or cancellation of the Discount Plan commitment period that is in effect on June 1, 2006.
- (c) For Special Access Services provided under a Discount Plan (as defined below) that are covered by a National Service Level Agreement Plan, during the period that a customer participates in such National Service Level Agreement Plan. The customer has the option to subscribe to National Service Level Agreement Plans as set forth in Section 2.8.3 following. Nothing in this paragraph (c) shall in any way limit the effect of paragraph (b) preceding.

As used in this note, "Discount Plan" means any tariff arrangement for the provision of Special Access Services other than on a month-to-month basis.

For any month for which a Special Access Service receives a credit allowance under Section 2.8.1.1(A)(3), that Special Access Service shall not receive a credit allowance under Section 2.8.1.1 (A)(4).

(This page filed under Transmittal No. 1392.)

Vice President, Federal Regulatory
1300 I Street NW, Washington, DC 20005

Issued: March 1, 2019

FACILITIES FOR INTERSTATE ACCESS

2. GENERAL REGULATIONS (Cont'd)2.8 Service Level Agreements (Cont'd)2.8.1 Basic Service Level Agreements (Basic SLAs) (Cont'd)2.8.1.1 Credit Allowance for FIA Interruptions (Cont'd)(A) General (Cont'd)

- (4) For certain Special Access services, a Special Access Service Guarantee (SASG) credit allowance will apply in the event that such services experience a service interruption of four or more consecutive hours except as specified in 2.8.4(B) following. The SASG credit allowance will apply to Voiceband, Digital Data Service (DDS), and High Capacity Digital DS1 & DS3 Special Access services (collectively, Special Access Services). (D)

The customer has the option to subscribe to National SLA Plans as set forth in Section 2.8.3 following. When a customer subscribes to a National SLA Plan, SASG credit allowances under this Section 2.8.1.1(A)(4) do not apply to services covered by the National SLA Plan.

If a Special Access Service is eligible for an SASG credit allowance, the Telephone Company shall provide the applicable credit amount as set forth in the table following. The Telephone Company shall bill customer the applicable monthly rate for the Special Access Service, and if customer is eligible to receive the SASG credit allowance, the customer shall receive the SASG credit in a later invoice. Except as stated in this tariff, the SASG credit allowance is in addition to any other credit allowances available under this Section 2.8.1.1. The maximum amount of all credit allowances available under this Section 2.8.1.1 for a Special Access Service for a given billing period shall not exceed the total applicable monthly charge paid by the customer for such Special Access Service. The monthly charge will consist of all applicable rate elements charged to the circuit experiencing the service interruption. The SASG credit allowance can only be applied once per month on a per circuit basis. For multi-point circuits, the SASG credit allowance will apply to each leg of the circuit that experiences a service interruption.

(This page filed under Transmittal No. 1392.)

Vice President, Federal Regulatory
1300 I Street NW, Washington, DC 20005

Issued: March 1, 2019

FACILITIES FOR INTERSTATE ACCESS

3. ORDERING OPTIONS FOR FIA (Cont'd)3.2 Access Service Request (Cont'd)3.2.2 ASR Modifications (Cont'd)(A) Service Date Change Charge (Cont'd)

(USOC)		(OMC)	
<u>Jurisdiction</u>		<u>Rate</u>	
Pennsylvania			
Special Access			
Price Cap		\$62.88	
Price Bands A, B, and C		150.00	(I)
All Other Services		62.88	
Virginia			
Special Access			
Price Cap		62.40	
Price Bands A, B, and C		150.00	(I)
All Other Services		62.40	

(This page filed under Transmittal No. 1392.)

Vice President, Federal Regulatory
1300 I Street NW, Washington, DC 20005

Issued: March 1, 2019

FACILITIES FOR INTERSTATE ACCESS

4. SWITCHED ACCESS (Cont'd)4.2 Description of Switched Access (Cont'd)4.2.3 Description of Switched Transport(A) General

- (1) Switched Transport provides the transmission of Switched Access communications including SAC Access Service, between the CDL and the originating or terminating end office switch(es) in the Access Area with one exception. Switched Transport associated with FGA or BSA-A 1+ terminating traffic provides for the transmission of Switched Access outside the Access Area, however within the LATA. Switched Transport is comprised of the following rate elements; an Entrance Facility Rate, a Direct-Trunked Transport Rate, a Tandem-Switched Transport Rate, and an Interconnection Rate. A Dedicated Switched Access Transport Rate is associated with CCS7 Access Service. An EIS Cross Connect rate applies where Switched Access is interconnected with a customer's transmission facilities in accordance with Section 17.

(D)

The Entrance Facility Rate is assessed upon customers for the use of Telephone Company Voiceband, DS1 and DS3 high capacity facilities, including interface arrangements, between the point of termination at the Customer Designated Location (CDL) and the Telephone Company's serving wire center. The Entrance Facility is further described in 4.2.3(B).

The Direct-Trunked Transport Rate is assessed upon customers for the use of Voiceband, DS1 and DS3 high capacity transport facilities dedicated to a single customer between a serving wire center and end office (including host end offices), end offices used to provide Tandem Switch Signaling, between a serving wire center and a Telephone Company Hub for multiplexing purposes, between two Telephone Company hubs, between a serving wire center and a Directory Assistance Center, between a Telephone Company Hub and an end office and between a serving wire center and a Telephone Company access tandem. The Direct-Trunked Transport Rate is flat-rated and has both distance-sensitive and nondistance-sensitive components. Direct-Trunked Transport is further described in 4.2.3(C).

A Dedicated Trunk Port is applicable to the purchase of dedicated trunks terminated by that port. The Dedicated Trunk Port provides for the termination of a dedicated trunk at the end office or access tandem. The Dedicated Trunk Port is a flat rated charge assessed on a per tunk basis. The rate is determined based on whether the trunk is Voiceband or DS1.

(D)
(D)

(This page filed under Transmittal No. 1392.)

Vice President, Federal Regulatory
1300 I Street NW, Washington, D.C. 20005

Issued: March 1, 2019

FACILITIES FOR INTERSTATE ACCESS

4. SWITCHED ACCESS (Cont'd)

4.2 Description of Switched Access (Cont'd)

4.2.3 Description of Switched Transport (Cont'd)

(F) Multiplexing

Multiplexing provides for arrangements to convert a single higher capacity or bandwidth circuit for bulk transport to several lower capacity or bandwidth circuits. Monthly rates and nonrecurring charges for multiplexing apply as follows: 1) the DS3/DS1 Multiplexing Charge applies to all DS3 to DS1 multiplexing arrangements that are located in a Telephone Company wire center; 2) the DS1/Voice Multiplexing Charge applies to all DS1 Entrance Facility and Direct-Trunked Transport circuits that terminate in an analog office and where the multiplexer performs DS1/Voice multiplexing functions; and 3) a Multiplexing Charge will always apply when FGA is provisioned on a Switched DS1 and on High Capacity shared use switched and special access facilities.

(T)
(D)

Listed below are the multiplexing arrangements offered with switched access.

- DS1 to Voice

An arrangement that multiplexes twenty-four voice grade circuits to a single DS1 digital circuit at a rate of 1.544 Mbps, or multiplexes a single DS1 digital circuit at a rate of 1.544 Mbps to twenty-four voice grade circuits.

- DS3 to DS1

An arrangement that multiplexes at a Telephone Company Hub twenty-eight DS1 digital circuits to a single DS3 digital circuit at rate of 44.736 Mbps, or multiplexes a single DS3 digital circuit at a rate of 44.736 Mbps to twenty-eight DS1 digital circuits.

(D)
|
|
(D)

(D)
(D)

(This page filed under Transmittal No. 1392.)

Vice President, Federal Regulatory
1300 I Street NW, Washington, D.C. 20005

Issued: March 1, 2019

FACILITIES FOR INTERSTATE ACCESS

4. SWITCHED ACCESS (Cont'd)4.4 Payment Arrangements and Credit Allowances4.4.1 Cancellation of Applications

A customer may cancel an application for Switched Access in Accordance with the regulations and charges in Section 3.

4.4.2 Credit Allowances

(A) Allowances for service interruptions are in 2.8.1.1.

(B) Usage Sensitive Service credit will be included in the FGA or BSA-A monthly bills rendered to customers to reflect usage charges collected from their end users for interstate calls. The amount of credit applies to the End Office Switching rate element for originating calls. When the customer is provided originating only FGA or BSA-A service, the credit will apply to the actual access minutes measured.

No credit will apply for terminating only FGA or BSA-A.

4.5 Rate and Charge Regulations4.5.1 Rate Elements

(A) For the purposes of determining the rates and charges for Switched Access, including SAC Access Service, the following rate elements may apply:

Entrance Facility	Shared Trunk Port
Direct-Trunked Transport	Dedicated Trunk Port
Tandem-Switched Transport	Shared Multiplexing
Interconnection Charge	
Multiplexing	
Cross Connect Charge	
End Office Switching	
Information Surcharge	
Toll Free Data Base Query	

(D)

FGB, FGD, BSA-B, BSA-D and SAC Access Service are also subject to the Network Blocking charge per call as in 4.5.2(C).

(B) For CCS7 Access service the following rate elements may apply:

Dedicated Switched Access Line
Dedicated Switched Access Transport
STP Port Termination
Cross Connect Charge

4.5.2 Rate Regulations

This section contains the specific regulations governing the rates and charges that apply for Switched Access including SAC Access service, CCS7 Access service, and Toll Free Data Base Query service.

(D)
(D)

(This page filed under Transmittal No. 1392.)

Vice President, Federal Regulatory
1300 I Street NW, Washington, DC 20005

FACILITIES FOR INTERSTATE ACCESS

(D)

—

(D)

Vice President, Federal Regulatory
1300 I Street NW, Washington, DC 20005

Issued: March 1, 2019

FACILITIES FOR INTERSTATE ACCESS

4. SWITCHED ACCESS (Cont'd)4.5 Rate and Charge Regulations (Cont'd)4.5.4 Switched Access Zone Density Rate Plan(A) Description of the Plan

- (1) The Zone Density Rate Plan is a methodology used for rating Switched Access Transport services. The Zone Density Plan assigns every Serving Wire Center (SWC) or Telephone Company access tandem to one of three zones. The Serving Wire Center, CLLI Codes and zones are listed in Section 19. Rate zone assignments are established based upon the traffic density of each wire center and are divided into three categories. Zone 1/Band A SWCs have the highest density of services, Zone 2/Band B SWCs have intermediate density of services and Zone 3/Band C SWCs have the lowest density of services. Zone Density Plan rates become effective in a study area concurrent with the first operational Expanded Interconnection Service (EIS), as described in Section 17, in that study area.

The Zone Density Rate Plan applies to the following Switched Access Services:

- Entrance Facility
- Direct-Trunked Transport Facility
- Direct-Trunked Transport Termination
- Tandem-Switched Transport Facility
- Tandem-Switched Transport Termination
- Tandem Switching
- DS1 to Voice Multiplexing Arrangement
- DS3 to DS1 Multiplexing Arrangement
- Shared Multiplexing

(D)

- (a) The Entrance Facility is rated according to the zone of the serving wire center of the CDL.

- (b) Distance Sensitive Transport charges:

- When the distance is measured between wire centers within the same rate zone, the distance sensitive transport will be rated according to the zone of the serving wire center of the CDL and the end office.
- When the distance is measured between wire centers in two different zones, the distance sensitive transport will be rated at the higher zone rate.

(D)

(D)

(This page filed under Transmittal No. 1392.)

Vice President, Federal Regulatory
1300 I Street NW, Washington, D.C. 20005

Issued: March 1, 2019

FACILITIES FOR INTERSTATE ACCESS

4. SWITCHED ACCESS (Cont'd)

4.6 Rates and Charges (Cont'd)

(D)

(D)

(D)

(D)

(This page filed under Transmittal No. 1392.)

Vice President, Federal Regulatory
1300 I Street NW, Washington, DC 20005

Issued: March 1, 2019

FACILITIES FOR INTERSTATE ACCESS

TABLE OF CONTENTS

5.	<u>SPECIAL ACCESS</u>	<u>Page</u>
5.5	<u>Description of Multiplexing Arrangements</u>	5-41
	(A) (Reserved for Future Use)	5-41
	(B) (Reserved for Future Use)	5-41
	(C) (Reserved for Future Use)	5-41
	(D) DS1 to Voice	5-41
	(E) (Reserved for Future Use)	5-42
	(F) (Reserved for Future Use)	5-42
	(G) DS3 to DS1	5-42
	(H) (Reserved for Future Use)	5-42
	(I) (Reserved for Future Use)	5-42
	(J) Digital Data Carrier Multiplexer	5-42
	(K) Digital Data Subrate Multiplexer	5-42.1
		(D)
5.6	<u>Rate Regulations</u>	5-43
5.6.1	Types of Rates and Charges	5-43
	(A) Monthly Rates	5-43
	(B) (Reserved for Future Use)	5-43
	(C) (Reserved for Future Use)	5-43
	(D) (Reserved for Future Use)	5-43
	(E) Zone Density Plan - Special Access	5-44
	(F) Nonrecurring Charges	5-45
	(1) Design Change Charge	5-45
	(2) Installation of Supplemental Features and Multiplexing Arrangements	5-45
	(3) Installation of DS3 and DS1 Special Access Lines	5-46
	(4) (Reserved for Future Use)	5-47
	(5) Installation of Voicegrade and Digital Data Service Special Access Lines	5-48
	(6) Service Rearrangements	5-48
5.6.2	Minimum Periods	5-54
5.6.3	Mileage Measurement	5-54
5.6.4	Moves	5-54
5.6.5	(A) Same CDL	5-54
	(B) Different CDL	5-55
5.6.5	Rates and Charges on an Individual Case Basis	5-55
5.6.6	Hub Wire Centers	5-57
5.6.7	Shared Use Analog and Digital High Capacity Services	5-58

(This page filed under Transmittal No. 1392.)

Vice President, Federal Regulatory
1300 I Street NW, Washington, DC 20005

Issued: March 1, 2019

FACILITIES FOR INTERSTATE ACCESS

5 SPECIAL ACCESS (Cont'd)5.1 General (Cont'd)

Special Access provides a transmission path to connect CDLs* within a LATA for Interstate Telecommunications. (D)
 Special Access provided to a customer may be connected directly to customer facilities or through Telephone (T)
 Company Hub Wire Centers where bridging or multiplexing functions are performed, and/or may be connected to (D)
 access facilities of another telephone company or companies in the joint provision of Special Access Service as
 well as may be connected to Switched Access as set forth in Section 4. Special Access Services may also be
 connected to a customer's transmission equipment and facilities using a DS1 or DS3 Cross Connect arrangement
 where the customer is provided Expanded Interconnection Service (EIS) as defined in Section 17. High Capacity
 SALs may also be connected to an in-service Telephone Company provided integrated optical service, provided
 that such connections are technically and operationally feasible, as determined by the Telephone Company.

The provision of Switched Access and Special Access in combination is normally for, but not limited to, the use of
 WATS or WATS-type Access. When Special Access is connected to Switched Access, the terms, conditions and
 rates for the facilities between the end user's CDL and the WATS Serving Office are as set forth in this section of
 the tariff; the terms, conditions and rates for the facilities between the WATS Serving Office and the IC's CDL, as
 well as the switching functionalities (e.g., end user access codes, screening) are as set forth in Section 4 of this
 tariff.

Special Access can be provided in either analog or digital format. Analog formats are differentiated by spectrum
 and bandwidth. Digital formats are differentiated by bit rate. The specific types of Special Access (e.g., Voiceband,
 Digital Data Service) provided are described in 5.2 following.

5.1.1 Rate Elements

There are six basic rate elements which apply to Special Access Service:

Special Transport (described in 5.1.1(B) following)
 Special Transport Termination (described in 5.1.1(G) following)
 Special Access Line (described in 5.1.1(C) following)
 Special Access Cross Connect (described in 5.1.1(D) following)
 Supplemental Features (described in 5.4 following)
 Multiplexing Arrangements (described in 5.5 following)

Additionally, rates and charges for Integrated Optical Service Riders may also apply to Special
 Access connected to Integrated Optical Service Riders as set forth in Section 24.1 following.

* Telephone Company Centrex CO-like switches are considered to be CDLs for the purposes of this tariff.

(D)
(D)

(This page filed under Transmittal No. 1392.)

Vice President, Federal Regulatory
 1300 I Street NW, Washington, DC 20005

Issued: March 1, 2019

FACILITIES FOR INTERSTATE ACCESS

5 SPECIAL ACCESS (Cont'd)5.1 General (Cont'd)5.1.1 Rate Elements (Cont'd)(F) Multiplexing Arrangements

Multiplexing provides for arrangements to convert a single higher capacity or bandwidth circuit for bulk transport to several lower capacity or bandwidth circuits. Multiplexing is available at a Telephone Company designated Hub Wire Center arranged for multiplexing. All types of multiplexing may not be available at each Hub Wire Center. Refer to Section 5.6.6 for a description of Hub Wire Center. Descriptions for each type of multiplexing arrangements are provided in 5.5 following, and rates are set forth in 5.7 following. (D)

(G) Special Transport Termination(1) DS1 and DS3 Service

The Special Transport Termination rate element as set forth in 5.7, applies only to DS1, Individual DS3 and System DS3 offerings and is in addition to the Special Transport rate element. Special Transport Termination provides the equipment and arrangements necessary to terminate the Special Transport facility at a serving wire center. One Special Transport Termination charge applies for the termination of each end of a Special Transport facility for DS1 and DS3 (Individual and Systems) offerings.

(This page filed under Transmittal No. 1392.)

Vice President, Federal Regulatory
1300 I Street NW, Washington, DC 20005

Issued: March 1, 2019

FACILITIES FOR INTERSTATE ACCESS

5 SPECIAL ACCESS (Cont'd)5.1 General (Cont'd)5.1.2 Special Access Configurations

There are two types of facility configurations over which Special Access Services are provided – two-point and multipoint.

(A) Two-point Service

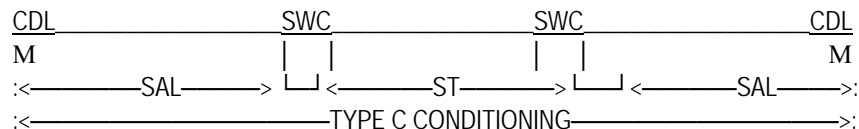
A two-point configuration is a circuit which is provided to connect two CDLs, either directly connected or through a Hub Wire Center where multiplexing functions are performed. A two-point configuration also connects a CDL and a WATS Serving Office. (D)

All Special Access offerings may be provided as a two-point configuration.

Applicable rate elements are:

- Special Access Lines
- Special Transport (when applicable)
- Special Transport Termination (when applicable)
- Supplemental Features (when applicable)
- Multiplexing Arrangements (when applicable)

The following diagram depicts a typical two-point service connecting two CDLs. The service is provided with the supplemental feature of Type C Conditioning:



SAL - Special Access Line
ST - Special Transport
SWC - Serving Wire Center
CDL - Customer Designated Location

Applicable rate elements are:

- Special Access Line (2 applicable)
- Special Transport (per airline mile between SWCs)
- Supplemental Feature of Type C Conditioning (2 applicable)

In addition, a Special Access Surcharge, as set forth in 5.6.9 following, may be applicable.

(This page filed under Transmittal No. 1392.)

Vice President, Federal Regulatory
1300 I Street NW, Washington, DC 20005

Issued: March 1, 2019

FACILITIES FOR INTERSTATE ACCESS

5 SPECIAL ACCESS (Cont'd)

5.5 Description of Multiplexing Arrangements (Cont'd)

(K) Digital Data Subrate Multiplexer (USOC - QSU24; QSU48; QSU96)

Used with cascading multiplexing, the Digital Data Subrate Multiplexer is an arrangement that multiplexes the following quantities of subrate digital data circuits into a single DSO digital port: 1) twenty 2.4 Kbps, 2) ten 4.8 Kbps or 3) five 9.6 Kbps. In turn, the DSO digital port is then multiplexed to a single DS1 digital circuit using the Digital Data Carrier Multiplexer described in 5.5(J) preceding.

(D)

(D)

(This page filed under Transmittal No. 1392.)

Vice President, Federal Regulatory
1300 I Street NW, Washington, DC 20005

Issued: March 1, 2019

FACILITIES FOR INTERSTATE ACCESS

5 SPECIAL ACCESS (Cont'd)5.6 Rate Regulations (Cont'd)5.6.1 Types of Rates and Charges (Cont'd)(F) Nonrecurring Charges

Nonrecurring charges are one-time charges that apply for specific work activity, (i.e., installation of service or change to an existing service). The types of nonrecurring charges that apply for Special Access Service are those listed below.

(1) Design Change Charge (USOC - H28)

The customer may request a design change to the service ordered. A design change is any change to a pending ASR for Special Access Service which requires engineering review. Design changes include such things as the addition or deletion of supplemental features or changes in the terminating options. Design changes do not include a change of IC CDL or end user premises when its serving wire center changes or Special Access service type (e.g., 2-wire to 4-wire Voiceband or Voiceband to DDS, etc.). Changes of this nature will require the issuance of a new ASR and the cancellation of the original ASR. The cancellation charges apply as set forth in 3.2.6 preceding.

The Telephone Company will review the requested change to determine whether the change can be accommodated and specify if a new service date is required.

(C)
(D)

The Design Change Charge, as set forth in 5.7.1 following, will apply on a per ASR per occurrence basis, for each ASR requiring a design change.

If a change of service date is required, the Service Date Change Charge as set forth in Section 3 preceding will also apply.

(2) Installation of Supplemental Features and Multiplexing Arrangements

Nonrecurring charges apply for the installation of some supplemental features and multiplexing arrangements available with Special Access service. The charge applies whether the feature or multiplexing arrangement is installed coincident with the initial installation of service or at any time subsequent to the installation of service.

For additions of supplemental features without an NRC, a charge equal to a SAL NRC will apply. Only one such charge per service, per order will apply.

(This page filed under Transmittal No. 1392.)

Vice President, Federal Regulatory
1300 I Street, NW, Washington, DC 20005

Issued: March 1, 2019

FACILITIES FOR INTERSTATE ACCESS

5 SPECIAL ACCESS (Cont'd)

5.6 Rate Regulations (Cont'd)

5.6.1 Types of Rates and Charges (Cont'd)

(F) Nonrecurring Charges (Cont'd)

(6) Service Rearrangements (Cont'd)

(D)

(D)

Changes in the physical location of the point of termination are treated as moves which are described and charged for as in 5.6.4.

Administrative changes will be made without charge(s) to the customer.

Administrative changes are as follows:

- Change in name or ownership or transfer of responsibility from one customer to another, provided there is no interruption of use or relocation of Special Access service.
- Change of customer or customer's end user premises address when the change of address is not a result of a physical relocation of equipment,
- Change in billing data (name, address, or contact name or telephone number),
- Change of customer circuit identification,
- Change of billing account number,
- Change of customer test line number,
- Change of customer or customer's end user contact name or telephone number,
- Change of agency authorization, and
- Change in jurisdiction involving no physical changes to the service.

(This page filed under Transmittal No. 1392.)

Vice President, Federal Regulatory
1300 I Street NW, Washington, DC 20005

Issued: March 1, 2019

FACILITIES FOR INTERSTATE ACCESS

5 SPECIAL ACCESS (Cont'd)5.6 Rate Regulations (Cont'd)5.6.1 Types of Rates and Charges (Cont'd)(F) Nonrecurring Charges (Cont'd)(6) Service Rearrangements (Cont'd)

All other service rearrangements will be charged for as follows:

- If the change involves the addition of another termination to an existing two-point or multipoint service, installation charges for each location added will apply.
- If the change involves the addition of supplemental feature or multiplexing arrangement, the installation charge associated with the supplemental feature or multiplexing arrangement will apply. When the supplemental feature or arrangement has no associated nonrecurring charge (or rated at \$.00), one SAL nonrecurring charge for the type of service involved (i.e., voicegrade SAL, DDS SAL, etc.) will be applied to the order.
- If the change involves only changing the type of network interface, with no change in facility, the installation charge associated with each service receiving a network interface change will apply.
- If the change involves changing a two-wire service to a four-wire service or vice versa, the installation charge for each location changed will apply.
- If the change involves rearranging an existing subtending service from one port to another in the same multiplexer; or
- If the change involves rearranging an existing subtending service from one multiplexer to another like multiplexer in the same wire center; or
- If the change involves rearranging an existing service into a high capacity service multiplexer in the same wire center; or
- If the change involves rearranging an existing service to a Special Access Cross Connect for Expanded Interconnection Service in the same wire center; or
- If the change involves rearranging a Special Access Cross Connect for Expanded Interconnection Service to a full point-to-point Special Access Service in the same wire center; or
- If the change involves rearranging an existing service from a facility of one service provider to a like facility of another service provider in the same wire center, even when a change in the customer of record is necessary, then a Rearrangement Charge will apply on a per termination basis.

(C)

(C)

(This page filed under Transmittal No. 1392.)

Vice President, Federal Regulatory (T)
1300 I Street, NW, Washington, DC 20005 (T)

Effective: March 16, 2019

Vice President, Federal Regulatory
1300 I Street, NW, Washington, DC 20005

Issued: March 1, 2019

FACILITIES FOR INTERSTATE ACCESS

5 SPECIAL ACCESS (Cont'd)

5.6 Rate Regulations (Cont'd)

(D)

(D)

(This page filed under Transmittal No. 1392.)

Vice President, Federal Regulatory (T)
1300 I Street, NW, Washington, DC 20005 (T)

Issued: March 1, 2019

FACILITIES FOR INTERSTATE ACCESS

5 SPECIAL ACCESS (Cont'd)

5.6 Rate Regulations (Cont'd)

(D)

(D)

(This page filed under Transmittal No. 1392.)

Vice President, Federal Regulatory (T)
1300 I Street, NW, Washington, DC 20005 (T)

Issued: March 1, 2019

FACILITIES FOR INTERSTATE ACCESS

5 SPECIAL ACCESS (Cont'd)

5.6 Rate Regulations (Cont'd)

(D)

(D)

(This page filed under Transmittal No. 1392.)

Vice President, Federal Regulatory (T)
1300 I Street, NW, Washington, DC 20005 (T)

Issued: March 1, 2019

FACILITIES FOR INTERSTATE ACCESS

5 SPECIAL ACCESS (Cont'd)

5.6 Rate Regulations (Cont'd)

(D)

(D)

(This page filed under Transmittal No. 1392.)

Vice President, Federal Regulatory (T)
1300 I Street, NW, Washington, DC 20005 (T)

FACILITIES FOR INTERSTATE ACCESS

5.6.2 Minimum Periods

5.6.3 Mileage Measurement

When there is a Hub Wire Center involved, the Special Transport mileage will be measured from the Hub Wire Center to the serving wire centers of each of the CDLs connected to the hubbed facilities. Mileage is computed for each section and rates are applied accordingly. However, when a Special Access facility is routed through a Hub Wire Center for purposes other than customer specified such as bridging or multiplexing (e.g. the Telephone Company chooses to so route for test access purposes), rates will be applied only to the distance calculated between the wire centers serving the CDLs.

The rates for the mileage are applied per airline mile. The serving wire center V&H coordinates and the method of calculation are specified in the NECA Tariff FCC No. 4.

5.6.4 Moves

A move involves a change in the physical location of the point of termination of Special Access. A move normally involves an interruption of Special Access for the period required to complete the move. No credit allowance will be granted for that period. Special Construction as set forth in Section 3.1.3 preceding may also be applicable at the different CDL.

The charge for the move depends on whether the move is within the same CDL or to a different CDL.

(A) Same CDL

When the move of a termination of FIA, as defined in Section 2.1.5, for special access is to a new point within the same CDL (same address and/or same building), the charge for the move will be the installation charge for the portion of the service being reterminated. There will be no change in the minimum period requirements. For services subject to payment plan regulations, the same payment period will remain in force.

(This page filed under Transmittal No. 1392.)

Vice President, Federal Regulatory
1300 I Street NW, Washington, D.C. 20005

$$\begin{array}{c} \text{(D)} \\ | \\ \text{(D)} \end{array}$$

Issued: March 1, 2019

FACILITIES FOR INTERSTATE ACCESS

5 SPECIAL ACCESS (Cont'd)5.6 Rate Regulations (Cont'd)5.6.7 Shared Use Analog and Digital High Capacity Services (D)

Monthly charges for a DS1 or DS3 high capacity shared used facility will be apportioned between Switched and Special Access based on the relative proportion of channels used for switched and special access in the following manner. (D)

If the facility is ordered as Special Access, rating as Special Access will continue until such time as a portion of the available capacity is used to provide Switched Access service. As individual channels are activated for Switched Access, monthly charges will be apportioned between Switched and Special Access based on the number of channels used for Switched Access and the number of remaining channels on the Special Access facility according to the following formula:

- The total shared use charge is equal to the Monthly Switched Access Charge times the number of channels used for Switched Access divided by 24 for DS1 or 672 for DS3 plus the monthly Special Access Charge times the number of channels remaining for Special Access divided by 24 for DS1 or 672 for DS3.

If the facility is ordered as Switched Access, rating as Switched Access will continue until such time as a portion of the available capacity is used to provide Special Access service. As individual channels are activated for Special Access, monthly charges will be apportioned between Switched and Special Access based on the number of channels used for Special Access and the number of remaining channels on the Switched Access Facility according to the following formula:

- The total shared use charge is equal to the Monthly Special Access Charge times the number of channels used for Special Access divided by 24 for DS1 or 672 for DS3 plus the monthly Switched Access Charge times the number of channels remaining for Switched Access divided by 24 for DS1 or 672 for DS3.

(D)
(D)

(This page filed under Transmittal No. 1392.)

Vice President, Federal Regulatory
1300 I Street NW, Washington, DC 20005

Issued: March 1, 2019

FACILITIES FOR INTERSTATE ACCESS

5. SPECIAL ACCESS (Cont'd)

(D)

(D)

(D)

(This page filed under Transmittal No. 1392.)

Vice President, Federal Regulatory
1300 I Street NW, Washington, DC 20005

Issued: March 1, 2019

FACILITIES FOR INTERSTATE ACCESS

5 SPECIAL ACCESS (Cont'd)5.6 Rate Regulations (Cont'd)5.6.9 Special Access Surcharge (Cont'd)

In order for the Telephone Company to determine the application of the surcharge with respect to specific services, the customer must report the intended use of all services when placing ASRs for Special Access Service. In addition, when ordering High Capacity Analog or Digital services, the customer must report the use for each voice equivalent circuit of the high capacity service. When any circuit is reported wholly used in any manner described in (1) through (6) preceding, the surcharge will not apply. If the intended use is not reported, the surcharge will apply.

If, at any time after the installation of a service which is subject to the surcharge, the customer reports that the service is being used consistently with any exception listed above, the Telephone Company will credit the customer for the surcharge. Credit will not be given beyond the receipt date of the certification for exemption.

(D)
|
(D)5.6.10 (Reserved for Future Use)5.6.11 DS3 High Capacity Service(A) DS3 Rate Structure

A DS3 (44.736Mbps) High Capacity SAL, whether an Individual, 3-System or Unlimited System, may be purchased with or without electronics. When a SAL is ordered with electronics Verizon will place electronics at both the CDL and the serving wire center. When a SAL is ordered without electronics Verizon will only place electronics at the serving wire center and not at the CDL. Effective May 18th 2002 when a DS3 SAL is ordered without electronics the interface must be optical unless an Additional SAL is added to an existing System with an electrical interface. When ordered with electronics the interface may be electrical or optical.

DS3 SALs are non-distance sensitive and are provided on a protected basis.

Individual System

An Individual System is a single DS3 between a CDL and the serving wire center. The appropriate NRC is applied per SAL..

Transport rate elements are applied per SAL when transport between offices is required. In instances when a SAL is ordered to a second CDL in conjunction with an Individual System SAL and Transport between offices is required Transport rate elements are applied per circuit.

(This page filed under Transmittal No. 1392.)

Vice President, Federal Regulatory
1300 I Street NW, Washington, D.C. 20005

Issued: March 1, 2019

FACILITIES FOR INTERSTATE ACCESS**5 SPECIAL ACCESS (Cont'd)****5.6 Rate Regulations (Cont'd)****5.6.11 DS3 High Capacity Service (Cont'd)****(H) DS3 Multiplexer Cross Connect Arrangement**

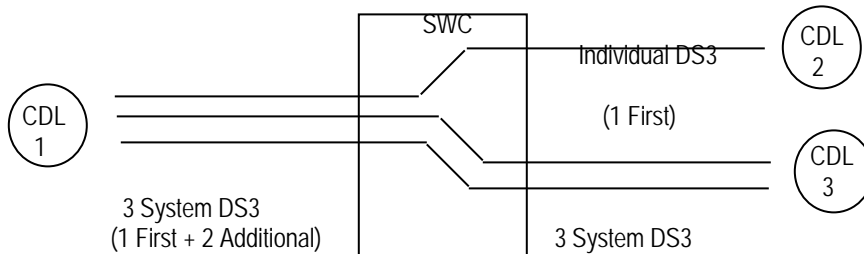
The DS3 Multiplexer Cross Connect Arrangement allows a customer to (1) cross connect digital DS-1 channels from a DS3 Multiplexer to another DS3 Multiplexer or (2) to cross connect digital DS1 channels from a DS3 Multiplexer to an OC-3 CO-Node purchased from Section (20). When the DS3 Multiplexer Cross Connect is applied between a DS3 Multiplexer and an OC-3 CO-Node, applicable Section (20) rate elements are applied in addition to the DS3 Multiplexer Cross Connect. If the DS3 multiplexer is located in a different hub wire center than the other DS3 multiplexer or OC-3 CO-Node, DS1 special transport will apply in addition to the DS3 Cross Connect charge. The customer must provide the (CFA and SCFA) for both multiplexed services or OC-3 CO-Node on the ASR.

The rate as specified in Section 5.7.15 will apply per cross connect arrangement.

(D)

(I) Partitioned Billing Arrangement (PBA)

PBA is a service arrangement that allows System DS3 (3 System or Unlimited System) customers to partition the multiple DS3s to a number of CDLs on the other end of the circuit (see diagram below). All rate elements associated with the PBA must be billed to the same customer.



For 3 System DS3s and Unlimited System DS3s ordered under a PBA, each CDL must have a first system SAL. Additional SALs may then be ordered under the normal System terms and conditions.

(This page filed under Transmittal No. 1392.)

Vice President, Federal Regulatory
1300 I Street NW, Washington, D.C. 20005

Issued: March 1, 2019

FACILITIES FOR INTERSTATE ACCESS

5. SPECIAL ACCESS (Cont'd)5.7 Rates and Charges (Cont'd)5.7.2 Voiceband Facilities (Cont'd)(A) Standard Arrangements (Cont'd)

(USOC)	<u>Special Transport</u>	Nonrecurring	<u>Special Access Line</u>		(D)
	<u>(Per Airline Mile)</u>		<u>Two-Wire</u>	<u>Four-Wire</u>	
	<u>Monthly Rate</u>		<u>Monthly Rate</u>	<u>Monthly Rate</u>	
	(1LFSX)	Charge	(1XC2X)	(1XC4X)	
			(X2W)	(X4W)	
<u>Jurisdiction</u>					
Pennsylvania					
Price Band A	\$4.70	\$200.00	\$31.30	\$49.50	
Price Band B	4.70	200.00	32.60	49.50	
Price Band C	4.70	200.00	33.30	49.50	
Price Cap		200.00	29.00	40.85	
Rearrangement					
- Per Termination		(NRBOT)			(N)
Price Bands, A, B, and C		\$200.00			(N)
Virginia					
Price Band A	4.70	200.00	30.60	41.75	
Price Band B	4.70	200.00	30.60	41.75	
Price Band C	4.70	200.00	30.60	41.75	
Price Cap		200.00	30.60	41.75	
Rearrangement					
- Per Termination		(NRBOT)			(N)
Price Bands, A, B, and C		\$200.00			(N)

(D)
|
(D)

(This page filed under Transmittal No. 1392.)

Vice President - Federal Regulatory
1300 I Street NW, Washington, DC 20005

Issued: March 1, 2019

FACILITIES FOR INTERSTATE ACCESS

- 5 SPECIAL ACCESS (Cont'd)
- 5.7 Rates and Charges (Cont'd)

(D)

(D)

(This page filed under Transmittal No. 1392.)

Vice President, Federal Regulatory
1300 I Street NW, Washington, DC 20005

Issued: March 1, 2019

FACILITIES FOR INTERSTATE ACCESS

5. SPECIAL ACCESS (Cont'd)

(D)

(D)

(This page filed under Transmittal No. 1392.)

Vice President, Federal Regulatory
1300 I Street NW, Washington, DC 20005

Issued: March 1, 2019

FACILITIES FOR INTERSTATE ACCESS

5. SPECIAL ACCESS (Cont'd)5.7 Rates and Charges (Cont'd)5.7.5 Digital Data Service Facilities (Cont'd)
(2.4, 4.8, 9.6, 19.2, 56, 64 Kbps)(A) Standard Arrangements (Cont'd)

(USOC)	<u>Special Transport</u>	<u>Special Access Line</u>		
	All Speeds (Per Airline Mile) <u>Monthly Rate</u> (1LFSX)	All Speeds Nonrecurring <u>Charge</u> (NRBDD)	2.4, 4.8, 9.6, 19.2 Kbps <u>Monthly Rate</u> (LCH) (TNTM2)**	56, 64 Kbps <u>Monthly Rate</u> (LCH) (TNTM2)**
<u>Jurisdiction</u>				
Pennsylvania				
Price Band A	\$4.50	\$250.00	\$111.90	\$111.90
Price Band B	4.50	250.00	111.90	111.90
Price Band C	4.50	250.00	111.90	111.90
Rearrangement				(N)
- Per Termination		(NRBOT)		
Price Bands, A, B, and C		\$200.00		(N)
Virginia				
Price Band A	5.86	250.00	119.40	119.40
Price Band B	5.86	250.00	119.40	119.40
Price Band C	5.86	250.00	119.40	119.40
Rearrangement				(N)
- Per Termination		(NRBOT)		
Price Bands, A, B, and C		\$200.00		(N)

** Effective August 1, 2002, the 4-wire service associated with the LCH USOC is no longer available with new service requests in Virginia. However, the Company may still use the USOC in instances where the TNTM2 USOC cannot be used.

(This page filed under Transmittal No. 1392.)

Vice President, Federal Regulatory
1300 I Street NW, Washington, DC 20005

Issued: March 1, 2019

FACILITIES FOR INTERSTATE ACCESS

5. SPECIAL ACCESS (Cont'd)5.7 Rates and Charges (Cont'd)5.7.5 Digital Data Service Facilities (Cont'd)
(2.4, 4.8, 9.6, 19.2, 56, 64 Kbps)(B) DDS Optional Payment Plan#

(USOC)	All Speeds Nonrecurring Charge (SLH20)**	Special Access Line		
		2.4, 4.8, 9.6, 19.2 Kbps		
		Monthly Rates		
		(LCYF1) (SLH20)** (1CFQ1)*	(LCYF3) (SLH20)** (1CFQ3)*	(LCYF5) (1CFQ5)*
<u>Jurisdiction</u>		<u>1 Year MRC</u>	<u>3 Year MRC</u>	<u>5 Year MRC</u>
Pennsylvania				
Price Band A	\$0.00	\$74.00	\$64.00	\$63.50
Price Band B	0.00	74.00	64.00	63.50
Price Band C	0.00	74.00	64.00	63.50
Rearrangement				(N)
- Per Termination	(NRBOT)			
Price Bands, A, B, and C	\$200.00			(N)
Virginia				
Price Band A	0.00	72.67	63.35	58.31
Price Band B	0.00	72.67	63.35	58.31
Price Band C	0.00	72.67	63.35	58.31
Rearrangement				(N)
- Per Termination	(NRBOT)			
Price Bands, A, B, and C	\$200.00			(N)

Service availability limited. Refer to # footnote on Page 5-79.

* USOC applicable to PA and VA.

** Effective August 1, 2002, the 4-wire service associated with the LCYF1, LCYF3 and LCYF5 USOC is no longer available with new service requests in Virginia. However, the Company may still use the USOC in instances where the SLH20 USOC cannot be used.

(This page filed under Transmittal No. 1392.)

Vice President, Federal Regulatory
1300 I Street NW, Washington, DC 20005

Issued: March 1, 2019

FACILITIES FOR INTERSTATE ACCESS

5 SPECIAL ACCESS (Cont'd)

5.7 Rates and Charges (Cont'd)

(D)

(D)

(This page filed under Transmittal No. 1392.)

Vice President, Federal Regulatory
1300 I Street NW, Washington, D.C. 20005

Issued: March 1, 2019

FACILITIES FOR INTERSTATE ACCESS

5. SPECIAL ACCESS (Cont'd)5.7 Rates and Charges (Cont'd)5.7.7 High Capacity DS1 (1.544 Mbps) Facilities (Cont'd)(A) Standard Arrangements (Cont'd)

	Nonrecurring <u>Charge</u>	<u>Special Access Line</u> Monthly <u>Rate</u> (1XCDX)	
(USOC)			
<u>Jurisdiction</u>			
Pennsylvania			
Price Band A	\$450.00	\$284.93	
Price Band B	450.00	291.50	
Price Band C	450.00	298.18	
Rearrangement			(N)
- Per Termination	(NRBOT)		
Price Bands, A, B, and C	\$200.00		
Coordinated Re termination			
- Per Circuit	(NRFRE)		
Price Bands, A, B and C	\$380.00		(N)
Virginia			
Price Band A	450.00	255.42	
Price Band B	450.00	255.42	
Price Band C	450.00	255.42	
Rearrangement			(N)
- Per Termination	(NRBOT)		
Price Bands, A, B, and C	\$200.00		
Coordinated Re termination			
- Per Circuit	(NRFRE)		
Price Bands, A, B and C	\$380.00		(N)

(This page filed under Transmittal No. 1392.)

Vice President, Federal Regulatory
1300 I Street NW, Washington, DC 20005

Issued: March 1, 2019

FACILITIES FOR INTERSTATE ACCESS

5. SPECIAL ACCESS (Cont'd)5.7 Rates and Charges (Cont'd)5.7.10 High Capacity Digital DS3 (44.736 Mbps) Facilities - Three System (Cont'd)(A) Protected DS3 - With Telephone Company Electronics (Cont'd)

(USOC)	<u>First Special Access Line</u>			
	<u>Nonrecurring Charge</u>	<u>One Year Monthly Rate</u>	<u>Three Year Monthly Rate</u>	<u>Five Year Monthly Rate</u>
		(1CFE1)#	(1CFE3)	(1CFE5)
<u>Jurisdiction</u>				
Pennsylvania				
Price Band A	\$2,500.00	\$1,686.46	\$1,380.12	\$1,203.84
Price Band B	2,500.00	1,725.68	1,412.98	1,233.20
Price Band C	2,500.00	1,764.90	1,445.84	1,262.57
Rearrangement (NRBOT)				(N)
- Per Termination				
Price Bands, A, B and C	\$200.00			
Coordinated Re termination (NRFRE)				(N)
- Per Circuit				
Price Bands, A, B and C	\$380.00			
Virginia				
Price Band A	2,500.00	2,370.00	2,140.00	1,660.00
Price Band B	2,500.00	2,370.00	2,140.00	1,660.00
Price Band C	2,500.00	2,370.00	2,140.00	1,660.00
Rearrangement (NRBOT)				(N)
- Per Termination				
Price Bands, A, B and C	\$200.00			
Coordinated Re termination (NRFRE)				(N)
- Per Circuit				
Price Bands, A, B and C	\$380.00			

USOC applies to all jurisdictions in which the First Special Access Line Protected DS3 - With Telephone Company Electronics is provided under the NDP as set forth in Section 23.1 following.

(This page filed under Transmittal No. 1392.)

Vice President - Federal Regulatory
1300 I Street NW, Washington, DC 20005

Issued: March 1, 2019

FACILITIES FOR INTERSTATE ACCESS

5. SPECIAL ACCESS (Cont'd)5.7 Rates and Charges (Cont'd)5.7.10 High Capacity Digital DS3 (44.736 Mbps) Facilities - Three System(A) Protected DS3 - With Telephone Company Electronics (Cont'd)Each Additional Special Access Line - Maximum of 2

(USOC)	<u>Nonrecurring Charge</u>	<u>One Year Monthly Rate</u>	<u>Three Year Monthly Rate</u>	<u>Five Year Monthly Rate</u>
<u>Jurisdiction</u>		(1CFG1)#	(1CFG3)	(1CFG5)
Pennsylvania				
Price Band A	\$1,000.00	\$1,264.90	\$1,035.09	\$902.91
Price Band B	1,000.00	1,294.26	1,059.79	924.96
Price Band C	1,000.00	1,323.73	1,084.38	947.00
Rearrangement (NRBOT)				
- Per Termination				
Price Bands, A, B and C	\$200.00			
Coordinated Retermination (NRFRE)				
- Per Circuit				
Price Bands, A, B and C	\$380.00			
Virginia				
Price Band A	1,000.00	1,777.50	1,605.00	1,245.00
Price Band B	1,000.00	1,777.50	1,605.00	1,245.00
Price Band C	1,000.00	1,777.50	1,605.00	1,245.00
Rearrangement (NRBOT)				
- Per Termination				
Price Bands, A, B and C	\$200.00			
Coordinated Retermination (NRFRE)				
- Per Circuit				
Price Bands, A, B and C	\$380.00			

(N)

(N)

(N)

(N)

USOC applies to all jurisdictions in which each additional Special Access Line Protected DS3 - With Telephone Company Electronics is provided under the NDP as set forth in Section 23.1 following.

(This page filed under Transmittal No. 1392.)

Vice President - Federal Regulatory
1300 I Street NW, Washington, DC 20005

Issued: March 1, 2019

FACILITIES FOR INTERSTATE ACCESS

5. SPECIAL ACCESS (Cont'd)5.7 Rates and Charges (Cont'd)5.7.11 High Capacity Digital DS3 (44.736 Mbps) Facilities - Unlimited System(A) Protected DS3 - With Telephone Company Electronics

(USOC)	<u>Nonrecurring Charge</u>	<u>First Special Access Line</u>			
		<u>One Year Monthly Rate</u>	<u>Three Year Monthly Rate</u>	<u>Five Year Monthly Rate</u>	<u>Seven Year Monthly Rate</u>
		(1CFF1)	(1CFF3)	(1CFF5)	(1CFF7)
<u>Jurisdiction</u>					
Pennsylvania					
Price Band A	\$4,500.00	\$4,833.81	\$4,013.27	\$3,533.62	\$3,072.68
Price Band B	4,500.00	4,946.17	4,108.77	3,619.79	3,149.58
Price Band C	4,500.00	5,058.64	4,204.38	3,705.97	3,226.32
Rearrangement	(NRBOT)				
- Per Termination					(N)
Price Bands, A, B and C	\$200.00				
Coordinated Re termination	(NRFRE)				
- Per Circuit					(N)
Price Bands, A, B and C	\$380.00				
Virginia					
Price Band A	4,500.00	6,471.75	5,510.00	4,985.25	4,547.75
Price Band B	4,500.00	6,471.75	5,510.00	4,985.25	4,547.75
Price Band C	4,500.00	6,471.75	5,510.00	4,985.25	4,547.75
Rearrangement	(NRBOT)				(N)
- Per Termination					
Price Bands, A, B and C	\$200.00				
Coordinated Re termination	(NRFRE)				
- Per Circuit					(N)
Price Bands, A, B and C	\$380.00				

(This page filed under Transmittal No. 1392.)

Vice President, Federal Regulatory
1300 I Street NW, Washington, DC 20005

Issued: March 1, 2019

FACILITIES FOR INTERSTATE ACCESS

5. SPECIAL ACCESS (Cont'd)5.7 Rates and Charges (Cont'd)5.7.11 High Capacity Digital DS3 (44.736 Mbps) Facilities - Unlimited System (Cont'd)(A) Protected DS3 - With Telephone Company Electronics (Cont'd)Each Additional Special Access Line

(USOC)	Nonrecurring <u>Charge</u>	One Year Monthly <u>Rate</u>	Three Year Monthly <u>Rate</u>	Five Year Monthly <u>Rate</u>
		(1CFH1)	(1CFH3)	(1CFH5)
<u>Jurisdiction</u>				
Pennsylvania				
Price Band A	\$1,000.00	\$512.83	\$441.07	\$396.65
Price Band B	1,000.00	524.70	451.56	406.30
Price Band C	1,000.00	536.68	462.05	415.94
Rearrangement	(NRBOT)			
- Per Termination				(N)
Price Bands, A, B and C	\$200.00			
Coordinated Re termination	(NRFRE)			
- Per Circuit				(N)
Price Bands, A, B and C	\$380.00			
Virginia				
Price Band A	1,000.00	800.00	727.75	569.25
Price Band B	1,000.00	800.00	727.75	569.25
Price Band C	1,000.00	800.00	727.75	569.25
Rearrangement	(NRBOT)			(N)
- Per Termination				
Price Bands, A, B and C	\$200.00			
Coordinated Re termination	(NRFRE)			
- Per Circuit				(N)
Price Bands, A, B and C	\$380.00			

(This page filed under Transmittal No. 1392.)

Vice President, Federal Regulatory
1300 I Street NW, Washington, DC 20005

Issued: March 1, 2019

FACILITIES FOR INTERSTATE ACCESS

5. SPECIAL ACCESS (Cont'd)5.7 Rates and Charges (Cont'd)5.7.11 High Capacity Digital DS3 (44.736 Mbps) Facilities - Unlimited System (Cont'd)(B) Protected DS3 - Without Telephone Company Electronics (Cont'd)

(USOC)	<u>Nonrecurring Charge</u>	<u>First Special Access Line</u>		
		<u>One Year Monthly Rate</u>	<u>Three Year Monthly Rate</u>	<u>Five Year Monthly Rate</u>
<u>Jurisdiction</u>		(1CFL1)	(1CFL3)	(1CFL5)
Pennsylvania				
Price Band A	\$3,375.00	\$3,290.35	\$2,731.62	\$2,405.25
Price Band B	3,375.00	3,366.88	2,796.70	2,463.97
Price Band C	3,375.00	3,443.41	2,861.68	2,522.59
Rearrangement	(NRBOT)			
- Per Termination				(N)
Price Bands, A, B and C	\$200.00			
Coordinated Retermination	(NRFRE)			
- Per Circuit				(N)
Price Bands, A, B and C	\$380.00			
Virginia				
Price Band A	3,375.00	4,405.25	3,750.25	3,393.25
Price Band B	3,375.00	4,405.25	3,750.25	3,393.25
Price Band C	3,375.00	4,405.25	3,750.25	3,393.25
Rearrangement	(NRBOT)			
- Per Termination				(N)
Price Bands, A, B and C	\$200.00			
Coordinated Retermination	(NRFRE)			
- Per Circuit				(N)
Price Bands, A, B and C	\$380.00			

(This page filed under Transmittal No. 1392.)

Vice President, Federal Regulatory
1300 I Street NW, Washington, DC 20005

Issued: March 1, 2019

FACILITIES FOR INTERSTATE ACCESS

5. SPECIAL ACCESS (Cont'd)5.7 Rates and Charges (Cont'd)5.7.11 High Capacity Digital DS3 (44.736 Mbps) Facilities - Unlimited System (Cont'd)(B) Protected DS3 - Without Telephone Company Electronics (Cont'd)

(USOC)	<u>Each Additional Special Access Line</u>					
	<u>Nonrecurring Charge</u>	<u>One Year Monthly Rate</u>	<u>Three Year Monthly Rate</u>	<u>Five Year Monthly Rate</u>	<u>Seven Year Monthly Rate</u>	
		(1CFN1)	(1CFN3)	(1CFN5)	(1CFN7)	
<u>Jurisdiction</u>						
Pennsylvania						
Price Band A	\$750.00	\$497.99	\$434.92	\$361.57	\$333.37	
Price Band B	750.00	509.54	445.31	370.36	341.74	
Price Band C	750.00	521.20	455.69	379.27	350.12	
Rearrangement	(NRBOT)					(N)
- Per Termination						
Price Bands, A, B and C	\$200.00					
Coordinated Re termination	(NRFRE)					
- Per Circuit						
Price Bands, A, B and C	\$380.00					(N)
Virginia						
Price Band A	750.00	772.00	705.75	544.50	407.50	
Price Band B	750.00	772.00	705.75	544.50	407.50	
Price Band C	750.00	772.00	705.75	544.50	407.50	
Rearrangement	(NRBOT)					(N)
- Per Termination						
Price Bands, A, B and C	\$200.00					
Coordinated Re termination	(NRFRE)					
- Per Circuit						
Price Bands, A, B and C	\$380.00					(N)

(This page filed under Transmittal No. 1392.)

Vice President, Federal Regulatory
1300 I Street NW, Washington, D.C. 20005

Issued: March 1, 2019

FACILITIES FOR INTERSTATE ACCESS

5. SPECIAL ACCESS (Cont'd)5.7 Rates and Charges (Cont'd)5.7.12 High Capacity Digital DS3 (44.736 Mbps) Facilities - Individual System (Cont'd)(A) Protected DS3 Individual - With Telephone Company Electronics (Cont'd)

(USOC)	<u>Each Special Access Line</u>				
	<u>Nonrecurring Charge</u>	<u>One Year Monthly Rate</u>	<u>Three Year Monthly Rate</u>	<u>Five Year Monthly Rate</u>	<u>Seven Year Monthly Rate</u>
		(1CFD1)#	(1CFD3)	(1CFD5)	(1CFD7)
<u>Jurisdiction</u>					
Pennsylvania					
Price Band A	\$1,000.00	\$1,367.40	\$1,113.00	\$967.04	\$853.30
Price Band B	1,000.00	1,399.20	1,139.50	990.57	874.71
Price Band C	1,000.00	1,431.00	1,166.00	1,014.21	896.02
Rearrangement	(NRBOT)				
- Per Termination					
Price Bands, A, B and C	\$200.00				
Coordinated Re termination	(NRFRE)				
- Per Circuit					
Price Bands, A, B and C	\$380.00				
Virginia					
Price Band A	1,000.00	1,750.00	1,343.50	1,166.00	1,004.00
Price Band B	1,000.00	1,750.00	1,343.50	1,166.00	1,004.00
Price Band C	1,000.00	1,750.00	1,343.50	1,166.00	1,004.00
Rearrangement	(NRBOT)				
- Per Termination					
Price Bands, A, B and C	\$200.00				
Coordinated Re termination	(NRFRE)				
- Per Circuit					
Price Bands, A, B and C	\$380.00				

USOC applies to all jurisdictions in which each Special Access Line Protected DS3 - With Telephone Company Electronics is provided under the NDP as set forth in Section 23.1 following.

(This page filed under Transmittal No. 1392.)

Vice President, Federal Regulatory
1300 I Street NW, Washington, DC 20005

Issued: March 1, 2019

FACILITIES FOR INTERSTATE ACCESS

5. SPECIAL ACCESS (Cont'd)5.7 Rates and Charges (Cont'd)5.7.12 High Capacity Digital DS3 (44.736 Mbps) Facilities - Individual System (Cont'd)(B) Protected DS3 Individual - Without Telephone Company Electronics (Cont'd)

(USOC)	<u>Each Special Access Line</u>				
	<u>Nonrecurring Charge</u>	<u>One Year Monthly Rate</u>	<u>Three Year Monthly Rate</u>	<u>Five Year Monthly Rate</u>	<u>Seven Year Monthly Rate</u>
		(1CFJ1)#	(1CFJ3)	(1CFJ5)	(1CFJ7)
<u>Jurisdiction</u>					
Pennsylvania					
Price Band A	\$750.00	\$1,008.48	\$806.98	\$706.28	\$570.28
Price Band B	750.00	1,031.91	826.16	723.45	584.59
Price Band C	750.00	1,055.44	845.35	740.73	598.79
Rearrangement	(NRBOT)				
- Per Termination					(N)
Price Bands, A, B and C	\$200.00				
Coordinated Retermination	(NRFRE)				
- Per Circuit					(N)
Price Bands, A, B and C	\$380.00				
Virginia					
Price Band A	750.00	1,312.50	1,031.50	880.75	754.00
Price Band B	750.00	1,312.50	1,031.50	880.75	754.00
Price Band C	750.00	1,312.50	1,031.50	880.75	754.00
Rearrangement	(NRBOT)				
- Per Termination					(N)
Price Bands, A, B and C	\$200.00				
Coordinated Retermination	(NRFRE)				
- Per Circuit					(N)
Price Bands, A, B and C	\$380.00				

USOC applies to all jurisdictions in which each Special Access Line Protected DS3 - Without Telephone Company Electronics is provided under the NDP as set forth in Section 23.1 following.

(This page filed under Transmittal No. 1392.)

Vice President, Federal Regulatory
1300 I Street NW, Washington, DC 20005

Issued: March 1, 2019

FACILITIES FOR INTERSTATE ACCESS

5 SPECIAL ACCESS (Cont'd)5.7 Rates and Charges (Cont'd)5.7.18 DS1 Term Volume Plan (TVP) (Cont'd)(A) Special Access Line, Per DS1 SAL (Cont'd)(1) One Year Term (Cont'd)

Monthly Rate
DS1 SAL
Threshold Levels

(USOC)

(NRBVR)

	Nonrecurring Charge, <u>All Thresholds</u>	<u>2-60</u> (1CF41)	<u>61-120</u> (1CF51)	<u>121-240</u> (1CF61)
(USOC) <u>Jurisdiction</u>				
Pennsylvania				
Price Band A	\$450.00	\$227.90	\$216.56	\$205.11
Price Band B	450.00	233.20	221.54	209.88
Price Band C	450.00	238.50	226.63	214.65
Rearrangement				
- Per Termination	(NRBOT)			
Price Bands, A, B, and C	\$200.00			
Coordinated Retermination				
- Per Circuit	(NRFRE)			
Price Bands, A, B and C	\$380.00			
Virginia				
Price Band A	450.00	173.15	165.80	157.41
Price Band B	450.00	173.15	165.80	157.41
Price Band C	450.00	173.15	165.80	157.41
Rearrangement				
- Per Termination	(NRBOT)			
Price Bands, A, B, and C	\$200.00			
Coordinated Retermination				
- Per Circuit	(NRFRE)			
Price Bands, A, B and C	\$380.00			

(N)

(N)

(N)

(N)

(This page filed under Transmittal No. 1392.)

Vice President, Federal Regulatory
1300 I Street NW, Washington, DC 20005

Issued: March 1, 2019

FACILITIES FOR INTERSTATE ACCESS

5 SPECIAL ACCESS (Cont'd)5.7 Rates and Charges (Cont'd)5.7.18 DS1 Term Volume Plan (TVP) (Cont'd)(A) Special Access Line, Per DS1 SAL (Cont'd)(2) Two Year Term (Cont'd)Monthly Rate

DS1 SAL

Threshold Levels

(USOC)

(NRBVR)

(USOC) <u>Jurisdiction</u>	<u>Nonrecurring Charge.</u>			
	<u>All Thresholds</u>	<u>2-60</u> (1CF42)	<u>61-120</u> (1CF52)	<u>121-240</u> (1CF62)
Pennsylvania				
Price Band A	\$450.00	\$211.47	\$200.34	\$189.21
Price Band B	450.00	216.56	205.11	193.77
Price Band C	450.00	221.54	209.88	198.22
Rearrangement				
- Per Termination	(NRBOT)			
Price Bands, A, B, and C	\$200.00			
Coordinated Retermination				
- Per Circuit	(NRFRE)			
Price Bands, A, B and C	\$380.00			
Virginia				
Price Band A	450.00	165.80	157.41	149.01
Price Band B	450.00	165.80	157.41	149.01
Price Band C	450.00	165.80	157.41	149.01
Rearrangement				
- Per Termination	(NRBOT)			
Price Bands, A, B, and C	\$200.00			
Coordinated Retermination				
- Per Circuit	(NRFRE)			
Price Bands, A, B and C	\$380.00			

(This page filed under Transmittal No. 1392.)

Vice President, Federal Regulatory
1300 I Street NW, Washington, DC 20005

Issued: March 1, 2019

FACILITIES FOR INTERSTATE ACCESS

5. SPECIAL ACCESS (Cont'd)5.7 Rates and Charges (Cont'd)5.7.18 DS1 Term Volume Plan (TVP) (Cont'd)(A) Special Access Line, Per DS1 SAL (Cont'd)(3) Three Year Term (Cont'd)Monthly RateDS1 SALThreshold Levels

(USOC)

(NRBVR)

(USOC) <u>Jurisdiction</u>	<u>Nonrecurring Charge,</u> <u>All Thresholds</u>	<u>2-60</u> (1CF43)	<u>61-120</u> (1CF53)	<u>121-240</u> (1CF63)	
Pennsylvania					
Price Band A	\$450.00	\$196.52	\$184.76	\$173.84	
Price Band B	450.00	200.34	189.21	178.08	
Price Band C	450.00	202.25	191.01	179.78	
Rearrangement	(NRBOT)				(N)
- Per Termination					
Price Bands, A, B and C	\$200.00				
Coordinated Re termination	(NRFRE)				
- Per Circuit					
Price Bands, A, B and C	\$380.00				(N)
Virginia					
Price Band A	450.00	157.41	149.01	141.67	
Price Band B	450.00	157.41	149.01	141.67	
Price Band C	450.00	157.41	149.01	141.67	
Rearrangement	(NRBOT)				(N)
- Per Termination					
Price Bands, A, B and C	\$200.00				
Coordinated Re termination	(NRFRE)				
- Per Circuit					
Price Bands, A, B and C	\$380.00				(N)

(This page filed under Transmittal No. 1392.)

Vice President, Federal Regulatory
1300 I Street NW, Washington, DC 20005

Issued: March 1, 2019

FACILITIES FOR INTERSTATE ACCESS

5. SPECIAL ACCESS (Cont'd)5.7 Rates and Charges (Cont'd)5.7.18 DS1 Term Volume Plan (TVP) (Cont'd)(A) Special Access Line, Per DS1 SAL (Cont'd)(4) Five Year Term (Cont'd)Monthly RateDS1 SALThreshold Levels

(USOC)

(NRBVR)

Nonrecurring Charge.All Thresholds2-60

(1CF45)

61-120

(1CF55)

121-240

(1CF65)

(USOC)

Jurisdiction

Pennsylvania

Price Band A

\$450.00

\$172.14

\$161.44

\$150.63

Price Band B

450.00

173.84

163.03

152.11

Price Band C

450.00

176.38

165.36

154.34

Rearrangement

(NRBOT)

(N)

- Per Termination

Price Bands, A, B and C

\$200.00

Coordinated Re termination

(NRFRE)

- Per Circuit

Price Bands, A, B and C

\$380.00

(N)

Virginia

Price Band A

450.00

141.67

133.27

124.88

Price Band B

450.00

141.67

133.27

124.88

Price Band C

450.00

141.67

133.27

124.88

Rearrangement

(NRBOT)

(N)

- Per Termination

Price Bands, A, B and C

\$200.00

Coordinated Re termination

(NRFRE)

- Per Circuit

Price Bands, A, B and C

\$380.00

(N)

(This page filed under Transmittal No. 1392.)

Vice President, Federal Regulatory
1300 I Street NW, Washington, DC 20005

Issued: March 1, 2019

FACILITIES FOR INTERSTATE ACCESS

5. SPECIAL ACCESS (Cont'd)5.7 Rates and Charges (Cont'd)5.7.18 DS1 Term Volume Plan (TVP) (Cont'd)(A) Special Access Line, Per DS1 SAL (Cont'd)(5) Eight Year Term (Cont'd)Monthly Rate

DS1 SAL

Threshold Levels

(USOC)

(NRBVR)

Nonrecurring Charge,All Thresholds4000-6000

(1CFR8)

6001-10,000

(1CFS8)

10,001-20,000

(1CFT8)

20,001-30,000

(1CFU8)

Over 30,000

(1CFV8)

(USOC)

Jurisdiction

Pennsylvania

Price Band A	\$450.00	\$130.27	\$129.11	\$126.99	\$125.93	\$124.87
Price Band B	450.00	131.55	130.38	128.26	127.20	126.14
Price Band C	450.00	133.45	132.29	130.17	129.11	128.05

Rearrangement (NRBOT)

- Per Termination

Price Bands, A, B and C \$200.00

(N)

Coordinated Re termination (NRFRE)

- Per Circuit

Price Bands, A, B and C \$380.00

(N)

Virginia

Price Band A	430.00	105.59	104.58	102.57	101.57	100.56
Price Band B	430.00	105.59	104.58	102.57	101.57	100.56
Price Band C	430.00	105.59	104.58	102.57	101.57	100.56

Rearrangement (NRBOT)

- Per Termination

Price Bands, A, B and C \$200.00

(N)

Coordinated Re termination (NRFRE)

- Per Circuit

Price Bands, A, B and C \$380.00

(N)

(This page filed under Transmittal No. 1392.)

Vice President, Federal Regulatory
1300 I Street NW, Washington, DC 20005

Issued: March 1, 2019

FACILITIES FOR INTERSTATE ACCESS

5. SPECIAL ACCESS (Cont'd)5.7 Rates and Charges (Cont'd)5.7.18 DS1 Term Volume Plan (TVP) (Cont'd)(A) Special Access Line, Per DS1 SAL (Cont'd)(6) Ten Year Term (Cont'd)
Monthly Rate
DS1 SAL
Threshold Levels

(USOC)

(NRBVR)

(USOC) <u>Jurisdiction</u>	<u>Nonrecurring Charge,</u> <u>All Thresholds</u>	<u>4000-6000</u> <u>(1CFRJ)</u>	<u>6001-10,000</u> <u>(1CFSJ)</u>	<u>10,001-20,000</u> <u>(1CFTJ)</u>	<u>20,001-30,000</u> <u>(1CFUJ)</u>	<u>Over 30,000</u> <u>(1CFVJ)</u>
Pennsylvania						
Price Band A	\$450.00	\$129.21	\$126.99	\$124.87	\$123.81	\$122.75
Price Band B	450.00	130.49	128.26	126.14	125.08	124.02
Price Band C	450.00	132.39	130.17	128.05	126.99	125.93
Rearrangement (NRBOT)						
- Per Termination						(N)
Price Bands, A, B and C	\$200.00					
Coordinated Re termination (NRFRE)						
- Per Circuit						(N)
Price Bands, A, B and C	\$380.00					
Virginia						
Price Band A	430.00	104.58	102.57	99.55	96.57	93.62
Price Band B	430.00	104.58	102.57	99.55	96.57	93.62
Price Band C	430.00	104.58	102.57	99.55	96.57	93.62
Rearrangement (NRBOT)						
- Per Termination						(N)
Price Bands, A, B and C	\$200.00					
Coordinated Re termination (NRFRE)						
- Per Circuit						(N)
Price Bands, A, B and C	\$380.00					

(This page filed under Transmittal No. 1392.)

Vice President, Federal Regulatory
1300 I Street NW, Washington, DC 20005

Issued: March 1, 2019

FACILITIES FOR INTERSTATE ACCESS

20. Optical Networking (Cont'd)

(D)

(D)

(This page filed under Transmittal No. 1392.)

Vice President, Federal Regulatory
1300 I Street NW, Washington, D.C. 20005

Issued: March 1, 2019

FACILITIES FOR INTERSTATE ACCESS

20. Optical Networking (Cont'd)

(D)

(D)

(D)

(This page filed under Transmittal No. 1392.)

Vice President, Federal Regulatory
1300 I Street NW, Washington, D.C. 20005

Issued: March 1, 2019

FACILITIES FOR INTERSTATE ACCESS

20. Optical Networking (Cont'd)

(D)

(This page filed under Transmittal No. 1392.)

Vice President, Federal Regulatory
1300 I Street NW, Washington, D.C. 20005

(D)

Issued: March 1, 2019

FACILITIES FOR INTERSTATE ACCESS

20. Optical Networking (Cont'd)

(D)

(D)

(This page filed under Transmittal No. 1392.)

Vice President, Federal Regulatory
1300 I Street NW, Washington, D.C. 20005

Issued: March 1, 2019

FACILITIES FOR INTERSTATE ACCESS

20. Optical Networking (Cont'd)

(T)

(D)

(D)

(D)

(This page filed under Transmittal No. 1392.)

Vice President, Federal Regulatory
1300 I Street NW, Washington, D.C. 20005

Issued: March 1, 2019

FACILITIES FOR INTERSTATE ACCESS

20. Optical Networking (Cont'd)

(D)

(D)

(This page filed under Transmittal No. 1392.)

Vice President, Federal Regulatory
1300 I Street NW, Washington, D.C. 20005

Issued: March 1, 2019

FACILITIES FOR INTERSTATE ACCESS

23. Discount Plans (Cont'd)23.1 National Discount Plan (Cont'd)23.1.5 Application of Discount(A) Discounted Rate Elements

The discounts provided under the NDP shall only be provided for the ACNA(s) included in the NDP Customer's NDP on the following Discounted Rate Elements:

- (1) The following Discounted Rate Elements from FCC1 are included in NDP:
 - (a) Special Access DS1 Service Channel Terminations, Basic Service, Section 7.5.9(A) of FCC1, as determined in accordance with Section 14.7 of FCC1.
 - (b) Special Access DS1 Service Channel Mileage, Basic Service, Section 7.5.9(B) of FCC1, as determined in accordance with Section 14.7 of FCC1.
 - (c) Special Access DS1 Service DS1 to Voice Multiplexing, Basic Service, Section 7.5.9(C) of FCC1, as determined in accordance with Section 14.7 of FCC1.
 - (d) Special Access DS1 Service DS1 to Digital Multiplexing, Basic Service, Section 7.5.9(C) of FCC1, as determined in accordance with Section 14.7 of FCC1.
 - (e) Special Access DS1 Service DS1 to DS0 Multiplexing, Basic Service, Section 7.5.9(C) of FCC1, as determined in accordance with Section 14.7 of FCC1.
 - (f) Special Access DS3 Service primary and secondary Channel Terminations with optical and electrical interfaces, Base Rates, Section 7.5.9(A) of FCC1, as determined in accordance with Section 14.7 of FCC1.
 - (g) Special Access DS3 Service Channel Mileage, Banded Base Rates, as applicable, Section 7.5.9(B)(1)(e)(ii) of FCC1.
 - (h) Special Access DS3 Service Channel Mileage, Base Rates, as applicable, Section 7.5.9(B)(1)(e)(i) of FCC1, as determined in accordance with Section 14.7 of FCC1.
 - (i) Special Access DS3 Service DS3 to DS1 Multiplexing, Base Rates, Section 7.5.9(C) of FCC1, as determined in accordance with Section 14.7 of FCC1.

(D)
(D)

(This page filed under Transmittal No. 1392.)

Vice President, Federal Regulatory
1300 I Street NW, Washington, DC 20005

Issued: March 1, 2019

FACILITIES FOR INTERSTATE ACCESS

23. Discount Plans (Cont'd)

23.1 National Discount Plan (Cont'd)

23.1.5 Application of Discount (Cont'd)

(A) Discounted Rate Elements (Cont'd)

(2) The following Discounted Rate Elements from FCC11 are included in NDP:

- (a) Special Access DS1 Service Channel Terminations, Section 30.7.9(A)(1)(a) and Section 31.7.9(A)(1)(a) of FCC11, as determined in accordance with Section 15.3 of FCC11.
- (b) Special Access DS1 Service Channel Mileage, Section 30.7.9(B)(2) and Section 31.7.9(B)(2) of FCC11, as determined in accordance with Section 15.3 of FCC11.
- (c) Special Access DS1 Service DS1 to Voice Multiplexing in New York/Connecticut, Section 30.7.9(C)(1) and Section 31.7.9(C)(1) of FCC11, as determined in accordance with Section 15.3 of FCC11.
- (d) Special Access DS1 Service DS1 to DS0 Multiplexing in New York/Connecticut, Section 30.7.9(C)(1) and Section 31.7.9(C)(1) of FCC11, as determined in accordance with Section 15.3 of FCC11.
- (e) Special Access DS3 Service primary and secondary Channel Terminations with optical and electrical interfaces, Base Rates, Section 30.7.9(A)(1)(c) and Section 31.7.9(A)(1)(c) of FCC11, as determined in accordance with Section 15.3 of FCC11.
- (f) Special Access DS3 Service optical and electrical Channel Mileage, Banded Base Rates, as applicable, Section 31.7.9(B)(4) of FCC11.
- (g) Special Access DS3 Service optical and electrical Channel Mileage, Base Rates, as applicable, Section 30.7.9(B)(4) and Section 31.7.9(B)(4) of FCC11, as determined in accordance with Section 15.3 of FCC11.
- (h) Special Access DS3 Service DS3 to DS1 Multiplexing, Base Rates, Section 30.7.9(C)(1) and Section 31.7.9(C)(1) of FCC11, as determined in accordance with Section 15.3 of FCC11.

(D)
|
(D)

(This page filed under Transmittal No. 1392.)

Vice President, Federal Regulatory
1300 I Street NW, Washington, DC 20005