

CHECK SHEET

Sheets of this tariff indicated below are effective as of the date shown at the bottom of the respective sheet(s). Original and revised sheets as named below comprise all changes from the original tariff and are currently in effect as of the date on the bottom of this sheet.

SHEET	REVISION		SHEET	REVISION	SHEET	REVISION
Title	Original		35	1 st Revised	71	4 th Revised
1	6 th Revised	*	36	Original	72	5 th Revised *
2	Original		37	Original	73	1 st Revised
3	Original		38	Original	74	4 th Revised *
4	Original		39	Original	75	2 nd Revised
5	Original		40	Original	76	3 rd Revised
6	Original		41	Original	77	1 st Revised
7	Original		42	Original	78	3 rd Revised
8	Original		43	Original	79	5 th Revised *
9	Original		44	Original	80	2 nd Revised
10	Original		45	Original	80.1	4 th Revised *
11	Original		46	1 st Revised	80.2	4 th Revised *
12	Original		47	Original	80.3	5 th Revised *
13	Original		48	Original	80.4	2 nd Revised
14	1 st Revised		49	Original	80.5	5 th Revised *
14.1	Original		50	Original	80.6	3 rd Revised
15	Original		51	Original	80.7	1 st Revised
16	Original		52	Original	80.8	3 rd Revised
17	Original		53	Original	80.9	5 th Revised *
18	1 st Revised		54	Original	80.10	4 th Revised *
19	Original		55	Original	80.11	1 st Revised
20	Original		56	Original	80.12	3 rd Revised *
21	Original		57	2 nd Revised *	80.13	3 rd Revised *
22	Original		58	1 st Revised *	80.14	3 rd Revised *
23	Original		59	1 st Revised *	80.15	Original
24	Original		60	1 st Revised *	80.16	Original
25	1 st Revised		61	Original	80.17	1 st Revised *
26	Original		62	1 st Revised	80.18	Original
27	Original		63	1 st Revised	80.19	Original
28	Original		64	Original	80.20	1 st Revised *
29	1 st Revised		65	1 st Revised	81	Original
30	Original		66	4 th Revised *	82	Original
31	Original		67	4 th Revised	83	1 st Revised
32	Original		68	5 th Revised *	84	Original
33	1 st Revised		69	1 st Revised	85	Original
34	Original		70	4 th Revised *	86	Original

Transmittal No. 7

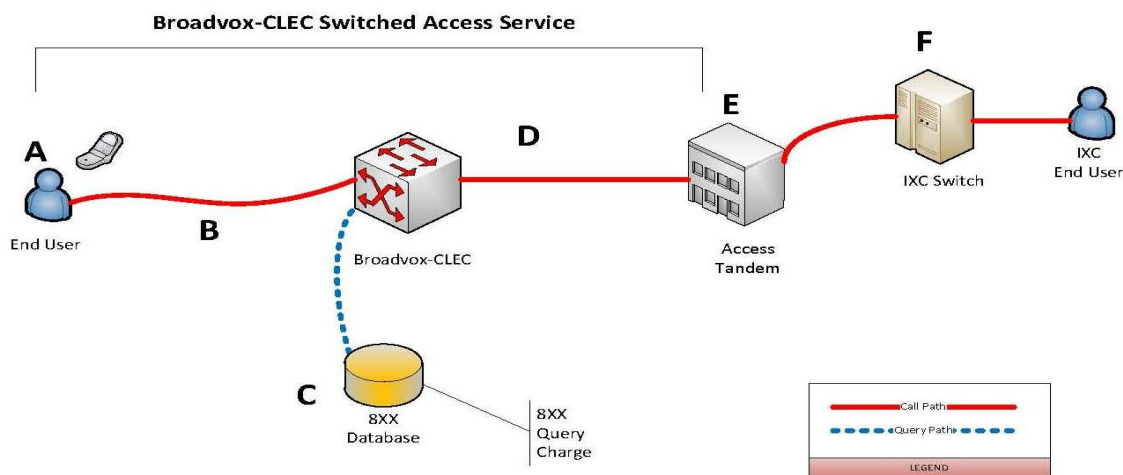
Issued: July 14, 2017

Effective:

July 29, 2017

By:

Mary Buley, Senior Regulatory Manager
75 Erieview Plaza, Suite 400
Cleveland, Ohio 44114

SECTION 3 - SWITCHED ACCESS SERVICE, (CONT'D)**3.9 Call Flow Diagrams****Originating and Terminating Access – Indirect Connection; Broadvox-CLEC End User****Originating Call Flow**

- A. Broadvox-CLEC's End User places a long distance call
- B. Call is routed to Broadvox-CLEC switch
- C. If 8XX call, Broadvox-CLEC switch looks up IXC that should receive the call
- D. Call is routed to Access Tandem over shared transport
- E. Tandem Provider routes call to IXC

Originating Charges

- Broadvox-CLEC charges IXC: Switched Access Service – Indirect Connection, which is comprised of Local Switching, Common Trunk Port, Tandem Switched Transport – Termination, Tandem Switched Transport – Facility, and 8XX query charges, as applicable
- Additional charges may apply per Tandem Provider tariff for functions performed by Tandem Provider

Terminating Call Flow

- F. IXC delivers terminating long distance call to Access Tandem for routing to Broadvox-CLEC's End User
- E. Access Tandem routes call over shared transport (D) to Broadvox-CLEC switch
- B. Call is routed to Broadvox-CLEC's End User(A)

Terminating Charges

- Broadvox-CLEC charges IXC: Switched Access Service – Indirect Connection, which is comprised of Local Switching, Common Trunk Port, Tandem Switched Transport – Termination, and Tandem Switched Transport – Facility
- Additional charges may apply per Tandem Provider tariff for functions performed by Tandem Provider

Transmittal No. 7

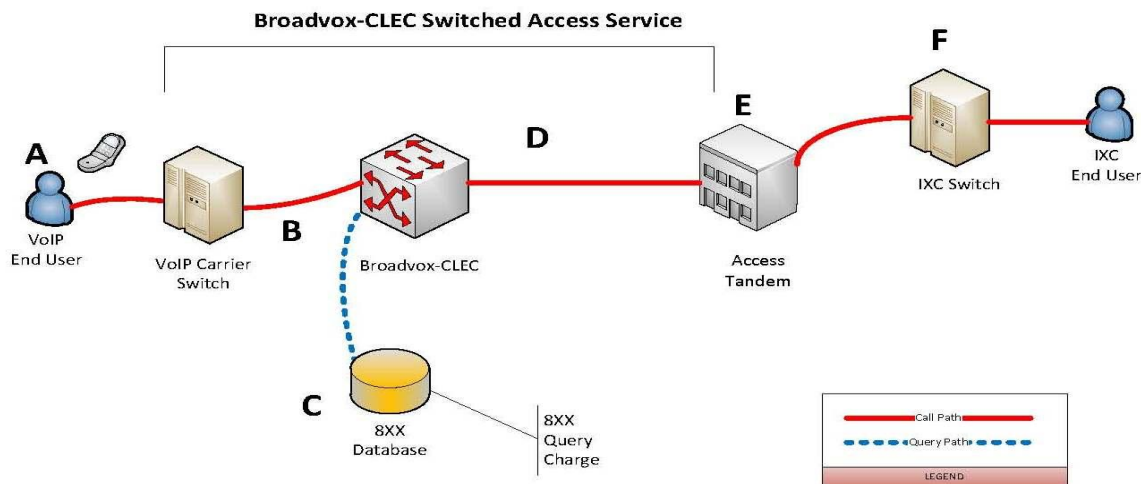
Issued: July 14, 2017

Effective:

July 29, 2017

By:

Mary Buley, Senior Regulatory Manager
75 Erieview Plaza, Suite 400
Cleveland, Ohio 44114

SECTION 3 - SWITCHED ACCESS SERVICE, (CONT'D)**3.9 Call Flow Diagrams (Continued)****Originating and Terminating Access – Indirect Connection; VoIP Carrier End User****Originating Call Flow**

- A. VoIP End User places a long distance call that is routed to VoIP carrier switch
- B. VoIP carrier routes call to Broadvox-CLEC switch.
- C. If 8XX call, Broadvox-CLEC switch looks up IXC that should receive the call
- D. Call is routed to Access Tandem over Shared Transport
- E. Tandem Provider routes call to IXC

Originating Charges

- Broadvox-CLEC charges IXC: Switched Access Service – Indirect Connection, which is comprised of Local Switching, Common Trunk Port, Common Transport Multiplexing, Tandem Switching, Tandem Switched Transport – Termination, Tandem Switched Transport – Facility, and 8XX query charges, as applicable
- Additional charges may apply per Tandem Provider tariff for functions performed by Tandem Provider

Terminating Call Flow

- F. IXC delivers terminating long distance call to Access Tandem for routing to Broadvox-CLEC's telephone number
- E. Access Tandem routes call over shared transport (D) to Broadvox-CLEC switch
- B. Broadvox-CLEC routes the call to the VoIP carrier

Terminating Charges

- Broadvox-CLEC charges IXC (1) Switched Access Service – Indirect Connection, which is comprised of Local Switching, Common Trunk Port, Common Transport Multiplexing, Tandem Switching, Tandem Switched Transport – Termination, and Tandem Switched Transport – Facility
- Additional charges may apply per Tandem Provider tariff for functions performed by Tandem Provider

Transmittal No. 7

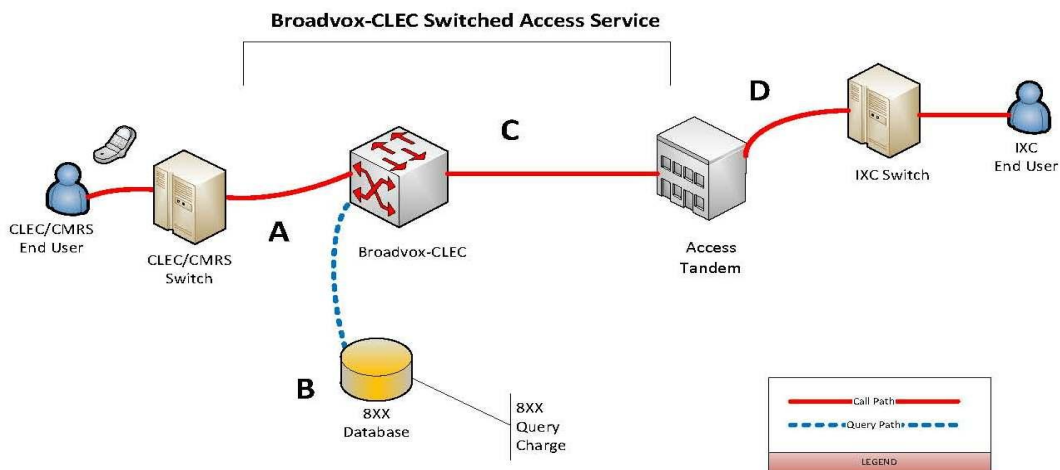
Issued: July 14, 2017

Effective:

July 29, 2017

By:

Mary Buley, Senior Regulatory Manager
75 Erieview Plaza, Suite 400
Cleveland, Ohio 44114

SECTION 3 - SWITCHED ACCESS SERVICE, (CONT'D)**3.9 Call Flow Diagrams (Continued)****Originating and Terminating Access – Indirect Connection; CLEC/CMRS Carrier End User**

(C)

Originating Call Flow

- A. CLEC/CMRS End User places a long distance call that is routed to Broadvox-CLEC switch
- B. If 8XX call, Broadvox-CLEC switch looks up IXC that should receive the call
- C. Call is routed to Access Tandem over shared transport
- D. Tandem Provider routes call to IXC

(C)

(C)

Originating Charges

- Broadvox-CLEC charges IXC: Switched Access Service – Indirect Connection, which is comprised of: Common Trunk Port, Common Transport Multiplexing, Tandem Switching, Tandem Switched Transport – Termination, Tandem Switched Transport – Facility, and 8XX query charges, as applicable
- Additional charges may apply per Tandem Provider tariff for functions performed by Tandem Provider

(C)

Terminating Call Flow

- D. IXC delivers terminating long distance call to Access Tandem for routing to Broadvox-CLEC's telephone number
- C. Access Tandem routes call over shared transport to Broadvox-CLEC switch
- A. Broadvox-CLEC routes the call to the CLEC/CMRS carrier

(C)

(C)

Terminating Charges

- Broadvox-CLEC charges IXC: Switched Access Service – Indirect Connection, which is comprised of: Common Trunk Port, Common Transport Multiplexing, Tandem Switching, Tandem Switched Transport – Termination, and Tandem Switched Transport – Facility
- Additional charges may apply per Tandem Provider tariffs for functions performed by Tandem Provider

(C)

Transmittal No. 7

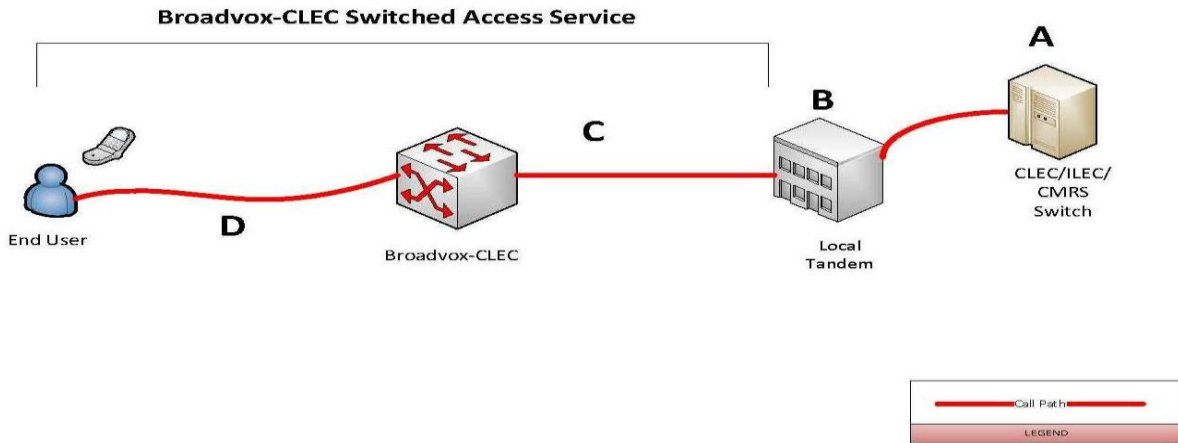
Issued: July 14, 2017

Effective:

July 29, 2017

By:

Mary Buley, Senior Regulatory Manager
75 Erieview Plaza, Suite 400
Cleveland, Ohio 44114

SECTION 3 - SWITCHED ACCESS SERVICE, (CONT'D)**3.9 Call Flow Diagrams (Continued)****Terminating Access for Non-Local Jurisdiction over Local Tandem – Indirect Connection:
CLEC/ILEC/CMRS Carrier End User**

(C)

Terminating Call Flow

- A. CLEC/ILEC/CMRS end user dials an Broadvox-CLEC Telephone Number
- B. CLEC/ILEC/CMRS routes the call to the Local Tandem
- C. Local Tandem Provider switches the call to the Broadvox-CLEC's local trunk group
- D. Call is routed across Shared Transport to the Broadvox-CLEC switch
- E. Broadvox-CLEC routes the call to the end user

(C)

(C)

Terminating Charges

- Broadvox-CLEC charges CLEC/ILEC/CMRS: Local Switching, Common Trunk Port, Common Transport Multiplexing, Tandem Switched Transport – Termination, and Tandem Switched Transport – Facility
- Additional charges may apply per Local Tandem Provider tariff for functions performed by Local Tandem Provider

(C)

Transmittal No. 7

Issued: July 14, 2017

Effective:

July 29, 2017

By:

Mary Buley, Senior Regulatory Manager
75 Erieview Plaza, Suite 400
Cleveland, Ohio 44114

SECTION 3 - SWITCHED ACCESS SERVICE, (CONT'D)**3.11 Other Access Service Rates and Charges – AT&T Territory, (Cont'd.)****3.11.1 Former BellSouth Areas, (Cont'd.)**

(F)	Common Transport Multiplexing (DS3/DS1) Per minute of use	\$0.0003800	
(G)	Common Trunk Port		
	Per minute of use	<u>Originating</u> \$0.0008000	<u>Terminating</u> \$0.0000000
(H)	Local Switching		
	Per minute of use	<u>Originating</u> \$0.0021260	<u>Terminating</u> \$0.000000 (R)
(I)	Carrier Common Line Originating/terminating		
		\$0.0000000	
(J)	Interconnection Charge Per minute of use		
		\$0.0000000	
(K)	Database Charges LNP Query - per query 800 Query Basic, per query POTS translation, per query		
	LNP Query - per query	\$0.0020020	
	800 Query		
	Basic, per query	\$0.0080000	
	POTS translation, per query	\$0.0000000	

Transmittal No. 7

Issued: July 14, 2017

Effective:

July 29, 2017

By:

Mary Buley, Senior Regulatory Manager
75 Erieview Plaza, Suite 400
Cleveland, Ohio 44114

SECTION 3 - SWITCHED ACCESS SERVICE, (CONT'D)**3.11 Other Access Service Rates and Charges – AT&T Territory, (Cont'd.)****3.11.2 Former SBC and Ameritech Areas, (Cont'd.)**

(G)	Common Transport Multiplexing (DS3/DS1) Per minute of use	SBC Areas \$0.0000470	Ameritech Areas \$0.0000150
(H)	Common Trunk Port Originating, Per minute of use Terminating, Per minute of use	SBC Areas \$0.0009000 \$0.0000000	Ameritech Areas \$0.0003710 \$0.0000000
(I)	Local Switching Originating, Per minute of use Terminating, Per minute of use	SBC Areas \$0.0025630 \$0.000000 (R)	Ameritech Areas \$0.0031160 \$0.000000 (R)
(J)	Carrier Common Line Per minute of use	SBC Areas \$0.0000000	Ameritech Areas \$0.0000000
(K)	Interconnection Charge Per minute of use	SBC Areas \$0.0000000	Ameritech Areas \$0.0000000
(L)	Database Charges LNP Query - per query 800 Query Basic, per query POTS translation, per query	SBC Areas \$0.0020020 \$0.0080000 \$0.0000000	Ameritech Areas \$0.0020020 \$0.0080000 \$0.0000000

Transmittal No. 7

Issued: July 14, 2017

By:

Mary Buley, Senior Regulatory Manager
75 Erieview Plaza, Suite 400
Cleveland, Ohio 44114

Effective:

July 29, 2017

SECTION 3 - SWITCHED ACCESS SERVICE, (CONT'D)**3.11 Other Access Service Rates and Charges – AT&T Territory, (Cont'd.)****3.11.3 Former PacBell Areas, (Cont'd.)**

(G)	Common Transport Multiplexing (DS3/DS1) Per minute of use		\$0.0000980
(H)	Common Trunk Port Per minute of use	<u>Originating</u> \$0.0046960	<u>Terminating</u> \$0.0000000
(I)	Local Switching Per minute of use	<u>Originating</u> \$0.0026200	<u>Terminating</u> \$0.000000 (R)
(J)	Carrier Common Line Per minute of use		\$0.0000000
(K)	Interconnection Charge Per minute of use		\$0.0000000
(L)	Database Charges LNP Query - per query 800 Query Basic, per query POTS translation, per query		\$0.0020020 \$0.0080000 \$0.0000000

Transmittal No. 7

Issued: July 14, 2017

Effective:

July 29, 2017

By:

Mary Buley, Senior Regulatory Manager
75 Erieview Plaza, Suite 400
Cleveland, Ohio 44114

SECTION 3 - SWITCHED ACCESS SERVICE, (CONT'D)**3.12 Other Access Service Rates and Charges - CenturyLink (former Qwest) Territory, (Cont'd.)**

(G)	Common Transport Multiplexing (DS3/DS1) Per minute of use	\$0.0000360	
(H)	Common Trunk Port Per minute of use	<u>Originating</u> \$0.0007470	<u>Terminating</u> \$0.0000000
(I)	Local Switching Per minute of use	<u>Originating</u> \$0.0019740	<u>Terminating</u> \$0.0000000 (R)
(J)	Carrier Common Line Per minute of use	\$0.0000000	
(K)	Interconnection Charge Per minute of use	\$0.0000000	
(L)	Database Charges LNP Query - per query 800 Query Basic, per query POTS translation, per query	\$0.0020020	
		\$0.0080000	
		\$0.0020915	

Transmittal No. 7

Issued: July 14, 2017

Effective:

July 29, 2017

By:

Mary Buley, Senior Regulatory Manager
75 Erieview Plaza, Suite 400
Cleveland, Ohio 44114

SECTION 3 - SWITCHED ACCESS SERVICE, (CONT'D)**3.13 Other Access Service Rates and Charges – Verizon Territory, (Cont'd.)****3.13.1 Former Bell Atlantic Areas (Cont'd.)**

(G)	Common Transport Multiplexing (DS3/DS1) Per minute of use	\$0.0000000	
(H)	Common Trunk Port Per minute of use	<u>Originating</u> \$0.0016880	<u>Terminating</u> \$0.000000
(I)	Local Switching, per minute of use CT, MA, NY, RI DC, DE, MD, NJ, PA, VA	<u>Originating</u> \$0.0024060 \$0.0024060	<u>Terminating</u> ¹ \$0.000000 (R) \$0.000000 (R)
	Per minute of use		
(J)	Carrier Common Line Per minute of use	\$0.0000000	
(K)	Interconnection Charge Per minute of use		
(L)	Database Charges		
	LNP Query - per query	\$0.0020020	
	800 Query		
	Basic, per query	\$0.0080000	
	POTS translation, per query	\$0.0019890	

¹Equivalent to Verizon's "Composite Terminating End Office Charge"

SECTION 3 - SWITCHED ACCESS SERVICE, (CONT'D)**3.14 Other Access Service Rates and Charges - Verizon Territory (Former GTE), (Cont'd.)****3.14.9 Local Switching, per minute of use**

	<u>Originating</u>	<u>Terminating</u> ¹
VA	\$0.0024060	\$0.000000 (R)

3.14.10 Carrier Common Line, per minute of use

Originating – All States	\$0.0000000
Terminating – All States	\$0.0000000

¹Equivalent to Verizon's "Composite Terminating End Office Charge"

Transmittal No. 7

Issued: July 14, 2017

Effective:

July 29, 2017

By:

Mary Buley, Senior Regulatory Manager
75 Erieview Plaza, Suite 400
Cleveland, Ohio 44114

SECTION 3 - SWITCHED ACCESS SERVICE, (CONT'D)**3.16 Other Access Service Rates and Charges – AT&T – Nevada Territory**

3.16.1	Dedicated Multiplexing	<u>NRC</u> \$0.00	<u>Monthly</u> \$131.25
3.16.2	Dedicated Trunk Port ¹		
	Per DS1	<u>Originating</u> \$330.00	<u>Terminating</u> \$0.00
3.16.3	Dedicated Tandem Trunk Port Per DS1		\$28.80
3.16.4	Tandem Switching Per minute of use		\$0.001062
3.16.5	Tandem Switched Transport - Termination Per minute of use		\$0.00012
3.16.6	Tandem Switched Transport – Facility Per minute of use per mile		\$0.000008
3.16.7	Common Transport Multiplexing Per minute of use		\$0.00001800
3.16.8	Common Trunk Port		
	Per minute of use	<u>Originating</u> \$0.001663	<u>Terminating</u> \$0.000000
3.16.9	Local Switching		
	Per minute of use	<u>Originating</u> \$0.001342	<u>Terminating</u> \$0.000000 (R)
3.16.10	800 Database Query Per minute of use		\$0.008

¹ The Dedicated Trunk Port is billed as originating and terminating based on a Percent Originating Usage (POU) factor of 50%.

Transmittal No. 7

Issued: July 14, 2017

Effective:

July 29, 2017

By:

Mary Buley, Senior Regulatory Manager
75 Erieview Plaza, Suite 400
Cleveland, Ohio 44114

SECTION 3 - SWITCHED ACCESS SERVICE, (CONT'D)**3.17 Other Access Service Rates and Charges – Hawaiian Telecom Territory**

3.17.1	Dedicated Multiplexing	<u>NRC</u> \$450.00	<u>Monthly</u> \$396.04
3.17.2	Dedicated Trunk Port		
	Per DS1		\$125.76
3.17.3	Dedicated Tandem Trunk Port		
	Per DS1		\$193.00
3.17.4	Tandem Switching		
	Per minute of use		\$0.0012
3.17.5	Tandem Switched Transport - Termination		
	Per minute of use		\$0.00013
3.17.6	Tandem Switched Transport – Facility		
	Per minute of use per mile		\$0.00003
3.17.7	Common Transport Multiplexing		
	Per minute of use		\$0.0000356
3.17.8	Common Trunk Port		
	Per minute of use	<u>Originating</u> \$0.0008098	<u>Terminating</u> \$0.0000000
3.17.9	Local Switching		
	Per minute of use	<u>Originating</u> \$0.0017835	<u>Terminating</u> \$0.0000000 (R)
3.17.10	800 Database Query		
	Per minute of use		\$0.0082007

Transmittal No. 7

Issued: July 14, 2017

Effective:

July 29, 2017

By:

Mary Buley, Senior Regulatory Manager
75 Erieview Plaza, Suite 400
Cleveland, Ohio 44114

SECTION 3 - SWITCHED ACCESS SERVICE, (CONT'D)**3.18 Other Access Service Rates and Charges Windstream Territory****3.18.1 Dedicated Multiplexing**

	<u>NRC</u>	<u>Monthly</u>
GA	N/A	\$302.10
KY EAST - Lexington	N/A	\$365.15
KY EAST - London	N/A	\$500.00
KY WEST	N/A	\$302.10
NC	N/A	\$302.10
OH	N/A	\$302.10
OH - Western Reserve	N/A	\$302.10
PA	N/A	\$302.10
TX	N/A	\$302.10

3.18.2 Dedicated Trunk Port

Per DS1 - GA	\$20.88	(R)
Per DS1 - KY EAST - Lexington	\$109.92	
Per DS1 - KY EAST - London	\$84.00	
Per DS1 - KY WEST	\$89.28	
Per DS1 - NC	\$32.40	
Per DS1 - OH	\$11.76	
Per DS1 - OH - Western Reserve	\$11.76	
Per DS1 - PA	\$33.60	
Per DS1 - TX	\$28.08	(R)

3.18.3 Dedicated Tandem Trunk Port

Per DS1 - GA	\$122.88
Per DS1 - KY EAST - Lexington	\$140.88
Per DS1 - KY EAST - London	\$127.92
Per DS1 - KY WEST	\$0.00
Per DS1 - NC	\$122.88
Per DS1 - OH	\$122.88
Per DS1 - OH - Western Reserve	\$122.88
Per DS1 - PA	\$122.88
Per DS1 - TX	\$122.88

Transmittal No. 7

Issued: July 14, 2017

Effective:

July 29, 2017

By:

Mary Buley, Senior Regulatory Manager
75 Erieview Plaza, Suite 400
Cleveland, Ohio 44114

SECTION 3 - SWITCHED ACCESS SERVICE, (CONT'D)**3.18 Other Access Service Rates and Charges Windstream Territory, (Cont'd.)****3.18.8 Common Trunk Port**

	<u>Originating</u>	<u>Terminating</u>
Per minute of use - GA	\$0.0009260	\$0.000000 (R)
Per minute of use - KY EAST	\$0.0007029	\$0.000000 (R)
Per minute of use - KY WEST	\$0.0011840	\$0.000000 (R)
Per minute of use - NC	\$0.0008090	\$0.000000 (R)
Per minute of use - OH	\$0.0011770	\$0.000000 (R)
Per minute of use - OH - Western Reserve	\$0.0013860	\$0.000000 (R)
Per minute of use - PA	\$0.0006070	\$0.000000 (R)
Per minute of use - TX	\$0.0008840	\$0.000000 (R)

3.18.9 Local Switching

	<u>Originating</u>	<u>Terminating</u>
Per minute of use - GA	\$0.0031950	\$0.000000 (R)
Per minute of use - KY EAST	\$0.0013823	\$0.000000 (R)
Per minute of use - KY WEST	\$0.0037750	\$0.000000 (R)
Per minute of use - NC	\$0.0032320	\$0.000000 (R)
Per minute of use - OH	\$0.0027200	\$0.000000 (R)
Per minute of use - OH - Western Reserve	\$0.0025300	\$0.000000 (R)
Per minute of use - PA	\$0.0030240	\$0.000000 (R)
Per minute of use - TX	\$0.0026610	\$0.000000 (R)

3.18.10 800 Database Query

Per minute of use - GA	\$0.008
Per minute of use - KY EAST	\$0.008
Per minute of use - KY WEST	\$0.008
Per minute of use - NC	\$0.008
Per minute of use - OH	\$0.008
Per minute of use - OH - Western Reserve	\$0.008
Per minute of use - PA	\$0.008
Per minute of use - TX	\$0.008

Transmittal No. 7

Issued: July 14, 2017

Effective:

July 29, 2017

By:

Mary Buley, Senior Regulatory Manager
75 Erieview Plaza, Suite 400
Cleveland, Ohio 44114

SECTION 3 - SWITCHED ACCESS SERVICE, (CONT'D)**3.19 Other Access Service Rates and Charges CenturyLink (former Embarq) Territory,
(Cont'd.)****3.19.9 Local Switching**

	<u>Originating</u>	<u>Terminating</u>
Per minute of use - FL	\$0.003568	\$0.000000 (R)
Per minute of use - KS	\$0.003983	\$0.000000 (R)
Per minute of use - MN	\$0.003983	\$0.000000 (R)
Per minute of use - MO	\$0.003983	\$0.000000 (R)
Per minute of use - NJ	\$0.003892	\$0.000000 (R)
Per minute of use - NC	\$0.003735	\$0.000000 (R)
Per minute of use - NV	\$0.004130	\$0.000000 (R)
Per minute of use - OH	\$0.003644	\$0.000000 (R)
Per minute of use - OR	\$0.003770	\$0.000000 (R)
Per minute of use - PA	\$0.003892	\$0.000000 (R)
Per minute of use - TX	\$0.003983	\$0.000000 (R)
Per minute of use - WA	\$0.003770	\$0.000000 (R)

3.19.10 800 Database Query

Per minute of use - FL	\$0.008843
Per minute of use - KS	\$0.008000
Per minute of use - MN	\$0.008000
Per minute of use - MO	\$0.008000
Per minute of use - NJ	\$0.008000
Per minute of use - NC	\$0.008046
Per minute of use - NV	\$0.012072
Per minute of use - OH	\$0.008000
Per minute of use - OR	\$0.008252
Per minute of use - PA	\$0.008000
Per minute of use - TX	\$0.008000
Per minute of use - WA	\$0.008252

Transmittal No. 7

Issued: July 14, 2017

Effective:

July 29, 2017

By:

Mary Buley, Senior Regulatory Manager
75 Erieview Plaza, Suite 400
Cleveland, Ohio 44114

SECTION 3 - SWITCHED ACCESS SERVICE, (CONT'D)**3.20 Other Access Service Rates and Charges Cincinnati Bell Territory**

3.20.1	Dedicated Multiplexing	<u>NRC</u> N/A	<u>Monthly</u> \$678.02
3.20.2	Dedicated Trunk Port Per DS1		\$0.00 (R)
3.20.3	Dedicated Tandem Trunk Port Per DS1		\$147.84
3.20.4	Tandem Switching Per minute of use		\$0.002001
3.20.5	Tandem Switched Transport - Termination Per minute of use		\$0.0006
3.17.6	Tandem Switched Transport – Facility Per minute of use per mile		\$0.000117
3.17.7	Common Transport Multiplexing Per minute of use		\$0.00024
3.17.8	Common Trunk Port Per minute of use	<u>Originating</u> \$0.000968	<u>Terminating</u> \$0.000000 (R)
3.17.9	Local Switching Per minute of use	<u>Originating</u> \$0.0038625	<u>Terminating</u> \$0.000000 (R)
3.17.10	800 Database Query Per minute of use		\$0.008

Transmittal No. 7

Issued: July 14, 2017

Effective:

July 29, 2017

By:

Mary Buley, Senior Regulatory Manager
75 Erieview Plaza, Suite 400
Cleveland, Ohio 44114

SECTION 3 - SWITCHED ACCESS SERVICE, (CONT'D)**3.21 Other Access Service Rates and Charges – Verizon (former Contel) Areas, (Cont'd.)**

(G)	Common Transport Multiplexing (DS3/DS1), Per minute of use		
	North Carolina		\$0.0000000
	Pennsylvania		\$0.0000000
	Virginia		\$0.0000000
(H)	Common Trunk Port, Per minute of use		
		<u>Originating</u>	<u>Terminating</u>
	North Carolina	\$0.0016880	\$0.0000000
	Pennsylvania	\$0.0016880	\$0.0000000
	Virginia	\$0.0016880	\$0.0000000
(I)	Local Switching, Per minute of use		
		<u>Originating</u>	<u>Terminating</u>
	North Carolina	\$0.0024060	\$0.000000 ¹ (R)
	Pennsylvania	\$0.0024060	\$0.000000 ¹ (R)
	Virginia	\$0.0024060	\$0.000000 ¹ (R)
(J)	Carrier Common Line, Per minute of use		
	North Carolina		\$0.0000000
	Pennsylvania		\$0.0000000
	Virginia		\$0.0000000
(K)	Interconnection Charge, Per minute of use		
	All States		\$0.0000000
(L)	Database Charges		
	800 Query – All States		\$0.0043560

¹Equivalent to Verizon's "Composite Terminating End Office Charge"

SECTION 3 - SWITCHED ACCESS SERVICE, (CONT'D)**3.22 Other Access Service Rates and Charges – CenturyLink (former CenturyTel) Territory**

3.22.1	Dedicated Multiplexing		
	TX - Port Aransas	<u>Monthly</u>	\$429.86
3.22.2	Dedicated Trunk Port		
	Per DS1 – TX (Port Aransas)		\$7.20
3.22.3	Dedicated Tandem Trunk Port		
	Per DS1 – TX (Port Aransas)		\$189.36
3.22.4	Tandem Switching		
	Per minute of use - TX (Port Aransas)		\$0.002315
3.22.5	Tandem Switched Transport - Termination		
	Per minute of use - TX (Port Aransas)		\$0.000501
3.22.6	Tandem Switched Transport – Facility		
	Per minute of use - TX (Port Aransas)		\$0.000182
3.22.7	Common Transport Multiplexing		
	Per minute of use - TX (Port Aransas)		\$0.000424
3.22.8	Common Trunk Port		
	Per minute of use - TX (Port Aransas)	<u>Originating</u>	<u>Terminating</u>
		\$0.003383	\$0.000000
3.22.9	Local Switching		
	Per minute of use - TX (Port Aransas)	<u>Originating</u>	<u>Terminating</u>
		\$0.003642	\$0.000000 (R)
3.22.10	800 Database Query		
	Per minute of use - TX (Port Aransas)		\$0.008000

Transmittal No. 7

Issued: July 14, 2017

Effective: July 29, 2017

By:

Mary Buley, Senior Regulatory Manager
75 Erieview Plaza, Suite 400
Cleveland, Ohio 44114

SECTION 3 - SWITCHED ACCESS SERVICE, (CONT'D)**3.23 Other Access Service Rates and Charges – Frontier (former SNET) Territory**

3.23.1	Dedicated Multiplexing		<u>Monthly</u> \$550.50
3.23.2	Dedicated Trunk Port		
	Per DS1		\$140.00
3.23.3	Dedicated Tandem Trunk Port		
	Per DS1		\$56.00
3.23.4	Tandem Switching		
	Per minute of use		\$0.0006340
3.23.5	Tandem Switched Transport - Termination		
	Per minute of use		\$0.0000630
3.23.6	Tandem Switched Transport – Facility		
	Per minute of use per mile		\$0.0000030
3.23.7	Common Transport Multiplexing		
	Per minute of use		\$0.0000820
3.23.8	Common Trunk Port		
	Per minute of use	<u>Originating</u> \$0.0014000	<u>Terminating</u> \$0.0000000
3.23.9	Local Switching		
	Per minute of use	<u>Originating</u> \$0.0031330	<u>Terminating</u> \$0.000000 (R)
3.23.10	800 Database Query		
	Per minute of use		\$0.008000

Transmittal No. 7

Issued: July 14, 2017

Effective:

July 29, 2017

By:

Mary Buley, Senior Regulatory Manager
75 Erieview Plaza, Suite 400
Cleveland, Ohio 44114

SECTION 3 - SWITCHED ACCESS SERVICE, (CONT'D)**3.24 Other Access Service Rates and Charges - Frontier (former Verizon GTE) Territory, (Cont'd.)**

3.24.8 Common Trunk Port, per minute of use

	<u>Originating</u>	<u>Terminating</u>
CA	\$0.0016920	\$0.0000000
FL	\$0.0016920	\$0.0000000
TX	\$0.0016920	\$0.0000000

3.24.9 Local Switching, per minute of use

	<u>Originating</u>	<u>Terminating</u> ¹
CA	\$0.0019019	\$0.0000000 (R)
FL	\$0.0020995	\$0.0000000 (R)
TX	\$0.0024060	\$0.0000000 (R)

3.24.10 Carrier Common Line, per minute of use

Originating – All States	\$0.0000000
Terminating – All States	\$0.0000000

¹Equivalent to Verizon's "Composite Terminating End Office Charge"

SECTION 3 - SWITCHED ACCESS SERVICE, (CONT'D)**3.25 Other Access Service Rates and Charges – Frontier (former Verizon Contel) Territory, (Cont'd.)**

(G)	Common Transport Multiplexing (DS3/DS1), Per minute of use		
	California		\$0.0000000
	Texas		\$0.0000000
(H)	Common Trunk Port, Per minute of use		
		<u>Originating</u>	<u>Terminating</u>
	California	\$0.0016920	\$0.0000000
	Texas	\$0.0016920	\$0.0000000
(I)	Local Switching, Per minute of use		
		<u>Originating</u>	<u>Terminating</u>
	California	\$0.0019019	\$0.000000 ¹ (R)
	Texas	\$0.0024060	\$0.000000 ¹ (R)
(J)	Carrier Common Line, Per minute of use		
	California		\$0.0000000
	Texas		\$0.0000000
(K)	Interconnection Charge, Per minute of use		
	All States		\$0.0000000
(L)	Database Charges		
	800 Query - California		\$0.0086681
	800 Query - Texas		\$0.0043560

¹Equivalent to Verizon's "Composite Terminating End Office Charge"

Transmittal No. 7

Issued: July 14, 2017

Effective:

July 29, 2017

By:

Mary Buley, Senior Regulatory Manager
75 Erieview Plaza, Suite 400
Cleveland, Ohio 44114