
INTERSTATE SWITCHED ACCESS SERVICES TARIFF

CHECK SHEET

Page 1 to 47, inclusive of this tariff are effective as of the date shown.

SHEET	REVISION		SHEET	REVISION	
Title	1 st Revised		39.10	Original	*
1	2 nd Revised	*	39.11	Original	*
1.1	Original		39.12	Original	*
3	1 st Revised		39.13	Original	*
4	1 st Revised		40	4 th Revised	*
4.1	1 st Revised		40.1	3 rd Revised	*
5	1 st Revised		40.2	3 rd Revised	*
5.1	1 st Revised		40.3	2 nd Revised	*
5.2	1 st Revised		40.4	1 st Revised	
10	1 st Revised		40.5	1 st Revised	
11	1 st Revised		40.6	2 nd Revised	*
26	1 st Revised		40.7	1 st Revised	*
27	Original		40.8	1 st Revised	*
33	1 st Revised		40.9	Original	*
33.1	Original		40.10	Original	*
34	1 st Revised		40.11	Original	*
35	1 st Revised				
36	2 nd Revised				
36.1	1 st Revised	*			
36.2	Original	*			
37	3 rd Revised	*			
38	1 st Revised				
39	4 th Revised	*			
39.1	Original	*			
39.2	Original	*			
39.3	Original	*			
39.4	Original	*			
39.5	Original	*			
39.6	Original	*			
39.7	Original	*			
39.8	Original	*			
39.9	Original	*			

* New or Revised Page.

Transmittal # 5

Issued: July 31, 2012

Effective: August 1, 2012

By: Jeffrey A. Hoffman, Chief Financial Officer
4001 Weston Parkway
Cary, NC 27513

INTERSTATE SWITCHED ACCESS SERVICES TARIFF

SECTION 5 – SWITCHED ACCESS RATES

5.2 Rate Categories

5.2.1 Tandem Switching Access Service

A. Direct Connection (Originating and Terminating)

(T)

Tandem Switching Access Service – Direct Connection is an access service providing transmission and tandem switching between the Customer designated premises and the Company switch(es) where the Customer's traffic is switched from or to an entity other than an End User for purposes of originating or terminating the Customer's communications, and where the Customer's switch is connected directly to the Company's switch. The following rate elements will apply to Tandem Switching Access Service – Direct Connection: Access Tandem Switching, Tandem-Switched Transport Termination and Common Multiplexing, Tandem-Switched Transport –Facility, and Dedicated Trunk Port. For originating 8YY calls, the Toll-Free 8YY Data Base Query charge will also apply. With Direct Connection, Customer is responsible for ordering or providing dedicated facilities of reasonable and appropriate bandwidth to the Company's point of presence in the access tandem serving area. The Dedicated Trunk Port charge applies on an Individual Case Basis. The application of access charges to Tandem Switching Access Service is illustrated in diagrams at the end of this Section 5.

(T)

(T)

(C)

(C)

(N)

|

|

|

|

|

(N)

B. Indirect Connection (Originating and Terminating)

(N)|

Tandem Switching Access Service – Indirect Connection is an access service providing transmission and tandem switching between the Customer designated premises and the Company switch(es) as well as transport to or from the Customer's tandem provider, where the Customer's traffic is switched from or to an entity other than an End User for purposes of originating or terminating the Customer's communications. The following rate elements will apply to Tandem Switching Access Service – Indirect Connection: Access Tandem Switching, Tandem-Switched Transport Termination and Common Multiplexing, and Tandem-Switched Transport –Facility. For originating 8YY calls, the Toll-Free 8YY Data Base Query charge will also apply. The third-party access tandem provider may apply additional charges for switching and transport functions performed by that provider. The application of access charges to Tandem Switching Access Service is illustrated in diagrams at the end of this Section 5.

(N)(M)

|

(M)

Certain material on this page is now located on page 36.2

Transmittal # 5

Issued: July 31, 2012

Effective: August 1, 2012

By: Jeffrey A. Hoffman, Chief Financial Officer
4001 Weston Parkway
Cary, NC 27513

 INTERSTATE SWITCHED ACCESS SERVICES TARIFF

SECTION 5 – SWITCHED ACCESS RATES

5.2 Rate Categories

5.2.2 Local Switching Access Service - Direct Connection (Originating and Terminating)

(M)(C)

Local Switching Access Service - Direct Connection is an access service providing the Customer connections to and use of end office switching equipment for the origination or termination of the Customer's communications to the Company's End Users or VoIP End Users. Charges for Local Switching Access Service - Direct Connection rate consists of End Office Switching charges and a Dedicated Trunk Port charge. With Direct Connection, Customer is responsible for ordering or providing dedicated facilities of reasonable and appropriate bandwidth to the Company's point of presence in the access tandem serving area. The dedicated trunk port charge applies on an Individual Case Basis. The application of access charges to Local Switching Access Service is illustrated in diagrams at the end of this Section 5

(M)(C)

Material located on this page was previously located on page 36.2

 Transmittal # 5

Issued: July 31, 2012

Effective: August 1, 2012

By: Jeffrey A. Hoffman, Chief Financial Officer
4001 Weston Parkway
Cary, NC 27513

INTERSTATE SWITCHED ACCESS SERVICES TARIFF

SECTION 5 – SWITCHED ACCESS RATES, (Cont'd.)

5.2 Rate Categories, (Cont'd.)

5.2.3 Local Switching Access Service - Indirect Connection (Originating and Terminating)

Local Switching Access Service - Indirect Connection is an access service providing the Customer use of end office switching equipment for the origination or termination of the Customer's communications to the Company's End Users or VoIP End Users as well as transport to or from the Customer's tandem provider. Charges for Local Switching Access Service - Indirect Connection include the following rate elements: End Office Switching , Common Trunk Port, Tandem Switched Transport Termination and Common Multiplexing, and Tandem Switched Transport Facility. The third-party access tandem provider may apply additional charges for switching and transport functions performed by that provider. The application of access charges to Local Switching Access Service is illustrated in diagrams at the end of this Section 5.

(C)
|
|
|
|
|
(C)

5.2.4 Toll-Free 8YY Data Base Query

The Toll-Free 8YY Data Base Query Charge, will apply for each Toll-Free 8YY call query received at the Company's (or its provider's) Toll-Free 8YY database.

5.2.5 Toll-Free 8YY Switched Access Service

The Toll-Free 8YY Switched Access Service is an originating access service in which the Company delivers Toll Free calls to Customers.

(D)
(D)

5.2.6 Optional Features

Other optional features may be available on an Individual Case Basis (ICB).

Transmittal # 5

Issued: July 31, 2012

Effective: August 1, 2012

By: Jeffrey A. Hoffman, Chief Financial Officer
4001 Weston Parkway
Cary, NC 27513

INTERSTATE SWITCHED ACCESS SERVICES TARIFF

SECTION 5 – SWITCHED ACCESS RATES, (Cont'd.)

5.4 Rates and Charges

5.4.1 AT&T Territory

A. Illinois, Indiana, Michigan, Ohio and Wisconsin

Tandem-Switched Transport - Termination, per minute	\$0.000103
Tandem-Switched Transport - Facility, per minute per mile	\$0.000013
Access Tandem Switching, per minute	\$0.001084
CMUX, per minute	\$0.000015
CTP, per minute, all zones	\$0.000371

End Office Switching, per minute, all zones	\$0.003116
---	------------

B. Arkansas, Kansas, Missouri, Oklahoma, Texas, all zones

Tandem-Switched Transport - Termination, per minute	\$0.000053
Tandem-Switched Transport - Facility, per minute per mile	\$0.000003
Access Tandem Switching, per minute	\$0.000288
CMUX, per minute	\$0.000047
CTP, per minute	\$0.000900

End Office Switching, per minute	\$0.002563
----------------------------------	------------

Certain material located on this page was previously located on pages 40, 40.1 and 40.2.

Transmittal # 5

Issued: July 31, 2012

Effective: August 1, 2012

By: Jeffrey A. Hoffman, Chief Financial Officer
4001 Weston Parkway
Cary, NC 27513

INTERSTATE SWITCHED ACCESS SERVICES TARIFF

SECTION 5 – SWITCHED ACCESS RATES, (Cont'd.)

5.4 Rates and Charges, (Cont'd.)

5.4.1 AT&T Territory, (Cont'd.)

C. California

Tandem-Switched Transport - Termination, per minute	\$0.000075
Tandem-Switched Transport - Facility, per minute per mile	\$0.000015
Access Tandem Switching, per minute	\$0.000440
CMUX, per minute	\$0.000098
CTP, per minute, all zones	\$0.004696
End Office Switching, per minute, all zones	\$0.002620

D. Nevada

Tandem-Switched Transport - Termination, per minute	\$0.000120
Tandem-Switched Transport - Facility, per minute per mile	\$0.000008
Access Tandem Switching, per minute	\$0.001062
CMUX, per minute	\$0.000018
CTP, per minute	\$0.001663
End Office Switching, per minute	\$0.001342

Certain material located on this page was previously located on pages 39, 40, 40.1 and 40.2.

Transmittal # 5

Issued: July 31, 2012

Effective: August 1, 2012

By: Jeffrey A. Hoffman, Chief Financial Officer
4001 Weston Parkway
Cary, NC 27513

(M)

(M)

INTERSTATE SWITCHED ACCESS SERVICES TARIFF

SECTION 5 – SWITCHED ACCESS RATES, (Cont'd.)

5.4 Rates and Charges, (Cont'd.)

5.4.1 AT&T Territory, (Cont'd.)

E. Connecticut (AT&T/SNET Territory), all zones

Tandem-Switched Transport - Termination, per minute	\$0.000063
Tandem-Switched Transport - Facility, per minute per mile	\$0.000003
Access Tandem Switching, per minute	\$0.000634
CMUX, per minute	\$0.000082
CTP, per minute	\$0.001400

End Office Switching, per minute	\$0.003133
----------------------------------	------------

F. Alabama, Florida, Georgia, Kentucky, Louisiana, Mississippi, North Carolina, South Carolina, Tennessee, all zones

Tandem-Switched Transport - Termination, per minute	\$0.000168
Tandem-Switched Transport - Facility, per minute per mile	\$0.000020(Z)
Access Tandem Switching, per minute	\$0.001145
CMUX, per minute	\$0.000380
CTP, per minute	\$0.000800

End Office Switching, per minute	\$0.002089
----------------------------------	------------

(M)

(M)

Certain material located on this page was previously located on pages 39, 40, 40.1 and 40.2.

Transmittal # 5

Issued: July 31, 2012

Effective: August 1, 2012

By: Jeffrey A. Hoffman, Chief Financial Officer
4001 Weston Parkway
Cary, NC 27513

INTERSTATE SWITCHED ACCESS SERVICES TARIFF

SECTION 5 – SWITCHED ACCESS RATES, (Cont'd.)

5.4 Rates and Charges, (Cont'd.)

5.4.2 CenturyLink QC (formerly Qwest) Territory

Arizona, Colorado, Idaho, Iowa, Minnesota, Montana, Nebraska, New Mexico, North
Dakota, Oregon, South Dakota, Utah, Washington and Wyoming

Tandem-Switched Transport - Termination, per minute	\$0.000240
Tandem-Switched Transport - Facility, per minute, per mile	\$0.000030
Access Tandem Switching, per minute	\$0.002252
CMUX, per minute	\$0.000036
CTP, per minute	\$0.000747
End Office Switching, per minute	\$0.001974

(M)

(M)

Certain material located on this page was previously located on pages 39, 40, 40.1 and 40.2.

Transmittal # 5

Issued: July 31, 2012

Effective: August 1, 2012

By: Jeffrey A. Hoffman, Chief Financial Officer
4001 Weston Parkway
Cary, NC 27513

 INTERSTATE SWITCHED ACCESS SERVICES TARIFF

SECTION 5 – SWITCHED ACCESS RATES, (Cont'd.)

5.4 Rates and Charges, (Cont'd.)

5.4.3 CenturyLink (formerly Embarq) Territory

A. Florida

Tandem-Switched Transport - Termination, per minute	0.000365
Tandem-Switched Transport - Facility, per minute per mile	\$0.000035
Access Tandem Switching, per minute	\$0.001197
CMUX, per minute	\$0.000327
CTP, per minute, all zones	\$0.000557

End Office Switching, per minute, all zones	\$0.003568
---	------------

B. Indiana, all zones

Tandem-Switched Transport - Termination, per minute	\$0.000253
Tandem-Switched Transport - Facility, per minute per mile	\$0.000040
Access Tandem Switching, per minute	\$0.000210
CMUX, per minute	\$0.000280
CTP, per minute	\$0.000406

End Office Switching, per minute	\$0.003747
----------------------------------	------------

Certain material located on this page was previously located on pages 39 and 40.1.

 Transmittal # 5

Issued: July 31, 2012

Effective: August 1, 2012

By: Jeffrey A. Hoffman, Chief Financial Officer
4001 Weston Parkway
Cary, NC 27513

INTERSTATE SWITCHED ACCESS SERVICES TARIFF

SECTION 5 – SWITCHED ACCESS RATES, (Cont'd.)

5.4 Rates and Charges, (Cont'd.)

5.4.3 CenturyLink (formerly Embarq) Territory

(M)

C. Kansas (N), Minnesota, Missouri (N), Nebraska (N), Texas (N), Wyoming (N)

Tandem-Switched Transport - Termination, per minute	\$0.000218
Tandem-Switched Transport - Facility, per minute per mile	\$0.000020
Access Tandem Switching, per minute	\$0.000331
CMUX, per minute	\$0.000218
CTP, per minute, all zones	\$0.000498
End Office Switching, per minute, all zones	\$0.003983

(M)

Certain material located on this page was previously located on pages 39 and 40.1.

Transmittal # 5

Issued: July 31, 2012

Effective: August 1, 2012

By: Jeffrey A. Hoffman, Chief Financial Officer
4001 Weston Parkway
Cary, NC 27513

INTERSTATE SWITCHED ACCESS SERVICES TARIFF

SECTION 5 – SWITCHED ACCESS RATES, (Cont'd.)

5.4 Rates and Charges, (Cont'd.)

5.4.3 CenturyLink (formerly Embarq) Territory

(N)

D. South Carolina, Tennessee, Virginia

Tandem-Switched Transport - Termination, per minute	
Zone 1	\$0.000252
Zone 2	\$0.000263
Zone 3	\$0.000290
Tandem-Switched Transport - Facility, per minute per mile	
Zone 1	\$0.000030
Zone 2	\$0.000031
Zone 3	\$0.000038
Access Tandem Switching, per minute	
Zone 1	\$0.000879
Zone 2	\$0.000949
Zone 3	\$0.001085
CMUX, per minute	
Zone 1	\$0.000254
Zone 2	\$0.000277
Zone 3	\$0.000296
CTP, per minute, all zones	\$0.000537
End Office Switching, per minute, all zones	\$0.003709

(N)

E. North Carolina, all zones

(M)

Tandem-Switched Transport - Termination, per minute	\$0.000226
Tandem-Switched Transport - Facility, per minute per mile	\$0.000026
Access Tandem Switching, per minute	\$0.000639
CMUX, per minute	\$0.000755
CTP, per minute	\$0.000386
End Office Switching, per minute	\$0.003735

(M)

Certain material located on this page was previously located on pages 40 and 40.2.

Transmittal # 5

Issued: July 31, 2012

Effective: August 1, 2012

By: Jeffrey A. Hoffman, Chief Financial Officer
4001 Weston Parkway
Cary, NC 27513

INTERSTATE SWITCHED ACCESS SERVICES TARIFF

SECTION 5 – SWITCHED ACCESS RATES, (Cont'd.)

5.4 Rates and Charges, (Cont'd.)

5.4.3 CenturyLink (formerly Embarq) Territory, (Cont'd.)

F. Washington, Oregon

(N)

Tandem-Switched Transport - Termination, per minute	
Zone 1	\$0.000225
Zone 2	\$0.000255
Tandem-Switched Transport - Facility, per minute per mile	
Zone 1	\$0.000025
Zone 2	\$0.000035
Access Tandem Switching, per minute	
Zone 1	\$0.000150
Zone 2	\$0.000160
CMUX, per minute	
Zone 1	\$0.000225
Zone 2	\$0.000240
CTP, per minute, all zones	\$0.000428
End Office Switching, per minute, all zones	\$0.003770

G. Ohio, all zones

Tandem-Switched Transport - Termination, per minute	\$0.000412
Tandem-Switched Transport - Facility, per minute per mile	\$0.000035
Access Tandem Switching, per minute	\$0.000124
CMUX, per minute	\$0.000405
CTP, per minute	\$0.000405
End Office Switching, per minute	\$0.003644

H. Pennsylvania, New Jersey, all zones

Tandem-Switched Transport - Termination, per minute	\$0.000449
Tandem-Switched Transport - Facility, per minute per mile	\$0.000022
Access Tandem Switching, per minute	\$0.001438
CMUX, per minute	\$0.000469
CTP, per minute	\$0.000490
End Office Switching, per minute	\$0.003892

(N)

Transmittal #5

Issued: July 31, 2012

Effective: August 1, 2012

By: Jeffrey A. Hoffman, Chief Financial Officer
4001 Weston Parkway
Cary, NC 27513

 INTERSTATE SWITCHED ACCESS SERVICES TARIFF

SECTION 5 – SWITCHED ACCESS RATES, (Cont'd.)

5.4 Rates and Charges, (Cont'd.)

5.4.3 CenturyLink (formerly Embarq) Territory, (Cont'd.)

I. Nevada

Tandem-Switched Transport - Termination, per minute	
Zone 1	\$0.000324
Zone 2	\$0.000333
Zone 3	\$0.000369
Tandem-Switched Transport - Facility, per minute per mile	
Zone 1	\$0.000015
Zone 2	\$0.000017
Zone 3	\$0.000019
Access Tandem Switching, per minute	
Zone 1	\$0.002052
Zone 2	\$0.002106
Zone 3	\$0.002260
CMUX, per minute	
Zone 1	\$0.000092
Zone 2	\$0.000096
Zone 3	\$0.000103
CTP, per minute	\$0.000363
End Office Switching, per minute	\$0.004130

(N)

(N)

Transmittal #5

Issued: July 31, 2012

Effective: August 1, 2012

By: Jeffrey A. Hoffman, Chief Financial Officer
 4001 Weston Parkway
 Cary, NC 27513

INTERSTATE SWITCHED ACCESS SERVICES TARIFF

SECTION 5 – SWITCHED ACCESS RATES, (Cont'd.)

5.4 Rates and Charges, (Cont'd.)

5.4.4 Verizon Territory

A.	District of Columbia, Delaware, Maryland, Massachusetts, New York/Connecticut, New Jersey, Pennsylvania, Rhode Island and Virginia		(M)
	Tandem-Switched Transport - Termination, per minute	\$0.000000	
	Tandem-Switched Transport - Facility, per minute per mile	\$0.000002	
	Access Tandem Switching, per minute	\$0.001574	
	CMUX, per minute	\$0.000000	
	CTP, per minute	\$0.001688	
	End Office Switching, per minute	\$0.002406	
B.	California, all zones		
	Tandem-Switched Transport - Termination, per minute per termination	\$0.0000000	
	Tandem-Switched Transport - Facility, per minute per mile	\$0.0000020	
	Access Tandem Switching, per minute	\$0.0015740	
	CMUX, per minute	\$0.0000000	
	CTP, per minute	\$0.0016920	
	End Office Switching, per minute	\$0.0019019	(M)
C.	Florida, all zones		(N)
	Tandem-Switched Transport - Termination, per minute per termination	\$0.0000000	
	Tandem-Switched Transport - Facility, per minute per mile	\$0.0000020	
	Access Tandem Switching, per minute	\$0.0015740	
	CMUX, per minute	\$0.0000000	
	CTP, per minute	\$0.0016920	
	End Office Switching, per minute	\$0.0020995	(N)

Certain material located on this page was previously located on pages 39, 40, 40.1 and 40.2.

Transmittal #5

Issued: July 31, 2012

Effective: August 1, 2012

By: Jeffrey A. Hoffman, Chief Financial Officer
4001 Weston Parkway
Cary, NC 27513

INTERSTATE SWITCHED ACCESS SERVICES TARIFF

SECTION 5 – SWITCHED ACCESS RATES, (Cont'd.)

5.4 Rates and Charges, (Cont'd.)

5.4.4 Verizon Territory, (Cont'd.)

D. Texas, all zones

Tandem-Switched Transport - Termination, per minute per termination	\$0.0000000
Tandem-Switched Transport - Facility, per minute per mile	\$0.0000020
Access Tandem Switching, per minute	\$0.0015740
CMUX, per minute	\$0.0000000
CTP, per minute	\$0.0016920
End Office Switching, per minute	\$0.0024060

(M)

(M)

Certain material located on this page was previously located on pages 40 and 40.2.

Transmittal #5

Issued: July 31, 2012

Effective: August 1, 2012

By: Jeffrey A. Hoffman, Chief Financial Officer
4001 Weston Parkway
Cary, NC 27513

 INTERSTATE SWITCHED ACCESS SERVICES TARIFF

SECTION 5 – SWITCHED ACCESS RATES, (Cont'd.)

5.4 Rates and Charges, (Cont'd.)

5.4.5 Frontier Territory (Formerly Verizon)

A. California West Coast

Tandem-Switched Transport - Termination, per minute per termination	\$0.0000000
Tandem-Switched Transport - Facility, per minute per mile	\$0.0000020
Access Tandem Switching, per minute	\$0.0021296
CMUX, per minute	\$0.0000000
CTP, per minute	\$0.0007207
End Office Switching, per minute	\$0.0019019

B. Idaho

Tandem-Switched Transport - Termination, per minute per termination	\$0.0000000
Tandem-Switched Transport - Facility, per minute per mile	\$0.0000020
Access Tandem Switching, per minute	\$0.0024000
CMUX, per minute	\$0.0000000
CTP, per minute	\$0.0006407
End Office Switching, per minute	\$0.0013794

C. Illinois, all zones

Tandem-Switched Transport - Termination, per minute per termination	\$0.0000000
Tandem-Switched Transport - Facility, per minute per mile	\$0.0000020
Access Tandem Switching, per minute	\$0.0018445
CMUX, per minute	\$0.0000000
CTP, per minute	\$0.0006571
End Office Switching, per minute	\$0.0019653

(N)

(N)

Transmittal #5

Issued: July 31, 2012

Effective: August 1, 2012

By: Jeffrey A. Hoffman, Chief Financial Officer
4001 Weston Parkway
Cary, NC 27513

 INTERSTATE SWITCHED ACCESS SERVICES TARIFF

SECTION 5 – SWITCHED ACCESS RATES, (Cont'd.)

5.4 Rates and Charges, (Cont'd.)

5.4.5 Frontier Territory (Formerly Verizon), (Cont'd.)

D. Indiana

Tandem-Switched Transport - Termination, per minute per termination	\$0.0000000
Tandem-Switched Transport - Facility, per minute per mile	\$0.0000020
Access Tandem Switching, per minute	\$0.0024000
CMUX, per minute	\$0.0000000
CTP, per minute	\$0.0007198
End Office Switching, per minute	\$0.0020889

E. Michigan

Tandem-Switched Transport - Termination, per minute per termination	\$0.0000000
Tandem-Switched Transport - Facility, per minute per mile	\$0.0000020
Access Tandem Switching, per minute	\$0.0030000
CMUX, per minute	\$0.0000000
CTP, per minute	\$0.0005292
End Office Switching, per minute	\$0.0014123

F. North Carolina, all zones

Tandem-Switched Transport - Termination, per minute per termination	\$0.0000000
Tandem-Switched Transport - Facility, per minute per mile	\$0.0000020
Access Tandem Switching, per minute	\$0.0016490
CMUX, per minute	\$0.0000000
CTP, per minute	\$0.0006170
End Office Switching, per minute	\$0.0019548

(N)

(N)

Transmittal #5

Issued: July 31, 2012

Effective: August 1, 2012

By: Jeffrey A. Hoffman, Chief Financial Officer
4001 Weston Parkway
Cary, NC 27513

INTERSTATE SWITCHED ACCESS SERVICES TARIFF

SECTION 5 – SWITCHED ACCESS RATES, (Cont'd.)

5.4 Rates and Charges, (Cont'd.)

5.4.5 Frontier Territory (Formerly Verizon), (Cont'd.)

G. Ohio

(N)

Tandem-Switched Transport - Termination, per minute per termination	\$0.0000000
Tandem-Switched Transport - Facility, per minute per mile	\$0.0000020
Access Tandem Switching, per minute	\$0.0024000
CMUX, per minute	\$0.0000000
CTP, per minute	\$0.0015479
End Office Switching, per minute	\$0.0022077

H. Oregon, all zones

Tandem-Switched Transport - Termination, per minute per termination	\$0.0000000
Tandem-Switched Transport - Facility, per minute per mile	\$0.0000020
Access Tandem Switching, per minute	\$0.0043318
CMUX, per minute	\$0.0000000
CTP, per minute	\$0.0007144
End Office Switching, per minute	\$0.0022081

I. South Carolina

Tandem-Switched Transport - Termination, per minute per termination	\$0.0000000
Tandem-Switched Transport - Facility, per minute per mile	\$0.0000020
Access Tandem Switching, per minute	\$0.0024000
CMUX, per minute	\$0.0000000
CTP, per minute	\$0.0005352
End Office Switching, per minute	\$0.0020150

(N)

Transmittal #5

Issued: July 31, 2012

Effective: August 1, 2012

By: Jeffrey A. Hoffman, Chief Financial Officer
4001 Weston Parkway
Cary, NC 27513

INTERSTATE SWITCHED ACCESS SERVICES TARIFF

SECTION 5 – SWITCHED ACCESS RATES, (Cont'd.)

5.4 Rates and Charges, (Cont'd.)

5.4.5 Frontier Territory (Formerly Verizon), (Cont'd.)

J.	Washington, all zones		(N)
	Tandem-Switched Transport - Termination, per minute per termination	\$0.0000000	
	Tandem-Switched Transport - Facility, per minute per mile	\$0.0000020	
	Access Tandem Switching, per minute	\$0.0036642	
	CMUX, per minute	\$0.0000000	
	CTP, per minute	\$0.0003861	
	End Office Switching, per minute	\$0.0018654	
K.	Wisconsin		
	Tandem-Switched Transport - Termination, per minute per termination	\$0.0000000	
	Tandem-Switched Transport - Facility, per minute per mile	\$0.0000020	
	Access Tandem Switching, per minute	\$0.0024000	
	CMUX, per minute	\$0.0000000	
	CTP, per minute	\$0.0006610	
	End Office Switching, per minute	\$0.0025672	
			(N)
L.	West Virginia		(M)
	Tandem-Switched Transport - Termination, per minute	\$0.0000000	
	Tandem-Switched Transport - Facility, per minute per mile	\$0.0000020	
	Access Tandem Switching, per minute	\$0.0016840	
	CMUX, per minute	\$0.0000000	
	CTP, per minute	\$0.0015810	
	End Office Switching, per minute	\$0.0022730	
			(M)

Certain material located on this page was previously located on page 40.2.

Transmittal #5

Issued: July 31, 2012

Effective: August 1, 2012

By: Jeffrey A. Hoffman, Chief Financial Officer
4001 Weston Parkway
Cary, NC 27513

INTERSTATE SWITCHED ACCESS SERVICES TARIFF

SECTION 5 – SWITCHED ACCESS RATES, (Cont'd.)

5.4 Rates and Charges, (Cont'd.)

5.4.5 FairPoint Territory (Maine, New Hampshire, Vermont)*

Tandem-Switched Transport - Termination, per minute	\$0.000000
Tandem-Switched Transport - Facility, per minute per mile	\$0.000003
Access Tandem Switching, per minute	\$0.001600
CMUX, per minute	\$0.000000
CTP, per minute	\$0.001595

End Office Switching, per minute	\$0.002264
----------------------------------	------------

*Territory previously served by Verizon.

5.4.6 Hawaiian Telcom Territory – Hawaii

Tandem-Switched Transport - Termination, per minute	\$0.00013000
Tandem-Switched Transport - Facility, per minute per mile	\$0.00003000
Access Tandem Switching, per minute	\$0.00120000
CMUX, per minute	\$0.00003560
CTP, per minute	\$0.00080980

End Office Switching, per minute	\$0.00178350
----------------------------------	--------------

5.4.7 Frontier-Rochester Territory

Tandem-Switched Transport - Termination, per minute	\$0.00114997
Tandem-Switched Transport - Facility, per minute per mile	\$0.00004000
Access Tandem Switching, per minute	\$0.00010000
CMUX, per minute	\$0.00001000
CTP, per minute	\$0.00070000

End Office Switching, per minute	\$0.00295157
----------------------------------	--------------

Certain material located on this page was previously located on pages 39, 40 and 40.2.

Transmittal #5

Issued: July 31, 2012

Effective: August 1, 2012

By: Jeffrey A. Hoffman, Chief Financial Officer
4001 Weston Parkway
Cary, NC 27513

INTERSTATE SWITCHED ACCESS SERVICES TARIFF

SECTION 5 – SWITCHED ACCESS RATES, (Cont'd.)

5.4 Rates and Charges, (Cont'd.)

5.4.8 Cincinnati Bell Territory

Tandem-Switched Transport - Termination, per minute	\$0.00060000
Tandem-Switched Transport - Facility, per minute per mile	\$0.00011700
Access Tandem Switching, per minute	\$0.00200100
CMUX, per minute	\$0.00024000
CTP, per minute	\$0.00096800
End Office Switching, per minute	\$0.00386250

(M)

(M)

Certain material located on this page was previously located on page 40.

Transmittal #5

Issued: July 31, 2012

Effective: August 1, 2012

By: Jeffrey A. Hoffman, Chief Financial Officer
4001 Weston Parkway
Cary, NC 27513

INTERSTATE SWITCHED ACCESS SERVICES TARIFF

SECTION 5 – SWITCHED ACCESS RATES, (Cont'd.)

5.4 Rates and Charges, (Cont'd.)

5.4.3 Toll-Free 8YY Data Base Query

(T)

Rate per Query

\$0.0075

(I)(M)

Certain material located on this page was previously located on page 40.4.

Transmittal #5

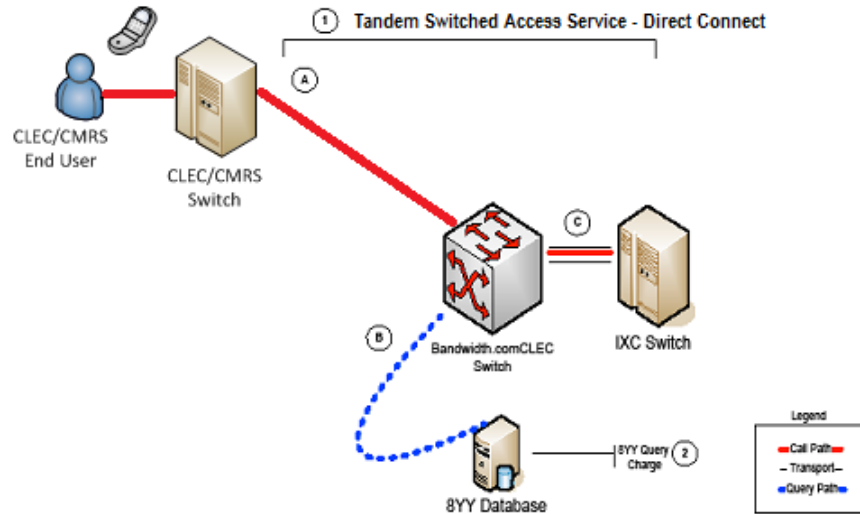
Issued: July 31, 2012

Effective: August 1, 2012

By: Jeffrey A. Hoffman, Chief Financial Officer
4001 Weston Parkway
Cary, NC 27513

INTERSTATE SWITCHED ACCESS SERVICES TARIFF**SECTION 5 – SWITCHED ACCESS RATES, (Cont'd.)****Tandem Switching Access Service – Direct Connection**

Section 5.2.1.A (Sections 5.2.4 and 5.2.5 also apply to Originating 8YY Calls)

**Originating Call Flow:**

- A. CLEC/CMRS End User places long distance call that is routed to Bandwidth.com CLEC switch.
- B. If 8YY call, Bandwidth.com CLEC looks up IXC that should receive the call in 8YY Database.
- C. Call is routed to IXC switch via dedicated transport.

Originating Charges:

Bandwidth.com CLEC charges IXC for:

- (1) Tandem Switching Access Service – Direct Connection, which is comprised of:
 - (a) Access Tandem switching;
 - (b) Tandem-Switched Transport Termination and Common Multiplexing;
 - (c) Tandem-Switched Transport - Facility;
 - (d) Dedicated Trunk Port (ICB)
- (2) 8YY Query Charge, as applicable.

Customer is responsible for providing or ordering dedicated facilities to Bandwidth.com CLEC's point of presence in the access tandem serving area.

Terminating Call Flow:

- C. IXC delivers terminating long distance call to Bandwidth.com CLEC switch via dedicated transport.
- A. Bandwidth.com CLEC switches and routes call to CLEC/CMRS End User.

Terminating Charges:

Bandwidth.com CLEC charges IXC for:

- (1) Tandem Switching Access Service – Direct Connection, which is comprised of:
 - (a) Access Tandem switching;
 - (b) Tandem-Switched Transport Termination and Common Multiplexing;
 - (c) Tandem-Switched Transport - Facility;
 - (d) Dedicated Trunk Port (ICB)

Customer is responsible for providing or ordering dedicated facilities to Bandwidth.com CLEC's point of presence in the access tandem serving area.

Transmittal # 5

Issued: July 31, 2012

Effective: August 1, 2012

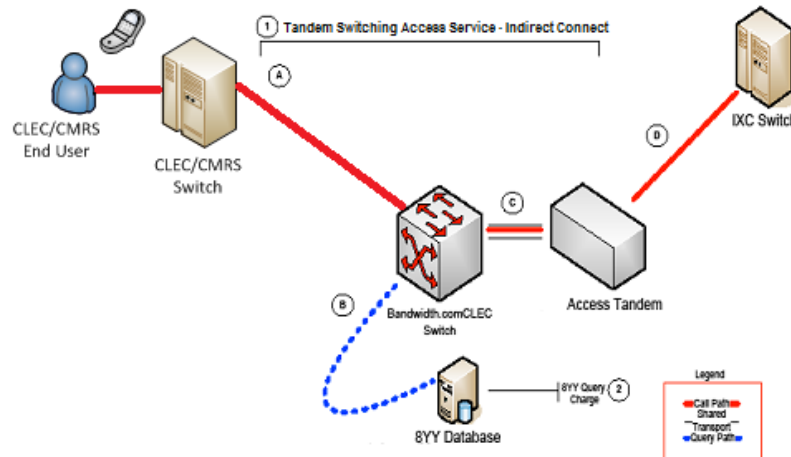
By: Jeffrey A. Hoffman, Chief Financial Officer
4001 Weston Parkway
Cary, NC 27513

INTERSTATE SWITCHED ACCESS SERVICES TARIFF

SECTION 5 – SWITCHED ACCESS RATES, (Cont'd.)

Tandem Switching Access Service – Indirect Connection

Section 5.2.1.B (Sections 5.2.4 and 5.2.5 also apply to Originating 8YY Calls)

**Originating Call Flow:**

- A. CLEC/CMRS End User places long distance call that is routed to Bandwidth.com CLEC switch.
- B. If 8YY call, Bandwidth.com CLEC looks up IXC that should receive the call in 8YY Database.
- C. Call is routed from Bandwidth.com CLEC switch to Third-Party Access Tandem over shared transport.
- D. Third-Party Access Tandem provider routes call to IXC.

Originating Charges:

Bandwidth.com CLEC charges IXC for:

- (1) Tandem Switching Access Service – Indirect Connection, which is comprised of:
 - (a) Access Tandem switching;
 - (b) Tandem-Switched Transport Termination and Common Multiplexing;
 - (c) Tandem-Switched Transport – Facility.
- (2) 8YY Query Charge, as applicable.

Additional charges may be assessed by the third-party access tandem provider.

Terminating Call Flow:

- D. IXC delivers terminating long distance call to Third-Party Access Tandem.
- C. Third-Party Access Tandem provider routes call over shared transport to Bandwidth.com CLEC switch.
- A. Call is routed from Bandwidth.com CLEC switch to CLEC/CMRS End User.

Terminating Charges:

Bandwidth.com CLEC charges IXC for:

- (1) Tandem Switching Access Service – Indirect Connection, which is comprised of:
 - (a) Access Tandem switching;
 - (b) Tandem-Switched Transport Termination and Common Multiplexing;
 - (c) Tandem-Switched Transport – Facility.

Additional charges may be assessed by the third-party access tandem provider

Transmittal # 5

Issued: July 31, 2012

Effective: August 1, 2012

By: Jeffrey A. Hoffman, Chief Financial Officer
4001 Weston Parkway
Cary, NC 27513

(N)

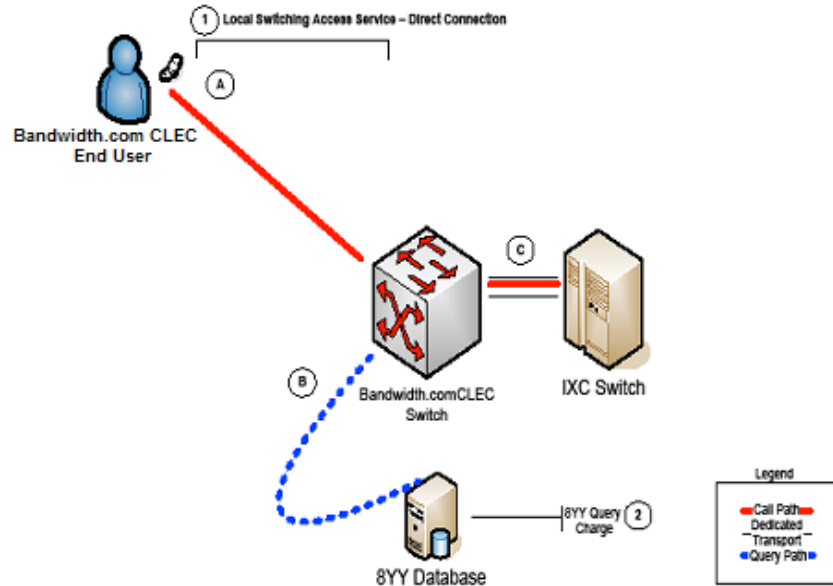
(N)

INTERSTATE SWITCHED ACCESS SERVICES TARIFF

SECTION 5 – SWITCHED ACCESS RATES, (Cont'd.)

Local Switching Access Service – Direct Connection (Example 1)

Section 5.2.2 (Sections 5.2.4 and 5.2.5 also apply to Originating 8YY Calls)

**Originating Call Flow:**

- A. Bandwidth.com CLEC's End User places a long distance call that is routed to Bandwidth.com CLEC switch.
- B. If 8YY call, Bandwidth.com CLEC looks up IXC that should receive the call in 8YY Database.
- C. Call is routed from Bandwidth.com CLEC switch to IXC switch via dedicated transport.

Originating Charges:

Bandwidth.com CLEC charges IXC for:

- (1) Local Switching Access Service – Direct Connection, which is comprised of:
 - (a) End Office switching;
 - (b) Dedicated Trunk Port (ICB).
- (2) 8YY Query Charge, as applicable.

Customer is responsible for providing or ordering dedicated facilities to Bandwidth.com CLEC's point of presence in the access tandem serving area.

Terminating Call Flow:

- C. IXC delivers terminating long distance call to Bandwidth.com CLEC switch via dedicated transport.
- A. Call is routed from Bandwidth.com CLEC switch to Bandwidth.com CLEC's End User.

Terminating Charges:

Bandwidth.com CLEC charges IXC for:

- (1) Local Switching Access Service – Direct Connection, which is comprised of:
 - (a) End Office switching;
 - (b) Dedicated Trunk Port (ICB).

Customer is responsible for providing or ordering dedicated facilities to Bandwidth.com CLEC's point of presence in the access tandem serving area.

Transmittal # 5

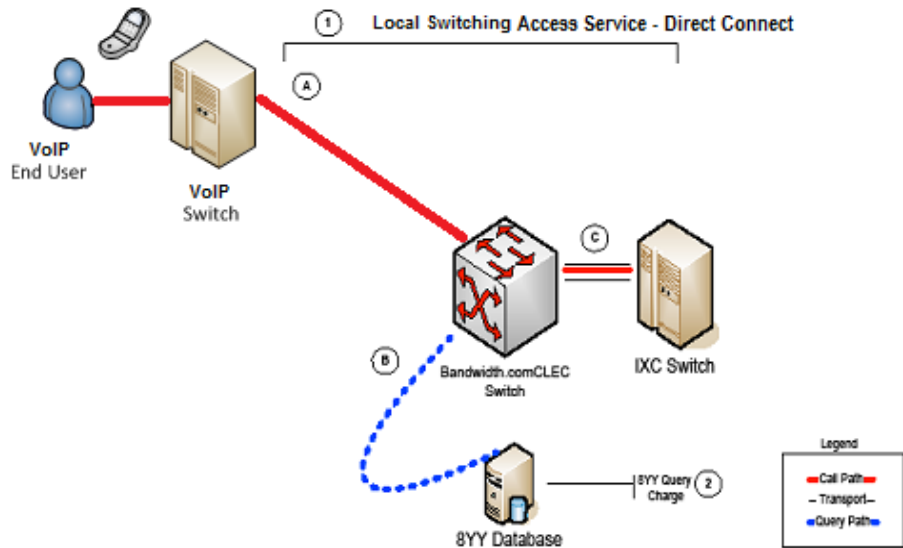
Issued: July 31, 2012

Effective: August 1, 2012

By: Jeffrey A. Hoffman, Chief Financial Officer
4001 Weston Parkway
Cary, NC 27513

INTERSTATE SWITCHED ACCESS SERVICES TARIFF

SECTION 5 – SWITCHED ACCESS RATES, (Cont'd.)
Local Switching Access Service – Direct Connection (Example 2)
 Section 5.2.2 (Sections 5.2.4 and 5.2.5 also apply to Originating 8YY Calls)

**Originating Call Flow:**

- A. VoIP End User places a long distance call that is routed to Bandwidth.com CLEC switch.
 B. If 8YY call, Bandwidth.com CLEC looks up IXC that should receive the call in 8YY Database.
 C. Call is routed from Bandwidth.com CLEC switch to IXC switch via dedicated transport.

Originating Charges:

Bandwidth.com CLEC charges IXC for:

- (1) Local Switching Access Service – Direct Connection, which is comprised of:
 (a) End Office switching;
 (b) Dedicated Trunk Port (ICB).
 (2) 8YY Query Charge, as applicable.

Customer is responsible for providing or ordering dedicated facilities to Bandwidth.com CLEC's point of presence in the access tandem serving area.

Terminating Call Flow:

- C. IXC delivers terminating long distance call to Bandwidth.com CLEC switch via dedicated transport.
 A. Call is routed from Bandwidth.com CLEC switch to VoIP End User.

Terminating Charges:

Bandwidth.com CLEC charges IXC for:

- (1) Local Switching Access Service – Direct Connection, which is comprised of:
 (a) End Office switching;
 (b) Dedicated Trunk Port (ICB).

Customer is responsible for providing or ordering dedicated facilities to Bandwidth.com CLEC's point of presence in the access tandem serving area

Transmittal # 5

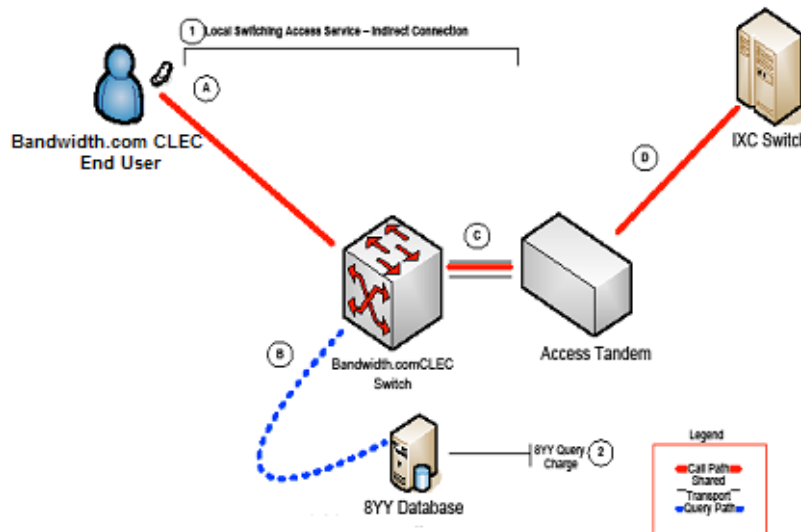
Issued: July 31, 2012

Effective: August 1, 2012

By: Jeffrey A. Hoffman, Chief Financial Officer
 4001 Weston Parkway
 Cary, NC 27513

INTERSTATE SWITCHED ACCESS SERVICES TARIFF

SECTION 5 – SWITCHED ACCESS RATES, (Cont'd.)
Local Switching Access Service – Indirect Connection (Example 1)
 Section 5.2.3 (Sections 5.2.4 and 5.2.5 also apply to Originating 8YY Calls)

**Originating Call Flow:**

- Bandwidth.com CLEC End User places a long distance call that is routed to Bandwidth.com CLEC switch.
- If 8YY call, Bandwidth.com CLEC looks up IXC that should receive the call in 8YY Database.
- Call is routed from Bandwidth.com CLEC switch to Third-Party Access Tandem over shared transport.
- Third-Party Access Tandem provider routes call to IXC.

Originating Charges:

Bandwidth.com CLEC charges IXC for:

- Local Switching Access Service – Indirect Connection, which is comprised of:
 - End Office Switching;
 - Common Trunk Port;
 - Tandem-Switched Transport Termination and Common Multiplexing;
 - Tandem-Switched Transport - Facility.
- 8YY Query Charge, as applicable.

Additional charges may be assessed by the third-party access tandem provider.

Terminating Call Flow:

- IXC delivers terminating long distance call to Third-Party Access Tandem.
- Third-Party Access Tandem provider routes call over shared transport to Bandwidth.com CLEC switch.
- Call is routed from Bandwidth.com CLEC switch to Bandwidth.com CLEC End User.

Terminating Charges:

CLEC charges IXC for:

- Local Switching Access Service – Indirect Connection, which is comprised of:
 - End Office Switching;
 - Common Trunk Port;
 - Tandem-Switched Transport Termination and Common Multiplexing;
 - Tandem-Switched Transport - Facility

Additional charges may be assessed by the third-party access tandem provider.

Transmittal # 5

Issued: July 31, 2012

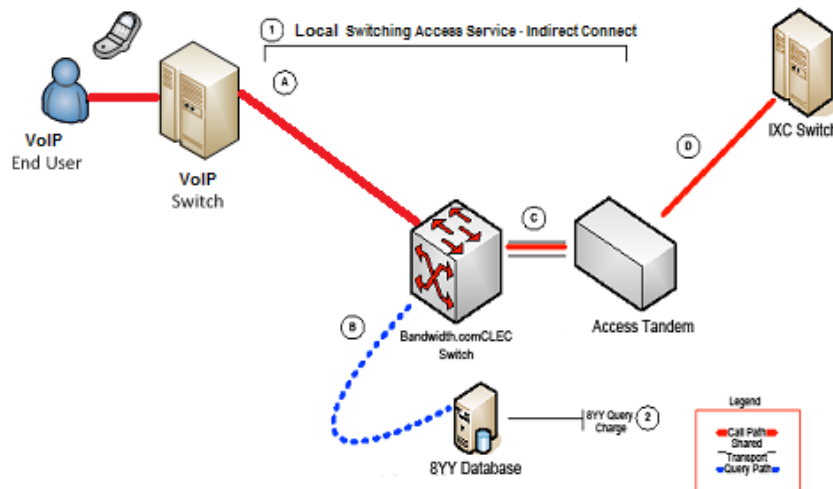
Effective: August 1, 2012

By: Jeffrey A. Hoffman, Chief Financial Officer
 4001 Weston Parkway
 Cary, NC 27513

INTERSTATE SWITCHED ACCESS SERVICES TARIFF

SECTION 5 – SWITCHED ACCESS RATES, (Cont'd.)
Local Switching Access Service – Indirect Connection (Example 2)

Section 5.2.3 (Sections 5.2.4 and 5.2.5 also apply to Originating 8YY Calls)

**Originating Call Flow:**

- A. VoIP End User places a long distance call that is routed to Bandwidth.com CLEC switch.
- B. If 8YY call, Bandwidth.com CLEC looks up IXC that should receive the call in 8YY Database.
- C. Call is routed from Bandwidth.com CLEC switch to Third-Party Access Tandem over shared transport.
- D. Third-Party Access Tandem provider routes call to IXC.

Originating Charges:

Bandwidth.com CLEC charges IXC for:

- (1) Local Switching Access Service – Indirect Connection, which is comprised of:
 - (a) End Office Switching;
 - (b) Common Trunk Port;
 - (c) Tandem-Switched Transport Termination and Common Multiplexing;
 - (d) Tandem-Switched Transport - Facility.
- (2) 8YY Query Charge, as applicable.

Additional charges may be assessed by the third-party access tandem provider.

Terminating Call Flow:

- D. IXC delivers terminating long distance call to Third-Party Access Tandem.
- C. Third-Party Access Tandem provider routes call over shared transport to Bandwidth.com CLEC switch.
- A. Call is routed from Bandwidth.com CLEC switch to VoIP End User.

Terminating Charges:

CLEC charges IXC for:

- (1) Local Switching Access Service – Indirect Connection, which is comprised of:
 - (a) End Office Switching;
 - (b) Common Trunk Port;
 - (c) Tandem-Switched Transport Termination and Common Multiplexing;
 - (d) Tandem-Switched Transport - Facility

Additional charges may be assessed by the third-party access tandem provider

Transmittal # 5

Issued: July 31, 2012

Effective: August 1, 2012

By: Jeffrey A. Hoffman, Chief Financial Officer
4001 Weston Parkway
Cary, NC 27513