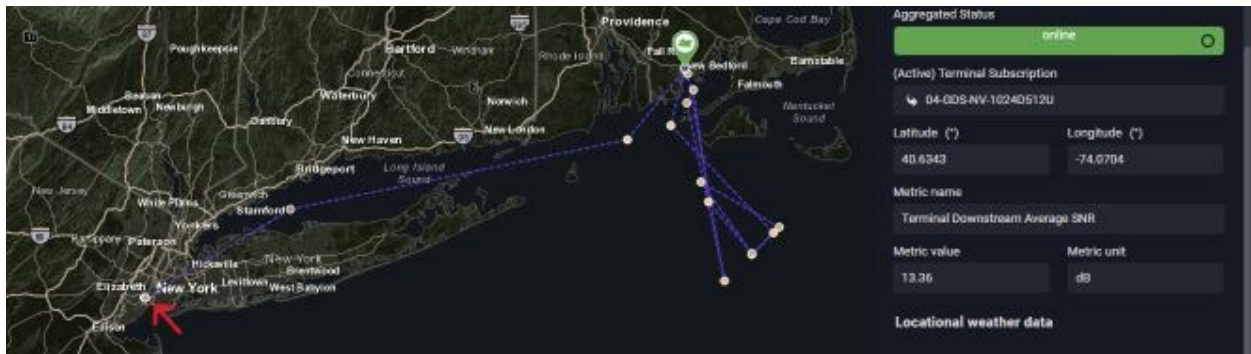


Eutelsat OneWeb’s Response to OET Correspondence Reference No. 82165

OET 1: Please enter center geographical coordinate of operation, State, and city as well.

This information has been added. Additionally, please find below screencaps of the intended path for the vessel. As previously submitted in the narrative, the second antenna will be tested aboard a maritime vessel departing Staten Island, NY voyaging to Providence, RI, and then up to 300 miles off the coastline between the two.



OET 2: Also, please add another 14 days to your start date. Dec 13, 2023 is not enough time for agencies to review your application.

The start date has been amended as requested.