

## Exhibit B - Deployment Parameters

- Company Name: PNC Inc. dba Valley Internet
- FRN # 0018500694
- Form 442 file: **1840-EX-CN-2023**; confirmation **EL949995**
- Month, Year: Submitted December 7, 2023

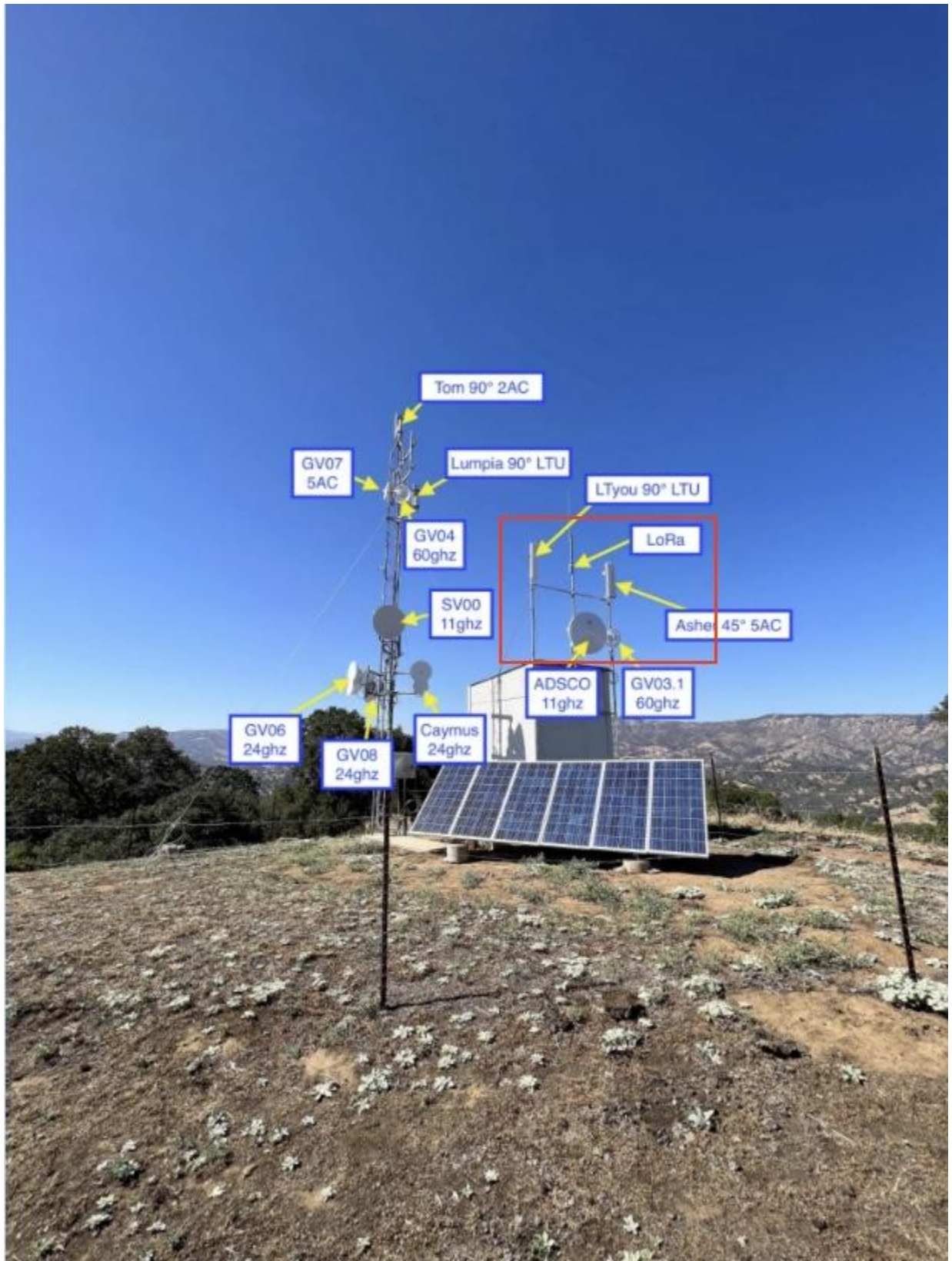
The current stage of the experimental trial proposes operation from two (2) sites. Each location will deploy directional antennas which will transmit on the 5925–7125 MHz band. Radio will be locked to operate only in UNII-5 (5.925–6.425 GHz) and UNII-7 (6.525–6.875 GHz). Specific parameters of the proposed operation are detailed below:

### **Site 1**

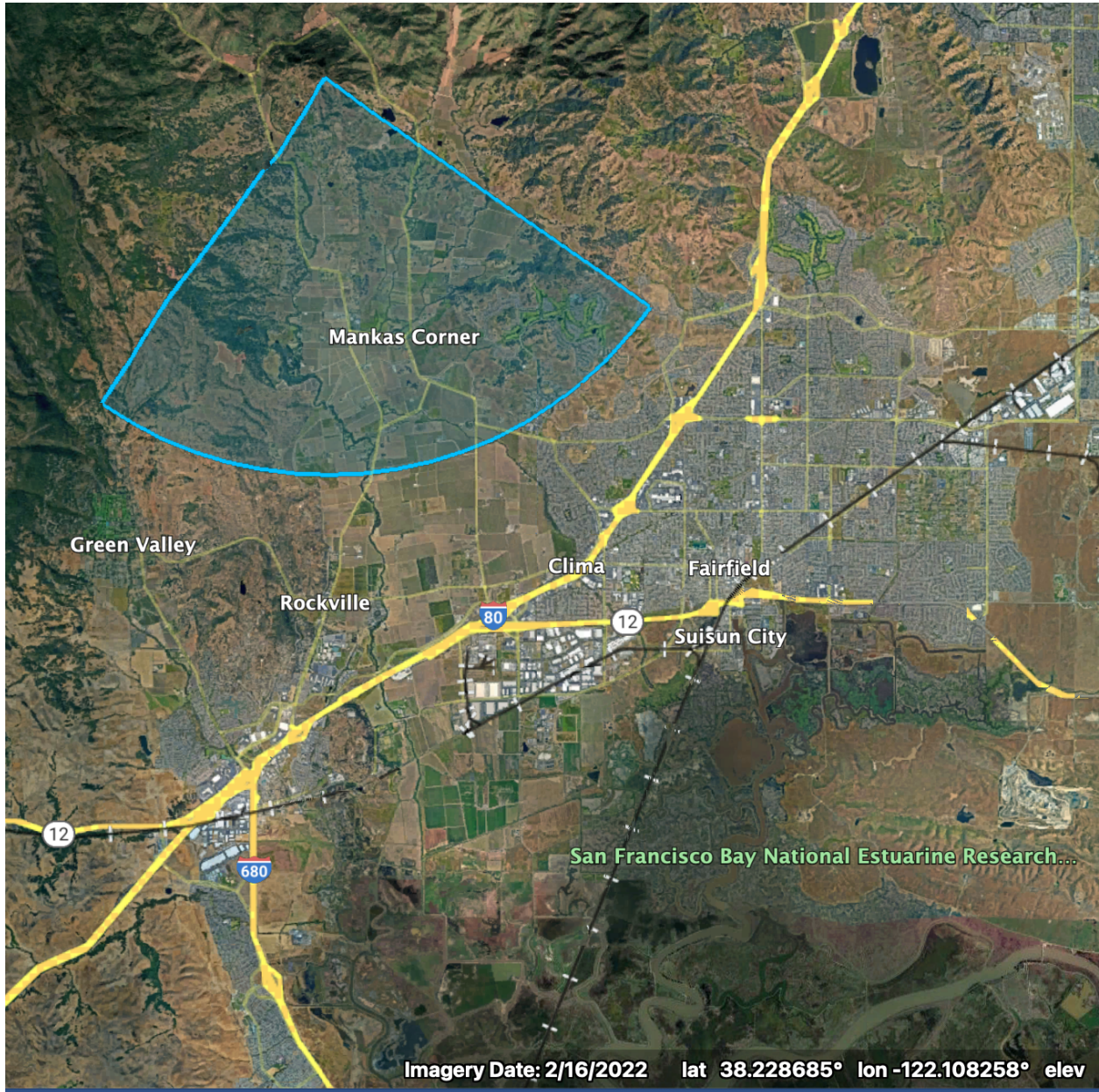
- Location address: Okell Hill, Napa, California 94558
- Coordinates GPS coordinates of the tower: 38.326780,-122.122443
- Beamwidth in degrees at half point: 90
- Beam tilt installed antenna tilt: 1.5
- Orientation details (in horizontal plane center of each antenna in degrees): South to South East (170 degrees)
- Overall height above ground: 4 meters
- Elevation of ground at the antenna site: 1000
- Distance to nearest aircraft landing:
  1. 9.3 miles = Nut Tree Airport, 301 County Airport Rd, Vacaville, CA 95688 (38.375354, -121.959572)
  2. 9.8 miles = Capell Valley Airport, Napa, CA 94558 (38.461947,-122.194562)
  3. 10.4 miles = Travis AF Base, Fairfield, Ca (38.262542,-121.945964)
- List of any natural information or existing man-made structures (hills, towers, water tanks, etc.) Mounted on Network Shed

Additional information required:

- Frequency range: 5925–7125 MHz
- Station class: FX
- Maximum EIRP: 4.0W
- Mean peak: P
- Frequency tolerance: 960 Hz
- Emission designator:  
80 MHz BW: 80M0D7D  
160 MHz BW: 160M0D7D
- Modulating signal: OFDM







## **Site 2**

- Location address: 1700 Twin Sisters Rd, Fairfield California 95534
- Coordinates GPS coordinates of the tower: 38.303462, -122.168478
- Beamwidth in degrees at half point: 90
- Beam tilt installed antenna tilt: -2.5 to 4
- Orientation details (in horizontal plane center of each antenna in degrees: East to South East (114 degrees)
- Overall height above ground: 4 meters
- Elevation of ground at the antenna site: 2000

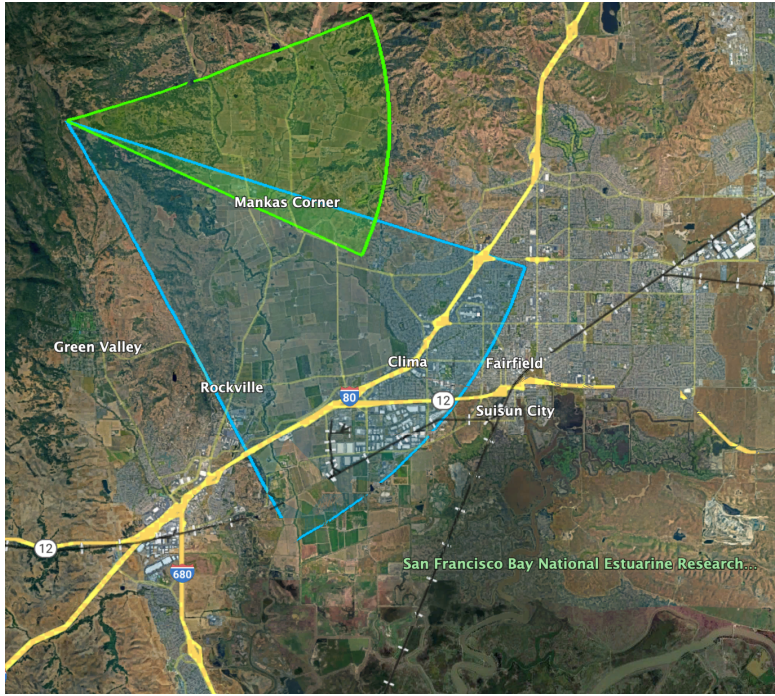
- Distance to nearest aircraft landing: 8.34 miles = Napa County Airport, Napa, CA 94558 (38.219363,-122.274314)
- List of any natural information or existing man-made structures (hills, towers, water tanks, etc.)  
25ft tower

Additional information required:

- Frequency range: 5925–7125 MHz
- Station class: FX
- Maximum EIRP: 4.0W
- Mean peak: P
- Frequency tolerance: 960 Hz
- Emission designator:  
80 MHz BW: 80M0D7D  
160 MHz BW: 160M0D7D
- Modulating signal: OFDM







**End Users**

Additionally, the trial will deploy up to 50 end users located within a 7 mile radius of the fixed locations, with a maximum EIRP 4.0W.

Sites 1 & 2 combined to show coverage area:-

