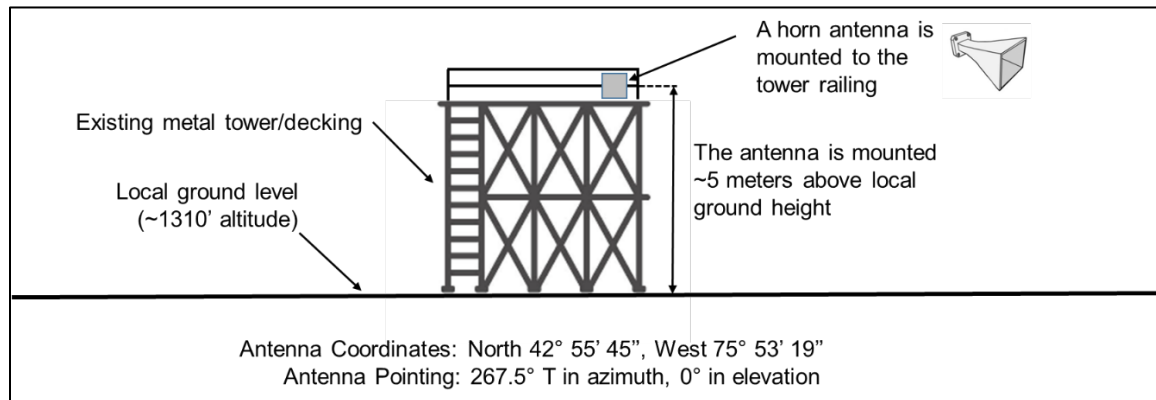


Exhibit Type: Antenna Drawing

Description: Vertical profile sketch of total structure including supporting building. The transmitting antenna is mounted on a small, existing metal tower with decking. The antenna type used is a standard horn antenna, mounted to the tower railing. The antenna pointing is fixed at 267.5° T in azimuth and 0° in elevation. The small site has been cleared of trees to provide good line of sight back to the intended receiver. Otherwise, the area is heavily forested in all directions.



*Figure 1: Vertical profile sketch of antenna mounted to existing small tower.*