

Location:

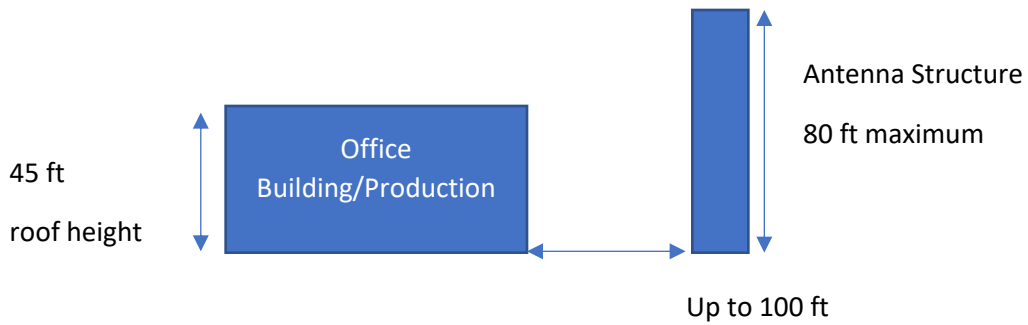
5900 Wireless St
Sioux Falls, SD 57107

GPS Location: 43.60766337338428, -96.79804377308314

Building height: 45 ft

Radar/Antenna location: Antenna will be elevated on a tower above the height of the building to a total elevation of between 25 and 80 feet above ground level.

Safety distance for the highest power radar and widest beamwidth is a minimum of 13.43 ft above level of personnel. In our system the radar will not be operated lower than 25 ft above the max height of personnel.



Position of tower when mounting radar will always maintaining safety limits

Closest distance to airport: 2.5 miles

Note: Google earth image has not updated since the building has started construction.

