

Directional Antenna for SkyLink GRS

The antenna has a horizontal -3dB beamwidth of 111 degrees. Optimal antenna coverage is obtained by mounting it with a 6-degree upward bias.

Orientation in the horizontal plane of the directional antenna is steerable and will depend on the particular mission profile of the UAS for the given flight envelope.

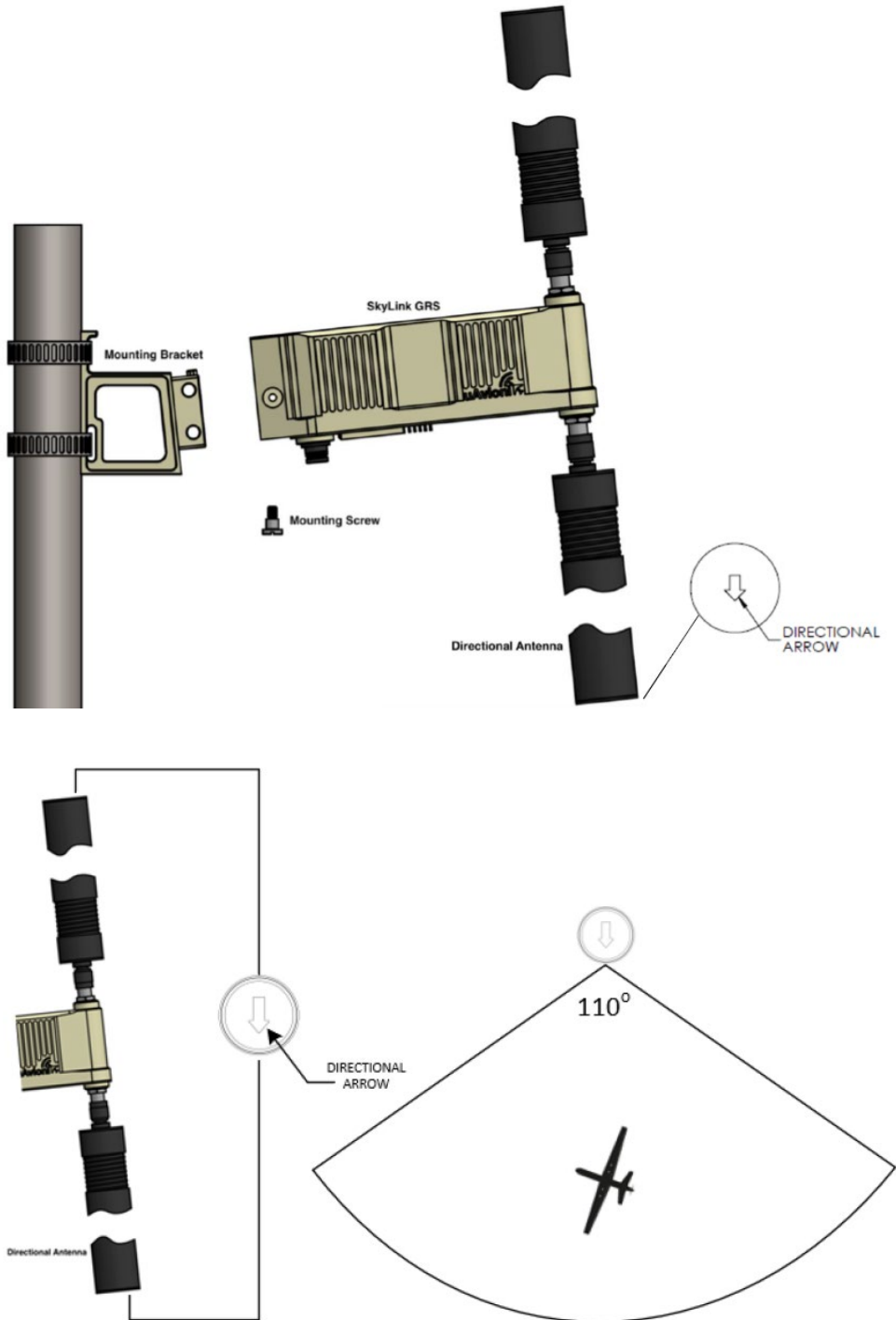


Figure 3 Directional Antenna Orientation