

FCC SPECIFIC ACTION ITEMS

With respect to CBRN frequencies 3550-3700 MHz, please address the following items:

1. Explanation of how it would coordinate any usage with a Spectrum Access System (SAS).
 2. Explanation of how it would specifically avoid causing interference to incumbent and commercial operations in the band, including General Authorized Access (GAA).
 3. With respect to operations in 3700-3900 MHz band, WTB requests additional information on how the you will avoid causing harmful interference to incumbent operators, including FSS earth stations, in this band.
- A list of registered incumbent? Fixed Service Satellites (FSS) earth stations in the band can be found at the following link: <https://docs.fcc.gov/public/attachments/DA-20-823A2.xls>

FCC AI#1- USE OF SAS

With respect to CBRS frequencies 3550-3700 MHz, please address the following items:

1. Explanation of how it would coordinate any usage with a Spectrum Access System (SAS).
- **LM Response:** Due to the classified nature of some of the parameters of the SSRIS, LM cannot provide details in an unclassified setting. However, LM does not expect to require the use of SAS in regards to potential impacts to 5G systems operating in the CBRS band.

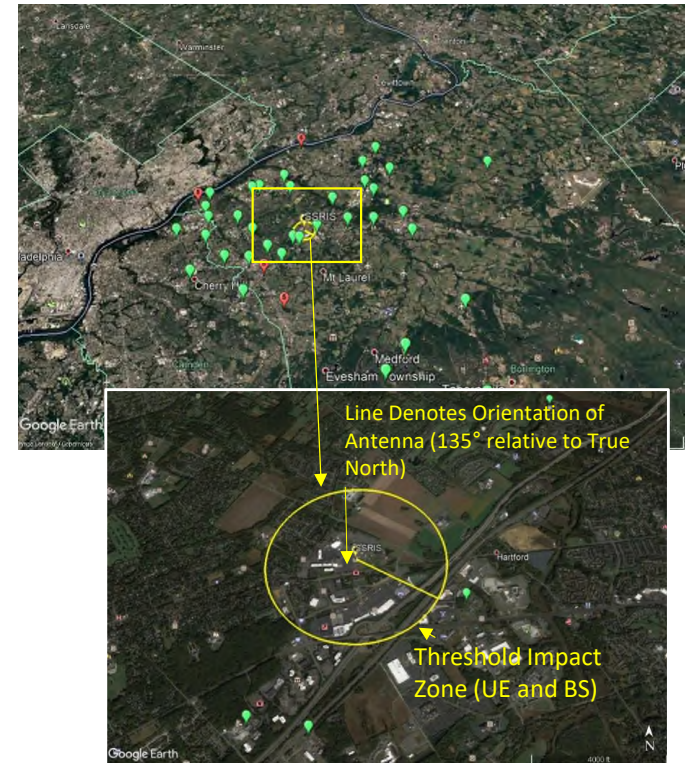
FCC AI#2- EMI MITIGATION

With respect to CBRS frequencies 3550-3700 MHz, please address the following items:

2. Explanation of how it would specifically avoid causing interference to incumbent and commercial operations in the band, including General Authorized Access (GAA).

- **LM Response:**

- The 5G 3GPP specifications that were evaluated for this EMI analysis were:
 - BS- blocking
 - UE- maximum power input and blocking
- A preliminary threshold impact zone (Yellow circle to the right) has been determined to avoid impacts to 5G CBRS devices.
- While there is limited information that 5G midband frequencies will be deployed in the area around SSRIS, the analysis assumed they will be.
- Green Pins are existing towers. Red pins appear to be future 5G sites.
- Locations acquired from (www.cellreception.com/towers & 5G www.speedtest.net/ookla-5g-map)



FCC AI#3- FSS EMI IMPACTS

- 3. With respect to operations in 3700-3900 MHz band, WTB requests additional information on how the you will avoid causing harmful interference to incumbent operators, including FSS earth stations, in this band.
- LM Response:**
 - Due to the classified nature of some of the parameters of the SSRIS, LM cannot provide details in an unclassified setting. LM concluded that EMI from SSRIS as a source and FSS as a potential victim to be a non-issue.

List of Incumbent Earth Stations - CONUS (sorted by State, then Zip Code)																
ApplicantName	CallSig	FileNumber	Filing State	Red Lig	AppTy	Accepted For Filing PN	Class Of Earth Station	SiteID	AntennalD	Quant	SiteStreet1	SiteStreet2	SiteCity	SiteCounty	Site Sta. T	Site Zip
Sound Ideas Media, LLC	E190599	SESREG2018091004268	current		REG		FES	1	1	1	1316 7th Avenue		Beaver Falls	Beaver	PA	15010
BLUE DEVIL CABLE TELEVISION INC.	E181575	SESREG201807170458	current		REG		FES	1	G-17	1	55 Keys Road		Burgeltstown	Washington	PA	15021
BLUE DEVIL CABLE TELEVISION INC.	E181575	SESREG201807170458	current		REG		FES	1	Patn 3.8	3	55 Keys Road		Burgeltstown	Washington	PA	15021
Corporation of the Presiding Bishop of The Church	E190503	SESREG2018091804186	pending		REG	7/29/2020	FES	25 PLEASANT HILLS	Standard	1	210 Old Clairton Road		CLAIRTON		PA	15025
Corporation of the Presiding Bishop of The Church	E190503	SESREG2018091804186	pending		REG	7/29/2020	FES	16 BEAVER VALLEY	Standard	1	114 Church Drive		MONACA		PA	15061
Corporation of the Presiding Bishop of The Church	E190503	SESREG2018091804186	pending		REG	7/29/2020	FES	28 MONONGAHELA	Standard	1	136 Sacred Heart Road		MONONGAHELA		PA	15063
PSSI Global Services LLC	E060256	SESLIC2006062901087	current		LIC		FES	1	RSI-11.3M	1	201 Browntown Road		New Kensington	Allegheny	PA	15068
PSSI Global Services LLC	E080014	SESLIC2008011500053	current		LIC		FES	1	SA 9.1/1	1	201 Browntown Road		New Kensington	Allegheny	PA	15068
PSSI Global Services LLC	E880053	SESRWL2007092701331	current		RWL		FES	1	7.0 M	1	201 BROWNTOWN ROAD		NEW KENSINGTON	ALLEGHENY	PA	15068
PSSI Global Services LLC	E880053	SESRWL2007092701331	current		RWL		FES	1	S-9.2	1	201 BROWNTOWN ROAD		NEW KENSINGTON	ALLEGHENY	PA	15068
PSSI Global Services LLC	E880053	SESRWL2007092701331	current		RWL		FES	1	V-4.5M	1	201 BROWNTOWN ROAD		NEW KENSINGTON	ALLEGHENY	PA	15068
CBS Communications Services Inc.	E130222	SESREG201310600943	current		REG		FES	1	1	1	CLEARVIEW ROAD	(KDKA-TV)- ALLISON PARK	PITTSBURGH	ALLEGHENY	PA	15101
CBS Communications Services Inc.	W261	SESMOD2018051800779	current		MOD		FES	1	1	3	CLEARVIEW RD. & KDKA DR.		ALLISON PARK	ALLEGHENY	PA	15101
CBS Communications Services Inc.	W261	SESMOD2018051800779	current		MOD		FES	1	2	1	CLEARVIEW RD. & KDKA DR.		ALLISON PARK	ALLEGHENY	PA	15101
CBS Communications Services Inc.	W261	SESMOD2018051800779	current		MOD		FES	1	3	2	CLEARVIEW RD. & KDKA DR.		ALLISON PARK	ALLEGHENY	PA	15101