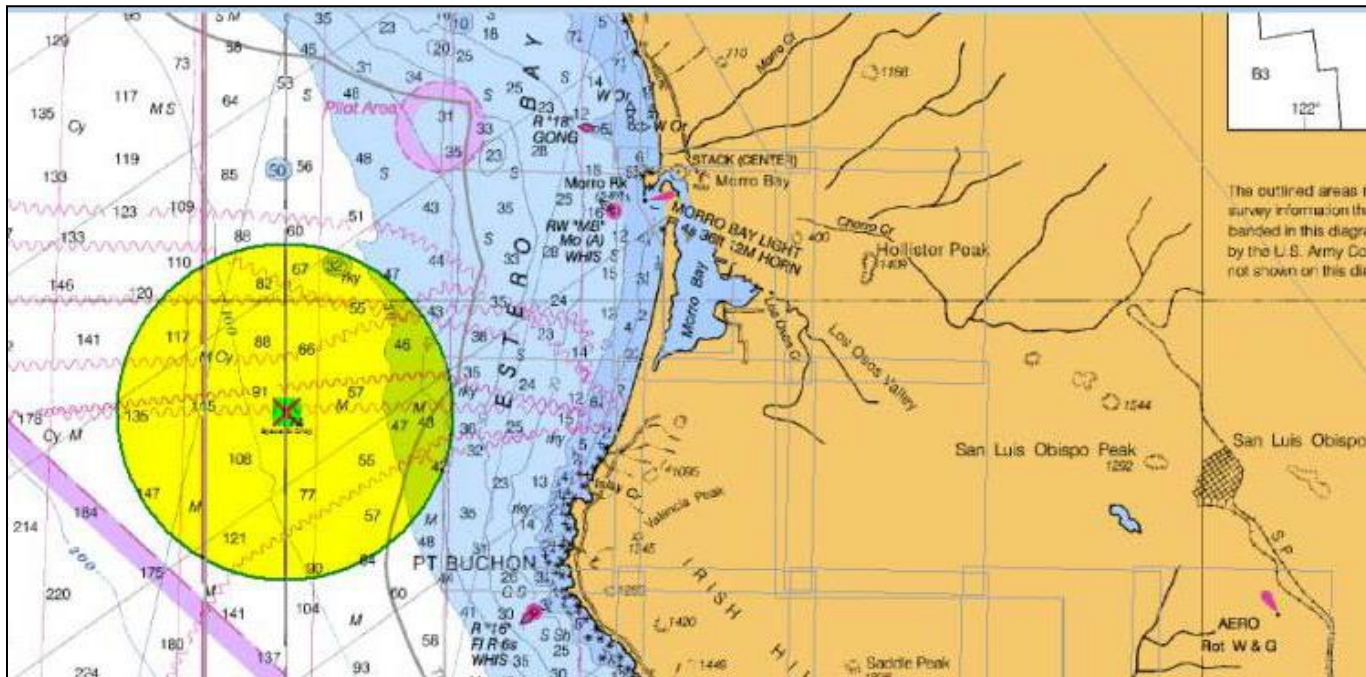
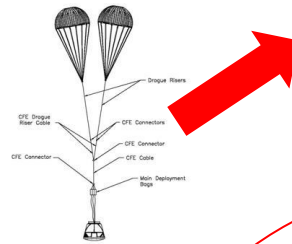
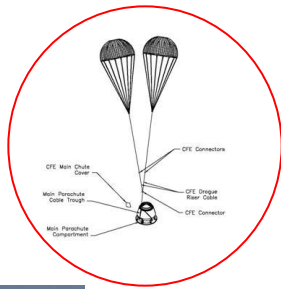
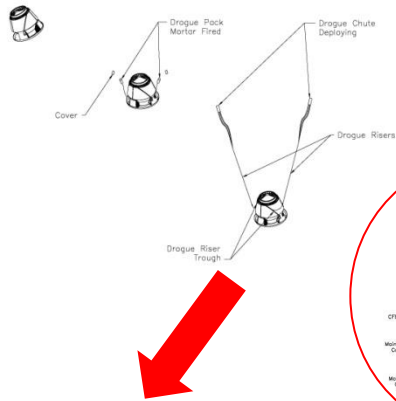


# Approach

- Drop Dragon test unit over Morro Bay, CA at 8,000 ft from a Sikorsky S-64F Sky Crane helicopter, using a 200-ft tow line and electrical release hook.
- Initiate parachute deployment on a time based sequence.
- Drop Point: (35° 18' N, 121° W)
- Tow Dragon back to a commercial dock for recovery lift via crane



# Summary of System/Testing

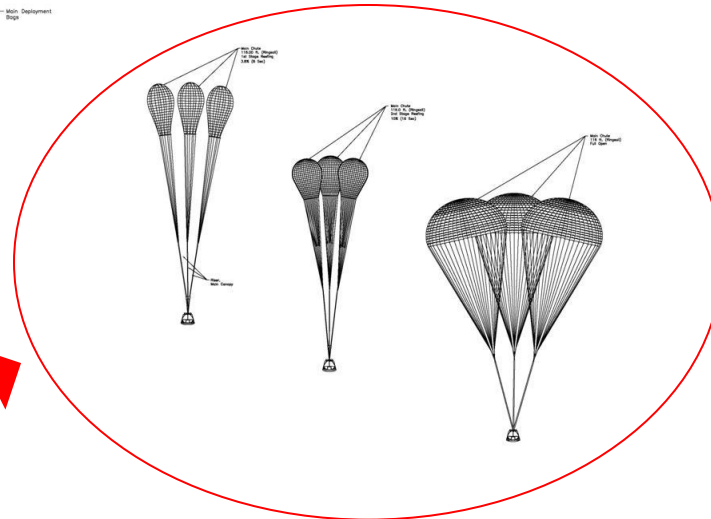


Main Parachute  
Deployment Test  
[SDT-00008567]



Drogue Mortar  
Test  
[SDT-00008113]

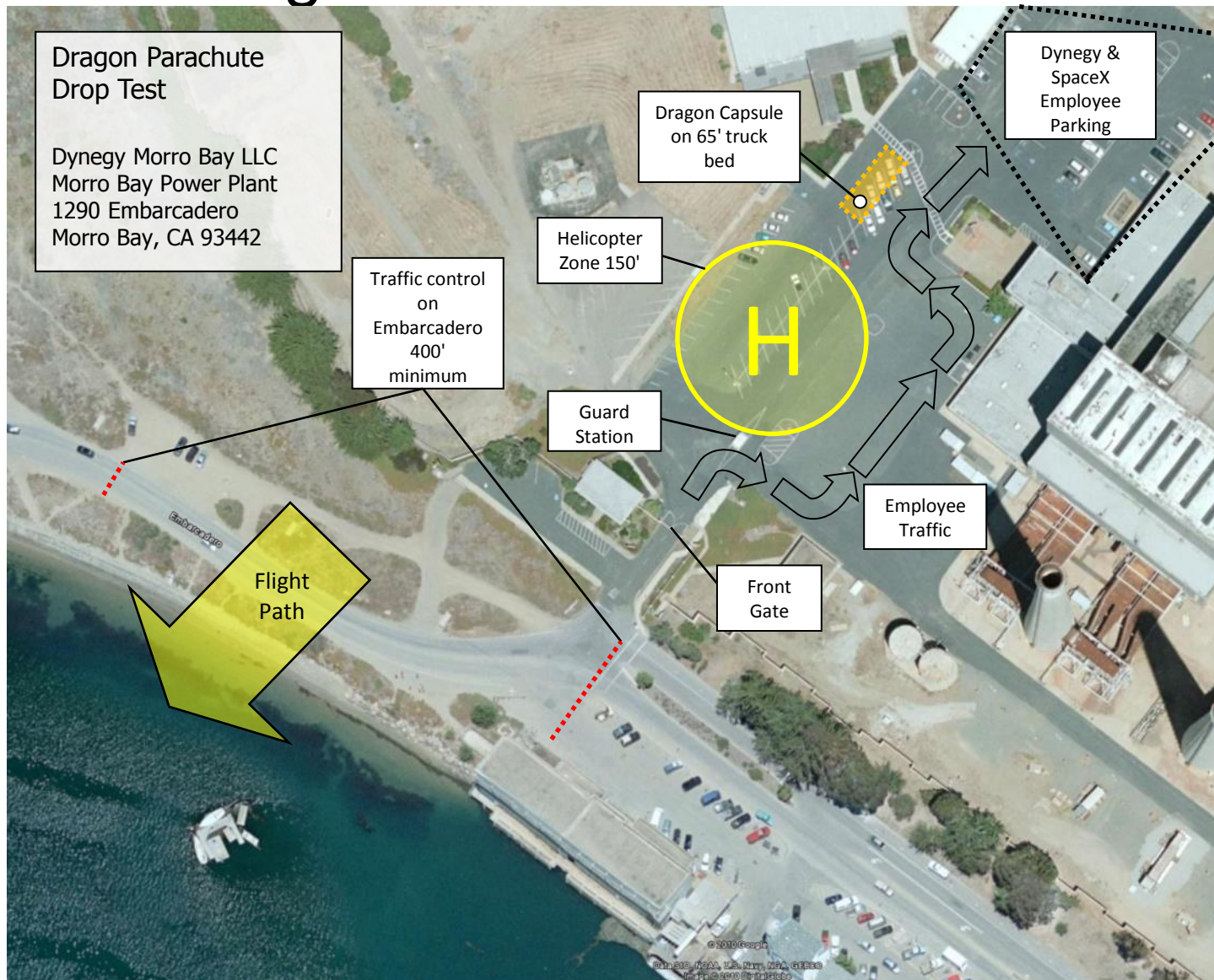
Drop  
Test



# Drop Test Profile

- Initial 60 sec most critical
  - 4 sec of freefall, fire drogues
  - 18 sec, 1<sup>st</sup> reefing line on drogues cut
  - 30 sec, release drogues to deploy mains
  - 40 sec, 1<sup>st</sup> reefing line on mains cut
  - 48 sec, 2<sup>nd</sup> reefing line on mains cut
  - 55-60 sec, mains full open and at steady state velocity
- ~430 sec to ground after release (7 min)
  - ~17.1 ft/sec once under 3 fully inflated mains

# Lift Site Diagram



# Recovery Dock Diagram

