

Tree Area - Approx
30 m max tree
height, mixed pine
& deciduous located
approximately as
shown in Bird's Eye
View figure

Multiple Trees

MFHR RADAR

15 m Max

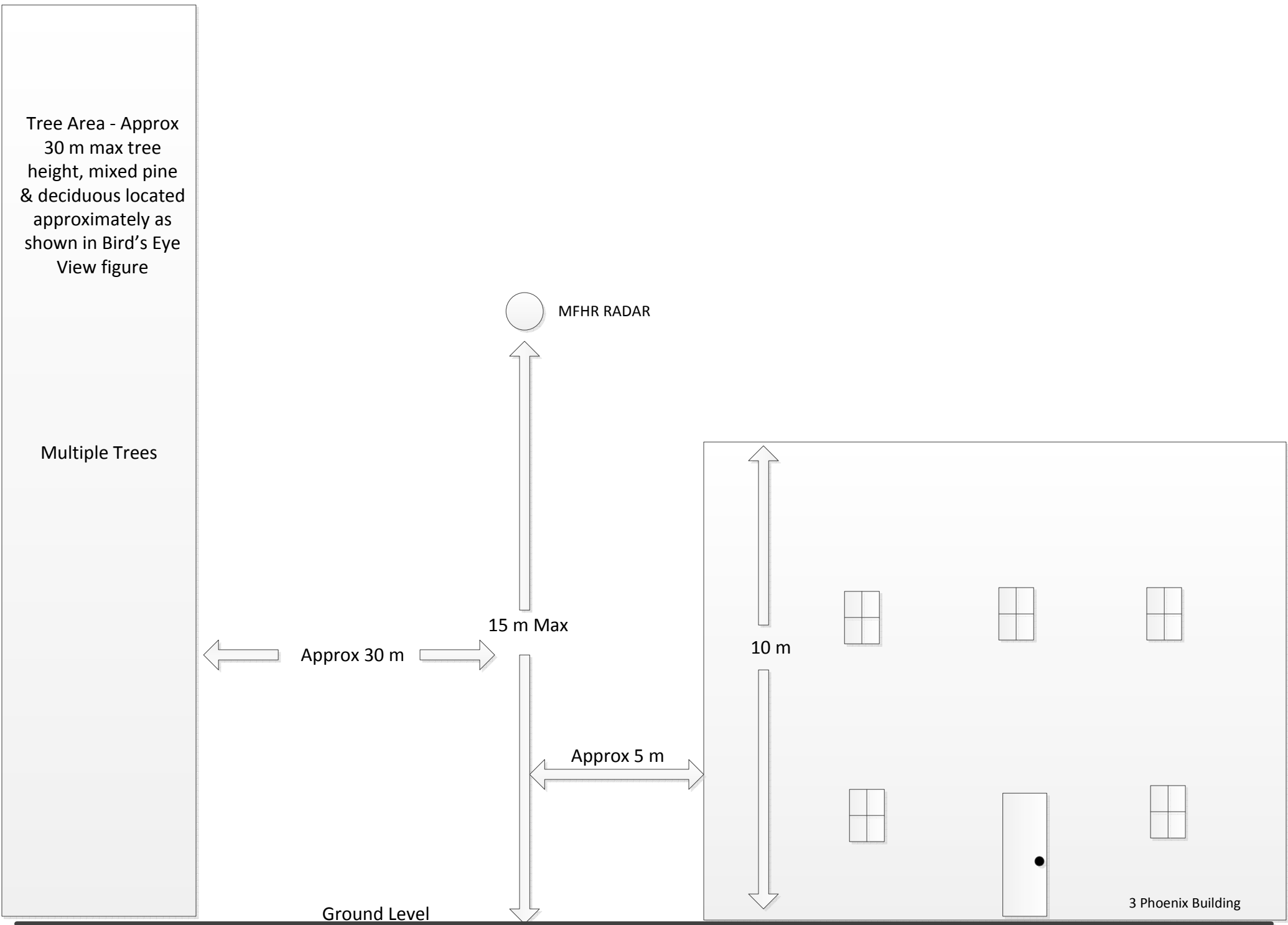
Approx 30 m

10 m

Approx 5 m

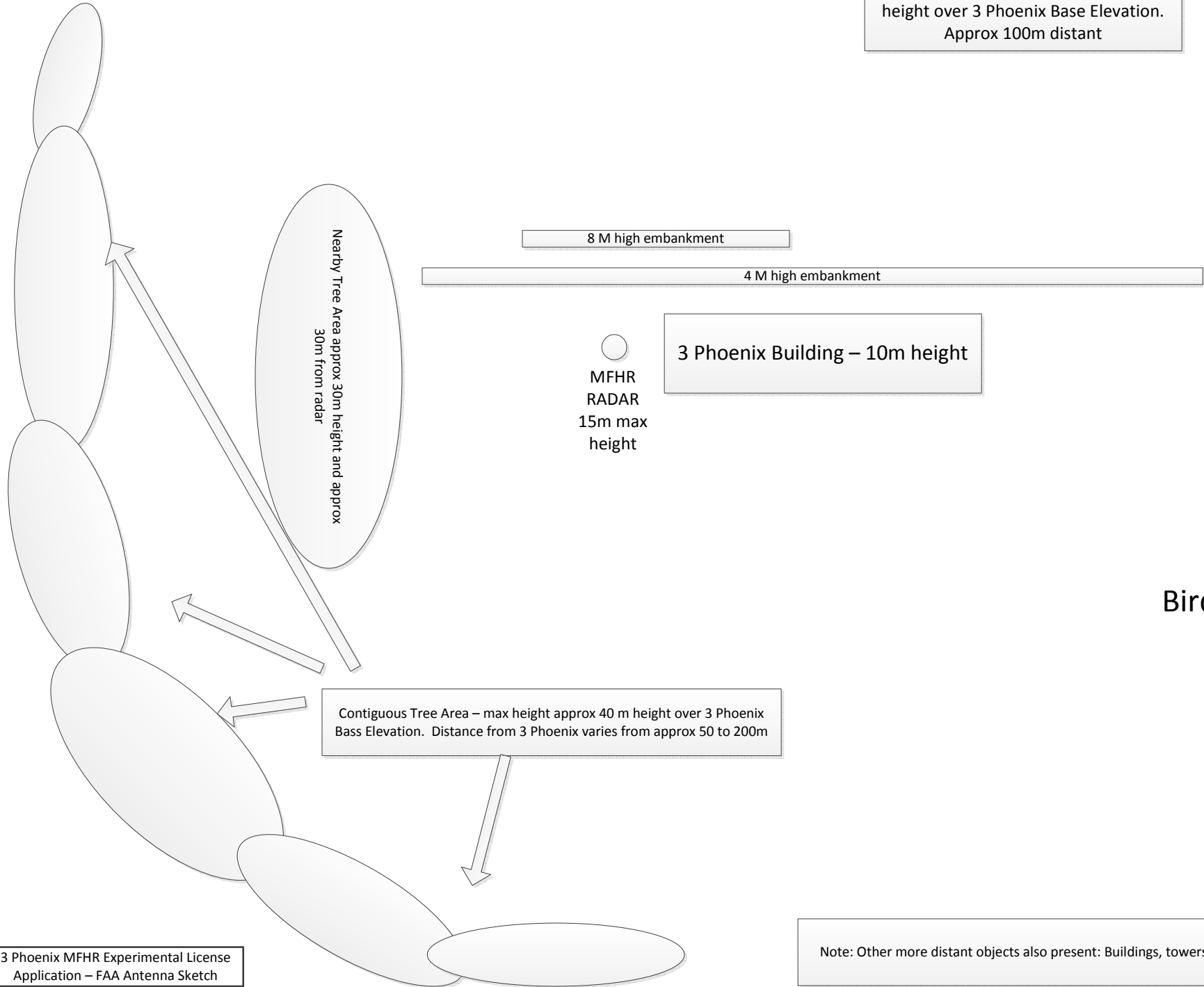
Ground Level

3 Phoenix Building



Tree Area – max height approx 40 m height over 3 Phoenix Bass Elevation. Approx 150M distant

Professional Building approx 20m height over 3 Phoenix Base Elevation. Approx 100m distant



Bird's Eye View

3 Phoenix MFHR Experimental License Application – FAA Antenna Sketch

Note: Other more distant objects also present: Buildings, towers, tanks, trees