

The Boeing Company**Request for Experimental License Exhibit**

Global Positioning System (GPS) Simulator

Contracted Research, Development, Test, and Evaluation (RDT&E) for U.S. Navy

Updated and Submitted 6/24/2011

by

Joel D. Thorsheim

The Boeing Company

Frequency Management Services M/C 2T-22

P.O. Box 3707

Seattle, WA 98128-2207

206-544-6066 (office)

866-248-1493 (toll free)

Request for Experimental License

See Confidential Items Document

Sensitive Information

See Confidentiality Statement Document

Building 598 Location

The Boeing Company
Bldg 73-598
2600 N 3rd Street
St Charles (ST Charles County), MO 63301-0060
38° 48' 48"N
090° 28' 21"W
WGS84/NAD83

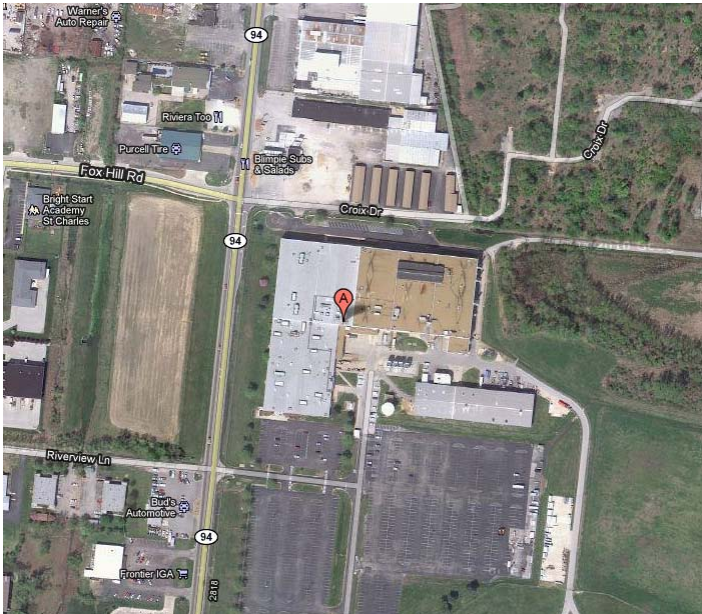


Figure 1 – Boeing, St Charles, MO (Building 73-598)

Frequencies, Power and Emission for Building 598

Frequency	Maximum ERP	Emission
1575.42 MHz (L1 GPS)	-68 dBm	24M00G1D
1227.6 MHz (L2 GPS)	-68 dBm	24M00G1D

Building 599 Location

The Boeing Company

Bldg 73-599

2600 N 3rd Street

St Charles (ST Charles County), MO 63301-0060

38° 48' 34"N

90° 28' 13"W

WGS84/NAD83



Figure 2 – Boeing, St Charles, MO (Building 73-599)

Frequencies, Power and Emission for Building 599

Frequency	Maximum ERP	Emission
1575.42 MHz (L1 GPS)	-76 dBm	24M00G1D
1227.6 MHz (L2 GPS)	-79 dBm	24M00G1D

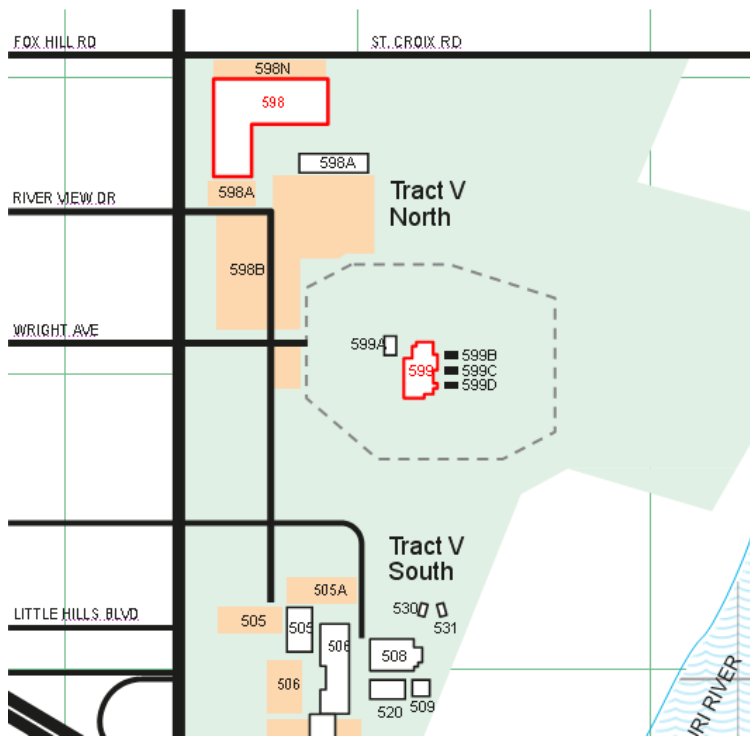


Figure 3 – Boeing, St Charles, MO
(Tract V Composite Picture – Bldgs 73-598 and 73-599 highlighted in red)

Schedule

The requested STA is to be effective for 2-years upon a grant from the FCC/OET. Operations will be anytime, 24 hours a day, 7 days a week, as necessary.

Stop Buzzer Contact Information

The equipment will be operated by Boeing employees.

James R. Johnson
 Manager, Prod Test Engr
 Email: james.r.johnson5@boeing.com
 Office: 314-232-5448

Darwin Estep
 Engineer
 Email: darwin.l.estep@boeing.com
 Office: 314-232-5463